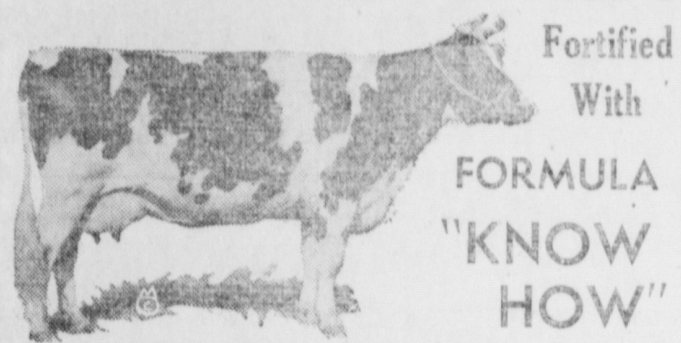


### Get The Latest Nutritional Developments in "RED TOP" DAIRY FEEDS



Fortified With  
**FORMULA "KNOW HOW"**

To Give You Healthier Cows  
...Greater Milk Production

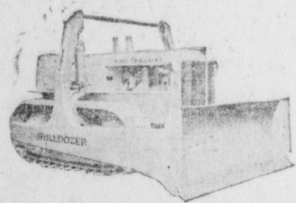
When you feed "RED TOP" Dairy Feeds you can be certain your herd will give maximum milk production. The health of your cows will be maintained. We are sure of this because "RED TOP" Dairy Feeds are made of the finest ingredients... according to formulas supplied us by one of the oldest feed companies in the United States. Their "FORMULA KNOW HOW" goes into every bag of RED TOP.

Reasonable PRICES - EXCELLENT RESULTS  
Splendid SERVICE.

For Full Milk Cans and Healthier Cows, Feed "RED TOP"

**RED TOP GRAIN & FEED CO.**  
MOUNT JOY, PENNA.

Everybody In This Locality Reads The Bulletin



## C. Robert Fry

MANHEIM R. D. 2, PA.

**Air Compressor Work**  
Rock Drilling, Concrete Breaking, Etc.

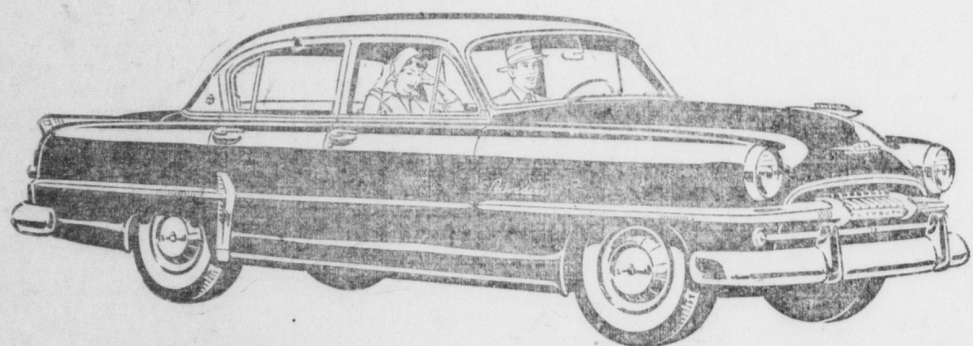
**Excavating and Grading**  
Cellars, Trenches, Etc.

**Rocks and Trees Removed**

PHONE MOUNT JOY 3-4753

## ON DISPLAY TODAY!

(and you can win one free!)



## the new '54 PLYMOUTH

We're having a big beauty and style show, and you're invited! We want you to be one of the very first to see the sparkling new 1954 PLYMOUTH!

When you do, you'll see a bigger looking, longer car, with brand-new colors... the fresh new beauty of "Color-Tuned" Styling... luxurious all-new interiors!

That's not all! The 1954 Plymouth has new full-time POWER STEERING—lets you drive without effort! Makes parking a real pleasure! And HY-DRIVE NO-SHIFT DRIVING! The newest, smoothest, least expensive no-shift driving in the low-price field!

There's more new value than we can talk about here—we urgently invite you to visit our showroom and let us show you the new 1954 Plymouth NOW!

Power Steering and Hy-Drive each available at low extra cost.

You can win one of these brilliant new Plymouths  
**FREE!**

Enter the big \$25,000 "WIN A NEW PLYMOUTH" CONTEST! Win a sparkling new 1954 Plymouth, or one of hundreds of big cash prizes, FREE! We've got entry blanks and all details. Hurry—contest closes midnight, Monday, October 19th.



Chrysler Corporation's No. 1 Car

**ELI AMENT GARAGE**  
MOUNT JOY, PENNA.

### M. J. H. S. Team Maintains Second Place In League

Mount Joy High School is keeping pace in the soccer section No. 1 battle with its second place position. Manor High School is the only undefeated team in the county.

In the Tuesday night's game, Mount Joy defeated Hempfield 4-0.

Mt. Joy	Pos.	Hempfield
Metzler	G	Wigham
Hallgren	RF	Baker
Miliken	IF	Shenk
Weber	RH	R. Starr
Klugh	CH	Risser
P. Nissley	IH	Martin
Schofield	OR	Beyer
Beaston	IR	Mumma
Nauman	CF	Emich
Zeller	IL	Bowers
Ashenfelter	OL	B. Starr
MOUNT JOY	2	1
HEMPFIELD	0	0

Scoring: Mt. Joy - Nauman 2, Zeller, Ashenfelter.

Substitutions: Mt. Joy - J. Thome, Snaveley, Mayer, Fish, Pennell B. Thome, C. Groff, Krall, Eby, Weidman, Newcomer, B. Zeller, D. Nissley, Harple E. Groff, Hempfield - Smith, Sohl, Mowrer, Ziegler.

Officials: Hurst, Snaveley.

**JOYCEES TO MEET IN LOCAL FIREHOUSE**  
The regular monthly meeting of the Mount Joy JoyCees will be held Tuesday evening, Oct. 20 in the firehouse. Final plans for the "Window Painting" project will be discussed.

### BOWLING NEWS

The Town "C" Bowling League is still retaining a race for first place with the Grocers leading and the Boxmen, Beer Barrels and Builders giving them a chase.

W. Zimmerman hit a single of 218 to also make the high single race tighter.

Thomas Mariner was forced to drop from the league play due to business and R. Kepple was forced to drop from the league because of night school. They will be replaced by J. Gainer and M. Pricio.

Team	W	L
Grocers	20½	11½
Boxmen	19½	12½
Beer Barrels	18	14
Builders	18	14
Contractors	17	15
Jewelers	15	17
T. Rutt's	13	19
Merchants	7	25

High Single: J. Heilig, 220; R. Hurst, 219; Zimmerman 218.

High Triple: J. Meckley, 600; G. Hardish, 561; P. Neiss, 558.

High Team Single: Beer Barrels, 867; Boxmen, 840; Grocers, 808.

High Team Triple: Contractors, 2417; Boxmen 2399; Beer Barrels, 2391.

### Ben Groff Jr. Honored At Co. Midget Banquet

Benjamin Groff, Jr., received a trophy as the most valuable player on the Mount Joy Midget baseball team at a banquet held at the Legion home for all the Lancaster County teams. This was the sixth year for a banquet of this type to be held. One hundred and thirty people attended from Mount Joy, Millersville, Bainbridge, Paradise, Columbia, Manheim, Grandview Heights, Elizabethtown, Landisville, and Marietta.

### Mrs. Frank Young Assumes Leadership Of Troop 212

Mrs. Frank Young, Jr., has taken over the leadership of Troop 212, Intermediate Girl Scouts in Mount Joy. She will be assisted by Mrs. William Gassman.

Next week's meeting will feature the Brownie "Fly-Up" ceremony at which time the troop will become Intermediate. The troop is sponsored by the American Legion Auxiliary Post 185 and the troop committee is Mrs. Howard Brown, Mrs. Robert Brown, Mrs. George Brown III, Mrs. Clyde Brill and Mrs. Robert Walker. The troop leader is replacing Mrs. James Phillips.

Everybody reads newspapers but NOT everybody reads circular advertising left on their door step.

### Weekly Letter Penna. Game Commission

On October 1, S. S. Lewis, Secretary, Department of Forests and Waters with the approval of Governor Fine, announced the opening of 29,123 acres of non-recreational portions of the following State Parks for the 1953 hunting season for archers and gun hunters subject to the Acts of Assembly governing hunting.

The number of acres made available for archers and hunters in the several parks is as follows: French Creek, Berks County, 2000 acres out of 5,300 acres; Hickory Run, Carbon County, 6500 of 15,000 acres; Ricketts Glen, Luzerne County, 6700 of 14,000; Cook Forest, Clarion County, 3400 of 6,000; Raccoon Creek, Beaver County, 2123 of 6,400; Blue Knob, Bedford County, 2500 of 6,000; Laurel Hill, Somerset County, 900 of 4,500; Tobyhanna, Monroe County, 5000 of 7000 acres.

The different areas will be posted with signs which will clearly indicate where hunting is permissible, and individual park maps showing permissible hunting areas, may be secured at the park offices.

### Pointers on Bow Hunting For Deer

In reply to questions often asked, the Game Commission advises it is unlawful to:

1. Hunt with bow and arrow for deer before 7 a. m. or after 5 p. m., Eastern Standard Time, on any day of the special archery season.
2. Use a cross bow.
3. Use an arrow with an explosive tip or shaft.
4. Carry a firearm of any kind—even a registered side-arm—while hunting deer in the special archery season, Oct. 12-25.

No maximum or minimum pulling weight has been set for bows.

Barbed or barless broad-head arrows, of any dimension, are legal.

The Game Commission urges successful archers to fulfill a legal requirement and report their deer kill on the card provided with their hunting license.

**Deer Killed in Protection to Property**  
In the Game Commission's fiscal year, ending May 31, 1942 deer were reported killed in Pennsylvania in protection to property. Destruction of farm crops was the principal reason for the defensive acts.

Of the 10 highest counties Potter led with 200 deer so killed, Tioga County\* was next with 152, Sullivan had 153;

### Oyster-Ham Loaf Supper To Be Served Nov. 7

An oyster and ham loaf supper will be served in the Landisville Fire Hall, Landisville Saturday, November 7, 1953 by the Ladies and Men's Bible Classes of the Church of God, Landisville.

The supper will be served from 4:30 to 8 p. m.

The Game Law provides that persons actually residing upon and cultivating lands used for general farm crop purposes, commercial truck gardening, fruit orchards or nursery being regularly maintained for commercial purposes, may shoot these animals immediately following destruction of the type described. When a deer is so destroyed the person who did the killing is required to remove the animal's entrails and transfer the carcass to a place of safekeeping. The law reads that a game protector or the Harris-Ricketts Glen, Luzerne County, burg office of the Game Commission shall be supplied with a complete report of the incident within 12 hours after the killing, following which disposition of the carcass shall be made.

### Early Bird Season Ends

The Game Commission reminds hunters: the dove season ends October 14 and the season or Wilson's or jacksnipe closes October 16.

### Seven Deer Hunters Run Afoul of Law

A Carbon County game protector, William E. Fulmer of Leighton was a busy officer on a week-end late in September. On the 18th, with the aid of deputies and a fish warden, he finally caught up with 5 young fellows who had attempted to kill a deer in eastern Carbon County on August 10th. Those lads got "pocketbook education" to the tune of \$100 apiece.

At 4 a. m. on Sunday, September 20th, Fulmer pursued two men in his auto at 90 miles an hour for 3 miles before apprehending them. They were charged with jackinglighting deer and refusing to accompany an officer. In their frenzy to escape, the violators threw their guns and ammunition out of their car. One of the men was a second offender. A justice of the Peace fined each of these Game Law \$200.

Everybody reads newspapers but NOT everybody reads circular advertising left on their door step.

### Special Saturday Chicken In The Basket \$1.25

**Dronery's Cafe**  
30 Jacob Street  
MOUNT JOY

Beer Wine Liqueur

## Mount Joy Legion

SATURDAY, OCTOBER 17th  
**Low Stewbins**

SUNDAY, OCTOBER 18th  
**Tiny Wright Trio**

Sunday family dinners will be served starting at 1:00 until 7 — Steaks, Chops, Sea Foods, Beef, Pork and Turkey.

**JOY THEATRE**  
Mount Joy, Pa.

FRIDAY — SATURDAY, OCTOBER 16 - 17  
GARY COOPER — BARRY JONES -in-  
**"Return To Paradise"**

MONDAY — TUESDAY, OCTOBER 19 - 20  
JOHN PAYNE — DONNA REED -in-  
**"Raiders Of The Seven Seas"**

WEDNESDAY — THURSDAY, OCTOBER 21 - 22  
GLENN FORD — DIANA LYNN -in-  
**"Plunder Of The Sun"**

COMING:  
OCTOBER 30 - 31 — "SO THIS IS LOVE"  
NOVEMBER 20 - 21 — "ISLAND IN THE SKY"  
NOVEMBER 25 - 26 — "MR. SCOUTMASTER"

## Welcome To The Farm Show

**FREE — 5 lbs. Sugar — FREE**  
With Every \$10 or More In Purchases

### SWIFT PREMIUM HAMS

Center Slices lb \$1.25 Whole or Shank Half lb 59c  
Planters Salted Peanuts large can 29c

### HEINZ SPECIALS

KOSHER PICKLES HOT DOG RELISH  
PICKLE STICKS CHILI SAUCE  
MUSTARD KETCHUP

**Fresh Produce and Fruits — Always**  
Choice, Crisp, Cool and Fresh

Norris Fancy Pineapple Preserves jar 19c  
Norris Fancy Whole Kernel White Corn 303 can 22c  
Del Monte Fruit Cocktail 2½ can 35c

### FRESH OYSTERS

## HESS' FOOD STORE

— THE HOME OF GOOD FOODS —  
PHONE 3-9094 MOUNT JOY, PA.

## KELLY GRIP TRAC FOR WORRY-FREE WINTER DRIVING



- HUSKY CROSS LUGS FOR SURE TRACTION IN SOFT GOING
- STURDY OVERLAPPING TRACTION BLOCKS ROLL SMOOTHLY ON PAVEMENT
- SELF-CLEANING CLEATS—SNOW AND MUD CAN'T PACK!
- ARMORRUBBER SO TOUGH IT OUTWEARS STEEL

### Positive Grip in Mud, Snow

Ask about our easy pay as you ride plan...

TERMS LOW AS \$1.25 WEEK!

## GEO. W. LEAMAN

208 E. MAIN ST., MOUNT JOY PHONE 3-9351

TIRE SERVICE HEADQUARTERS