

**THE BULLETIN**  
Published every Thursday at 11 East Main Street, Mount Joy, Lancaster County, Pa.  
Larmon D. Smith, Publisher  
John E. Schroll, Editor and Publisher, 1901-1952  
Subscription Rate \$2.50 per Year by Mail  
Advertising rates upon request. Entered at the postoffice at Mount Joy, Pa., as second-class mail under the Act of March 3, 1879.  
Member, Pennsylvania Newspaper Publishers' Association.

**OWL LAFFS**



BY A WISE OWL

Next week's the farm show and we'll be looking for all our rural friends and nearby hamlet folks to pay us a visit same as other years. Don't forget!

Down at Wilmington on Saturday one of our stoooges was waiting for the "down" elevator in a large building. A female elevator operator was in the "up" car alone with a Marine and at my floor she called out: "Going up—going up—anybody else going up? Please, will somebody else go up?"

Heard a little political argument at the Fire House the other night that went like this: "Why, I wouldn't vote for you if you were St. Peter himself."

Second fellow: "If I were St. Peter, you wouldn't vote for me. You wouldn't be in my district."

One of the boys in the high school band that plays the trombone absolutely refuses to do any more practicing at home. He says whenever he does his big sister hangs her nylons on his horn to dry them. She says if he'd just practice instead of complaining, they'd be dry before he know it.

Jerry Pennell asked Frances Siller which teams were playing in the World Series. She vowed she wouldn't be as dumb as last year when she named the wrong ones.

The average man's life is now divided between worry over 2 tubes, television and inner.

Television is a wonderful thing though, but it will never replace the old fashioned key hole.

Willie says: One small jack can lift a car, but it takes a lot of jack to keep it up.

A Mannheim sailor's enlistment in the navy expired. A friend gob asked him what he thought of the sea.

"Just this much," he said. "I am going to put an ear over my shoulder and start walking inland—and I'm going to keep on walking and walking and walking until some one stops me and asks, 'What's that thing you've got over your shoulder?' Then I'm going to settle right down there until I die."

Back in the days when horses were common in the service, two calvary rookies were each given a horse, and they wondered how to tell them apart. Joe cut the mane off his horse, but in a short time it grew out again. Then Bill trimmed the tail of his horse, but it grew back. Finally Joe got an idea. "Why don't we measure them?" he asked. Maybe one horse is larger than the other.

So they measured them and sure enough, the black horse was three inches taller than the white one.

Here's some snappy signs we saw around the Country—  
Song on a Diaper Laundry Truck: "Rock a Dry Baby."  
Sign on a quaint little road in Vermont: "Harken! No parkin', larkin' or sparkin, and no foolin'!"  
Sign in a window of a fire

**Statement Printed to Comply With Recently Enacted Law Of Congress**  
Statement of the ownership, management, etc., of the Mt. Joy Bulletin, published weekly at Mt. Joy, Pa., for October 1, 1953.  
Larmon D. Smith, publisher.

Known bondholders, mortgages and other security holders, holding 1 per cent, or more of total amount of bonds, mortgages or other securities—None.

That the average number of copies of each issue of this publication sold or distributed through the mails or otherwise, to paid subscribers during the twelve months preceding the date shown above is 2,250.

Larmon D. Smith, owner  
Sworn to and subscribed before me this 29 day of September, 1953.  
William F. Brian,  
Notary Public  
My commission expires January 6, 1957.

**ENGAGEMENTS**

**STORM — LORAW**

The engagement of Miss Rita Storm, daughter of Mr. and Mrs. John Storm, 1213 Manor street, Columbia, and Fred V. Loraw, son of Mr. and Mrs. D. Loraw, Florin, has been announced by her parents.

Miss Storm is employed in the office of the Marietta Transportation Corps and Mr. Loraw is in business with father, a painting contractor.

**NENTWIG — WISE**

Mr. and Mrs. Martin M. Nentwig, Mount Joy R1, announce the engagement of their daughter, Mary Ann, to William W. Wise, Hummelstown R2.

Miss Nentwig is employed by the Gerberich-Payne Shoe Co., Mount Joy. Mr. Wise is employed by Castle Brothers Plumbing and Heating Co., Palmyra.

No date has been set for the wedding.

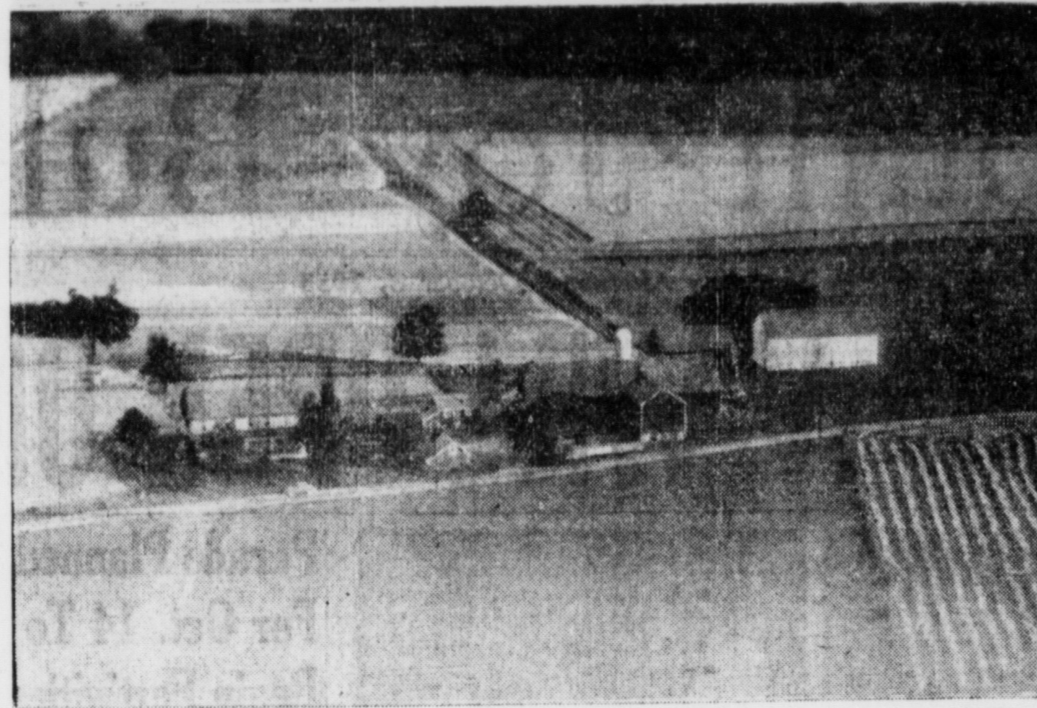
guted liquor store: "We are carrying on with unbroken spirits."

A man in a sailor suit was making himself most obnoxious while riding the bus up our way. He was sitting with a lady from uptown and in trying to make conversation he said: "I've been following the water for sixteen years." The lady looked him up and down "You look like you never caught up with it." — That cured him.

Back at work  
This mighty nation  
Saves now for  
Its next vacation.

A WISE OWL

Patronize Bulletin Advertisers.



**WINNING FARM**—The farm of E. W. Wissler, Mount Joy Route 2, was the winning farm in the Farm Photo Quiz last week. The farm is located on the road between Mount Joy and Salunga, near Eshleman's Quarry and contains 87 acres. Mr. and Mrs. Wissler have lived on the farm off almost 18 years. Mr. and Mrs. Gilbert Antes also reside on the farm.

**Marian S. Sangrey Becomes Bride of Donald S. Groff**

Miss Marian S. Sangrey, daughter of Mr. and Mrs. David M. Sangrey, Manheim R1, and Donald S. Groff, son of Mr. and Mrs. Ira C. Groff, Lancaster R6, were married at 10 a.m. on Thursday in the East Petersburg Mennonite Church. Bishop Henry Lutz officiated assisted by Rev. David Thomas.

Miss Luella Sangrey, Willow Street R1, cousin of the bride, was maid of honor and bridesmaids were Miss Lois Stauffer, Lancaster R3, another cousin; and Mrs. Omar Landis, Lititz R3.

Robert Groff, brother of the bridegroom, was best man. Ushers were Ira Groff, also a brother; Omar Landis, Lititz R3; Abram Charles, Lancaster R2; and Raymond Miller, Mount Joy R1. Mrs. Abram Charles, Lancaster R2, and Mrs. Raymond Miller, Mount Joy R1, sister of the bride, were gift receivers.

Music was furnished by a quartette composed of Dorothy Stehman, Mrs. Willard Delp, Jay Garber and Mahlon Shantz. A reception was held at Hostetter's Banquet Hall, Mount Joy. After a wedding trip through the west the couple will reside at Lancaster R6.

Patronize Bulletin Advertisers.

**Penn State Team Wins In Livestock Judging**

Penn State's livestock judging team, in its first intercollegiate competition of the new school year, all but forced seven opposing groups out of the running to win top honors at the Eastern States Exposition at Springfield, Mass., last month. Racking up a total of 4270 points to finish far ahead of last year's winner, Ohio State, the local group swept the field in

team competitions, ranking first in all four: beef cattle, horses, swine, and sheep.

The only woman on the Penn State team, Marion P. Cullen of Georgetown R3, ranked first in beef cattle judging and tied or first in the horse division, emerging as high scoring individual of the exposition. A third first-place win was earned for the team in the sheep judging contest by Robert D. Herr, Lancaster.

Patronize Bulletin Advertisers.

**OPEN EVENINGS During Farm Show**

As a convenience to the many folks who will be in Mount Joy during the Farm Show, Wednesday, October 14, through Saturday, October 17, our store will be open evenings until 9 P. M. Stop in and look around—See our large selection of tires and appliances at reasonable prices.

**GEO. W. LEAMAN**  
208 E. MAIN ST., MOUNT JOY PHONE 3-9351

A message to every prospective new car buyer:

You can have the most popular automatic transmission to be found in any low-priced car **Chevrolet's Famous 1953 Powerglide!\***

Much fleetier, smoother, more economical! Thoroughly proved and improved through years of development and over a billion owner-driven miles! Production now running at new high levels due to record nationwide demand!

**Much More Economical**  
Chevrolet's 1953 Powerglide Automatic Transmission—teamed with the 115-h.p. "Blue-Flame" high-compression Valve-in-Head engine—brings you entirely new operating economy in city driving and on long trips.

**Far Livelier Getaway**  
Put the selector lever in "DRIVE" position—step on the accelerator—and you move smoothly away from a standing start to legal traffic speed in seconds.

**Important New Gas Savings**  
You'll never know how economical an automatic transmission can be until you try the 1953 Powerglide. Various improvements, including a

more efficient use of engine power, make it extremely thrifty.

**Great New Passing Ability**  
The car picks up pace in traffic or on the highway at the touch of a toe, for the '53 Powerglide has an added automatic passing range.

**Smoothest No-Shift Driving at Lowest Cost**  
Driving is almost incredibly easy, changes of speed almost unbelievably smooth... for this transmission gives simplest, smoothest, no-shift driving at lowest cost.

**Safe Eyes-on-the-Road Driving**  
Powerglide permits you to concentrate on driving, with hands on the steering wheel and eyes on the road.

**Full Engine Braking-Power on Hills**  
Powerglide's flexibility lets you cruise easily up any hill. And you enjoy constant engine braking power for maximum safety when descending.

**Rock Out of Trouble**  
Powerglide's smooth power flow lets you rock out of sand, snow or mud whenever the need arises. "LOW" and "REVERSE" are side by side on the Powerglide quadrant, making the operation doubly easy.

**Push-Proof Parking**  
Put the selector lever in "PARK" position when you leave the car, and a positive gear-type lock holds it in position until you return.

**Time-Proved, Owner-Proved Dependability**  
Come in. Drive a Chevrolet with this finer, more popular automatic transmission—time-proved by hundreds of thousands of owners in over a billion miles of driving!

**MORE PEOPLE BUY CHEVROLETS THAN ANY OTHER CAR!**



\*Optional at extra cost. Combination of Powerglide automatic transmission and 115-h.p. "Blue-Flame" engine available on "Two-Ten" and "Bel Air" models. Power Steering available on all models.

**NEWCOMER MOTORS, Inc.**

**Mount Joy, Pa.**

**REMAINING SOCCER GAMES**  
Oct. 13, East Hempheld, away  
Oct. 15, Manor at home.  
Oct. 20, Marietta, away.  
Oct. 22, New Holland, away.  
Oct. 27, East Donegal at home

**ARE YOU IN THE DOG HOUSE?**  
HAND HER THE WALLET and The ADS In This Paper

Patronize Bulletin Advertisers.

**"STOF" DON LET POOR BUSINESS GET YOU DOWN**  
"ITS WONDERFUL" ADVERTISING

**FAIRVIEW MANOR NURSING HOME**  
Under Supervision of Registered Nurses, House Physician or Personal Physician retained.  
Nurse on duty 24 Hours daily  
Home Living Conditions  
Phone Columbia 4-7531  
Penn and Plane Streets 32-1f  
Patronize Bulletin Advertisers.

**Quality Meats**  
ALSO A FULL LINE OF **BIRDS EYE FROSTED FOODS**  
**Fruits & Vegetables**  
**KRALL'S Meat Market**  
WEST MAIN ST., MOUNT JOY

**JAMES B. HEILIG**  
Funeral Director  
MOUNT JOY, PENNA.

You're Invited To A&P's 94th Anniversary Celebration...  
**2nd Big Week! Extraordinary Values!** 1859 1953

**Oranges** California 252-Size ONE PRICE—NONE PRICED HIGHER 2 dozen 45¢  
**Broccoli** California Tender Green ONE PRICE—NONE PRICED HIGHER large bunch 19¢  
**Grapefruit** Florida Large 64-70 Size ONE PRICE—NONE PRICED HIGHER 3 for 19¢  
**Honeydews** California Jumbo Size (Sweetening Eating) ONE PRICE—NONE PRICED HIGHER each 35¢  
**Sweet Potatoes** Yellow U. S. No. 1 None Higher 3 lbs. 19¢  
**Bartlett Pears** Western—None Priced Higher 2 lbs. 25¢  
**Fancy Apples** Courtland None Priced Higher 3 lbs. 25¢  
**Onions** White or Spanish None Priced Higher 3 lbs. 19¢  
**Sunsweet Prunes** 1-lb. pkg. 25¢ 2-lb. pkg. 47¢  
**A&P Seedless Raisins** 15-oz. pkg. 17¢  
**Orange Juice** Old South Frozen 6 6-oz. cans 85¢  
**Lima Beans** Snow Crop 2 10-oz. pgs. 45¢  
**Birds Eye Cut Corn** 2 10-oz. pgs. 35¢  
**Sliced Peaches** Birds Eye or Snow Crop 2 12-oz. pgs. 45¢  
**Pastry Flour** Sunnyside Reduced Prices 2-lb. bag 35¢ 10-lb. bag 67¢  
**Family Flour** Sunnyside Reduced Prices 5-lb. bag 39¢ 10-lb. bag 75¢  
**Granulated Sugar** 5-lb. bag 50¢ 10-lb. bag 98¢  
**Nutley Oleomargarine** 2 1-lb. pgs. 39¢  
**Ched-O-Bit** American or Pimento Cheese Food 2-lb. loaf 79¢  
**Del Monte Peaches** New Pack Sliced or Halves 29-oz. can 29¢  
**Pineapple Juice** Del Monte 40-oz. can 29¢ 2 18-oz. cans 25¢  
**Del Monte Tomato Juice** 40-oz. can 29¢ 2 18-oz. cans 25¢  
**Del Monte Golden Corn** Cream Style 2 17-oz. cans 35¢  
**Iona Peaches** 1953 New Pack Sliced or Halves 2 29-oz. cans 49¢  
**A&P Sauerkraut** or Silver Floss 2 27-oz. cans 29¢  
**Armour Star Treet** 12-oz. can 49¢  
**Claridge Hamburgers** In Tomato Sauce or Brown Gravy 15-oz. can 45¢  
**Tomato Soup** Campbell's or Heinz 3 cans 32¢  
**Strawberry Preserves** Stafford Farms 12-oz. jar 25¢  
**Nestle's Morsels** Semi-Sweet Chocolate 2 6-oz. pgs. 39¢  
**Gelatin Desserts** or Puddings Ann Page Sparkle 3 pgs. 17¢  
**Libby's Whole Apricots** Unpeeled 17-oz. can 19¢  
**Chocolate Thin Mints** Warwick 1-lb. pkg. 39¢  
**Hershey Chocolate Syrup** 2 1-lb. cans 33¢  
**Kleenex Tissue** Pkg. of 200 13¢ Pkg. of 500 19¢  
**Jane Parker Spanish Bar** Special! each 29¢  
**Jane Parker Apple Pie** Special! 8-inch pie 39¢  
**White Bread** Jane Parker Sliced—Save up to 5¢ on the 1-pound loaf 1-lb. loaf 15¢

**Sweetheart Soap** 3 regular size cakes 22¢  
**All Sweet Oleomargarine** 1/2-lb. prints 2 1-lb. pgs. 55¢  
**Homestyle Red Cabbage** 16-oz. jar 18¢  
**Wilson's Mor** 12-oz. can 45¢  
**Chicken-o-the-Sea Tuna Fish** Green Label 6 1/2-oz. can 35¢ Red Label 7-oz. can 39¢ White Meat 7-oz. can 41¢  
**Ideal Dog Food** 6 1-lb. cans 85¢

All prices in this advertisement are effective through Saturday, October 10. Items subject to Penna. Tax are shown at retail price in this advertisement and do not include the tax.

**87 EAST MAIN ST. MT. JOY, PA.**