

AARON G. LONGENECKER

BUILDING CONTRACTOR

MOUNT JOY R. D. 2

PHONE 3-6100

Millwork — Fill — Grading
Lumber — Topsoil — Excavating
Kitchen Cabinets

33-tfc

How to borrow money

Ten helpful rules listing the right time, the right place, and the right way to borrow money.



do you know

when it is wise for you to borrow, and when it is not?

how much of a down payment to make when buying something on credit?

the value of having a good credit record?

how to figure the cost of borrowing money?

You'll find the answers to these and other important questions in "How To Borrow Money."

Here is a FREE booklet of interest and value to everyone, a booklet that will save you money... help you avoid embarrassment... and help you manage your income better.

Get your copy at no cost by writing, phoning, or calling at the bank in person.

The First National Bank & Trust Co.

OF MOUNT JOY

MOUNT JOY, PA.

Member Federal Deposit Insurance Corporation

Copr. 1953, Pennsylvania Bankers Association

JOHN BOOTH'S ENTERTAIN

Mr. and Mrs. John Booth of Delta street, entertained friends at a corn and doggie roast in their backyard Sunday night.

There were about 34 guests present. The get-together was in honor of the birthdays of Sara Habecker, Mr. and Mrs. James Roberts and daughter, Barbara, and Mrs. Norman Stauffer.

PIANO CLASSES

NOW STARTING

BEGINNING, INTERMEDIATE, ADVANCE PUPILS

Estelle B. Phillips

Pinkerton Road
PHONE 3-5425

Church Services To Be Broadcast

The morning worship service of the Washington Street Church of the Brethren, Elizabethtown, will be broadcast over Radio Station WLAN, Lancaster each Sunday in September, from 11 a. m. to 12. These broadcasts are planned as a public service to shut-ins, and others near to a radio on Sunday mornings.

The senior choir of the Church directed by Galen W. Herr, will sing at each service, and Pastor Nevin H. Zuck will preach on the following themes: Sept. 6, "The God of All Peace"; Sept. 13, "One Step Enough For Me"; Sept. 20, "Peace Is Our Business"; and Sept. 27, "Life Without Liquor."

When in need of Printing, (anything) kindly remember the Bulletin

Mortuary Record

MARTHA L. HEISEY

Martha Louise Heisey, five, daughter of Martin M. and Theresa Halbleib Heisey, Mount Joy R2, died at 10 p. m. Tuesday at her home after a month's illness. Besides her parents, she is survived by a sister, Patricia Ann Heisey, at home; and her parental grandfather, Amos H. Heisey, Florin.

Funeral services will be held Saturday at 9 a. m. in the St. Peter's Catholic Church, Elizabethtown. The Angels' Mass will be celebrated by the Rev. Cletus A. Hauck. Interment in the St. Peter's Catholic cemetery. Friends may call at the Funeral Home of James B. Hellig, Friday 7 to 9 p. m. Public rosary will be recited at 8 p. m.

JACOB S. HOLLINGER

Jacob S. Hollinger, 78, formerly of Manheim, died in the Ephrata Hospital at 8:30 a. m. Tuesday of a cerebral hemorrhage, after an illness of six days. He was born in Rapho Twp., a son of the late Jacob R. and Susan Shearer Hollinger, and was a retired farmer and a member of the Church of the Brethren. His late wife was Alice Gibble before marriage.

These children survive: Phares, Litzitz; Mrs. Reuben Hummer, Ephrata; Mrs. Paul Graybill, Litzitz R2; and Clyde, Manheim; also 12 grandchildren, 7 great grandchildren; and these brothers and sisters: Mrs. Joseph Hostetter, Mt. Joy; Mrs. Katie Ruhl, Manheim; Allen, of Florin; Elias, Middletown R.D.; and Clayton, Hershey R2.

Funeral services will be held Friday afternoon at 1:45 p. m. from the Beck Funeral Home, Manheim. Further services at 2 p. m. in the Manheim Church of the Brethren. Interment in the Chiques Cemetery. Friends may call at the Beck Funeral Home Thursday evening, 7 to 9 p. m.

Everybody reads newspapers but NOT everybody reads circular advertising left on their door step.

P. P. & L. Shows Greater Earnings For Past Year

Pennsylvania Power & Light Company's consolidated pro-forma statement reflecting the recent acquisition of The Scranton Electric Company, shows revenue of \$103,638,824 for the 12 months ended July 31, a gain of \$5,920,417 or 6.1 above those of the corresponding period a year ago. Pro-forma consolidated earnings, after all charges, accruing to the common stock for the latest 12 months' period were \$12,976,809 equivalent to \$2.63 per share outstanding at such date as compared with \$11,823,211 or \$2.40 per share on the same basis for the 12 months' period ended July 31, 1952.

In reporting these noteworthy gains, Chas. E. Oakes, president, pointed to several developments which are expected to contribute to further substantial improvement in common stock earnings.

Since 1939, the company has been amortizing debt discount and expense applicable to bonds retired in 1939 and prior years by charges to income of about \$899,000 annually. The entire balance of \$5.4 million not yet amortized was charged off in June against earned surplus. While action will have the immediate effect of cutting back slightly the Company's common stock and surplus ratio future common stock earnings will benefit by the elimination of this annual charge by approximately 18c per share annually.

Mr. Oakes also pointed out that the reported earnings for the past 12 months include a number of non-recurring items of expense which will not be present in the future and that these amount to around 17c per share of common stock.

Mr. Oakes also called attention to the recent completion of another major step in the utility's \$313 million postwar expansion program to take care of continually-increasing demands for electric power. On Aug. 12, steam was admitted for the first time to the company's 125,000-kilowatt generator, the newest and largest in PP&L's system and the fourth unit to go on the line at PP&L's Sunbury plant. He pointed out that this new generator will be the most efficient on the Company's system and, that, in addition to providing increased capacity its operation should contribute substantial savings in production costs with consequent favorable effect on future Company earnings. Oakes explained further that the additional power made available through this new unit would replace present higher cost generation as well as substantial amounts of electric power heretofore obtained by interchange and purchase from neighboring utilities.

The utility head further stated that construction would soon be completed on the Scranton Electric Company's new addition to the Stanton power plant. Scheduled to go on the line shortly, this new 40,000-kilowatt unit will constitute a significant addition to power resources on the Scranton Company's system. Not only will such new capacity add materially to the power supply for customers in Scranton's service area, Oakes said, but the higher efficiency of the new unit should enable that utility to replace some power now obtained from other sources.

In conclusion, Mr. Oakes stated that, as a result of the sound growth taking place in its revenues, coupled with favorable developments in expenses and other charges, the Company looks forward to progressive improvement in its earnings for some time to come.

Everybody in this locality reads The Bulletin—that's why its advertisers get such excellent results.

In Case of Fire
In Mount Joy
and Vicinity

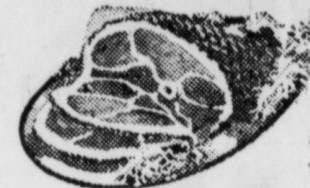
Dial 3-3431

Acme Markets

WILL BE CLOSED NEXT MONDAY
LABOR DAY HOLIDAY

Small, Smoked, Skinned

HAMS
Shank End
Some Slices
Removed
59¢ lb



Fancy, Small Hen
Dressed and Drawn - Ready for the Oven
TURKEYS 59¢ lb

Freshly Killed Fry or Stewing
Chickens 53¢ lb
Fully Dressed, Ready for the Pan

Freshly
GROUND BEEF 39¢ lb
STEER BEEF LIVER 39¢ lb
SLICED LEBANON BOLOGNA 1/2 lb 29¢

FANCY LARGE SHRIMP 63¢ lb
Perch or Haddock Fillets 1 lb 39¢
Cleaned Whittings 1 lb 15¢

TASTY
Skinless
FRANKS 45¢ lb
Ideal Mustard 8 1/2-oz Jar 11¢



Supreme Round
Bar-B-Que or
Long Frankfurt
ROLLS
Extra Special!
2 pkgs. 35¢

Glendale Club Wisc.
Loaf Cheese 2 lb 85¢
Get the Combination - 2 lb box Glendale Cheese and Aluminum Cheese Slicer - BOTH FOR \$1.09

Ideal Pork and
BEANS 25¢ 16-oz cans
Milrose Stuffed Spanish
OLIVES 31¢ 4 1/2-oz pail

IDEAL CREAMY
Peanut Butter 2 12-oz Jars 65¢
BONED CHICKEN Banquet: 5 1/2-oz can 39¢
GREEN BEANS Farmdale Cut 2 15 1/2-oz cans 29¢

NEW LOW PRICE!
Ideal Instant Coffee 4-oz Jar 97¢
You'll instantly admit its fine flavor, rich aroma, high 2-oz jar quality and low price recommend a trial.
IDEAL COFFEE Drip or Reg. Grind 1 lb vac can 89¢

Another Winner of a New 1953 Mercury Car!
Mr. John M. Hume, 4617 Chester Ave., Philadelphia 43, Pa.
Get Your Free 8th Week Card Today!
In the \$111,000 BASEBALL SWEEPSTAKES
Nothing to Buy - It's Free - Not a Contest

Be Sure to Get Enough Bread
for the Week-End and Holiday

Save 3c or 4c - Get ENRICHED SUPREME

BREAD 15¢



LOUELLA BUTTER BREAD White or Whole Wheat, loaf 25¢
CHOCOLATE ICED GOLDEN LAYER CAKES ea 69¢
GOLDEN COCOANUT BAR CAKES ea 39¢

Fresh Fruit and Vegetables for the Labor Day Holiday

CALIF. SEEDLESS
GRAPES 2 lbs 25¢

HONEYDEWS Large Jumbo Vine-Ripened ea 45¢

WASHINGTON STATE
FRESH PRUNES 2 lbs 25¢

FRESH MARYLAND
Cauliflower 25¢

SUGAR CORN Stowell's Evergreen 6 ears 19¢
CRISP PASCAL CELERY stalk 10¢

Large Eggplants ea 10¢ Large Green Peppers 3 for 10¢

Sweet Potatoes U. S. 1 Golden 3 lbs 19¢

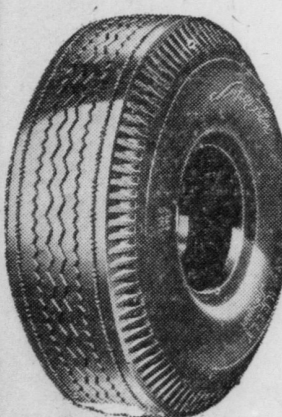
Frozen Seabrook Spinach Leaf or Chopped 2 14-oz pkgs 37¢
Food Ideal Pure Concent. Orange Juice 2 6-oz cans 33¢
Crosse and Blackwell Concent. Frozen Limeade 2 6-oz cans 39¢

LOUELLA MILK It's Homogenized 3 tall cans 38¢
PRINCESS MARGARINE Golden 1/4's 2 lbs 41¢
SLICED CHEESE Glendale American 8-oz pkg 33¢
LOUELLA BUTTER America's Prize (1/4's) lb 75¢
BALA CLUB BEVERAGES + dep. 2 qt bots 23¢
PREMIUM SALTINES Nabisco lb pkg 25¢
MAYONNAISE Fresh Hom-de-Litr 8-oz jar 19¢
SALAD DRESSING Hom-de-Lite pt jar 25¢

September Family Circle Now on Sale - Still 5c

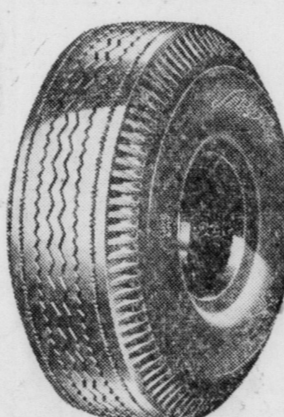
Prices Effective September 3-15, 1953. Quantity rights reserved.

HURRY!
HURRY!
FINAL WEEK
TOP QUALITY-FIRST LINE
KELLY TIRES



6.70-15 SUPER-FLEX
Reg. Price \$22.05 Plus Tax
NOW \$16.55 ONLY PLUS TAX AND OLD TIRE
SAVE \$11.00 PER PAIR
SAVE \$22.00 PER SET

7.10-15 SUPER-FLEX
Reg. Price \$24.45 Plus Tax
NOW \$18.35 ONLY PLUS TAX AND OLD TIRE
SAVE \$12.20 PER PAIR
SAVE \$24.40 PER SET



SAVE UP TO \$30.60 PER SET - OTHER SIZES

GEO. W. LEAMAN

SAVE YOUR CASH — USE OUR EASY PAYMENT PLAN

208 E. Main St. — MOUNT JOY — Phone 3-9351

OPEN MONDAYS AND FRIDAYS TILL 9 P. M.