

28 PCT. CUT IN CIGAR LEAF TOBACCO ACREAGE

Low prices received for 1951 crop Pennsylvania cigar leaf tobacco, and the fact that some of the crop is still unsold, discouraged growers to the extent that they have reduced their 1952 acreage by 28 percent, the State Department of Agriculture announced today.

State Department of Agriculture announced today.

Total 1952 acreage is indicated to be 25,200 acres compared with 34,900 harvested last year, the Department said. The 10-year 1941-50 average is 34,740 acres. Pennsylvania is the top state

in the Nation in the growing of cigar leaf tobacco, but this year's output is expected to be only about one-third of that in 1951, the survey revealed. Total production is estimated at 38,407,000 pounds, 32 percent less than last year and 24 percent below the 1941-50 average. The 1951 Pennsylvania cigar leaf tobacco crop brought an

average of only 19 cents a pound compared with 26.3 cents a pound for the 1950 crop, the Department said. This is the lowest average price since 1943. The outlook for the 1952 Pennsylvania crop was not too good on July 1, the Federal-State survey disclosed. Dry weather, then wet weather in late May and early June delayed planting in the Lancaster area by about ten days. There was still some to be planted after July 1. Cutworms caused serious damage and loss of plants during the hot, dry weather of June. Most fields on July 1 were quite spotty due to replantings and had made rather slow growth.

Xmas Display

(From page 1) In August or September. It was reported much favorable comment was received regarding the display both from local citizens and from out of town. Other communities have been considering changing their displays and have contacted committee members. Members of the decoration committee, representing each of the local organizations participating, are: Burgess Charles Fish, Paris Hostetter, representing council; Lloyd Myers and Steven Supperl, the Sportsmen's Warren Foley, the VFW; Nicholas Leitner, the Junior Chamber of Commerce; Alvin Bigler, the Lions; Ralph Eshelman and John Booth, Rotary; George Weber, Jr., and Simon Horton, the Fire Company; Geo. (Prince) Albert, the Legion; Ed. Lane and Arthur Sprecher, the Chamber of Commerce.

HEMPFIELD SCHOOL OFFICIALS ARE GIVEN REPORT ON MEETING

A joint meeting of the Hempfield Joint Committee and Hempfield Authority was held this week at Landisville when a report of a recent conference with Department of Public Instruction officials at Harrisburg was given. Arthur A. Hackman, supervising principal and a member of the committee which contacted state officials, said the local group was informed to consider a larger building program. He also spoke of the local elementary problem and stated that a larger program should be considered because of the increase in school population in future years.

With Hackman at the conference were: Norman Bowers, William Hoffman, Harry Resler, Clifford Coleman, the architect, and Christ Greider. Coleman also explained to the group new classroom plans as suggested by the Department of Public Instruction for grades seven through 12.

Stimulate your business by advertising in the Bulletin.

Some Stop Signs Obscured, Warns Automobile Club

Keystone Automobile Club says motoring is rendered unnecessarily hazardous at numerous cross-roads, due to the summer's growth of vegetation, which obscures the vision of motorists entering the intersections.

Edward P. Curran, Safety Director of the Club, reported that Keystone is in receipt of complaints from drivers whose lives have been imperiled at obscured road and street crossings. In many cases, property owners do not fully realize the hazard motorists are subjected to, he pointed out, and are quick to take remedial action when the matter is brought to their attention. Others, he said, appear to be indifferent to the danger. The Club official asserted the danger is particularly serious at points where "Slow" and "Stop" signs are obscured.

Motorsists on the "stop" street, he asserted, enter intersections without warnings of danger or knowledge of law violation. At the same time, drivers on highways which the obscured signs are supposed to protect are placed in peril because they are expecting cross traffic to give them right of way and are unprepared for the emergency when vehicles from the

Band Festival To Be Held Here On August 1st

The annual Festival, sponsored by the Mount Joy Band Club, will be held Friday evening, August 1 at the elementary school grounds. The rain date will be Saturday, August 2.

The committees appointed for the festival are as follows: Music will be furnished by the High school band and there will be games for old and young. Refreshments will be served.

Neighbors Help

(From page 1) The women who assisted Mrs. Derr in serving the refreshments were: Mrs. Clarence Lyons, Mrs. J. Harold Newcomer, Mrs. James Mumper and Mrs. Paul Stauffer.

A contract for the work was granted recently to Simon Zook, of Honey Brook, who hoped to be able to start actual work before August 1. Newcomer.

Patronize Bulletin Advertisers

cross-road loom before them. The Club believes motorists should take cognizance of these conditions and approach intersections at greatly reduced speed.

Acme Markets Special Sale of your Favorite Ideal Pork and Beans

Acme Markets Special Sale of your Favorite Ideal Pork and Beans. BIG Week-end FOOD Specials. For a nutritious, easily prepared, economical meal, serve Ideal Beans and Frankfurts.

3 16-oz cans 29c. 2 23-oz cans 29c. Ideal All-Green Cut Asparagus 2 15 1/2-oz cans 55c. Regularly 29c a can. Stock up at this Special Sale!

Neighbors Help (Continued). The women who assisted Mrs. Derr in serving the refreshments were: Mrs. Clarence Lyons, Mrs. J. Harold Newcomer, Mrs. James Mumper and Mrs. Paul Stauffer.

Neighbors Help (Continued). A contract for the work was granted recently to Simon Zook, of Honey Brook, who hoped to be able to start actual work before August 1. Newcomer.

Neighbors Help (Continued). The women who assisted Mrs. Derr in serving the refreshments were: Mrs. Clarence Lyons, Mrs. J. Harold Newcomer, Mrs. James Mumper and Mrs. Paul Stauffer.

Our Meats are Guaranteed to Please You. Special Sale of Acme Freshly Ground Beef 55c/lb. Fryng Chickens Fresh Killed, Pan Ready 55c/lb. Fancy Rib Roast Top Quality Steer Beef 67c/lb. Plate Boiling Beef 25c/lb.

LEAN SMOKED SLAB BACON piece 29c. SLICED LEBANON BOLOGNA 1/2 lb 39c. Fresh Crab Meat Claw 59c/can.

The Cake Everybody Likes! Reg. 39c Virginia Lee La. Ring Cakes Special This Week! 35c.

Virginia Lee Pineapple Iced Layer Cakes ea 69c. Square Gold'n Pound Cake 43c. Apple Filled Coffee Cake 39c. Cinnamon Streusel Leaf 27c. Nut Sticky Buns pkg 6 29c. Why pay 3c or 4c more? - Get Enriched SUPREME BREAD large loaf 15c. Round Bar-B-Q or Long Frankfurt Rolls pkg 8 19c.

SUMMER FRUITS AND VEGETABLES. LARGE VINE RIPENED Honeydews 49c each (No. 9 size). NEW CALIF. BARTLETT PEARS 2 lbs 29c. CALIF. SEEDLESS GRAPES lb 25c. LARGE CULTIVATED BLU-BERRIES pt 29c. EATING OR COOKING APPLES U. S. 1 Red Williams 2 lbs 29c.

Large Waxed Cucumbers 3 for 14c. Fresh Full-Podded Lima Beans 2 lbs 29c. Tender Local RED BEETS bch 5c.

Frozen Foods. Seabrook Spinach Leaf or Chopped 14-oz pkg 23c. Ideal Pure Concn. Orange Juice 2 2-oz cans 29c. Ideal Lemonade Concentrate 2 6-oz cans 29c.

Princess Margarine lb 24c. Louella Milk 4 tall cans 53c. Mayonnaise Hom-de-L. qt jar 49c. Ideal O. P. Tea 3/4 lb pkg 27c. Asco Coffee lb 79c. Mason Jars pts 81c qts 91c. SOFT, FLUFFY UNICY MARSHMALLOWS lb cello pkg 29c. Lady Anne MINT TRUFFELS can 39c.

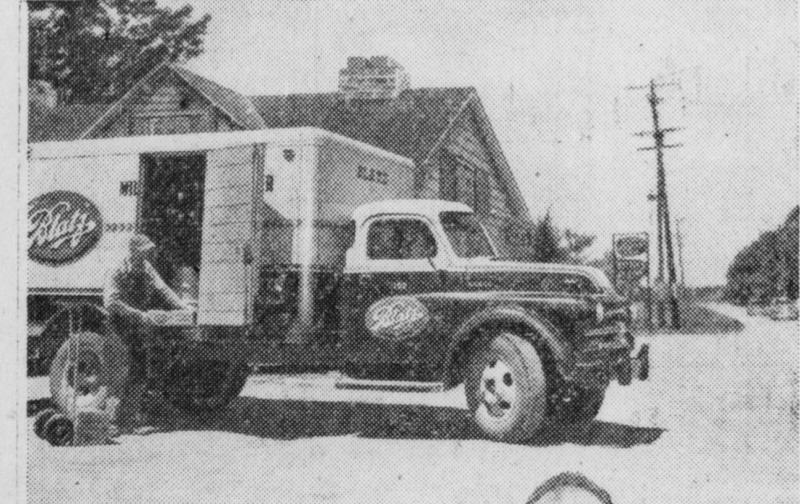
TERRIFIC SALE OF SPEED-UP BLEACH. 2 qt 21c. 1/2 gal jug 21c. gallon jug 39c. Speed-Up gives you Quality at a big saving. Prices Effective July 21-26, 1952. Quantity Rights Reserved.

SUMMER CLEARANCE OF HOME FURNISHINGS

Table with 3 columns: Item, Regular Price, Now Price. Items include Contour Chair, 3 pc. Taylor Living Room Suite, Club Chair By Halligan, Meier-Pohlman Dinette-oak, Meier Pohlman Buffet-oak, Meier-Pohlman Server-oak, Coffee tables - mahogany, Lamp tables - mirror tops, Lamp tables - mahog., Modern Occasional Chair, Reversible Window Fan, Westinghouse Waffle Irons, 3 - Breakfast Sets, 1 - Breakfast Set, Chair & Ottoman By Taylor, 3 pc. Oak Bedroom Suite by Kent Coffey, 3 pc. Modern Waterfall Bedroom Suite, Maple Bed - Double Size, Berk-Lock (3 in 1) chair & ott., Platform Rocker, 2 pc. Sofa Bed and Chair - covered in fabricate, Heywood - Wakefield 3-pc Sectional Sofa, Heywood - Wakefield Chair, Maple Rocker By Kelley, 3-pc. Modern Sectional, Chair and Ottoman to match above modern Sectional, Tilt-Back Chair and Ottoman, Lane Cedar Chest - Wal. Water fall, Lane Cedar Chest - Wal. Waterfall, Lane Cedar Chest - Walnut, Roll 27" Stair Carpet, 9x12 Axminster Rug, 9x12 Axminster Rug, 9x12 Axminster Rug, Summer Furniture and Rugs.

KEENER'S FURNITURE - FLOOR COVERINGS. 15 - 31 MARIETTA AVENUE. PHONE 3-5601. MOUNT JOY, PENNA. STORE HOURS - Mon, Tues. & Thurs., 8 to 6 - Wed, 8 to 12 N. - Fri. & Sat. 8 a.m. to 9 p.m. 30-1c

HAUL WITH A DODGE AND CUT YOUR COSTS!



"Our Dodge trucks give us exceptional over-all economy," says LEO MEUDT, Meudt & Beck Distributing Co., Madison, Wis.

- Cut costs with a Dodge truck "Job-Rated" to fit your job—from 1/2-ton to 4-ton.
- Power-with-economy is the first principle of a Dodge engine, thanks to L-head design, high-efficiency carburetion.
- Low upkeep is engineered into every Dodge truck with features such as floating oil intake and other Dodge advantages.
- gyrol Fluid Drive—available on 1/2-, 3/4-, 1-ton, and Route-Van models—saves wear and tear.
- Come in today for a good deal!

Save on gas and oil. Every Dodge engine is engineered throughout for top economy. Operating costs stay low, thanks to lightweight aluminum-alloy pistons with chrome-plated top piston rings, 4 rings per piston, and other features. Save on maintenance. Dodge "Job-Rated" trucks keep you on the road—and out of the repair shop. You get exhaust valve seat inserts, positive-pressure lubrication system, and other big advantages that help prevent costly breakdowns. Save on long life. Husky frames, sturdy axles and high-capacity springs provide extra strength, lengthen truck life by years and years. Because a Dodge "Job-Rated" truck lasts longer, it will have a high-dollar trade-in value!

DODGE "Job-Rated" TRUCKS

See us today for the best buy in low-cost transportation... STEHMAN BROTHERS -:- Salunga, Penna.

SUMMER SPECIALS

Friday, July 25 to Satur., Aug. 2. STRAW HATS 25% LESS. SPORT SHOES 20% LESS. SPORT SHIRTS (SHORT SLEEVES) 20% LESS. BATHING SUITS 25% LESS. ESHLEMAN BROS. MOUNT JOY, PA.

MORE and MORE COOKIES. Local Trademark, Inc.

More and more people are learning only the individual can really assure his own financial security and independence. You need insurance of course, and you also need a consistent saving program. We'll be glad to help you work out your plan.

The FIRST NATIONAL BANK and TRUST COMPANY of MT. JOY. MT. JOY, PA. Member F.D.I.C.