

Another 10 Acres of Tractors and Farm Equipment

All Day Sale near Elizabethtown R. D. 2, Pa., Phone 442-J-2, Saturday, May 3rd, 1952 at 10:30 a. m. 2 Tons Baler Twine, Hay & Straw, 40 New & Used Tractors, 300 pcs. other Farm Machinery, new and used; Cars, Trucks, 1000 Posts; 200 Hogs, 10 New Holland, Case & IHC Balers, Spreaders, Plows, Drills, Farmers and Dealers bring your New and Used Tractors and Machinery for this sale. Good demand. G. K. Wagner, Manager. Next Sale Saturday, May 24, 1952. 17-2

Musser Leghorn Farms

PUBLIC SALE OF SCHOOL HOUSES

The undersigned will sell at public sale on the premises, the following School House Properties:

(1) McKinley School—1-room, frame, slate roof school house. This building is wired for electricity, contains a coal fired furnace, and is located on a plot of ground containing one half acre, more or less, on the road leading from Manheim to Mount Gretna, Rapho Twp., Lancaster Co., Pa.

(2) Fairview School—1-room, brick school house. This building is wired for electricity, contains room heater, and is located on a plot of ground containing one half acre, more or less, on road leading from Mt. Hope to Mastersville, Rapho Twp., Lancaster Co., Pa.

(3) Chestnut Grove School—1-room, brick school house. This building is wired for electricity, contains room heater, and is located on a plot of ground containing 130 perches, more or less, on road leading from White Oak to Union Square, Rapho Twp., Lancaster Co., Pa.

(4) Chiques School—1-room, frame school house. This building is wired for electricity, contains room heater, and is located on plot of ground containing one half acre, more or less, on road leading from Mastersville to Milton Grove, Rapho Twp., Lancaster Co., Pa.

All these buildings are excellent for remodeling into homes, summer homes or business properties. For inspection apply to H. C. Burgard, Supervising Principal, Manheim Central School District.

MANHEIM CENTRAL SCHOOL DISTRICT

By IVAN M. WITTEL, Secretary. C. S. FRANK, Auctioneer. RICHARD M. MARTIN, Solicitor. 18-3t

PUBLIC SALE OF VALUABLE REAL ESTATE and PERSONAL PROPERTY

Saturday, May 3rd, 1952

On the premises located in the Village of Rheems, opposite school house. LOT OF GROUND 50x175' thereon erected a

2 1/2 Story Frame Double, Slate Roof Dwelling containing six rooms, bath and kitchenette on each side.

ALSO 1 1/2 STORY FRAME BARN can be made into a four-car garage

VACANT LOT adjoining this property 60 ft. frontage and 175 ft. depth. FRAME CHICKEN HOUSE 12x20' on rear of lot.

Immediate possession of Western one-half of dwelling. This property can be viewed at anytime.

Also at the same time and place the following personal property will be offered:

Wine-cool Coal Range; two 3-burner oil stoves; extension table; kitchen chairs; six cane-seated chairs and rocker; platform rocker; bureau; washstand; oak bedroom suite with coil spring; oak bed; clocks; 3-piece living room suite; clothes tree; studio clock; picture and mirrors; Victrola and records; drop head Reliance Sewing Machine; cupboards; radio; General Electric Refrigerator; rag carpet; hook rugs; congolem rug; 9x12 rug; 11x12 rug; desk chair; skillets; two brass kettles; crocks; jars; berry boxes and crates; bushel crates.

ANTIQUES 2 chest of drawers; 2 chests; douchette; rockers; coffee grinder; top sink; sink; butcher block; highchair; walnut sideboard; pine sideboard; walnut drop leaf table; 2 water sets and other antique dishes.

Cot bed; dishes; cooking utensils; garden and butcher tools; scythe; crosscut saw; vise; two iron kettles; wheelbarrow; hot bed sash; harness; ladder; stepladder; and lot of other articles too numerous to mention.

Sale to commence at 12:30 P. M. DST, real estate to be offered at 2:00 P. M., when conditions will be made known by Landis & Kaylor, Clerks. Walter Dupes, Auctioneer. Alford C. Alspach, Attorney. 17-2

PUBLIC SALE OF DESIRABLE REAL ESTATE and PERSONAL PROPERTY

Saturday, May 10th, 1952

On the premises located along Route 241 between Maytown and Bainbridge, near Reich's Church in the Village known as Chickentown. LOT OF GROUND Fronting 179.85 ft. along aforesaid route and extending 181.50 ft. in depth, upon which is erected a

1 1/2 Story Frame Dwelling containing six rooms with two additional rooms for use as summer kitchen. Also

2 Story Frame Dwelling containing five rooms and room for bath.

TWO-CAR GARAGE and WORKSHOP; POULTRY HOUSES. Both dwellings equipped with electricity. Well of never failing water. All kinds of fruit trees; raspberries. Bus service passes these premises to East Donegal School in Maytown. Both properties to be offered as a whole or singularly whichever is preferable.

Premises can be viewed on the evenings of April 29th and May 6th, or arrangements can be made with owner by telephone.

At the same time and place the following household articles will be offered:

Old fashioned sideboard; sink; highchair; Columbia white enamel combination oil and gas range, like new; one-burner oil heater; Wine-cool Heatrola; 5 ft. double drain board sink; Sellers kitchen cabinet; wood box; 6 dining room chairs; living room chairs; drop leaf table; wardrobes; victrola and records; old trunk; Rayo Oil Lamps; Aladdin hanging lamp; rugs; butter box with trays; full line of butcher tools; hog troughs; log chains; tobacco boxes; shears and spears; shovels; forks; oil drums with snouts; single vokes; neck vokes; hot bed sash; apple picker; poultry equipment; nests; feeders and fountains; electric brooder; fire wood; locust posts; and many articles too numerous to mention.

Sale to commence at 1:00 P. M. EDT, real estate to be offered at 2:30 P. M., when conditions will be made known by

WALTER M. LINARD and OLIVIA E. LINARD. PHONE: MARIETTA 6-3283. 17-3

G.K. Wagner's Chickery

BARY CHICKS - DUCKLINGS TURKEY POULTS EVERY WEEK

P. O. Box 236 Phone 442-J-2 ELIZABETHTOWN, PA. Phone or write for Price List 18-1f

PUBLIC SALE Of Valuable Real Estate

FRIDAY, MAY 16th, 1952 Pursuant to an Order of the Court of Common Pleas, the undersigned will offer at public sale at the office of the Mount Joy Bulletin a TRACT OF LAND on Hopewell Street, in the Borough of Mt. Joy with a 1 1/2 STORY FRAME DWELLING thereon erected containing 46 feet on Hopewell Street and extending in depth to the railroad on Friday, May 16, 1952, at 7:00 o'clock P. M. DST, when the terms will be made known by THE FIRST NATIONAL BANK & TRUST CO. OF MT. JOY, Guardian of Charles Cunningham, et al. Charles Frank, Auct. Louis S. May, Atty. 17-3

For Sale NEWTOWN, Rapho Township;

2 1/2 Story Frame Dwelling 9 rooms and bath, steam heat; FRAME BARN

Lot 50 ft. on Center St. by 160 ft. A very desirable home. Reasonable price for prompt sale to close estate. Quick possession.

Also 3 1/4 acres farm land on High St., Newtown. For inspection and terms, call: UNION NATIONAL MOUNT JOY BANK Administrator c.t.a. of Estate of Lillian G. Witmer, dec'd. Arnold, Bricker & Beyer, Attorneys. 17-3

CONFUCIUS SAY EVEN ELEPHANT FORGET MAN WHO NEVER ADVERTISE

Black Market In Potatoes Is Found In Phila. Area

The head of the area office of Price Stabilization at Philadelphia reports a "large black market" in potatoes has been uncovered in the Philadelphia area.

John O'Neill, acting director, said Philadelphians "might well be mulcted out of as much as \$150,000 a week."

He said an investigation started last Friday showed at least 50 retailers were charging as much as 80 per cent above the retail ceiling price.

Some 312 wholesale and retail outlets for potatoes, he said, had been investigated. The probes found overcharges up to 36 cents per five pound bag, O'Neill said.

O'Neill said the retailers were not to blame. Many retailers, he said, had been forced to buy potatoes at what he termed "outrageous prices" or to subscribe to tie-in sales "in order to have potatoes at all."

"In many cases," he said, "the small neighborhood dealer is faced with trying to get higher prices in violation of the price ceilings or going out of business as far as the sale of potatoes is concerned."

O'Neill said there was difficulty in getting evidence to prosecute the violators but said he and his assistants felt they were making progress in "Breaking a manufactured scarcity."

The increases in price have been felt thruout this locality.

K. T. Keller Awarded Highest Masonic Medal



K. T. Keller, Chairman of the Board of Chrysler Corporation and Director of Guided Missiles for the Department of Defense, has been awarded the highest honorary decoration of the Masonic Order's Scottish Rite, the Gourgas Medal, for "notably distinguished service in the cause of Freemasonry, humanity and country."

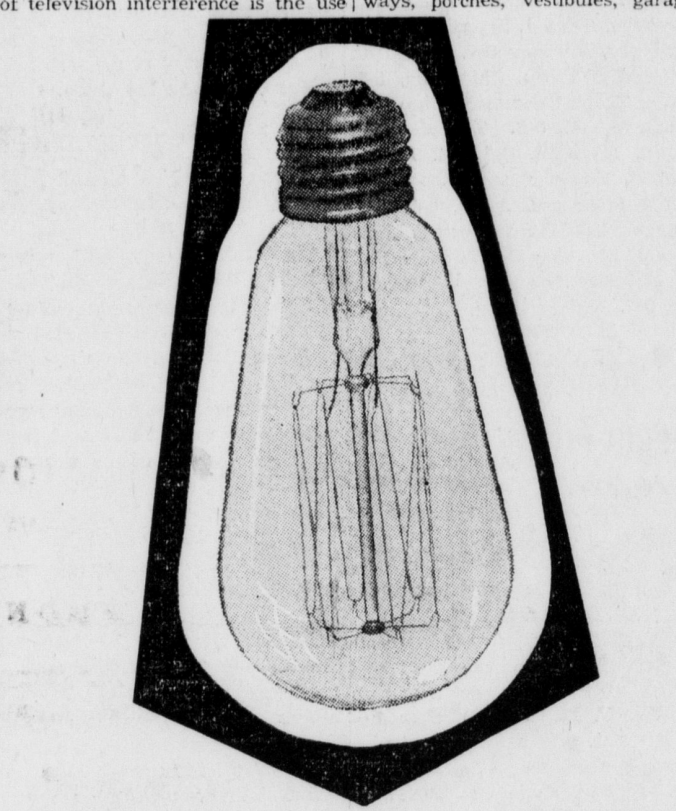
Since its creation in 1938, the Gourgas Medal has been awarded to only three other Freemasons including the late King Gustav V of Sweden for "outstanding service in connection with the International Red Cross," President Harry S. Truman in recognition of his work during World War II as head of the Truman Committee, and Dr. Melvin M. Johnson, Sovereign Supreme Commander of the Masonic Order's Supreme Council, for his contributions in the field of mental hygiene and to Masonry. Mr. Keller, who was coroneted a 33rd Mason in 1942, is the first industrialist to be awarded the Gourgas Medal. He was honored not only for his well-known achievements in industry, but also for his outstanding service to the country in many capacities during both war and peace.

PP&L TO GIVE AWAY LIGHT BULBS FOR THOSE CAUSING TV INTERFERENCE

Pennsylvania Power & Light Company's communications engineers advise that one of the most annoying and little known sources of television interference is the use

placement offer is limited to lamp bulbs brought to local offices during the month of May, 1952.

Mr. Thomas Pennypacker, manager of PP&L's Columbia district, points out that these bulbs are usually found in attics, cellars, hallways, porches, vestibules, garages,



of the old-type, straight-wire filament, clear-glass light bulbs, which was in common use 20 or more years ago.

Interference from these bulbs is so persistent—producing one or two black or wavy horizontal bands on the picture oftentimes affecting television sets several blocks from the source. Nothing sufficiently effective, short of replacing the bulb, has been found to eliminate this nuisance.

In the interest of public service, PP&L will replace, free of charge, all these old bulbs still in working order, with modern, more efficient lamps. The utility company's re-

placement offer is limited to lamp bulbs brought to local offices during the month of May, 1952.

Mr. Thomas Pennypacker, manager of PP&L's Columbia district, points out that these bulbs are usually found in attics, cellars, hallways, porches, vestibules, garages,

The hunt is on and your community-minded company urges you to make a survey of your premises, remove these antiquated lamps (see illustration), and have them replaced, free of charge, at our local PP&L offices and sales rooms not later than May 31, 1952.

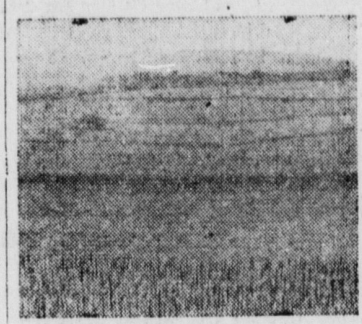


Strip Cropping Helps Hold Soil in Place

It's Only First Step In Conservation Plan

Strip cropping, an important part of soil conservation, is a good deal like putting a splint on a broken bone. The splint holds the bone in place, but it doesn't knit it. Strip cropping helps hold the soil in place, but it won't rebuild run-down fertility.

The above picture is a beautiful example of strip cropping, but it was not accomplished by mere contour plowing. It was accomplished by sound soil conservation, based on use and treatment of land with all proven, appropriate measures that are needed to keep it permanently productive while in use.



Strip cropping on a field just north of Neillsville, Wis., is a beautiful example of one step toward soil conservation.

Sound conservation means terracing land that needs terracing; contouring, strip cropping, and stubble-mulching the land as needed; along with use of supporting measures of crop rotation, cover and green manure crops and the use of the right commercial fertilizers.

No farmer should undertake a conservation program without expert advice. He should first contact any one of his soil conservation district officers and apply for assistance from his district. If he doesn't know who his officers are, he can locate the address of his district office in the phone book, or he can call his county agent. Districts help only farmers who request their assistance.

Assistance may be obtained thru the Lancaster Soil Conservation District in preparing a conservation guide for your farm by contacting the District director nearest you. The directors are: Harry R. Metzler, R2, Lancaster; Henry H. Hackman, Manheim R2; J. Homer Graybill, Manheim R1; Amos Funk Millersville R1; and William M. Fiedt, Quarryville R3.

Other interesting changes were noted; the farms with most practices applied had slightly less acreage in tilled land but produced 10 tons more grain per farm.

With this increase the farmers were able to purchase 135 pounds less grain per animal unit. They also had an average of 20 acres of pasture which was limed and fertilized compared to an average of 4 acres in pasture for the farms with the least conservation. A common expression heard among conservation farmers today is "You don't get me to go back to farming the square fields again."

Assistance may be obtained thru the Lancaster Soil Conservation District in preparing a conservation guide for your farm by contacting the District director nearest you. The directors are: Harry R. Metzler, R2, Lancaster; Henry H. Hackman, Manheim R2; J. Homer Graybill, Manheim R1; Amos Funk Millersville R1; and William M. Fiedt, Quarryville R3.

Conservation Farming Pays

It wasn't too long ago that the neighbors laughed when a man broke up large square fields to start contour farming. They called it crazy farming. But they have seen the results: less erosion and better crops from fewer acres.

A survey made in Southern Lancaster County in 1946 showed that farms with 92% of the needed conservation practices installed produced 18 bushels more corn, 15 bushels more barley and 3 more bushels of wheat per acre. The farmers with the highest percentage of conservation carried 8 more animal units per farm, while milk production was up 10,000 lbs. The increases in yields produced an additional \$2,000 of gross income a year for the conservation farmer, an average increase of \$30 per acre of tilled land, or an average increase of \$18 for each acre in the farm.

Other interesting changes were noted; the farms with most practices applied had slightly less acreage in tilled land but produced 10 tons more grain per farm.

With this increase the farmers were able to purchase 135 pounds less grain per animal unit. They also had an average of 20 acres of pasture which was limed and fertilized compared to an average of 4 acres in pasture for the farms with the least conservation. A common expression heard among conservation farmers today is "You don't get me to go back to farming the square fields again."

Assistance may be obtained thru the Lancaster Soil Conservation District in preparing a conservation guide for your farm by contacting the District director nearest you. The directors are: Harry R. Metzler, R2, Lancaster; Henry H. Hackman, Manheim R2; J. Homer Graybill, Manheim R1; Amos Funk Millersville R1; and William M. Fiedt, Quarryville R3.

Sale Register

If you want a notice of your sale inserted in this register weekly from now until day of sale, ABSOLUTELY FREE, send or phone us your sale date and when you are ready let us print your bills. That's the BEST advertising you can get.

Saturday, May 3—In the village of Rheems, opposite school house, double dwelling, 2 1/2 story frame and personal property, including antiques by Ida G. Brubaker. Walter Dupes, Auct. 12-30

Saturday, May 3—In the Village of Rheems, 2 1/2 story frame double dwelling and personal property by Ida G. Brubaker. Walter Dupes Auct. Sale 12:30 DST.

Saturday, May 10—Along Route 241 between Maytown and Bainbridge, near Reich's Church at Chickentown, 1 1/2 story frame dwelling and a 2 story frame 2-car garage and household goods by Walter Linard and Olivia E. Linard. Walter Dupes, Auct. Sale at 2:30 DST.

Friday, May 16—At the Bulletin Office, Mt. Joy, a tract of land located on Hopewell street with a 1 1/2 story frame dwelling by the First National Bank & Trust Co., Guardian of Charles Cunningham, et al. C. S. Frank, Auct. Sale 7 p. m. DST.

Friday, May 16—At the Bulletin Office on East Main street, Mt. Joy, a 1 1/2 story, frame dwelling on Hopewell street by the First National Bank & Trust Co. of Mount Joy, Guardian of Charles Cunningham, et al. C. S. Frank, Auct. Sale at 7 p. m. DST.

Saturday, May 17, at 1 p. m. DST, a 1-room frame, slate roof school house known as McKinley School located on the road leading from Manheim to Mount Gretna in Rapho township. Frank, auct.

Saturday, May 17, at 3:30 p. m. DST, 1-room brick school house on the road leading from Mt. Hope to Mastersville, in Rapho township, known as the Fairview School. C. S. Frank, auct.

Saturday, May 24, at 1 p. m. DST 1-room brick school house on the road leading from White Oak to Union Square, in Rapho township, known as the Chestnut Grove School. Frank, auct.

Saturday, May 24, at 3:30 p. m., DST, 1-room frame school house on road leading from Mastersville to Milton Grove, in Rapho township, known as Chiques School. C. S. Frank, auct.

All the above school buildings will be sold by Manheim Central School District.

Friday, May 23—On North Market street near school house, 80x200 ft. lot with 2 1/2 story frame dwelling, barn, poultry house and household goods by Mrs. John Shell. Walter Dupes, Auct. 12-30 DST.

Saturday, May 31—On Groff Ave. in E-town. Personal property and many antiques by Raymond R. Risser. Walter Dupes, Auct. Sale at 12:30 DST.



BEAUTIFY YOUR LAWN WITH Scott's

First a meal of TURF BUILDER the complete food for grass. Then a light sowing of SCOTT'S, the all perennial grass seed . . . soon a fresh new world of sparkling green is at your door.

TURF BUILDER—one pound does better feeding job than three of ordinary fertilizer. 25 lbs feeds 2500 sq ft - \$2.50; 10,000 sq ft - \$7.85

Scott's LAWN SEED—Top quality blend 99.91% weed free . . . the deluxe lawn in sun or shade. 1 lb - \$1.50 5 lbs - \$7.35

Scott's "SPECIAL" Seed grows fast so good for new lawns, thrives in sun or shade. 1 lb - \$1.25 5 lbs - \$6.15

H. S. NEWCOMER & SON, Inc. EAST MAIN STREET MOUNT JOY, PENNA.

LET US... Take Care of Your CHICK ORDERS

WITH OUR NEW STRAIN Mt. Hope Leghorns

ALSO WHITE ROCKS WHICH MAKE EXCELLENT LAYERS OR BROILERS

This stock has placed high in the Chick-of-Tomorrow Contest.

A. C. MAYER PHONE MT. JOY 3-9826 4-1f

Saves the day that makes the hay! NEW MEYER Hay Conditioner



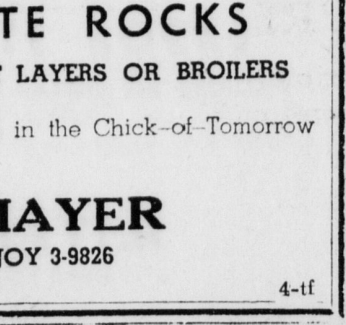
Put Up Your Hay The Day It Is Cut. Condition hay at same time. Stems dry rapidly as leaves. Beat weather hazards.

Puts more milk in your pail — more flesh on your beef — brings more money — saves time and labor.

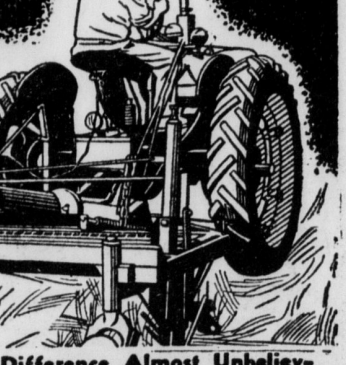
See It On Display Here N. G. HERSHEY & SON MANHEIM, PENNA. 18-4

TRICKS FOR SICK-A-BEDS

JIMMY IS CUTTING A PICTURE ALPHABET OUT OF AN OLD MAGAZINE. HE HAS ALREADY CUT OUT AN ANIMAL. HE IS LOOKING FOR A 'BED'



MOTHER HAS PUT DIME-STORY SURPRISES IN PAPER BAGS, PINNED THEM TO SUSIE'S BED. SUSIE IS PLAYING WITH THE FIRST SURPRISE—CRAYONS!



IF YOU CUT OUT A CAR DRAWN ON A FOLDED PIECE OF PAPER LIKE THIS, IT WILL STAND UP DRAW MANY CARS—STAND THEM ON A TRAY—THE CHILD CAN PLAY "TRAFFIC"

GRAPE JUICE IS AN APPETIZING AND DELICIOUS FRUIT JUICE FOR SICK-A-BEDS. THE FROZEN CONCENTRATE IS VITAMIN C ENRICHED. CHILDREN LOVE IT!

Stimulate your business by advertising in the Bulletin.