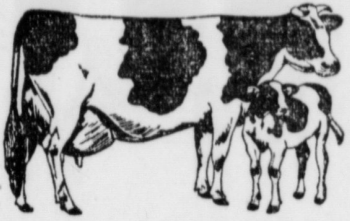


Keystone Holstein Sale

FRIDAY, APRIL 25, 1952
12:30 P. M.

AT THE KEYSTONE SALES BARN ON ROUTE 230 JUST EAST OF MOUNT JOY, PENNA.



60 Head Holsteins

This sale will contain a fine group of cattle consigned by J. Z. Herr, Elizabethtown, Pa., E. W. Newlin, Grantville, Pa., Homer Gabel, Newport, Pa., Robert S. Weidner, Palmyra, Pa., and many others.

A FEW SERVICE AGE BULLS

From Joseph W. Sieber, Jr., McAlisterville, Pa. A son of Luxembourg I Rag Apple Star whose daughters average 13854 milk 3.9% 538 Fat in DHIA and out of a 611 lb. daughter of Greenwood Honor.

We are always interested in consignments of good cattle for our sales held on the second and last Friday of each month.

Keystone Holstein Sales, Inc.

Phone 3-4354 MOUNT JOY, PENNSYLVANIA

PUBLIC SALE

Satur., April 12, 1952—12 o'clock

In Rapho Township on the Phares Mayer farm formerly known as the Clayton Hershey farm on the road from Mannheim to the Mt. Hope Church of the Brethren.

9 HEAD OF COWS
Some are fresh
ONE HEIFER

2 BROOD SOWS, 9 PIGS, 300 CHICKENS

1946 JOHN DEERE B TRACTOR

with cultivator, manure loader, power lift and chains, with wheel weights and hill side hitch. No. 52 John Deere Tractor Plow, Farmall 29 Tractor, David Bradley tractor mower, 2-row tobacco planter, 1-row New Idea tobacco planter, Ontario 8 hoe drill, Mountville corn planter with fertilizer attachment, 2-wheel trailer, rubber tire wagon with bed, David Bradley manure spreader, David Bradley 24-disc, 3-section spring harrow, Massey Harris side rake, McDeering wheel up baler, with 4 wheels, could be used with horses, rubber tire wheelbarrow, feed chest, Kreider tobacco press, sizing boxes, corn sheller, stripping room stove, 2 sets tobacco ladders, 2 sets tobacco horns, 350 tomato baskets.

POULTRY EQUIPMENT
Two coal and one electric brooder, 500 capacity; feeders & fountains, Brooder House 16x12, One range sheller.

DAIRY EQUIPMENT
Surge Milking Machine, complete with 2-unit pump, used three years; McDeering 4-can milk cooler, electric hot water heater, 8 milk cans, buckets and strainer, any and everything used on a farm.

HOUSEHOLD GOODS
4-Burner Bottle Gas Stove, two coal ranges, one oil range, one coal heater, chest of drawers, living room suite, Waterfall dining room suite, cupboards, extension table, jars, 89-piece dinner set, three rugs, Piano, and many other articles.

HAROLD H. LEFEVER, Owner

Henry Shreiner, Auctioneer 14-2

FOUR SCHOOL BUILDINGS ENTERED AND ROBBED

Four school buildings in the northeastern section of the county namely, Terre Hill High, Goodville, Smoketown and Green Bank were broken into and robbed. From the manner in which the thieving was done it appeared as though it was one and the same gang.

10 Acres of Tractors & Farm Equipment

All Day Sale near Elizabethtown R. D. 2, Pa., Phone 442-J-2, Saturday, April 19, 1952, at 10:30 a. m. 2 Tons Baler Twine, Hay & Straw, 10 New & Used Tractors, 300 pcs. other Farm Machinery, new and used; Cars, Trucks, 1000 Posts; 200 Hoes, 10 New Holland, Case 45T, 50T and IHC Balers, 25 Hay Loaders and Combines, Spreaders, Plows Drills, Farmers and Dealers bring your New and Used Tractors and Machinery for this sale. Good demand. G. K. Wagner, Manager. Next Sale Saturday, May 3, 1952. 15-2

MAYTOWN MAN ARRESTED FOR DRUNKEN DRIVING

Paul R. Herr, 22, Maytown, was arrested by state policeman Edward Schaefer following a two-car crash in the Square at Maytown at 8:55 p. m. Wednesday. Police said Herr's car collided with an auto driven by Ralph Gutshall, Maytown. No one was injured. Herr posted bail before Justice of the Peace M. L. Schaefer, Columbia, and waived a hearing for court.

LETTERS GRANTED

Henry F. Garber, Mount Joy R2, and Monroe E. Garber, Elizabethtown R1, executors of the estate of Simon E. Garber, late of Strasburg Township.

William J. Carey, 41, ex-postmaster at Ardmore, was given a suspended sentence for stealing packages from the mail.

PUBLIC SALE

OF VALUABLE

Real Estate and Personal Property

SATUR., APRIL 26, 1952

On the premises located at 344 North Market Street, in the Borough of Elizabethtown.

Lot of ground fronting 72 ft. on North Market Street by 198 ft. thereon erected a

1 1/2 Story Stucco Dwelling

containing six rooms and bath; oil burner, hot water heat; electric hot water heater; laundry and cold cellar in basement; hardwood floors. House is insulated; painted within the last year. **TWO-CAR GARAGE.** Large lawn, outside fireplace.

Immediate possession can be given. Premises can be viewed by phoning 197 or 163 asking for C. W. Breneman.

PERSONAL PROPERTY

Old chests, solid cherry table, marble top table, mahogany tilt-top table, Hitchcock chairs, handmade rugs, quilts, silverware, antique goblets and dishes, dining room and bedroom suites, rugs, Winthrop desk, copper kettles, Singer Sewing Machine, electric stove, electric refrigerator, electric washing machine, other household goods, saddle and bridles.

Sale to commence at 12:30 P. M., real estate to be offered at 2:30 P. M., when conditions will be made known by

Walter Dupes, Auctioneer
Landis and Gorman, Clerks
C. W. BRENEMAN

Administrator of the Estate of Ella H. Breneman

Also at the same time and place, the undersigned, Executor of the will of George R. Breneman, deceased, will offer the following described lots, viz:

A Lot at the corner of Spring Street, known as Lot No. 77 on the plan of lots called North End Addition to Elizabethtown Borough, fronting 90 ft. on Spring Street, and extending in depth along Fairview Street, 140 ft. to an alley.

Also Lots Nos. 50 and 51 on the aforesaid plan, situated at the corner of North Maple and Oak Streets, containing in front on said Maple Street 70 ft. and extending in depth of that width along Oak Street, 140 ft. to an alley.

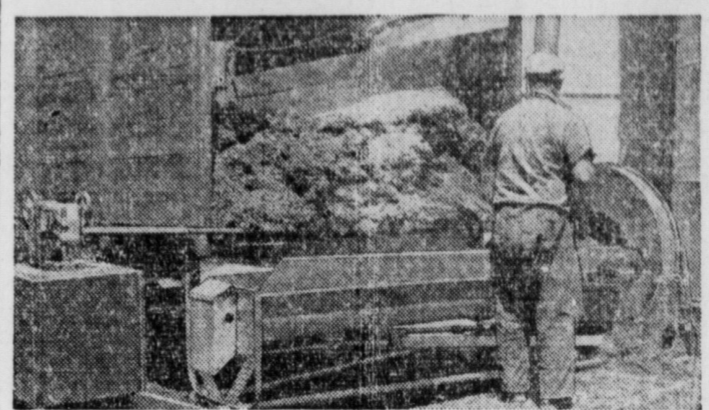
FIRST NATIONAL BANK & TRUST CO.

OF ELIZABETHTOWN

Executor of the will of George R. Breneman, Deceased
Walter Dupes, Auctioneer
D. L. Landis, Clerk 15-2

Farmers Develop Short-cuts to Handle Feed for Stock, Poultry

By IRA MILLER
Farm Electrification Bureau
Feed handling is one of farming's toughest chores. Not only does it consume lots of energy, but it takes plenty of manpower, too. This is true, particularly when it comes to feeding beef cattle. A farmer with 300 steers on his hands will find that they may



SPEEDING UP WORK—with wagon unloader and blower to fill silo.

cut the end gate through a floor chute into storage bins on the second floor. Grain drops by gravity through chutes into feed carts on the ground floor where his cattle are housed. There's a Minnesota farmer whose silage is unloaded automatically from his silo onto a conveyor, which carries it along a 100-foot manger. On an Arizona farm, a conveyor system raises silo from the bottom of a trench silo into a feed truck. In the feed lot, the silage is moved effortlessly into bins, the truck being equipped with a conventional electrically operated unloading mechanism. Poultry farmers have similar mechanical helpers available. A Macon, Georgia, farmer feeds 18,000 chickens in his 50 x 240 foot broiler house the easy way. He dumps feed into a central hopper, where a slow-turning blade stirs it into an endless conveyor chain located in a metal trough. The feed travels a total distance of 950 feet to and from the hopper. A 1/2 hp. motor supplies the power for the whole system. Movement of the chain attracts the chicks, so they eat more—and grow faster. This farmer's system is typical of that used by many poultrymen who have decided that hand-feeding of poultry is one job they can avoid—profitably so.

Opened Bids For

(From Page 1)

per cent interest; Columbia Trust Co., Columbia, \$1,025.00 two per cent interest; DeHaven and Townsend Co., Philadelphia, \$397, one and seven eighths per cent interest.

At the same time the board opened bids for the construction of the new building. Low bids totaled \$125,291.50 for the new building in addition to the amount spent by the board for the purchase of the school site.

General construction bids were submitted by Binkley Construction Co., \$161,100; Ray Klump, Inc., \$98,733; Paul A. Martin, \$105,704; Diller Plank, \$11,972; Rice & Weidman, \$92,900; D. S. Warfel Assoc., \$95,990; and L. S. Weidman, \$106,974.

Plumbing: Everts and Overdeer, \$16,200; Giberson Bros., \$12,850; E. H. Goehener and Sons, \$8,621; Musselman's, \$15,613; George T. Sellers and Sons, \$11,180; Smith-Hoopes Inc., \$14,770; Wolgemuth, Inc., \$16,642.

Heating: Everts and Overdeer, \$20,730; E. H. Goehener and Sons \$18,095; P. E. Gutfleisch, \$20,900; Musselman's, \$19,233; George T. Sellers and Sons, \$19,572; Smith-Hoopes Inc., \$21,240; Wolgemuth, Inc., \$21,836; Huss Heating and Appliance Co., \$19,900.

Electric: R. S. Reidenbaugh, \$9,395; Reliable Electric Service, \$9,420; Shirk Electric Co., \$8,988; and Wolgemuth, Inc., \$13,182. One bid was submitted by Ralph L. Myers and Sons for well drilling at a cost of \$587.50, for a well 150 feet deep.

The school directors indicated that contracts may be awarded for both the bond issue and construction within a week or ten days. Clifford L. Coleman of Coleman, Greiner and Coleman, Landisville, is the architect; and Adolph C. Koehler is the solicitor.

THE BULLETIN

Is on sale each week at Kulp's News Agency and Tyndall's Store, West Main street.

URGES FARMERS TO START BABY CHICKS NOW FOR FALL EGGS

Despite the recent decline in egg prices, it is still good business for farmers to start baby chicks this spring, E. B. Powell, director of research for Purina, stated this week.

"This drop in prices may cause some farmers to give up on baby chicks this year," Powell stated, "and we may wind up with an egg shortage next winter."

Powell pointed out the population growth since the last "baby chick season" will swell the normal demand upwards of a billion eggs next fall. The present market seems to be having a tendency to decrease production too much.

"The logical result of a heavy decline in replacement chicks," he continued, "will be fewer eggs next fall when the chicks put down now will be laying best."

He reminded farmers of a similar market condition a couple of years ago, when the egg market broke sharply in the spring, but bounced back to new peaks the following fall.

"Good weather, better feed and better feeding have combined to make a temporary egg supply larger than usual," he explained. "Obviously, this has forced the egg prices down. But the situation offers an unusual opportunity for egg profits next fall, according to most market experts. And here is their reason—some poultry keepers will not raise chicks this spring. So, there should be fewer pullets and fewer eggs next fall and winter. In the past, this has made extra high egg prices during that time of the year."

"Don't be misled into cutting down on chicks this spring," he cautioned, "let the other fellows quit."

Some poultry flock owners were panicked into getting out of the egg business in 1950 when egg prices dropped to 30.7c that spring. Yet in the fall and winter of '50, prices hit 57.7c per dozen, Powell stated.

"The farmer who has chickens in production next fall should have some mighty good prospects," he concluded, "and he stands a good chance to show a satisfactory poultry profit."

When in need of Printing, (any-thing) kindly remember the Bulletin

TWO COWS MAKE GOOD RECORDS IN RECENT TESTS

With 554.9 pounds of butterfat and 17,112 pounds of milk to her credit, Locustcroft Duke Supreme, a registered Holstein-Friesian cow owned by Harvey Rettew of Mannheim, R. D. has completed a 365-day production test in official Herd Improvement Registry.

She was milked two times daily, and was one year, eleven months of age when she began her testing period.

With 589 pounds of butterfat and 14,303 pounds of milk, testing 4.1%, to her credit, Bessie Pabst Maloline, registered Holstein-Friesian cow owned by J. A. Hook & Herman Ginder, Jr., Mt. Joy R. D., has completed a 330-day production test in official Herd Improvement Registry.

She was milked two times daily and was five years, four months of age when she began her testing period.

Both tests were supervised by Pennsylvania State College, in cooperation with The Holstein-Friesian Association of America.

Sale Register

If you want a notice of your sale inserted in this register weekly from now until day of sale, ADVERTISE FREE, send or phone us your sale date and when you are ready let us print your bills. That's the BEST advertising you can get.

Good Friday, April 11 — At the Borough limits of Mount Joy, 200 head of live stock, all kinds of implements and household goods by C. S. Frank and Leo P. Frank. Sale at 12 M.

Saturday, April 12 — At 117 East High street, Maytown, household goods and kitchen utensils by Christ S. Brandt, Lloyd Landvater, Auct.

Saturday, April 19 — A 2 1/2 story frame house at New Haven and David streets and personal property by Henry B. Klugh, Anna E. Klugh, Union National Mt. Joy Bank, Admsrs., c.t.a. of Estate of B. Frank Watson, dec'd Walter Dupes, Auct.

Saturday, April 26 — At 35 Mount Joy Street, Mount Joy, lot of household goods and kitchen furniture by William Hetrick, C. S. Frank, Auct.

Saturday, April 26 — At 344 North Market St., Elizabethtown, real estate and personal property by C. W. Breneman, Adm. of the Estate of Ella H. Breneman. Also at the same time, several lots by the First National Bank & Trust Co., of Elizabethtown, Executor of the will of George R. Breneman, deceased.

Saturday, April 26 — Along road leading from Mount Joy to Union Square, (about 1/4 mile North of Hossler's School), in Rapho Township, Lanc. County, Pa., Farm and poultry equipment and household goods by Rufus W. Saylor, J. H. Ruhl, Auct.

Saturday, May 3 — In the village of Rheims, opposite school house, double dwelling, 2 1/2 story frame and personal property, including antiques by Ida G. Brubaker, Walter Dupes, Auct.

Handy Jim's
FIX-UP TIPS
For farm and home

For Vegetable Storage
FRUIT and vegetable storage usually is a problem unless there is a specific place for these perishables. Illustrated is a table-height bin for the temporary storage of fresh vegetables and fruit. It may be built of 1 by 2-inch lumber strips and Masonite 1/2" tempered hardboard. A hinged cover provides extra working or storage area.

The top and center shelves slant to give ample storage space and assure that the potatoes, dried onions, oranges, lemons, bananas and other commodities won't roll out. The bottom shelf is flat. Each of the shelves is perforated for ventilation.

Lumber strips in the framework serve also as legs of this bin, which may be used in the kitchen, basement, utility room, or entry hall. Casters may be placed under the legs. Shelves should be put in place during the assembly of the bin, as they are not removable.

This time and work saver may be left in its natural, attractive color, dark brown, or painted to match or contrast with the furnishings.

BABY CHICKS

G.K. Wagner's Chickery

Heavy Breed Special Matings. Barred Rocks, White Rocks, Rock Hamp Crosses, Red Rocks (sex link) Cross, New Hampshire, and White Cross.

14.00 PER 100
All the above breeds are hatched from blood-tested high quality breeders.

TURKEY POULTS & DUCKLINGS

Penna. U. S. Approved Poultry Passed Leghorn Chicks, Utility Mated Leghorn Chicks, Large Type English White Leghorns, NONSEXED 1.90 PULLETS 26.00 COCKERELS 2.00 PER 100 R.O.P. Sired Super Mated Leghorn The Best For Your Money. NONSEXED 14.50 PULLETS 29.00 COCKERELS 3.00 PER 100 Write for Price List & Information OR

PHONE 4123 ELIZABETHTOWN

G.K. Wagner's Chickery

BOX 226, ELIZABETHTOWN, PA.

PUBLIC SALE

Of Personal Property

SATURDAY, APRIL 26th, 1952
The undersigned will offer for sale on the premises situated along road leading from Mt. Joy to Union Square, (about 1/4 mile North of Hossler's School) in Rapho Township, Lancaster County, Penna.

FARM & POULTRY EQUIPMENT
John Deere Model "L" tractor and plow, 500 gal. capacity Beau Sprayer on rubber, Garden Tractor, motor just overhauled, 2-wheel trailer, 2-section spring harrow, potato plow, scower 2 hole, corn sheller, grass mower, 1939 International Panel 3/4 T truck, 1 - 400 can. chick brooder, 1 - 500 electric chick brooder, 900 straight run chicks, 5 weeks old; 1 - 4 bulb heat lamp brooder, 6 - 1 gal. glass chick fountains, chick feeders, large chicken feeders, water pans with grilles, 2 - 10 hole chicken nests, chick battery 2 egg graders, egg baskets, egg separator, wooden egg crates, Range Shelter, 7 ducks, 500 lb. Michigan Peat, chicken coops, 50 gal. drum with pump, 25 Gal. oil drum, 100 tomato stakes, forks, shovels, tools, baskets, crates, 2 Section shifting ladder 24 ft.

HOUSEHOLD GOODS
Living room suite, dining room suite, baby crib, high chair, 1 antique walnut table, old organ, 1/2 doz. old fashioned chairs and rocker, extension table, kitchen cabinet, 4-burner bottled gas range, two heatrols, Portable oil heater, G.E. Refrigerator, Norge 6 cu. ft. Elec. Refrigerator, 3 - 3-rite bottled gas burner with 3 lights and Iron Kettle, horse chest, rockers, small tables, table lamp, pin-up lights, cupboards, radio, meat slicer, 2 market scales, legal for trade, peach baskets, berry boxes and crates, dishes, iron, cooking utensils, cold packers, framing board, carpet by the yard, electric clock, 8 day clock, scatter rugs, and many other articles not mentioned.

Sale to begin at 12:30 prompt when terms and conditions will be made known by

RUFUS W. SAYLOR
J. H. Ruhl, Auctioneer
Hershey & Brubaker, Clerks 15-3

Public Sale

THURS., APRIL 17th

75 Holstein Cattle

(65 Registered - 10 Grades)

T. B. Accredited, Bang Certified, many calfhood vaccinated, milkers mastitis tested.

WILLOW STREET VILLAGE,

Pc., 4 miles south of Lancaster, at Jay M. Brubaker Farm.

—49 Heifers, many due in fall, Some Senior Heifers, Calves and Open Yearlings,
—30 Fresh and Close Springers,
—5 Service Age Bulls.

11th in popular Garden Spot series

Several cows with 500 lb. to 600 lb. fat in DHIA on 2 time milking.

SELLING: More Daughters and Sons of the Famous "Luxmont Admiral Lucifer" than ever before sold in one sale, along with daughters of other popular sires of the Southeastern Artificial Association.

30 well-known breeders of Pennsylvania and neighboring states will sell selected animals.

Buy Better Cows and Heifers at this Oldest Established Penn. Consignment Sale of Holstein Cattle.

Every animal sells at your price without reservation.

Come and Buy With Confidence. Sale starts promptly at 12:00 Noon, lunch available.

R. AUSTIN BACKUS
Sales Manager & Auctioneer
Mexico, N. Y.

EARL L. GROFF,
Local Representative,
Strasburg, Pa. 15-1

TAKE STEPS TO BUSINESS SUCCESS

AT THE BULLETIN

AD AD AD

lowest-priced line in its field!

Yes, Chevrolet brings you lowest prices on model after model... as well as all these fine features found in no other low-priced car!

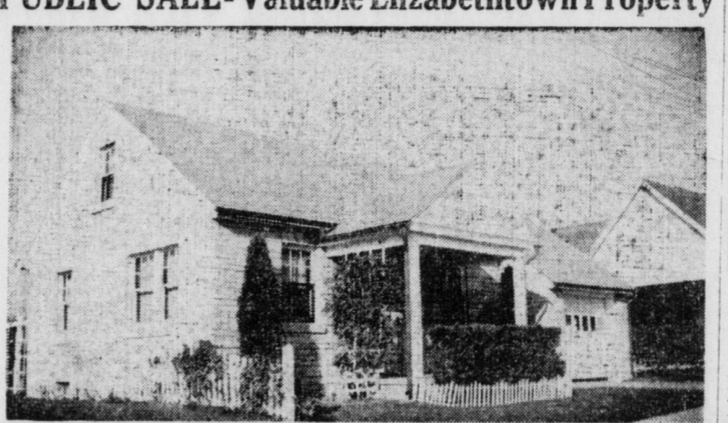
- CENTERPOISE POWER
- LARGEST BRAKES
- WIDEST COLOR CHOICE
- 4-WAY ENGINE LUBRICATION
- CAST IRON ALLOY PISTONS
- SAFETY PLATE GLASS ALL AROUND
- POWERGLIDE AUTOMATIC TRANSMISSION*
- UNITIZED KNEE-ACTION RIDE
- WIDEST TREAD
- BODY BY FISHER
- E-Z-EYE PLATE GLASS
- MOST POWERFUL VALVE-IN-HEAD ENGINE

MORE PEOPLE BUY CHEVROLETS THAN ANY OTHER CAR! **CHEVROLET** The Only Fine Cars PRICED SO LOW!

NEWCOMER MOTORS, Inc.

MOUNT JOY, PA.

PUBLIC SALE-Valuable Elizabethtown Property



40 SOUTH MOUNT JOY STREET

1 1/2 Story, 6 Rooms, Bath, Attached Garage

Oil heat, insulated. Also Corner Lot adjoining.

SATURDAY, APRIL 19 - 11:00 A. M.

Can be viewed Friday, April 18th, 7 to 9 P. M.

Walter Dupes, Auct.
Jack B. Horner, Att'y.

ELIZABETH H. ENGLE
ELMER E. ENGLE

15-1