

# The Mount Joy Bulletin

Jno. E. Schroll, Editor and Publisher

ESTABLISHED JUNE, 1901

Published Every Thursday at No. 9-11 East Main St., Mount Joy, Pa.

Subscription, per year .. \$2.00  
Six Months ..... \$1.00  
Three Months ..... .60  
Single Copies ..... .05  
Sample Copies ..... FREE

Entered at the Postoffice at Mt. Joy, Pa., as second-class mail matter under the Act of March 3, 1879.

Member, Pennsylvania Newspaper Publishers' Association

Publication Day, Thursday  
Copy for a change of advertising should reach this office Tuesday. We will not guarantee insertion of any advertising unless copy reaches the office not later than 9 a. m. preceding day of publication.  
Classified ads will be accepted to 9 a. m. publication day.

## EDITORIAL

With our years of experience in the woods, we were and are still able to follow a deer track fairly accurate but we read of a warden out in Montana who has stopped forty different ways. He can track both men and deer in the snow from an airplane and last week he proved it. He caught two hunters who were trying to get away with an illegally killed deer.

It is an interesting fact that one of retailing's biggest headaches today is declining profits. Stores of all kinds and sizes, including both chain and independents have reported that in many cases profits are at so low a level that it is extremely difficult to carry on operations in the normal fashion. And it must be remembered that in the best of times retail profits are always very modest, representing from one cent to about five cents of each dollar received in sales.

This is the best answer to those bitter consumers who believe, quite sincerely, that inflation and high prices are a boon to the storekeeper. The fact is that he handles a lot more money than he would otherwise—but it goes right out again in higher material costs, higher wages, higher taxes, and higher everything. So very often, next to nothing is left, and in the occasional case actual losses are the result. Retailer and consumer alike are inflation's victims.

### ONE OF THE BIG REASONS

America has but one-sixteenth of the world's population. Yet we produce nearly half of the world's steel; generate half of the world's electric power; and operate almost half of the world's railroads. Our leadership in other fields is equally pronounced.

Many diverse reasons are responsible for this. One of them is realized by relatively few people. It lies in the fact that we have a tremendous abundance of coal—and, equally important, a competitive coal industry which has made the most of the resources that Nature granted us. The tremendous expansion that has taken place in steel, power, and other enterprise could not have been accomplished without an abundance of reasonably priced coal—and coal of many different grades. Today, nearly everything we eat and wear and use depends in some fashion on coal. It has been and remains a basic source of power.

As time goes on, America's appetite for coal continues to increase. It's a huge appetite and a healthy one. To meet the demand, the coal companies have been spending hundreds of millions of dollars for new machinery, new processing plants, and to develop new mines to replace worn-out properties. And the industry has met, as a matter of simple routine, a large foreign demand for coal as well.

Coal is a first-class example of how free, competitive enterprise can develop a great natural resource to the enduring good for all.

### SELF-INTEREST TINGED WITH PATRIOTISM

The wage controversy which has been burning hotly in the steel industry is of the utmost importance because of its potential influence on the whole wage-price inflationary spiral.

The union argues that the current state of the cost-of-living index entitles the workers to an increase in wages. But the union conveniently overlooks the fact that wage increases are what sends that index shooting up—and that if the escalator idea is carried on long enough the inevitable result will be runaway inflation.

Many have observed that the in-

ions have been working on the idea "that wages can be raised without raising prices. As has been said ad nauseum in rebuttal, wages are the principal cost-determining factor in any industry and in the materials used by that industry."

Certainly, union labor has as much to lose from inflation as any other group. What good is a wage boost if the following jump in the cost of living absorbs it and more? Worse yet, inflation is the implacable destroyer of savings, life insurance policies, government bonds, retirement pensions and other such economic protections for the individual. What counts is not the amount of the green stuff in the pay envelope—it is what the green stuff will buy in the way of goods and services.

If the union steelworkers, because of enlightened self interest, tinged with patriotism, were to "hold the line" now—were to withdraw demands for a boost of their already high wage structure—a great victory would be won in the fight against an inflationary threat that is even more to be feared than the atomic bomb. No reasonable man can say that is not true.

## Mortuary Record

(From Page 1)  
wife of Clayton Dasher Aument, Rohrerstown, died at her home after a lingering illness.

She was born in Chiques, Salunga, a daughter of the late Elias S. and Emma Weidman Young, and was a member of the Salunga Church of the Brethren. She resided in Salunga until 1943 when she moved to Rohrerstown.

Besides her husband, she is survived by five sons: Clayton D. Jr., Landisville; Charles E., Salunga; Phares E., Rohrerstown; John H., Mount Joy; and James M., at home. Two daughters, Leta M., wife of Daniel B. Carter, Rohrerstown; and Loretta M., at home; also nine grandchildren, a brother and a sister, Peter Elias Young and Mary A. Young, both of Salunga.

Mrs. Walter K. Brosey.  
Mrs. Lillian Brosey, 82, died at the home of her son, William W. Brosey, at Mastersonville, Manheim R4, Friday. She had been ill for two years.

She was the widow of Walter K. Brosey. Mrs. Brosey was born in Mount Joy township, a daughter of the late Cyrus and Catherine Diefenderfer Wittle.

She is survived by six children: John, of Elizabethtown; Kleman, Bainbridge R1; Eiven, of Manheim, R3; Allen, Manheim; Walter, Westover, Md.; and William, Manheim R4; with whom she resided.

She also is survived by 22 grandchildren, 14 great grandchildren, and 7 brothers and sisters: Agnes, Wittle, Mount Joy; John Wittle, of Florin; Harvey Wittle, of Milton Grove; Cyrus Wittle, Elizabethtown; Christian Wittle, Elizabethtown; Mrs. Catharine Shope, Harrisburg; and Mrs. Andrew Felker, of this borough.

Funeral services were held at the Chiques Church of the Brethren Tuesday afternoon with interment in the adjoining cemetery.

Mrs. Joseph Ginder  
Mrs. Mary A. Ginder, 37, wife of Joseph H. Ginder, Manheim R3, died at her home after a brief illness. Born in Papho Twp., she was a daughter of Bishop Jacob T. and Amanda Auerker Ginder, N. Grant St., Manheim and a member of the Mastersonville Brethren in Christ Church. In addition to her husband and parents she is survived by these children: Joseph, Jr., Jesse, Grace and Dorcas Ginder, all at home. One brother, Bishop Henry A. Ginder, Manheim R2, also survives.

PW&F INCOME SHOWS GAIN FOR PAST YEAR  
Earnings equal to \$2.54 per share of common stock during 1951 were reported by the Pennsylvania Water and Power Co. in its annual report to the stockholders.

The annual report showed the net income in 1951 to be \$1,229,086, an increase of \$161,789 over 1950. The earnings per share of common stock show an increase from \$2.23 a share in 1950. Dividends of \$2 per share were paid on the common stock last year.

### MELTING HERE WEDNESDAY ON SOIL MANAGEMENT

Next Wednesday evening at eight o'clock a meeting will be held in the High School building here at which time soil management will be discussed. You are invited.

## HOW COLLEGE "GRADS" CAN ENTER THE MARINES

College graduates desiring to enter Marine Officer training have until February 26th to file applications.

Candidates who are accepted will be sent through ten weeks officer training at Marine Corps Schools at Quantico, Virginia. This schooling is followed by five months of specialized schooling, also at Quantico.

To be considered, the applicant must be between 20 and 27 years of age, and must be graduates of an accredited college in a field other than dentistry, medicine or theology.

For further information on how to apply visit the Marine Recruiting Station at Old City Hall Building, Penn Square, Lancaster, Pa.

## BOUGHT REGIS. AYRESHIRE

Wilmer G. Graybill, Mount Joy R1, has recently made an initial purchase of one registered Ayrshire. The transaction was recorded in the National office of the Ayrshire Breeders' Association in Brandon where complete records of all registered Ayrshires in the United States have been maintained since 1875.

## Five Girls

Wanted to work in Modern Electrical Laboratory  
Pleasant Working Conditions  
APPLY  
MONDAY, FEBRUARY 25th  
10 a. m. to 3 p. m.  
AIRCRAFT MARINE PRODUCTS, Inc.  
MOUNT JOY, PA.

## 20 Years Ago

Wednesday, Feb. 21, 1932

Through a straw vote by the Literary Digest it was found that 71 percent of the people throughout the country want the 18th amendment repealed. They want wet.

Alner Risser, of Bainbridge, was re-elected president of the Lancaster County Agricultural Extension Association.

The Little School Board reduced its taxes from 25 to 15 mills.

Christ L. Zeck, of Salunga, has donated an \$2-acre farm near Ephrata, to the Elizabethtown Gospel Tabernacle and its affiliated churches to be used as they see fit.

Tell collected on the river bridge at Columbia for the first 15 days of February totaled \$11,486.45.

Stanley Shank met with an accident at Elizabethtown when his auto collided with a milk wagon.

The Rotary Triplets, Elizabethtown, Little and Mount Joy will hold a joint meeting in the High School auditorium here Tuesday evening, March 1.

Robert Williams appropriately decorated The Bulletin's window in honor of George Washington.

The Masonic Homes at Elizabethtown, have planned to install tables in the recreation hall for the entertainment of the guests there.

## "GIGANTIC" Watch Band Sale

YOUR OLD WATCH BAND IS WORTH \$1.00 (Regardless of condition)

ON ANY NEW

GEMEX or SPEIDEL BAND

Trade now and make your watch look new again.

Gemex & Speidel bands start as low as \$5.95 tax incl.

We have a large selection to choose from.

Koser's Watch Shop

DIAL MT. JOY 3-4915

CHOCOLATE AVE. FLORIN, PA.

## C. Robert Fry

MANHEIM R. D. 2, PA.

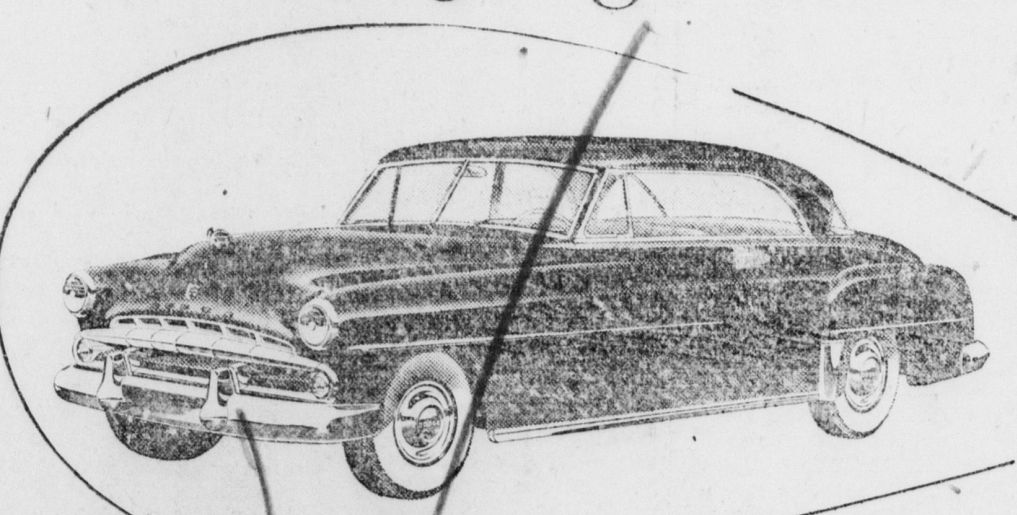
Air Compressor Work  
Rock Drilling, Concrete Breaking, Etc.

Rocks and Trees Removed

Excavating and Grading  
Cellars, Trenches, Etc.

PHONE MOUNT JOY 3-4753

## How you can compare cars and judge value!



Our new "SHOW DOWN" WAY gives you the full facts and free proof you've been looking for!

Where others give you "sell" ... we give you proof!

Stop by soon ... we'll be glad to give you your copy of the "Show Down" booklet that helps you make car-value comparisons so quickly, conveniently, convincingly. Make money-saving comparisons at your leisure!

BE your own expert on car value! Let the facts prove how the big new Dodge for '52 gives you more comfort, safety and economy than even cars costing hundreds of dollars more!  
First of course, you'll want to actually inspect the smart lines and luxurious interior of this big new Dodge. Then ... with the free Dodge "Show Down" booklet ... really get down to "brass-tack" comparisons. You can quickly compare with other cars costing hundreds of dollars more, the Dodge features that give you extra satisfaction even after thousands and thousands of miles.

Specifications and Equipment Subject to Change without Notice

Now, dependable '52 DODGE

NOW ON DISPLAY

STEHMAN BROTHERS

Salunga, Penna.

IMPORTANT NOTICE TO OUR CUSTOMERS!  
In Observance of George Washington's Birthday, All  
A & P STORES and MARKETS WILL BE CLOSED FRIDAY, FEBRUARY 22nd  
OPEN TO 10 P. M. THUR. NIGHT FEB. 21st  
SATURDAY HOURS 8 A. M. TO 6 P. M.



All Prices Effective Wed., Thurs. & Sat., Feb. 20th, 21st & 23rd



WEEK-END SPECIAL! FLORIDA—NONE PRICED HIGHER  
**CRISP PASCAL CELERY** 2 extra large stalks 29¢  
WEEK-END SPECIAL! NEW LOW PRICE! NONE PRICED HIGHER  
**NEW GREEN CABBAGE** lb 5¢  
PENNSYLVANIA BLUE LABEL U. S. No. 1 "A" SIZE  
**POTATOES** 10-lb bag 49¢ 15-lb bag 73¢ 50-lb bag \$2.23  
Apples RED ROME WEEK-END SPECIAL! NONE PRICED HIGHER 3 lb 25¢  
Calf. Carrots NONE PRICED HIGHER 2 large bunches 13¢  
Broccoli WESTERN WEEK-END SPECIAL! NONE PRICED HIGHER large bunch 23¢  
Tomatoes SOLID SLICING NONE PRICED HIGHER Calif. Cn. 19¢

**RAJAH SALAD DRESSING** pint 21¢ quart 38¢  
**GINGERBREAD MIX\*** DROMEDARY \*MADE FROM THE WORLD FAMOUS RECIPE OF GEORGE WASHINGTON'S MOTHER 14-oz pkg 26¢  
**AUNT JEMIMA PANCAKE FLOUR** 2 1/2-lb pkg 26¢ 20-oz pkg 14¢  
**VELVEETA CHEESE FOOD** 2-lb loaf 91¢  
**SWIFT'S CORNED BEEF** REDUCED PRICE 12-oz can 45¢  
**SWIFT'S PREM SAUSAGE** SWIFT'S 10-oz can 45¢  
**SWIFT'S PEANUT BUTTER** REDUCED PRICE 12-oz jar 33¢  
**SWIFT'S SHORTENING** REDUCED PRICE 3 lb can 82¢

**Ken-L-Ration Dog Food** 3 1/2-lb cans 40¢  
**Mushroom Steak Sauce With Mushroom** 2-oz jars 19¢  
**Ritz Crackers** NABISCO 8-oz pkg 19¢ 1-lb pkg 32¢  
**Best Pure Lard** 1-lb pkg 17¢  
**Tomato Soup** HEINZ AND CAMPBELL'S 3 cans 32¢  
**Faust Red Salmon** 8-oz can 49¢  
**Cheddar Cheese** mild lb 30¢ real sharp lb 63¢

**CAMPBELL'S BEANS** 2 23-oz cans 35¢ 2 16-oz cans 25¢  
**GRATED TUNA FISH** REDUCED PRICE! CALIFORNIA 6-oz can 21¢  
**SUNSWEEP PRUNES** LARGE SIZE 1-lb pkg 23¢ LARGE SIZE 2-lb pkg 45¢  
**SCOTTISSUE** 2 rolls 21¢  
**WALDORF** tissue 4 rolls 29¢  
**BRIGHT SAIL SOAP FLAKES** 1-lb pkg 21¢  
**A&P GRAPEFRUIT SECTIONS** FANCY GRADE "A" 2 16-oz cans 29¢  
**STRAINED BABY FOOD** BECHNUT, HEINZ, CLAPP'S, GERBER'S 10 jars 95¢  
**FLOUR** CERESOTA, PILLSBURY AND GOLD MEDAL 5-lb bag 49¢ 10-lb bag 95¢

Fine Foods Needn't Be Expensive When You Buy Ann Page Fine Foods!  
**Salad Dressing** ANN PAGE pint 28¢ quart 48¢  
**Mayonnaise** ANN PAGE pint 33¢ quart 59¢  
**Ann Page Ketchup** 14-oz bottle 19¢  
**Spaghetti** ANN PAGE PREPARED 2 15 1/2-oz cans 25¢  
**Stuffed Olives** ANN PAGE QUEEN 7-oz bottle 45¢  
**Plain Olives** SULTANA 6 1/2-oz bottle 29¢ 10-oz can 39¢  
**Black Pepper** ANN PAGE 2-oz can 37¢ 4-oz can 68¢  
**Tomato Soup** ANN PAGE 3 10-oz cans 29¢

SPECIAL SALE! SAVE MORE THAN 10¢  
**LIPTON TEA BAGS** 1 1/2-lb bag 45¢ REGULARLY PRICED AT 55¢  
SPECIAL SALE! SAVE MORE THAN 10¢  
**LIPTON TEA** 1 1/2-lb pkg 56¢ REGULARLY PRICED AT 66¢  
**LIPTON SOUP MIX** TOMATO-VEGETABLE, NOODLE 13¢

**Oysters Selects** pt \$1.09 1/2-pt 59¢  
**Mild Cheese** lb 49¢  
**Sharp Cheese** lb 63¢  
**Super Right Bacon** 1/2-lb 2/49¢  
**Weiland's Franks** lb 59¢  
**Wilson Hams** 8 to 11 lbs lb 83¢

87 EAST MAIN ST. MOUNT JOY, PA.