

TOYLAND IS OPEN!
Many New Items - Splendid Values
AMERICAN HARDWARE
THE SIGN OF SAVINGS

"Radio Special" ALL STEEL WAGON

Superbly built, handsome one-piece steel body with rolled rim and rounded corners for safety. Wheels are double disc with 3/4" rubber tires. Brilliant red and gray colors with black trim.

\$3.49

NEW! ATOMIC 5 PISTOL

Spring action toy that shoots plastic table tennis balls. Complete with three balls.

\$1.50

SUCTION CUP DART RIFLE **DOUBLE BARREL POP GUN** **RED HANGER CAP-PISTOL**

Fires 7 plastic, cup-tipped darts with accuracy. Darts will not fall out when stock, safety cork cranked. Set are features of this dandy gun. Makes loud noise as each trigger is pulled.

\$1.49 **\$1.15** **\$1.49**

Bright, plated finish on this 7 1/2" over-all gun that fires roll caps automatically. Beautiful ivory plastic grips, engraved body and barrel.

KIDDIE KAR

Well-made, sturdily built toddler's toy should be seen to be appreciated.

\$3.89

MARX Electric Freight WITH REMOTE CONTROL. AUTOMATIC COUPLER

Exact, reproduction of big locomotive in die-cast metal. Brightly colored lithographed steel cars have full details. Uncoupling ramp supplied with 14 sections of track to make 137" oval. Variable speed, Underwriters' approved transformer included in set.

\$9.95

MANY OTHER MODELS AT OUR STORE

ALL STEEL PEDAL AUTOS

"Garton" Push-rod Drive features smooth steering, cushion-riding with large 8" disc wheels topped by 3/8" rubber tires. Pedal gear adjustable for easier pushing.

\$12.95

"Garton" Kidillac Chain Drive is really a beauty in the best 1950 streamlined design. Stamped of one-piece steel, the two-piece pedals make pumping easy on the legs. Size 45" x 20" . . . has 8" disc wheels capped with 1 1/4" balloon tires. See it!

\$29.95

"Gilbert" 11-pc. TOOL CHEST

Complete in 14" long metal box with carrying handle.

\$2.50

STURDY WOODEN TOT'S CHAIR

Double coated in bright red enamel, this well-made chair fits small children perfectly. Only 9" from floor to seat.

\$2.50

A Winchester .22 Rifle, single shot, open sight, bolt action with positive safety lock. Chambered for long, long rifle or short rim-fire cartridges. **\$15.35**

B "Droper-Maynard" Football Gift Set complete as shown. Ball is heavy Peblitec, double-faced with rubber valve bladder. **\$7.75 pr.**

C "Droper-Maynard" Basketball Gift Set has official size and weight basketball and 18" diameter goal. **\$4.95**

D Boy's or Girl's Ice Skates are ponz quality shoes attached to tubular steel blades, fully nickel plated. **\$1.50**

E "Comitus" Jack Knife has quality steel handle, custom-made high carbon steel blades. **\$8.95**

F "Sentinal" Pocket Watch features raised numeral dial, non-breakable crystal, rotary second indicator, chromium-plated case. **\$3.49**

G "Sentinal" Wrist Watch newly designed in 10 kt. rolled gold plate case and genuine leather strap. Really a beauty! **\$2.50**

H "Yankee Clipper" Stod is 36" long, smartly streamlined and strongly built. **\$3.49**

Give an **AAA MEMBERSHIP**

Easy to Get Sure to Please.

Lancaster Auto Club Protects the Member While Driving a Car. Riding in One as a Passenger, Crossing Street, Walking Along Highway, Traveling in Bus or Truck, Riding in Train, Trolley Car, Elevated or Subway or in Commercial Plane . . . \$1,000 to \$1,500 for Accidental Death, \$20 Weekly if Disabled.

Also \$5,000 National Surety Bail Bond, Towing, Road Emergency and Tire Change Service, Notary Service, Daily License Service, Aid of 700 AAA Clubs When Traveling, Many Other Benefits. **PROTECTION EVERYONE SHOULD HAVE.**

Membership, \$7 first year; \$5 yearly thereafter.

LANCASTER AUTOMOBILE CLUB

8, 10 & 12 S. Prince St., Lancaster . . Over 31,500 Members

Electric and Gas Welding

Also Specialize On
FARM MACHINE WELDING AND EQUIPMENT
Automobile and Truck Welding
LAWN MOWER SHARPENING

Cover's Welding Shop

Delta and Marietta Streets
MT. JOY, PA. Phone 3-5931

WHITE - WASHING AND DISINFECTING

HESS BROS.

SUCCESSORS TO HUBER OBERHOLTZER
FLORIN, PENNA.
Phone Mt. Joy 3-4930 39-1f

Corn Fed TURKEYS

NORMAN BECKER
MANHEIM ROUTE 4
Near Becker's Gas Station
PHONE MOUNT JOY 3-5629 45-7f

HOME OWNED **LANCO** FOOD STORES

Thurs. - Friday - Satur.
December 7-8-9, 1950
SPECIALS

We Reserve the Right to Limit Quantities

PURE VEGETABLE SHORTENING	3-lb. Can	95c	1-lb.	35c
DEL MONTE CALIF. SEEDLESS RAISINS	15-oz. Pkg.	25c		
SUNSWEEET EXTRA LARGE CALIF. DRIED PRUNES	2 lb. Pkg.	48c	1 lb.	25c
RICH, WINEY BEECH-NUT COFFEE	1 lb. can	83c		
PENN DUTCH LUSCIOUS CALIF. YELLOW CLING PEACHES	Large No. 2 1/2 can	29c		
SHURFINE FANCY HAWAIIAN CHUNKS PINEAPPLES	Large No. 2 1/2 can	33c		
SHURFINE FANCY CALIF. FRUIT COCKTAIL	Large No. 2 1/2 can	37c		

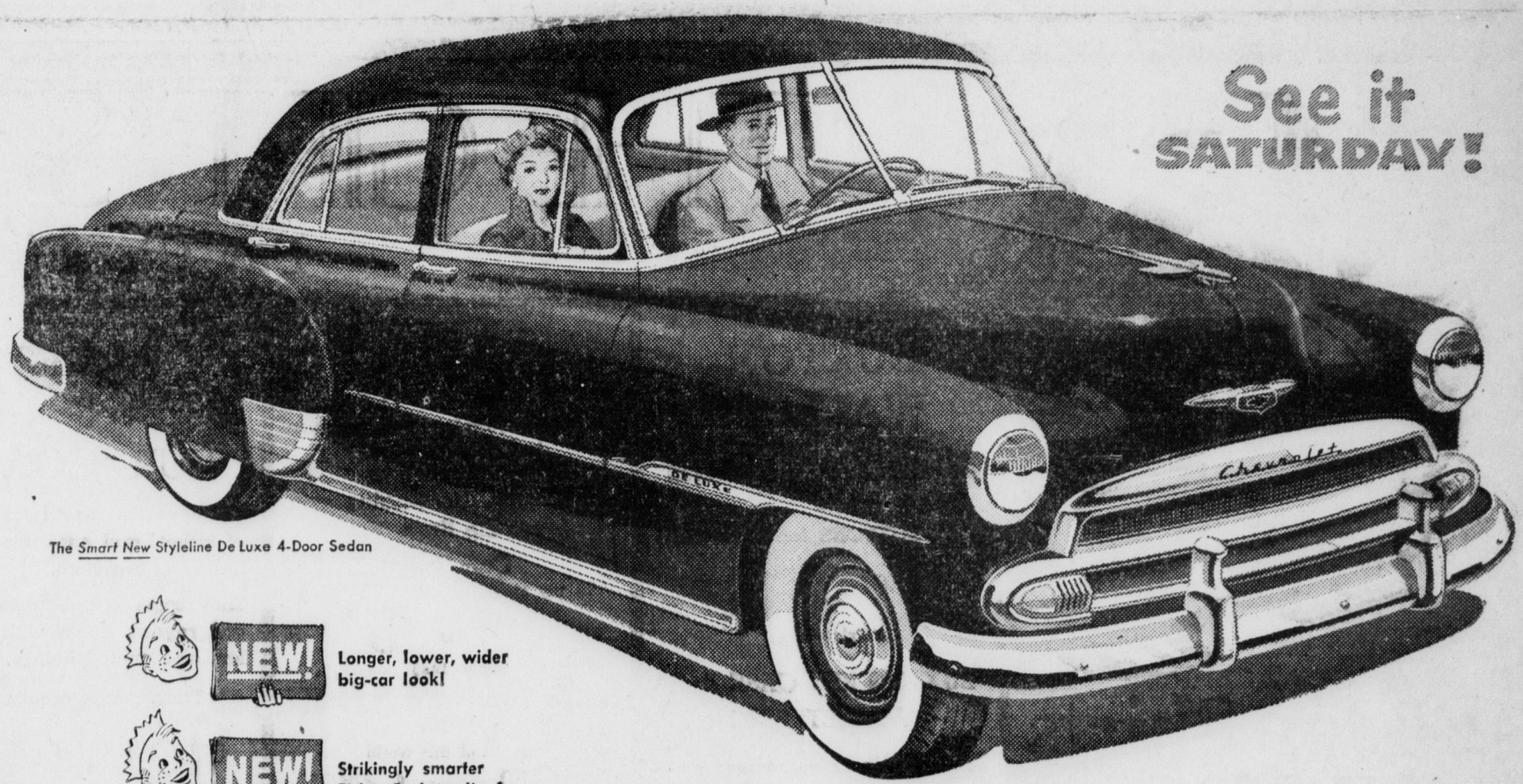
These Lanco Stores and all other Lanco Stores everywhere offer the above Specials

JOHN BENDER, SALUNGA
JOHN BOOTH, MOUNT JOY
BOYERS GROCERY, RHEEMS
L. G. FORNEY, FLORIN
B. O. GROSH, MILTON GROVE
S. G. HERSHEY & SON, ELIZABETHTOWN

ROBT. HOUSEAL, MAYTOWN
VERNE HIESTAND, SALUNGA
EARLE STAUFFER, LANDISVILLE
J. N. WALMER, ELIZABETHTOWN

NEW 1951 **Chevrolet**

AMERICA'S LARGEST AND FINEST LOW-PRICED CAR!



The Smart New Styleline De Luxe 4-Door Sedan

- NEW!** Longer, lower, wider big-car look!
- NEW!** Strikingly smarter Fisher Body styling!
- NEW!** Luxurious Modern-Made interiors!
- NEW!** Jumbo-Drum brakes—largest in field!
- NEW!** Glare-Proof Safety-Sight instrument panel!
- NEW!** Improved, easier Center-Point steering!

Refreshingly new IN ALL THE THINGS YOU WANT!

New outside! New inside! Refreshingly new in feature after feature! That's Chevrolet for 1951!

It's America's largest and finest low-priced car, with distinctive new styling, new front and rear-end design, and new America-Preferred Bodies by Fisher.

And, with all these new things, it also brings you the *proved things*, which make Chevrolet America's top car. It brings you extra-sturdy, extra-

extra-durable Chevrolet construction; it brings you that more thrilling and thrifty Valve-in-Head engine performance for which Chevrolet is world-famous; it brings you comfort feature after comfort feature and safety feature after safety feature found only in Chevrolet and higher-priced cars.

Come in . . . see Chevrolet for 1951 . . . and you'll agree it's America's largest and finest low-priced car.

MORE PEOPLE BUY CHEVROLETS THAN ANY OTHER CAR!



NEWCOMER MOTORS Inc., MOUNT JOY, PA.

H. S. Newcomer & Son, Inc.
Phone 3-3361 MOUNT JOY, PA.