



'The Sheppard Diesel has more power.' says W. F. KLINE Lebanon, R. D. 2, Pa.

'Wonderful' is the way Mr. Kline describes the Sheppard 6M Diesel recently installed in his Farmall 'M'. 'The Sheppard Diesel has more power than the old gas engine had even when it was new...'

- Cuts fuel costs over 75%
Installed in less than a day
No alterations to frame
Permits use of all present implements.

CALL US TODAY FOR A FREE DEMONSTRATION ON YOUR OWN FARM. (No obligation, of course)

Leaman-Evans Co., Inc. MOUNT JOY, PA. Phone 3-9351

DIESEL IS THE POWER... SHEPPARD'S THE DIESEL

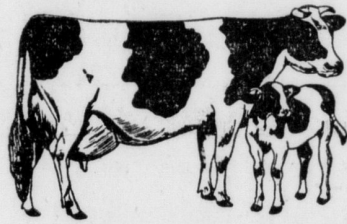
PUBLIC SALE

125 - Head - 125

T. B. ACCREDITED & BANGS TESTED

Saturday, August 26, 1950 At 12:30 o'clock

At our dairy barns located in Lebanon County, three miles north-west of Lebanon, just north of Route 422, 20 miles east of Harrisburg, Penna.



80 Canadian Registered HOLSTEIN COWS

And First Calf Heifers

Most of them are fresh or due in September or October. 40 of them are Vaccinated, including such cows as: SHIRLEY DEWDROP - Classified V. G. Bred to a son of Historian.

6 Registered HOLSTEIN BULLS

of service age, including a son of Triune Lochinvar out of a high testing daughter of Elmcroft Monogram.

A TRUCK LOAD OF SUSQUEHANNA CO. Grade Holstein Springers

Also Selling: 20 Registered Guernsey HEIFERS First Calf

25 Grade Guerneys from Clarion County.

This is a very good lot of cattle, have traveled far to buy them, and took only the desirable animals. They are large, good type, pedigrees that will be appreciated, and best of all good udders.

F. L. Heilman & Son Aucts.—Hess & Dupes, LEBANON, PA. R.4, OWNERS Pedigrees—Harvey Rettew

MACHINERY SALE at Elizabethtown Pa. D. 2. Pa. Phone 442-J-2. Saturday, August 19, 1950, at 11:00 a. m. (DST). 25 Tractors, New and used; Lots of Corn Pickers, New Picker, Binders, Harvesters, Balers, Tools, Drills, Plovers-Disk and other Harrows, Wagons, Combs, Cedar and Lacust Posts, Cars & Trucks, 200 Hogs & Shoats, Notices—Farmers, Dealers, bring in your corn machinery and tractors now, and other machinery. Terms Cash. Next Sales—Saturday, September 2 and 23, 1950. G. K. Wagner's Machinery and Hog Auction. 32-2t

PUBLIC SALE OF PERSONAL PROPERTY FRIDAY, EVENING, AUG. 25, 1950 To be held on the premises located at corner of North Gay Street and West Walnut Street, in the Borough of Marietta.

Friday Evening, August 25—At the Boro limits Mount Joy Cemetery, a very good herd of Toga and Potter country cows.

Saturday, August 26—In the Village of Florin, 2 1/2 story frame dwelling, concrete building, used as a butchering house, 2-car garage, chicken house, steer pen, brooder house, household goods by Geo. S. Vogle, G. K. Wagner, Auct. Sale at 1:30 p. m.

Wednesday, August 30—Valuable real estate in the Borough of Mt. Joy, tract of land 56x203 ft. 2 1/2 story frame house, 229 W. Main Street and 1 1/2 story frame house, 218 W. Main St., also 5 garages on rear. Ella W. Hershey and John A. Hershey, Walter Dupes, Auct. Sale at 7:30 p. m.

Tuesday, September 12—On the farm located in North Annville Twp., Lebanon County, midway between Annville and Jonestown, 43 head of Reg. Holstein Cattle by Raymond C. Miller, R1, Jonestown, Pa. Ebersole & Sawyer, Aucts. Sale at 1 p. m.

Saturday, September 16—On the John Yocum farm, located in Berks County, midway between Rebersonia and Bernville, 89 head of Reg. Canadian Holstein Cows, Heifers, and Bulls. John Yocum and William Wery, Sale at 12:30 p. m.

Saturday, September 23—On the road leading from Landisville to Mechanicsville, on the road known as Colebrook Road, E. Hemfield Twp., 18 acre farm, 2 1/2 story frame dwelling, frame barn, tobacco shed, etc. by Benjamin S. Elysole and Laura G. Ebersole. Sale at 2 p. m. Elmer Spahr, Auct.

Saturday, September 23—On the road leading from Landisville to Mechanicsville, on the road known as Colebrook Road, E. Hemfield Twp., 18 acre farm, 2 1/2 story frame dwelling, frame barn, tobacco shed, etc. by Benjamin S. Elysole and Laura G. Ebersole. Sale at 2 p. m. Elmer Spahr, Auct.

Saturday, September 23—On the road leading from Landisville to Mechanicsville, on the road known as Colebrook Road, E. Hemfield Twp., 18 acre farm, 2 1/2 story frame dwelling, frame barn, tobacco shed, etc. by Benjamin S. Elysole and Laura G. Ebersole. Sale at 2 p. m. Elmer Spahr, Auct.

Saturday, September 23—On the road leading from Landisville to Mechanicsville, on the road known as Colebrook Road, E. Hemfield Twp., 18 acre farm, 2 1/2 story frame dwelling, frame barn, tobacco shed, etc. by Benjamin S. Elysole and Laura G. Ebersole. Sale at 2 p. m. Elmer Spahr, Auct.

Saturday, September 23—On the road leading from Landisville to Mechanicsville, on the road known as Colebrook Road, E. Hemfield Twp., 18 acre farm, 2 1/2 story frame dwelling, frame barn, tobacco shed, etc. by Benjamin S. Elysole and Laura G. Ebersole. Sale at 2 p. m. Elmer Spahr, Auct.

Saturday, September 23—On the road leading from Landisville to Mechanicsville, on the road known as Colebrook Road, E. Hemfield Twp., 18 acre farm, 2 1/2 story frame dwelling, frame barn, tobacco shed, etc. by Benjamin S. Elysole and Laura G. Ebersole. Sale at 2 p. m. Elmer Spahr, Auct.

Saturday, September 23—On the road leading from Landisville to Mechanicsville, on the road known as Colebrook Road, E. Hemfield Twp., 18 acre farm, 2 1/2 story frame dwelling, frame barn, tobacco shed, etc. by Benjamin S. Elysole and Laura G. Ebersole. Sale at 2 p. m. Elmer Spahr, Auct.

Saturday, September 23—On the road leading from Landisville to Mechanicsville, on the road known as Colebrook Road, E. Hemfield Twp., 18 acre farm, 2 1/2 story frame dwelling, frame barn, tobacco shed, etc. by Benjamin S. Elysole and Laura G. Ebersole. Sale at 2 p. m. Elmer Spahr, Auct.

Saturday, September 23—On the road leading from Landisville to Mechanicsville, on the road known as Colebrook Road, E. Hemfield Twp., 18 acre farm, 2 1/2 story frame dwelling, frame barn, tobacco shed, etc. by Benjamin S. Elysole and Laura G. Ebersole. Sale at 2 p. m. Elmer Spahr, Auct.

Saturday, September 23—On the road leading from Landisville to Mechanicsville, on the road known as Colebrook Road, E. Hemfield Twp., 18 acre farm, 2 1/2 story frame dwelling, frame barn, tobacco shed, etc. by Benjamin S. Elysole and Laura G. Ebersole. Sale at 2 p. m. Elmer Spahr, Auct.

Saturday, September 23—On the road leading from Landisville to Mechanicsville, on the road known as Colebrook Road, E. Hemfield Twp., 18 acre farm, 2 1/2 story frame dwelling, frame barn, tobacco shed, etc. by Benjamin S. Elysole and Laura G. Ebersole. Sale at 2 p. m. Elmer Spahr, Auct.

Saturday, September 23—On the road leading from Landisville to Mechanicsville, on the road known as Colebrook Road, E. Hemfield Twp., 18 acre farm, 2 1/2 story frame dwelling, frame barn, tobacco shed, etc. by Benjamin S. Elysole and Laura G. Ebersole. Sale at 2 p. m. Elmer Spahr, Auct.

Saturday, September 23—On the road leading from Landisville to Mechanicsville, on the road known as Colebrook Road, E. Hemfield Twp., 18 acre farm, 2 1/2 story frame dwelling, frame barn, tobacco shed, etc. by Benjamin S. Elysole and Laura G. Ebersole. Sale at 2 p. m. Elmer Spahr, Auct.

Saturday, September 23—On the road leading from Landisville to Mechanicsville, on the road known as Colebrook Road, E. Hemfield Twp., 18 acre farm, 2 1/2 story frame dwelling, frame barn, tobacco shed, etc. by Benjamin S. Elysole and Laura G. Ebersole. Sale at 2 p. m. Elmer Spahr, Auct.

Saturday, September 23—On the road leading from Landisville to Mechanicsville, on the road known as Colebrook Road, E. Hemfield Twp., 18 acre farm, 2 1/2 story frame dwelling, frame barn, tobacco shed, etc. by Benjamin S. Elysole and Laura G. Ebersole. Sale at 2 p. m. Elmer Spahr, Auct.

Saturday, September 23—On the road leading from Landisville to Mechanicsville, on the road known as Colebrook Road, E. Hemfield Twp., 18 acre farm, 2 1/2 story frame dwelling, frame barn, tobacco shed, etc. by Benjamin S. Elysole and Laura G. Ebersole. Sale at 2 p. m. Elmer Spahr, Auct.

Saturday, September 23—On the road leading from Landisville to Mechanicsville, on the road known as Colebrook Road, E. Hemfield Twp., 18 acre farm, 2 1/2 story frame dwelling, frame barn, tobacco shed, etc. by Benjamin S. Elysole and Laura G. Ebersole. Sale at 2 p. m. Elmer Spahr, Auct.

Saturday, September 23—On the road leading from Landisville to Mechanicsville, on the road known as Colebrook Road, E. Hemfield Twp., 18 acre farm, 2 1/2 story frame dwelling, frame barn, tobacco shed, etc. by Benjamin S. Elysole and Laura G. Ebersole. Sale at 2 p. m. Elmer Spahr, Auct.

Saturday, September 23—On the road leading from Landisville to Mechanicsville, on the road known as Colebrook Road, E. Hemfield Twp., 18 acre farm, 2 1/2 story frame dwelling, frame barn, tobacco shed, etc. by Benjamin S. Elysole and Laura G. Ebersole. Sale at 2 p. m. Elmer Spahr, Auct.

Saturday, September 23—On the road leading from Landisville to Mechanicsville, on the road known as Colebrook Road, E. Hemfield Twp., 18 acre farm, 2 1/2 story frame dwelling, frame barn, tobacco shed, etc. by Benjamin S. Elysole and Laura G. Ebersole. Sale at 2 p. m. Elmer Spahr, Auct.

Sale Register

Friday, August 25—At the corner of North Gay and West Walnut St. in the Borough of Marietta, personal property by Susie Dupler, Executrix, Estate of Jacob C. Kautz deceased. Sale at 7 p. m. Walter Dupes, Auct.

Friday, August 25—On South Mt. Joy Street, in the village of Florin, between Nissley Tobacco Warehouse and Washington School, personal property by Mrs. Frances B. Nissley at 12:30 o'clock. C. S. Frank, Auct.

Friday Evening, August 25—At the Boro limits Mount Joy Cemetery, a very good herd of Toga and Potter country cows.

Friday, August 25—At our Sales Barn, East of Mount Joy on Route 230, 72 head of Holstein and Guernsey cows, 2 Bulls, Keystone Holstein Sales, Inc. Sale at 1 p. m.

Saturday, August 26—In the Village of Florin, 2 1/2 story frame dwelling, concrete building, used as a butchering house, 2-car garage, chicken house, steer pen, brooder house, household goods by Geo. S. Vogle, G. K. Wagner, Auct. Sale at 1:30 p. m.

Saturday, August 26—At the dairy barns located 3 miles Northwest of Lebanon, just north of Route 422, 20 miles east of Harrisburg, 80 Canadian Registered Holstein cows and First Calf Heifers, 6 Registered Holstein Bulls, truckload of Susquehanna Co., Grade Holstein Springers, 20 Reg. Guernsey First Calf Heifers and 25 grade Guerneys from Clarion Co., by F. L. Heilman & Son. Sale at 12:30. Dupes and Hess, Aucts.

Wednesday, August 30—Valuable real estate in the Borough of Mt. Joy, tract of land 56x203 ft. 2 1/2 story frame house, 229 W. Main Street and 1 1/2 story frame house, 218 W. Main St., also 5 garages on rear. Ella W. Hershey and John A. Hershey, Walter Dupes, Auct. Sale at 7:30 p. m.

Tuesday, September 12—On the farm located in North Annville Twp., Lebanon County, midway between Annville and Jonestown, 43 head of Reg. Holstein Cattle by Raymond C. Miller, R1, Jonestown, Pa. Ebersole & Sawyer, Aucts. Sale at 1 p. m.

Saturday, September 16—On the John Yocum farm, located in Berks County, midway between Rebersonia and Bernville, 89 head of Reg. Canadian Holstein Cows, Heifers, and Bulls. John Yocum and William Wery, Sale at 12:30 p. m.

Saturday, September 23—On the road leading from Landisville to Mechanicsville, on the road known as Colebrook Road, E. Hemfield Twp., 18 acre farm, 2 1/2 story frame dwelling, frame barn, tobacco shed, etc. by Benjamin S. Elysole and Laura G. Ebersole. Sale at 2 p. m. Elmer Spahr, Auct.

Saturday, September 23—On the road leading from Landisville to Mechanicsville, on the road known as Colebrook Road, E. Hemfield Twp., 18 acre farm, 2 1/2 story frame dwelling, frame barn, tobacco shed, etc. by Benjamin S. Elysole and Laura G. Ebersole. Sale at 2 p. m. Elmer Spahr, Auct.

Saturday, September 23—On the road leading from Landisville to Mechanicsville, on the road known as Colebrook Road, E. Hemfield Twp., 18 acre farm, 2 1/2 story frame dwelling, frame barn, tobacco shed, etc. by Benjamin S. Elysole and Laura G. Ebersole. Sale at 2 p. m. Elmer Spahr, Auct.

Saturday, September 23—On the road leading from Landisville to Mechanicsville, on the road known as Colebrook Road, E. Hemfield Twp., 18 acre farm, 2 1/2 story frame dwelling, frame barn, tobacco shed, etc. by Benjamin S. Elysole and Laura G. Ebersole. Sale at 2 p. m. Elmer Spahr, Auct.

Saturday, September 23—On the road leading from Landisville to Mechanicsville, on the road known as Colebrook Road, E. Hemfield Twp., 18 acre farm, 2 1/2 story frame dwelling, frame barn, tobacco shed, etc. by Benjamin S. Elysole and Laura G. Ebersole. Sale at 2 p. m. Elmer Spahr, Auct.

Saturday, September 23—On the road leading from Landisville to Mechanicsville, on the road known as Colebrook Road, E. Hemfield Twp., 18 acre farm, 2 1/2 story frame dwelling, frame barn, tobacco shed, etc. by Benjamin S. Elysole and Laura G. Ebersole. Sale at 2 p. m. Elmer Spahr, Auct.

Saturday, September 23—On the road leading from Landisville to Mechanicsville, on the road known as Colebrook Road, E. Hemfield Twp., 18 acre farm, 2 1/2 story frame dwelling, frame barn, tobacco shed, etc. by Benjamin S. Elysole and Laura G. Ebersole. Sale at 2 p. m. Elmer Spahr, Auct.

Saturday, September 23—On the road leading from Landisville to Mechanicsville, on the road known as Colebrook Road, E. Hemfield Twp., 18 acre farm, 2 1/2 story frame dwelling, frame barn, tobacco shed, etc. by Benjamin S. Elysole and Laura G. Ebersole. Sale at 2 p. m. Elmer Spahr, Auct.

Saturday, September 23—On the road leading from Landisville to Mechanicsville, on the road known as Colebrook Road, E. Hemfield Twp., 18 acre farm, 2 1/2 story frame dwelling, frame barn, tobacco shed, etc. by Benjamin S. Elysole and Laura G. Ebersole. Sale at 2 p. m. Elmer Spahr, Auct.

Saturday, September 23—On the road leading from Landisville to Mechanicsville, on the road known as Colebrook Road, E. Hemfield Twp., 18 acre farm, 2 1/2 story frame dwelling, frame barn, tobacco shed, etc. by Benjamin S. Elysole and Laura G. Ebersole. Sale at 2 p. m. Elmer Spahr, Auct.

Saturday, September 23—On the road leading from Landisville to Mechanicsville, on the road known as Colebrook Road, E. Hemfield Twp., 18 acre farm, 2 1/2 story frame dwelling, frame barn, tobacco shed, etc. by Benjamin S. Elysole and Laura G. Ebersole. Sale at 2 p. m. Elmer Spahr, Auct.

Saturday, September 23—On the road leading from Landisville to Mechanicsville, on the road known as Colebrook Road, E. Hemfield Twp., 18 acre farm, 2 1/2 story frame dwelling, frame barn, tobacco shed, etc. by Benjamin S. Elysole and Laura G. Ebersole. Sale at 2 p. m. Elmer Spahr, Auct.

Saturday, September 23—On the road leading from Landisville to Mechanicsville, on the road known as Colebrook Road, E. Hemfield Twp., 18 acre farm, 2 1/2 story frame dwelling, frame barn, tobacco shed, etc. by Benjamin S. Elysole and Laura G. Ebersole. Sale at 2 p. m. Elmer Spahr, Auct.

Saturday, September 23—On the road leading from Landisville to Mechanicsville, on the road known as Colebrook Road, E. Hemfield Twp., 18 acre farm, 2 1/2 story frame dwelling, frame barn, tobacco shed, etc. by Benjamin S. Elysole and Laura G. Ebersole. Sale at 2 p. m. Elmer Spahr, Auct.

Saturday, September 23—On the road leading from Landisville to Mechanicsville, on the road known as Colebrook Road, E. Hemfield Twp., 18 acre farm, 2 1/2 story frame dwelling, frame barn, tobacco shed, etc. by Benjamin S. Elysole and Laura G. Ebersole. Sale at 2 p. m. Elmer Spahr, Auct.

Saturday, September 23—On the road leading from Landisville to Mechanicsville, on the road known as Colebrook Road, E. Hemfield Twp., 18 acre farm, 2 1/2 story frame dwelling, frame barn, tobacco shed, etc. by Benjamin S. Elysole and Laura G. Ebersole. Sale at 2 p. m. Elmer Spahr, Auct.

Saturday, September 23—On the road leading from Landisville to Mechanicsville, on the road known as Colebrook Road, E. Hemfield Twp., 18 acre farm, 2 1/2 story frame dwelling, frame barn, tobacco shed, etc. by Benjamin S. Elysole and Laura G. Ebersole. Sale at 2 p. m. Elmer Spahr, Auct.

Saturday, September 23—On the road leading from Landisville to Mechanicsville, on the road known as Colebrook Road, E. Hemfield Twp., 18 acre farm, 2 1/2 story frame dwelling, frame barn, tobacco shed, etc. by Benjamin S. Elysole and Laura G. Ebersole. Sale at 2 p. m. Elmer Spahr, Auct.

Saturday, September 23—On the road leading from Landisville to Mechanicsville, on the road known as Colebrook Road, E. Hemfield Twp., 18 acre farm, 2 1/2 story frame dwelling, frame barn, tobacco shed, etc. by Benjamin S. Elysole and Laura G. Ebersole. Sale at 2 p. m. Elmer Spahr, Auct.



Keep DDT Away From Dairy Cows Experts Cite Danger Of Milk Contamination

The U. S. department of agriculture's entomologists have issued a warning that DDT should not be used for insect control on dairy cows. Even small amounts of DDT in food such as milk—a universal diet for infants and small children—might prove harmful in time, according to toxicologists of the food and drug administration who have studied the subject for several years. They say presence of the chemical in milk would be contrary to the food, drug and cosmetic act.



It may be a temptation to use DDT in order to keep your dairy herd looking as sleek and contented as these animals, but authorities warn against it.

The entomologists now recommend methoxychlor, another effective insecticide, be substituted for DDT to control insect pests on dairy cows.

Federal entomologists make no change in their recommendations for the use of DDT in controlling insect pests on other livestock, including beef cattle.

The department's entomologists, chemists and veterinarians, cooperating in the investigation of the toxicology of DDT and other insecticides, say the application of DDT directly to milk cows for controlling insects results in the presence of small quantities of the insecticide in the milk. They say also that DDT in small quantities can be detected sometimes in milk following ordinary use of the insecticide for fly control in dairy barns.

The bureau of entomology and plant quarantine has repeatedly cautioned that forage treated with DDT and other chlorinated hydrocarbon insecticides should not be fed to dairy animals or to livestock being finished for slaughter. A number of new insecticides are under investigation by federal entomologists for controlling insects on cows and in dairy establishments.

CLASSIFIED

Rates for classified advertising in this column are: 3 lines or less, minimum \$50.00 per line, per month. Each additional line, per month. \$25.00.

FOR SALE: Low back wheel-chair in good condition. Phone Mt. Joy 3-5739. 33-1

NOTICE: If in need of relief from Poison Ivy, Oak or Sumac or other minor skin irritations get Doctor's Prescription 700.084 and you will get immediate relief. Sold by E. W. Garber, 21 Mt. Joy St., Mt. Joy. 28-8

FOR SALE: Six-week-old Fox Terrier Puppies. Phone Mt. Joy 3-4804. 33-1tp

HATS, made & remodeled, DRESS-MAKING, ALTERATIONS, GIFTS, BUTCHER-HOLING, Margaret-Jean Shoppe, 19 W. Donegal St., Mt. Joy. 33-1f

POLAROID MINUTE CAMERAS. Now take Black and white and Sepia pictures, finished in a minute. See samples at Victor Klah: Camera Shop, Middletown. 33-1t

FOR SALE: Banister for a stairway in very good condition. Apply John Fitzkee, 34 E. Main St., Mt. Joy. 33-1

H. L. RICE Plumbing & Heating Phone Mt. Joy 3-4151 15-f

FOR SALE: One good used cast iron oil burning boiler. Capacity 655 ft., hot water. Price reasonable. Phone Mt. Joy 3-3111. 32-f

FOR SALE: Burrows combination cash register and adding machine, like new. Phone Mt. Joy 3-9781. 32-ft

APPRECIATION: We wish to thank our friends and neighbors for their cards, flowers and kindness, during my recent illness. Mrs. Phares Wolgemuth and family. 33-1p

BOY WANTED TO LEARN PRINTING If there is a young man in this community who wants to learn a trade he can get a position at this office if he can "measure up".

THE BULLETIN Mount Joy, Pa.

I BUY all kinds of scrap iron, also steel stove wood. Guy D. Spittler, Phone 3-5373 Mt. Joy. 5-12-ft

FOR SALE: Columbia Range with reservoir #65, Heatrrola (5-room) \$25.00, both used 2 yrs. For appointment, phone Mt. Joy 3-9542. 32-2tp

Typewriters, Add. Mach's, Cash Registers, Check Writers, New and Used. J. M. Engle, 411 E. High St., Elizabethtown, phone 14J. 8-18-ft

FOR SALE: 200 White Leghorn Pullets; 25 Tomato baskets. Samuel E. Merkey, R2 Manheim, Phone Mt. Joy 3-5818. 33-1

FOR SALE: Used Westinghouse Electric Refrigerator, small size, in good condition. 1 S. Market St., Mt. Joy. 33-2

NOTICE TO LOTHOLDERS: The Annual Meeting of Lutholders of the Mt. Joy Cemetery Association will be held on Tuesday, September 12th at 7:30 P. M. in the Office of The Sico Company, 15 Mt. Joy St., Mt. Joy, Pa. 33-4

PAINTERS NEEDED: D. Loraw, Florin, Phone 3-4466, Mt. Joy. 22-ft

FOR AWNINGS - VENETIAN BLINDS - FURNITURE UPHOLSTERING call Columbia 48101 or write to HALDEMAN'S UPHOLSTERY & AWNING SHOP, 11th & Spruce Sts., Columbia, Pa. 26-ft

PAPERHANGING AND INTERIOR PAINTING: We have a fine selection to choose from and prices are reasonable. Alvin L. Givens, Elizabethtown, Pa. Phone 937R12. 30-ft

THREE YEAR POLIO POLICY \$10.00 for the average family Pays up to \$5,000. HOSPITALIZATION INS. RAY N. WILEY Manheim R. D. 2 opposite Mt. Joy Legion Phone Landisville 2201 23-ft

EXPERIENCED SHEET METAL WORKER AND FURNACE INSTALLER APPLY JOS. F. McMICHAEL 25 N. Main St., MANHEIM Phone 5-7912 32-ft

SPENCER SUPPORTS, individually designed. Mrs. Edyth B. Brubaker, Lancaster Rl. Phone Landisville 4374. 27-ft

IF YOU ARE LOOKING for a paperhanger, call Earl C. Brubaker, Rl, Lancaster, Ph. Landisville 4374. 19-ft

ANTIQUES: Will pay high prices for antiques of any description. Mr. Hart, 161 N. Charlotte St., Manheim, Pa. Phone 407. 2-24-ft

OR FARM BUREAU INSURANCE see BENJ. F. GARBBER, 518 South Market St., Elizabethtown, Penna. Phone 23-R. 7-ft

YOUR DRIVER'S LICENSE NEEDS PROTECTION: Careful driving plus State Farm Mutual Auto Insurance's complete coverage will do the job. State Farm's lower rates make it an extra-sound investment. Don't take chances. Under new laws in most states, one mishap can cost you your license unless you can prove financial responsibility. Call or come in today. AMMON R. HOFFER 119 David St., Mount Joy, Pa. Phone 3-4901 33-1

WANTED MEN

Tobacco Factory

J. Roy Nissly & Co., Inc. FLORIN, PA.

AN ORDINANCE TO PROVIDE FOR TRANSFER OF THE BOROUGH WATER SYSTEM TO MT. JOY BOROUGH AUTHORITY WHEREAS, the interests and welfare of the Borough of Mount Joy make desirable and necessary improvements to and extensions of

Approved August 7, 1950 ELMER L. ZERPHEY Burgess

Approved August 14, 1950 J. ROBERT KELLER President of Council

Attest: William F. Brian Borough Secretary

Approved August 14, 1950 ELMER L. ZERPHEY Burgess

Approved August 14, 1950 J. ROBERT KELLER President of Council

Attest: William F. Brian Secretary of Council

Approved August 14, 1950 ELMER L. ZERPHEY Burgess

ANNUAL AUDITORS' REPORT OF THE MOUNT JOY BOROUGH SCHOOL DISTRICT YEAR ENDING JULY 1, 1950

Table with columns: Receipts, Expenditures, Auxiliary Agencies (C), and Debt Service (G). Includes items like Balance on hand July 4, 1949, Taxes, Delinquent Tax, State Appropriation, Non-resident tuition, Loans, Other Receipts, Total Receipts, General Control (A), Secretary's Office Supplies, Secretary's Office Expense, Tax Collector, Auditors, Legal Service, Census Enumeration, Other Expenses, Total, Instruction (B), Salaries of Principals, Salaries of Principals Clerks, Supplies Principals Office, Salaries of Teachers, Textbooks, Supplies, Attending Institute, Tuition, Commencement Exercises, Other Expenses, Total, Sinking Fund Account, Receipts, Expenditures, Total, Resources and Liabilities, Resources, Liabilities, Total.

We hereby certify that we have examined the above accounts and find them correct, and that the securities of the officers of the board are in accordance with law (Section 2613).

Signed: CHRIST H. HERR, Jr. J. ARTHUR MOYER NORMAN H. SPRECHER Auditors.

AN ORDINANCE AMENDING THE ZONING MAP OF THE BOROUGH OF MOUNT JOY, LANCASTER CO., PA. IT IS HEREBY enacted and ordered by the Borough Council of the Borough of Mount Joy, Lancaster County, Pa., that the "Revised Zoning Map" of said Borough which is referred to and made a part of the Zoning Ordinance of said Borough, adopted July 1, 1946, is hereby amended as follows:

Section 1. The following districts or areas heretofore included in Residence A districts of said zoning map, are hereby changed to and shall hereafter be Residence B districts, to wit:

(a) All the area the boundaries of which are as follows: Beginning at the northeast corner of Marietta and Lumber Streets; thence northward along the easterly side of Lumber Street, 543 feet to a point 155 feet south of David Street, bearing the southerly boundary of present Resident B district fronting on David Street; thence eastward along said boundary 150 feet; thence southward along the western boundary of present Residence B district fronting on New Haven Street, 523 feet to the northwest side of Marietta Street; thence southwestward along the northwest side of Marietta Street to Lumber Street. It is the intent hereby that this description shall include all lands which are not now Residence B district, in the area bounded by David, New Haven, Marietta and Lumber Streets, so that