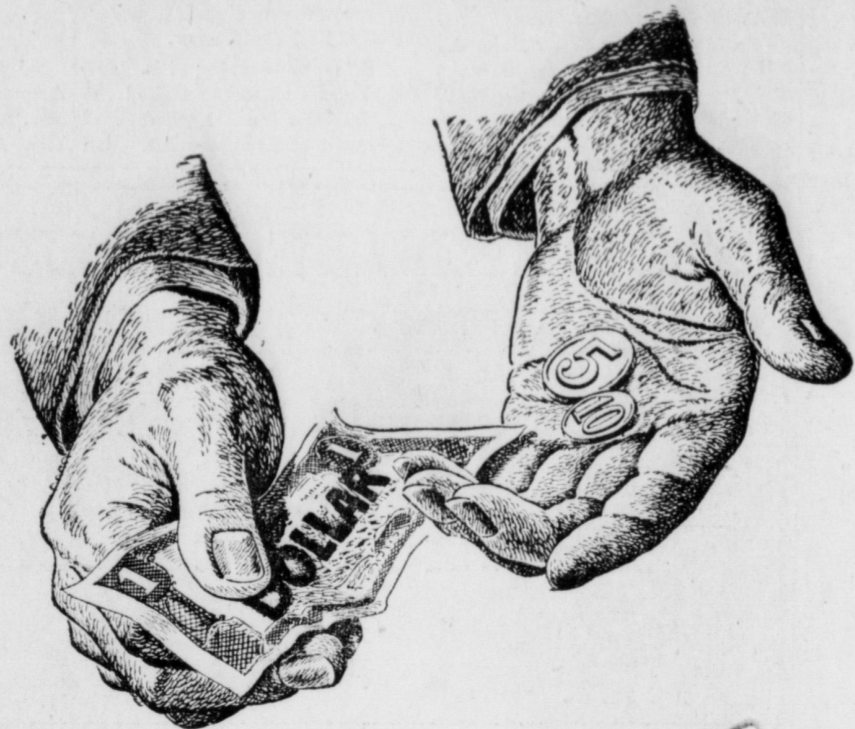


Why Should a Dollar's Worth of Travel Continue to Cost You \$1¹⁵?



"IS THIS TRIP NECESSARY?" you were asked in 1941, when every inch of space was needed for troops and war supplies.

To discourage travel then, a tax was added on your travel dollar, a tax that grew to 15% during the war. The Federal Government collected it through the railroads. The Government still collects it, though your travel need not be rationed now.

Today, the original purpose of this tax is as obsolete as an Air Warden's helmet. But, four years after the war's end, YOU are still paying the Government at the rate of \$250,000,000 a year in travel tax.

And, of the billion and three quarters collected since 1941, *over half* came out of your pocket after the green light on travel went on again.

You don't have food rationing today... you don't have gasoline rationing today.

Yet, a very real brake is still being put on travel. On a coach trip from New York to Chicago, for example, YOU are still paying \$4.61 in Federal tax.

And the same with the goods that are shipped to your home community. On every dollar you pay for freight, you pay the Government an extra 3 cents (4¢ a ton on coal). That means YOU are still paying over \$300,000,000 a year — *freight tax alone*.

This tax should be repealed NOW. There is no longer any reason you should pay \$1.15 for every dollar's worth of travel... \$1.03 for every dollar of railroad freight.

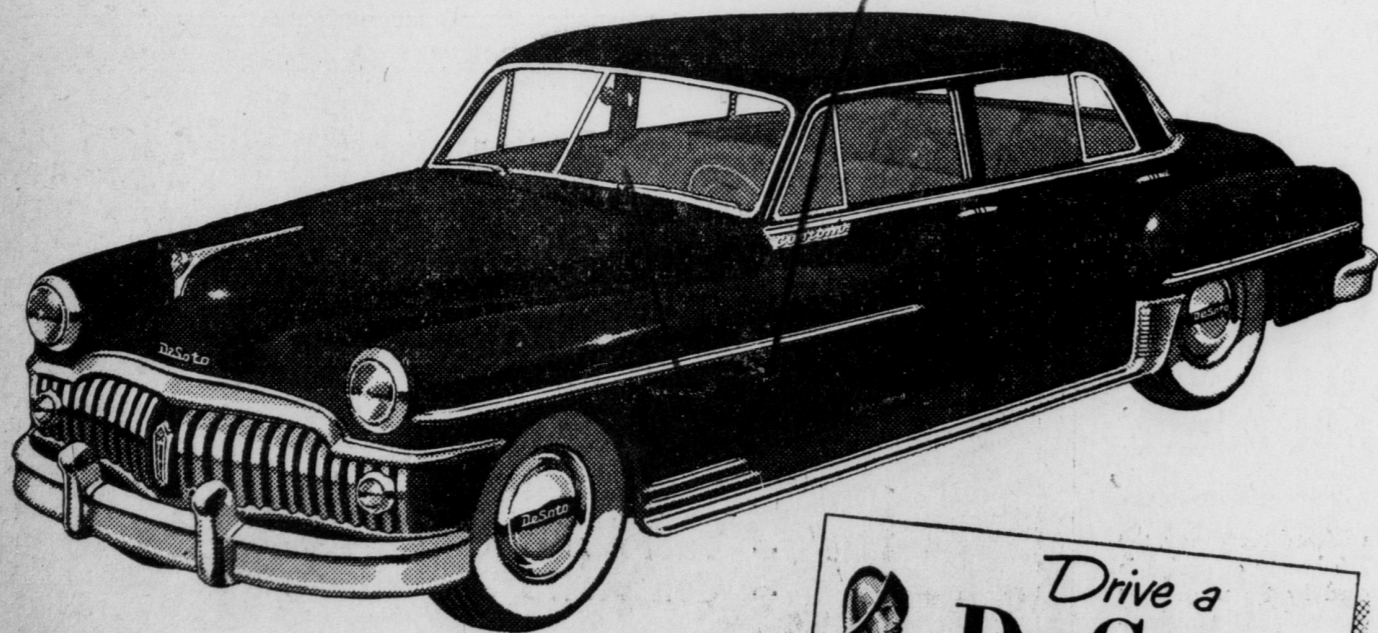
Eastern Railroads

143 LIBERTY STREET • NEW YORK 6, N. Y.

"I just saw the NEW DESOTO!"



"Baby—I just drove it!"



Drive a **DE SOTO** before you decide!

It's NEW and exciting! It's big, beautiful and breath-taking. It's the new De Soto. It could be yours!

This year drive a fine car... one that's got all the room and luxury your heart desires... that lets you drive without shifting... that makes you proud every minute. Drive this De Soto that's brand-new from front to back.

It has Tip-Toe Hydraulic Shift and Fluid Drive... high-compression Power-master engine... new, bigger brakes... feather-light steering... weather-proof ignition... every quality feature you can think of. Yet it is easy to buy and economical to operate. Come in and see it soon. And let us arrange to have you drive it at your convenience.

Tune in THE GROUCHO MARK SHOW, "You Bet Your Life." Every Wednesday night over all CBS stations

ELI AMENT

Delta & Henry Sts.

Mount Joy, Pa.

Dial 3-4264



OUR SALE OF BARGAINS

Too numerous to mention, will continue through Saturday of this week.

H. S. Newcomer & Son, Inc.
MOUNT JOY, PA.



It pleases us that so many women bank here. Whether you want a business or personal checking account — we'll be mighty pleased to have you start it here.



What, We Call News

- Have You Been Visiting?
- Had Visitors?
- Been Divorced?
- Bought Anything?
- Sold Something?
- Had a Party?
- Been To One?
- Got Engaged?
- Been Jilted?
- Joined a Club or
- Been Thrown Out of One
- Had Triplets, Quads or
- Even a Baby?
- Had An Accident?

That's News. Please Tell Us So We Can Print It and Tell Your Friends

The BULLETIN

MOUNT JOY

Phone 3-9661

Acme Super Markets

Your Dollar is Bigger than Ever this Week at the Acme



Another opportunity to save on your food bills. You can eat better and save plenty in this big Dollar Sale... stock your pantry.

4 Varieties Farmdale **SUGAR CORN** 8 20-oz cans \$1
2 cans 29c

DOLE'S **PINEAPPLE JUICE** 3 46-oz cans \$1
can 35c

Ideal Vegetarian or Asco Pork and **BEANS** 12 16-oz cans \$1
2 cans 19c

Farmdale Extra Standard Large, Sweet **PEAS** 8 20-oz cans \$1
2 cans 29c

Ideal, Louella Butter Enriched Tomato **SOUP** 12 cans \$1
3 cans 28c

Hurlock Brand **Tomatoes** 8 No 2 cans \$1
2 cans 27c

Red, Rip **Tomatoes** 10 No 2 cans \$1
2 cans 21c

Ideal Fancy Grade A **APPLE SAUCE** 9 20-oz cans \$1
2 cans 23c

Farmdale Cut **GREEN BEANS** 7 20-oz cans \$1
2 cans 33c

Gold Seal Prepared **Spaghetti** 9 15 1/2-oz cans \$1

Save Up to 20¢ a Lb! **HEAT-FLO ROASTED COFFEES**
Win-Crest Coffee lb 59c
Asco Coffee lb 63c
Ideal Coffee 40-oz Reg. 40-oz Reg. 45c
lb vac can

Virginia Lee Bakery Treats **PEACH BAR CAKES**
A delicious golden bar cake with peach jam ea 35c
Plain Pound Cake 1/2 cake 35c
Date & Nut Loaf Cake ea 29c
Raisin or Jelly Buns pkg 19c

Bisquick 40-oz pkg 45c
Ideal Peanut Butter 12-oz jar 29c

Today's Big Bread Value Supreme Enriched **BREAD** loaf 14¢
It Stays Soft Longer

Acme for Lower Meat Prices!

Tender Lean **Chuck Roast** lb 45¢

Cut-up Fryers Buy the Pieces you want LEGS & BREASTS - WINGS & BACKS - GIBLETS. Fully Dressed and Drawn Fresh Killed Frying **CHICKENS** lb 43¢

LEAN SLICED BACON lb 39c
COUNTRY STYLE FRESH SAUSAGE lb 39c
SLICED BAKED MEAT LOAVES 1/2 lb 25c
Center Cut PORK CHOPS lb 59c
Grab Meat lb 59c
Pollock Fillets lb 21c
Haddock Fillets lb 39c
Fillets of Perch lb 35c
Skinless Frankfurts lb 43c
Fancy Large Shrimp lb 69c

Save Here On Garden Fresh Produce
Fresh Crisp **CARROTS** 2 bchs 19¢
Tender Green **BROCCOLI** full bch 25¢

NEW SOUTHERN CABBAGE lb 5c
RED BLISS NEW POTATOES 3 lbs 25c
FRESH, ORIGINAL BUNCH KALE 2 bchs 19c

Fresh Florida **Strawberries** pt box 29¢
Juicy Florida **ORANGES** doz 35¢ 216 size

LARGE FLA. GRAPEFRUIT 64's 3 for 25c
JUICY FLA. TANGERINES 176's doz 23c
RED EMPEROR GRAPES 2 lbs 25c
U. S. 1 ROMAN BEAUTY APPLES 3 lbs 23c

Roseport Frying Chickens lb 59c
DULANEY BABY LIMA BEANS 12 oz. box 29c

Prices Effective Jan. 26-27-28, 1950. Quantity Rights Reserved.
YOUR DOLLAR BUYS MORE AT THE ACME