

**Dr. H. C. Killheffer**  
Optometrist  
MANHEIM  
163 S. Charlotte St.  
Telephone 137-R  
Mon. & Wednes. 9-5:30  
Tues. Fri. Sat. 7-1 P. M.  
Tues. Fri. Sat.  
9:30-11:00 2-5 P. M.  
ELIZABETHTOWN  
16 E. High St.  
Telephone 24-R

**CHINCOTEAGUE**  
**Oysters**  
— CLAMS —  
**Joe & Tim Schroll**  
33-35 DETWILER AVENUE  
MOUNT JOY, PA.

**FILE THIS AWAY**



But act on it first. You can open a savings account here with as little as \$1.00. Your savings are insured up to \$5,000.

**The FIRST NATIONAL BANK and TRUST COMPANY of MT. JOY**  
MT. JOY, PA.  
Member F.D.I.C.

**CHAP WHO FOUND ESHELMAN PURSE FINED \$50 AND COSTS**  
Earl Styer, thirty-one, 637 E. Madison St., Lancaster, a CTC bus driver who found a money bag containing \$373 in cash on the street here and failed to return it to the owner until police intervened, was fined \$50 and costs when he pleaded guilty in court.

Mrs. Clark Berrier, Mrs. Mumma, Mrs. Katie Wertman, Mr. Jacob Sentz, Martha Sentz, Mrs. Amy Kramer, Miss Anna Holwager, Mrs. Warren Bates and the Rev. L. Dallas Ziegler attended the funeral of Mrs. Samuel Sumpter at Myers-town Wednesday.

**TWO HELD FOR COURT IN THEFT OF \$100 SAW**  
John M. Baughman, forty-four, Maytown, charged with larceny and George E. Hershey, thirty-nine Rowenna, charged with receiving stolen goods, were held for court following a hearing before Justice of the Peace M. L. Schaibley, Columbia Monday night.

Prosecution was brought by a State Policeman Rufus Williams who charged Baughman with stealing an electric saw valued at \$100, from Ralph Guishall, Maytown contractor, Dec. 31. The saw, police said, was recovered in a doghouse on Hershey's premises the day after Baughman's arrest.

**LOCAL JURORS' PAY OF \$5 A DAY IS NOW IN EFFECT**  
The new State law providing higher pay for jurors went into effect at Lancaster with the opening of Common Pleas Court. Henceforth, the county treasurer's office announced, jurors will get \$5 a day instead of \$4 for jury service. Remaining unchanged is the rule that they get 12 cents a mile for the distance they have to drive to reach Court.

**IN A CRASH AT LANCASTER**  
City police are investigating an accident involving cars driven by George J. Weber, 124 E. Main St., this borough, and Christian Wissler, 734 Marietta Ave., Lancaster, on West Orange St., Lancaster at 5:30 p. m. Tuesday. No one was injured.

**AUTO UPSET, DRIVER KILLED NEAR MARIETTA SATURDAY**  
Frank Gilgore, forty, Lancaster, was killed east of Marietta Saturday afternoon. His car swerved on a curve and overturned against a fence post.

**STORE GARDEN TOOLS**  
Be sure to clean and repair the garden tools and then store them where they will not get rusty by spring. Rubbing oil on metal parts prevents rusting.



**Plymouth Has Massive Look**

The front of the new Plymouth has a massive appearance. The grille has been simplified, and the bumper is larger. There's a new name plate in larger block letters, and a bigger, more colorful medallion. The cars look new "both coming and going."

**NEW PLYMOUTH CAR TO GO ON DISPLAY AT AMENTS**  
The 1950 Plymouth car, with important styling changes and improvements for safety and riding comfort will go on display here and throughout the country January 12, Eli Ament announced today.

There are new lines in the silhouette which give the new Plymouth a longer, lower, more streamlined appearance. The changes are readily apparent whether viewed from front, rear, or side.

The new Plymouths may be seen here at Eli Ament's, Delta & Henry Streets, Mount Joy.

Described as "Packed with value and ready to prove it", the new Plymouth was characterized by D. S. Eddins, president of Plymouth, as "The greatest car value we have ever offered the public."

**LEGION AUXILIARY MET**  
Twenty-five members attended the January meeting of the American Legion Auxiliary at the Post Home Tuesday evening.

Five dollars was contributed to the March of Dimes and plans were discussed for a February card party. The committee reported a paid membership of one hundred thirty-four members and would greatly appreciate if all unpaid dues were sent in at the earliest convenience.

The next meeting will be held on Tuesday, February 14th. Refreshments were served after the meeting.

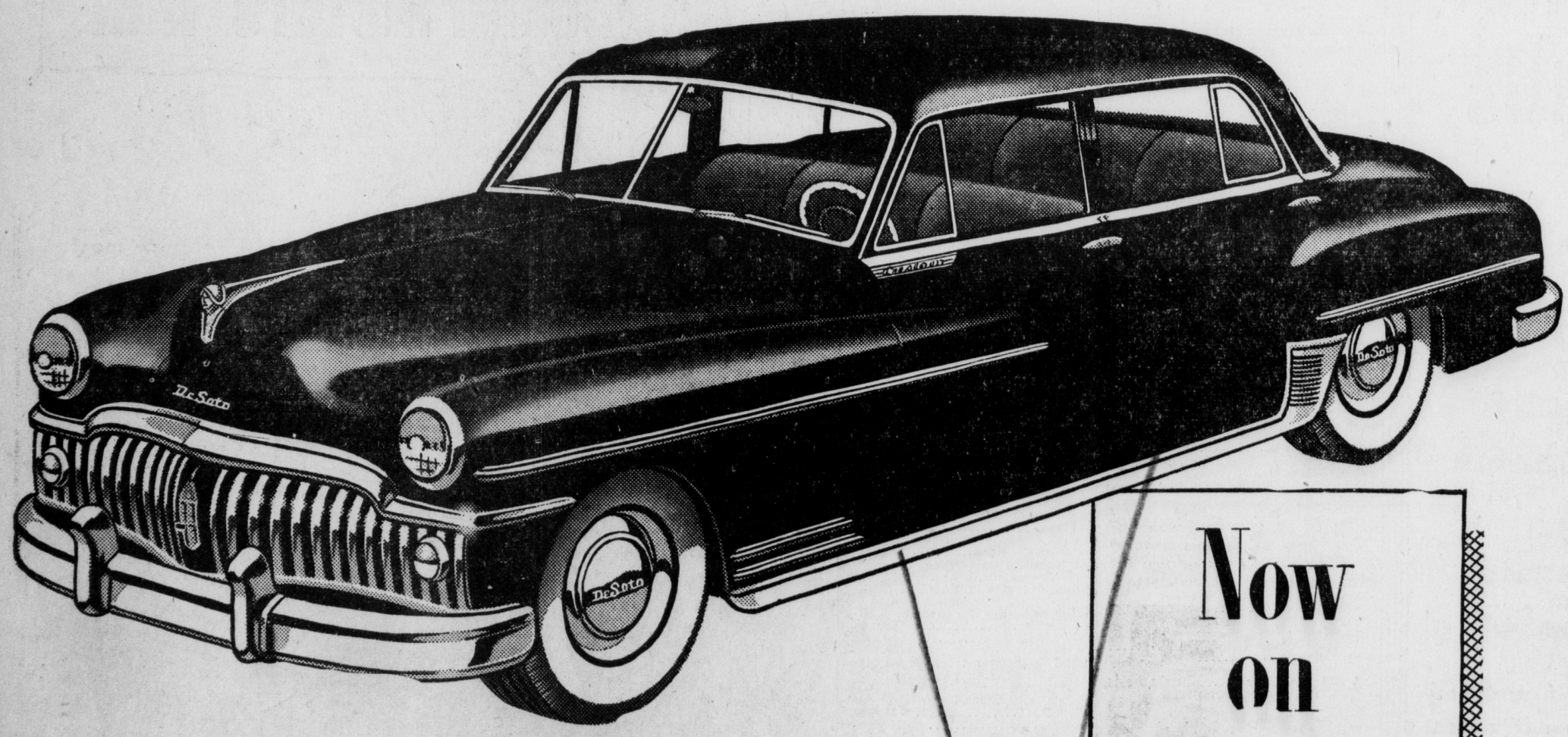
**WANTED \$11,000**

Do you know that a new law is going into effect requiring that you have \$11,000 Financial Responsibility in case of accident? It's wise to have proof of that responsibility handy. And it's wise to let Harleysville furnish it by means of its all-featured Auto Liability insurance. With the policy gone, of course, Harleysville's celebrated helplessness in every time of trouble. Let us explain what this strong, friendly company can do for you.

**Harleysville**  
MUTUAL CASUALTY COMPANY  
HARLEYSVILLE, PA.  
Affiliate: Mutual Auto Fire Insurance Co.

**B. TITUS RUTT AGENCY**  
PHONE 3-9305  
85 East Main Street  
MOUNT JOY, PENNA.  
Insurance plus insurance service.

# Announcing the NEW DESOTO



**Now on display**

Here's the best-looking new car of them all! It's the new DeSoto, designed to give you more room, more comfort, more visibility, more safety and more lasting satisfaction than any car you ever owned. Here's the car designed with YOU in mind.

It's brand-new... not just a few changes. It's waiting for you to come and admire it from handsome new front grille to tail-lights. And it's waiting for you to come and ride in it.

It lets you drive without shifting. It has a terrific high-compression engine, bigger-than-ever brakes, weatherproof ignition, feather-light steering. It's quality engineering at its best. Yet it is excitingly easy to buy and amazingly economical to operate.

No matter which make of car you thought you might buy this year, make yourself this promise... "I will drive a DeSoto before I decide." Let us arrange a demonstration.

Tune in the Groucho Marx Show, "You Bet Your Life," Every Wednesday night over all CBS stations

see **DESOTO** and **PLYMOUTH** at

**ELI AMENT**  
Delta & Henry Sts. Mount Joy, Pa.  
Dial 3-4264

## Acme Markets

**Acme Whole Kernel Golden Sugar**

**Corn 2 31¢**  
20-oz cans

Enjoy its fine flavor as it comes from the can or in fritters, corn Mexican, creole corn or succotash. It's tops in quality and flavor.

**Stock Up!**




- |                        |                     |                 |     |
|------------------------|---------------------|-----------------|-----|
| <b>PINEAPPLE JUICE</b> | Dole's              | 46-oz can       | 35¢ |
| <b>PEACHES</b>         | Ideal Fancy Cal.    | 2 No 2 1/2 cans | 47¢ |
| <b>APPLE SAUCE</b>     | Ideal Fancy         | 2 20-oz cans    | 23¢ |
| <b>CALIF. PRUNES</b>   | Rob-Ford Fancy Med. | 2-lb pkg        | 37¢ |
| <b>PINEAPPLE</b>       | Del Monte Sliced    | 2 20-oz cans    | 55¢ |
| <b>ENRICHED MILK</b>   | Farmdale            | 4 tall cans     | 45¢ |

**Ideal Fancy Purple PLUMS**

**2 45¢**  
No 2 1/2 cans

These delicious plums are packed in extra heavy syrup. Serve them cold for a real dessert.



- Fresh Virginia Lee Bakery Treats**
- Golden Macaroni Crunch Bar Cakes ea 35¢
  - Maraschino Peppermint Bar Cakes ea 39¢
  - Banquet Pound Cakes ea 49¢
  - Fruit Topped Coffee Rings ea 35¢
  - Jelly or Almond Filled Buns pkg 6 19¢
- THE TOAST OF THE TOWN SUPREME BREAD** large loaf 14¢  
Supreme Raisin Bread plain 19¢ iced 20¢

- Fresh Vegetables and Fruit**
- Large Florida **GRAPEFRUIT** 3 for 25¢ 64's
  - Large Florida Tangerines 17's doz 25¢
  - U. S. 1 Roman Beauty Apples 3 lbs 23¢
  - Western Delicious Apples 3 lbs 35¢
- Fresh Green BROCCOLI** bch 25¢  
**Washed and Prepared SPINACH** cello pkg 19¢
- U. S. 1 Red Southern Yams 3 lbs 29¢
  - New Southern Green Cabbage 3 lbs 17¢
  - Florida Radishes bot 5c
  - Red Emperor Grapes 2 lbs 29¢
  - Large Peppers ea 5c
  - Fresh Mushrooms pt 25c
- VENTURA FORDHOOK LIMA BEANS 12-oz pkg 33¢

- Special MEAT BUYS**
- Country Style FRESH SAUSAGE** lb 39¢
- Rib Roast** Top Quality Steer Beef lb 59¢
  - Pork Loin** Lean, Rib End lb 37¢
  - PICNICS** Lean Smoked lb 33¢
  - Chickens** Fully Dressed Frying or Stewing lb 43¢
  - CENTER CUT PORK CHOPS** lb 59¢
  - LEAN SLICED BACON** lb 43¢
- Top Quality Slab Bacon Whole or Half Piece lb 33¢  
Baked Meat Loaves 1/2 lb 25¢  
Skinless Frankfurters lb 43¢
- Fancy Pollock Fillets lb 23¢  
Haddock Fillets lb 35¢  
Fancy Large Shrimp lb 69¢  
Claw Crab Meat lb 65¢

**Our Heat-Flo Roasted Coffees** Save You Up to 20¢ a lb

Enjoy the finer, richer flavor of our selected, exclusive blends at a real saving. Freshly ground when purchased.

- Win-Crest Coffee lb 59¢
- Asco Coffee lb 63¢
- Ideal Coffee 1/2 lb Reg. lb var can 69¢

**Saturday is the Last Day!**

**Priscilla Dinnerware Offer Expires January 14th**  
Get your cards punched! Complete Your Sets. All orders will be filled.

- Price Sale Blue Suds** Get 2 pkgs for only 15¢
- PRESERVES** Ideal Pure Strawberry 16-oz jar 35¢
  - QUICK OATS** Gold Seal 48-oz pkg 31¢
  - SHORTENING** Cream White Vegetable 3 lb can 69¢
  - Gold Seal Enriched All Purpose FLOUR** 10-lb bag 69¢
  - Rinso, Duz or Super-Suds** 1-gal pkg 26¢

Prices Effective January 12-14, 1950. Quantity Rights Reserved.  
**YOUR DOLLAR BUYS MORE AT THE ACME**

F  
M  
O  
D  
T  
Joy  
tion  
wives  
16, in  
gelical  
with  
their  
The  
n delic  
bles  
with f  
of che  
Mr. G  
sented  
compar  
After  
meeting  
preside  
195  
Th  
Wit  
Penn  
taken a  
Out of  
Show a  
has cor  
advance  
has sel  
As m  
Show t  
It had  
cousine  
was di  
attend  
55,000  
many  
was a  
food pr  
second  
State.  
Just  
Farm S  
l that  
tingly  
ary of  
5th an  
of the  
State F  
in Octo  
cities o  
There w  
cultural  
Show st  
The 1  
vania  
ITS TIM  
THAT I  
Your  
January  
when y  
license  
County  
he orde  
Public,  
Alderm  
of age  
license  
\$2.10 an  
\$1.10.  
SEWING  
A mee  
Economic  
School  
relative  
for adult  
There  
to warr  
persons  
the High  
your nam  
If we  
enrolled,  
CARED P  
The La  
Lunga F  
public en  
age Frid  
at 8 o'cl  
500 will  
will be  
be sold.  
LOCALS  
In a  
Quarryvil  
gregation  
of 91 to  
points.  
CARE FO  
Take go  
After 24  
well-vent  
be packe  
the eggs  
perature  
relative h  
Joseph  
at New H  
created, r