



ANNOUNCEMENT
OUR SHOP WILL BE CLOSED
FOR THE WEEK
TUESDAY, JULY 19th to 26th
Modern Beauty Salon
 WEST MAIN STREET, MOUNT JOY, PENNA.

Is there a checking account service free of charge?



If you keep enough money in your account to offset the cost of the service you receive, no charge is made. The amount of the balance you will need to carry depends on the number of checks you draw. If you will drop in at the bank, we will be glad to explain checking account service charges and how they are applied.

THE UNION NATIONAL MOUNT JOY BANK
 MOUNT JOY, PA.



IN UNION THERE IS STRENGTH

Member of Federal Deposit Insurance Corporation

DANGER AHEAD

Insure Now!

New financial responsibility laws in most states make auto insurance more important than ever! If you have an accident—and can't post security up to \$11,000 you lose your right to drive! And a damage suit may wipe out your life savings! Insurance is proof of your financial responsibility—protection against financial loss. Let us show you why it pays to insure with State Farm Mutual!

AMMON R. HOFFER
 119 David St. Phone 3-4901 Mt. Joy, Pa.

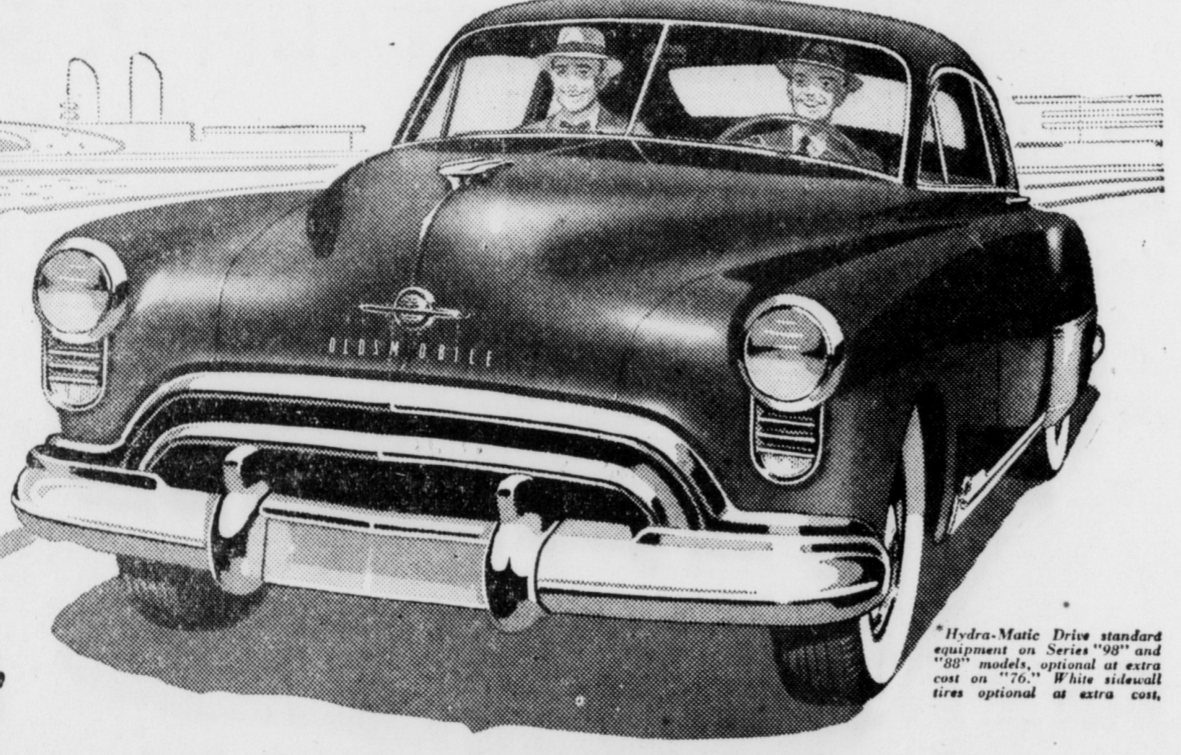
STATE FARM MUTUAL AUTOMOBILE INSURANCE COMPANY
 BLOOMINGTON, ILLINOIS
 STATE FARM LIFE & ACCIDENT INSURANCE COMPANY

PHONE YOUR OLDSMOBILE DEALER



LOWEST-PRICED "ROCKET" ENGINE CAR!

Just call your Oldsmobile dealer's number—and you'll have a date with the "hottest number" on the highway! That's the Futuramic "88"—the car motorists everywhere are talking about. They're excited by the "88's" exclusive combination of "New Thrill" features: That spectacular, gas-saving power plant, the "Rocket" Engine! A brilliant new Body by Fisher—roomy, comfortable, yet more compact! Hydramatic Drive*—for effortless motoring ease! Futuramic styling—panoramic vision—and much, much more. It's the most modern, the most exciting car you've ever known! But to appreciate the "88," you'll have to take its wheel! You'll have to try its fleet flexibility—its spirited eagerness—in every highway situation! And your nearby Oldsmobile dealer is ready and willing to arrange this "drive of a lifetime." So find his telephone number below. Call him today. And soon you'll know the most thrilling "New Thrill" of all—a demonstration date with the Oldsmobile "88!"



FUTURAMIC OLDSMOBILE A GENERAL MOTORS VALUE

PHONE YOUR NEAREST OLDSMOBILE DEALER

Phone 3-4821, NEWCOMER MOTORS, Inc.
 or visit CORNER MAIN & NEW HAVEN STS.

DESIRABLE LOTS FOR SALE

ON Marietta-Lancaster Pike and Mount Joy-Columbia Pike. One mile north of Kinderhook and two miles East of Marietta, on intersection Marietta-Columbia Pike. Bus service - Near School

H. H. Siegrist
 7-7-41 Columbia Rt. Pa.

Quality Meats

ALSO A FULL LINE OF Fruits & Vegetables

KRALL'S Meat Market
 West Main St., Mt. Joy

C. M. WEBB & SON

122 South Barbara Street MOUNT JOY, PA.
 ROOFING - SPOUTING SHEET METAL WORK ROOF PAINTING
 PHONES: Mt. Joy 3-4981 E'town 9287

Dr. H.C. Killheffer

Optometrist
 MANHEIM 163 S. Charlotte St. Telephone 137-R
 Mon. & Wednes. 9-5:30 Tues. Fri. Sat. 7-9 P. M.

HOW ARE YOUR SHOES?

DON'T WAIT TOO LONG BRING THEM IN.
City Shoe Repairing Co.
 39 SOUTH QUEEN STREET LANCASTER, PENNA.

"Fleas Don't Bother Me I'm Dusted with PULVEX DDT"



PULVEX FLEA POWDER KILLS FLEAS KEEPS 'EM OFF

CAT OWNERS: To rid your cat of fleas and lice, be sure to use PULVEX ROTENONE Flea Powder. Specially formulated for cats.

REPORT OF CONDITION OF THE UNION NATIONAL MOUNT JOY TRUST COMPANY OF MT. JOY IN THE STATE OF PENNSYLVANIA AT THE CLOSE OF BUSINESS ON JUNE 30, 1949.

ASSETS	
Cash, balances with other banks, including reserve balance and cash items in process of collection	\$ 917,838.08
U. S. Government obligations direct and guaranteed	2,617,130.03
Other bonds, notes and debentures	157,366.30
Corporate stocks, including Reserve Bank	14,250.00
Loans and discounts (including \$29.41 overdrafts)	1,705,660.50
Bank premises owned	22,775.00
Real estate owned other than bank premises	44,931.90
Other assets	1,169.11
Total Assets	\$5,458,207.92

LIABILITIES	
Demand deposits of individuals, partnerships, & corporations	2,339,861.30
Time deposits of individuals, partnerships, and corporations	2,408,062.29
Deposits of U. S. Government (including postal savings)	54,656.72
Deposits of States and political subdivisions	61,809.83
Other deposits (certified and cashier's checks, etc.)	7,618.87
Total Deposits	\$8,714,988.81
Other Liabilities	1,458.16
Total Liabilities	\$4,873,467.97

CAPITAL ACCOUNTS	
Common stock, total par	\$125,000.00
Surplus	375,000.00
Undivided profits	97,291.91
Reserves	17,497.21
Total Capital Accounts	584,789.12
Total Liabilities and Capital Accounts	\$5,458,207.92

MEMORANDUM
 Assets pledged or assigned to secure liabilities and for other purposes: \$50,073.00
 State of Pennsylvania, County of Lancaster, ss: I, Carl S. Krall, cashier of the above-named bank, do solemnly affirm that the above statement is true to the best of my knowledge and belief.
 ANNIE C. BENSINGER, Notary Public
 My commission expires Jan. 26, 1953
 Correct—Attest:
 MARTIN D. MUSSER
 CLAUDE H. GROSH
 JOHN E. NISSLEY
 Directors

REPORT OF CONDITION OF THE FIRST NATIONAL BANK AND TRUST COMPANY OF MT. JOY IN THE STATE OF PENNSYLVANIA AT THE CLOSE OF BUSINESS ON JUNE 30, 1949.

ASSETS	
Cash, balances with other banks, including reserve balance and cash items in process of collection	\$ 638,310.34
U. S. Government obligations, direct and guaranteed	1,578,810.81
Other bonds, notes, and debentures	36,366.30
Corporate stocks (including Reserve Bank)	9,858.67
Loans and discounts (including \$96.78 overdrafts)	9,750.00
Bank premises owned	1,412,253.09
Real estate owned other than bank premises	35,127.95
Other assets	1,900.00
Total Assets	\$8,739,536.33

LIABILITIES	
Demand deposits of individuals, partnerships, and corporations	1,515,418.3
Time deposits of individuals, partnerships, and corporations	1,514,558.52
Deposits of U. S. Government (including postal savings)	39,211.03
Deposits of States and political subdivisions	226,996.14
Other deposits (certified and cashier's checks, etc.)	10,121.71
Total Deposits	\$4,236,315.24
Other Liabilities	22,904.42
Total Liabilities	\$4,259,219.66

CAPITAL ACCOUNTS	
Common stock, total par	\$125,000.00
Surplus	290,000.00
Undivided Profits	46,376.67
Total Capital Accounts	371,376.67
Total Liabilities and Capital Accounts	\$8,739,536.33

MEMORANDUM
 Assets pledged or assigned to secure liabilities and for other purposes: \$51,137.95
 Loans as shown above are after deduction of reserves of \$7,548.57
 State of Pennsylvania, County of Lancaster, ss: I, E. M. Bomberger, cashier of the above-named bank, do solemnly affirm that the above statement is true to the best of my knowledge and belief.
 E. M. BOMBERGER, Cashier
 Affirmed to and subscribed before me this 7th day of July, 1949.
 Gertrude P. Helms, Notary Public
 Correct—Attest:
 D. M. WOLGEMUTH
 E. W. NEWCOMER
 PARIS H. HOSSTETTER
 Directors

REPORT OF CONDITION OF THE FIRST NATIONAL BANK OF LANDISVILLE IN THE STATE OF PENNSYLVANIA AT THE CLOSE OF BUSINESS ON JUNE 30, 1949.

ASSETS	
Cash, balances with other banks, including reserve balance, and cash items in process of collection	\$ 427,600.95
U. S. Government obligations, direct and guaranteed	1,022,788.34
Other bonds, notes and debentures	22,530.70
Corporate stocks (including Reserve Bank)	261,061.22
Loans and discounts (including \$17.46 overdrafts)	4,800.00
Bank premises owned	739,211.74
Real estate owned other than bank premises	3,646.06
Investments and other assets (including real estate)	7,000.00
Other assets	414.78
Total Assets	2,489,053.79

LIABILITIES	
Demand deposits of individuals, partnerships, and corporations	1,118,681.77
Time deposits of individuals, partnerships and corporations	857,903.69
Deposits of United States Government (including postal savings)	21,600.55
Deposits of States and political subdivisions	187,469.55
Other deposits (certified and cashier's checks, etc.)	29,479.41
Total Deposits	\$2,215,134.97
Bills payable, redemptions, and other liabilities for borrowed money and fixtures	50,000.00
Other Liabilities	3,526.78
Total Liabilities	2,288,661.75

CAPITAL ACCOUNTS	
Common stock, total par	\$500,000.00
Surplus	85,000.00
Undivided profits	48,673.84
Reserves (and retirement account for preferred stock)	11,712.20
Total Capital Accounts	229,386.04
Total Liabilities and Capital Accounts	2,489,053.79

MEMORANDUM
 Assets pledged or assigned to secure liabilities and for other purposes: \$60,000.00
 State of Pennsylvania, County of Lancaster, ss: I, W. Scott Bushong, president of the above-named bank, do solemnly affirm that the above statement is true to the best of my knowledge and belief.
 W. SCOTT BUSHONG, Pres.
 Sworn to and subscribed before me this 6th day of July, 1949
 George A. Shenck, Justice of the Peace, My commission expires Jan. 7, 1952
 Correct—Attest:
 JESSE SNYDER JR.
 Wm. P. HOFFMAN
 EDWARD G. MYERS
 Directors

Acme Super Markets
 Sliced Yellow Cling or Freestone Calif.
PEACHES
 In heavy syrup



8-oz buffet size can

10¢

Luscious slices of Calif. Peaches always ready for desserts, salads, etc.

- MARGARINE Princess Enriched lb 19¢
- CHEESE LOAF Glendale Club 2 lb 73¢
- PINEAPPLE Dole's Crushed 2 cans 31¢
- PORK & BEANS Asco 2 cans 21¢
- ENRICHED MILK Farmdale 4 tall cans 45¢
- CORNER BEEF Wilson's 12-oz can 45¢

A Treat Children Love...
 Ideal Family Quality
APPLE BUTTER
 Rich-Smooth-Spicy 28-oz jar 17¢
 2 jars 33¢



TOMATO JUICE
 46-oz can 19¢ Sunrise Grade A

FRESH FRUITS & VEGETABLES - LOWEST PRICES

Eastern Shore Fresh Full-Podded LIMA BEANS 3 lbs 29¢

GOLDEN SWEET CORN 6 ears 35¢
LARGE GREEN PEPPERS 3 for 10¢

Fancy Slicing Tomatoes ctn 15¢

LARGE CULTIVATED BLU-BERRIES pint 29¢
SANTA ROSA RED PLUMS lb 15¢

William's Early Red Cooking Apples 2 lbs 23¢
 or Eating

Whole Sugared Frosted Liberty Strawberries 16-oz 39¢
Ventura Fordhook Lima Beans pkg 33¢
Pasco Pure Concentrated Orange Juice 2 6-oz cans 49¢

Here's a cool-looking, popular summer cake -
Virginia Lee Fresh Pineapple Iced Layer Cakes ea 59¢
 Regular 35¢ Caramel Ring Coffee Cakes ea 29¢
 Almond Buns pkg 19¢ Apple Coffee Cake 23¢
 Large Sugared Do'Nuts pkg 23¢

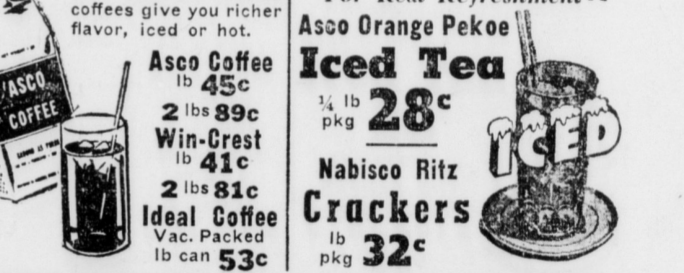
For Value, Taste and Lasting Freshness SUPREM ENRICHED BREAD loaf 14¢

Our "heat-flo" roasted coffees give you richer flavor, iced or hot.

Asco Coffee lb 45¢
 2 lbs 89¢
Win-Crest lb 41¢
 2 lbs 81¢
Ideal Coffee Vac. Packed lb can 53¢

For Real Refreshment -
Asco Orange Pekoe Iced Tea 1/4 lb pkg 28¢

Nabisco Ritz Crackers lb pkg 32¢



ACME MEATS ARE GUARANTEED TO PLEASE YOU

LEAN SMOKED PICNICS lb 43¢

Shoulder Veal Chops	Shoulder Veal Roast	Rib Veal Chops
lb 43¢	lb 39¢	lb 59¢

Local Dressed, Ready-for-the-Pan Frying Chickens lb 53¢

Lean Sliced Bacon lb 49¢
 Skinless Franks lb 45¢
 Lebanon Bologna sliced 33¢
 Ring Bologna lb 49¢

POTATO SALAD OR COLE SLAW lb 29¢

CRAB MEAT Claw, lb 69¢ White, lb 79¢
 Boneless Steak Fish lb 25¢ Fancy Large Shrimp lb 69¢

Ball Bros. Mason Jars pts 69¢ doz 79¢
 Hom-de-Lite Mayonnaise pt jar 33¢

Rob Roy or Bala Club Beverages
 Ginger Ale, Club Soda, Orange, Root Beer, Sarsaparilla or Birch Beer.

FEATURE PACKED Now on Sale 5¢

2 30-oz bots 21¢ + dep & tax

Prices Effective July 11-15-16, 1949. Quantity Rights Reserved.
YOUR DOLLAR BUYS MORE AT THE ACME

Sh...
 Dr. Pure Shee...
 An ir...
 was clos...
 E. K. T...
 purchas...
 estate...
 private...
 The s...
 property...
 ling an...
 fronting...
 extending...
 Henry S...
 The r...
 mediate...
 taking p...
 morning...
 ters, p...
 renovati...
 to movi...
 electrical...
 etc. from...
 and Tru...
 North M...
 location...
 building...
 Inc.
 It is t...
 Inc. to...
 most m...
 Plumbing...
 this sec...
 ideal. T...
 possession...
 15th.
 This p...
 ways b...
 During...
 a shoe...
 vie theu...
 future...
 an electr...
 On Sep...
 An elec...
 On the...
 eight ye...
 Sheetz...
 has con...
 and em...
 location...
 writing...
 for the...
 Over...
 Girls...
 De-t...
 More...
 ty teen...
 Lancaster...
 summer...
 Rangin...
 teen year...
 tassellers...
 2 inches...
 the tass...
 year's gr...
 ploypces...
 Landisvil...
 Co., Mt...
 Not...
 needed...
 cause of...
 has been...
 sels 70...
 leaves o...
 done by...
 Althoug...
 65-Y...
 Scho...
 To B...
 Membe...
 Board of...
 bids for...
 year old...
 for many...
 and Wes...
 Township...
 Although...
 the Mt...
 all three...
 school...
 cording...
 president...
 Later...
 ported...
 Maytown...
 over sup...
 Lately...
 able to...
 in the p...
 Bids w...
 ing of...
 Monday...
 mer Sch...
 MARRIA...
 John H...
 and Ger...
 er Lanca...
 Herbert...
 and Dor...
 The C...
 Club met...
 Everett...
 July 13...
 chesen...
 4-H Club