

Florin E. U. B. Church Had Prosperous Year

Recently the Gressbrenner Evangelical United Brethren Church at Florin, closed another year of activity.

At the annual congregational meeting the present state of affairs were clearly revealed. During the Church year, fifty new members were received into the Church; six

were lost, making a gain of forty-four. The present membership stands at 215. The average attendance of the Sunday morning worship service is 152; and at the evening service 88. The mid-week service is attended by an average of 30 people. The Sunday School showed a definite gain for the last year '46-'47 the average attendance was 170. This year '47-'48 attendance averaged 213.

In the matter of finances the Church had the best year on re-

ord. \$1,887 was given to various missionary causes. \$3,474 was placed in the building fund. An overall income of \$12,849 was recorded. This means an average of \$60 per member.

The Church is looking forward to the time when a new Church building will be erected. An official five to eight year waiting period was adopted concerning the matter. This means that during the next five to eight years the church will be working financially

to interest more friends and accumulate more funds to the end that one may see the new church erected during that time.

The roster of Church officials for the coming year is as follows: Lay delegate to annual conference, John K. Wittle; alternate delegate Arthur A. Braun; class leader, Clarence S. Nissley; Assistant class leader, Park Shetter; Stewards are Raymond Forwood, Norman Will, John Eichler, Marlin Gish, Mrs. Earl Royer and Aaron Buckwalter; financial secretary, B. F. Kauffman; Church treasurer, C. S. Nissley; Benevolence treasurer, Park Shetter; Trustees, Clarence S.

Nissley; Augustus Shetter, John K. Wittle and B. F. Kauffman.

Church pianist Mrs. Norman Will; secretary of Council of Administration, Clarence E. Musselman; treasurer of Building fund, Arthur A. Braun; Sunday School Superintendent, Clarence E. Musselman; Assistant Supt., Raymond Forwood; secretary, Mrs. E. Elmer Wittle, assistant secretary, Norman Will; treasurer, John K. Wittle; pianist, Dorothy Baker; assistant transportation and financial interests are cradle roll, Mrs. Park Shetter; Kindergarten Mildred Gebhart; Junior, John K. Wittle, more than 5000 years ago in Hinson, Clarence E. Musselman; dutan.

Home Dept., Mrs. Bertha Kraybill; Flower committee: Malinda Myers, Estella Haldeman and Ruth Fisher.

In addition to being noted for its bluegrass region with its fine stock, Kentucky boasts of its tobacco production, which is second largest in the nation. Corn is the state's second largest crop, its oil production is considerable and its manufacturing, transportation and financial interests are large.

The game of chess originated more than 5000 years ago in Hinson, Clarence E. Musselman; dutan.

The Bulletin, Mt. Joy, Pa., Thursday, September 23, 1948—7

Experienced Painters Wanted

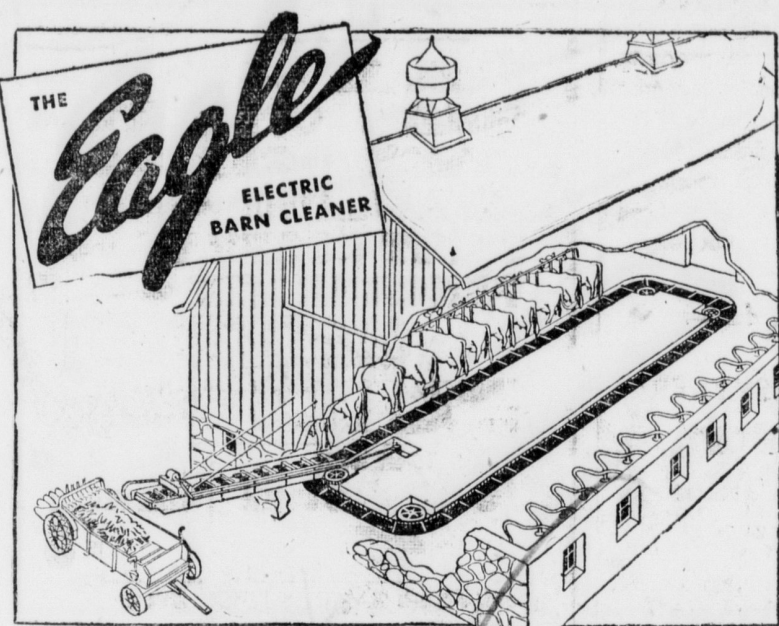
D. LORAW

TELEPHONE
MOUNT JOY 159-J2

FLORIN, PA.
8-26-48

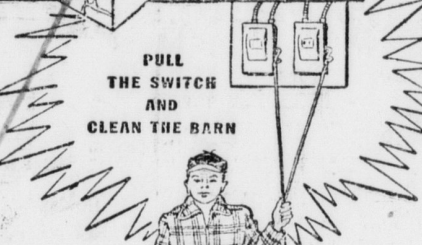
Use Our Classified Column — It Pays

Banish Barn Cleaning Drudgery



Save Up to 3 Hours or More
Every Day with an Eagle
Automatic Electric Barn Cleaner

- ★ Installs in any barn
- ★ So simple—a boy can operate it
- ★ Loads directly on spreader
- ★ Safe, fully enclosed mechanism
- ★ Saves up to 3 hours or more every day
- ★ Time-tested and proved on scores of farms



- ★ All metal, precision built for long, dependable service
- ★ Save time and toil — and have a clean barn at all times

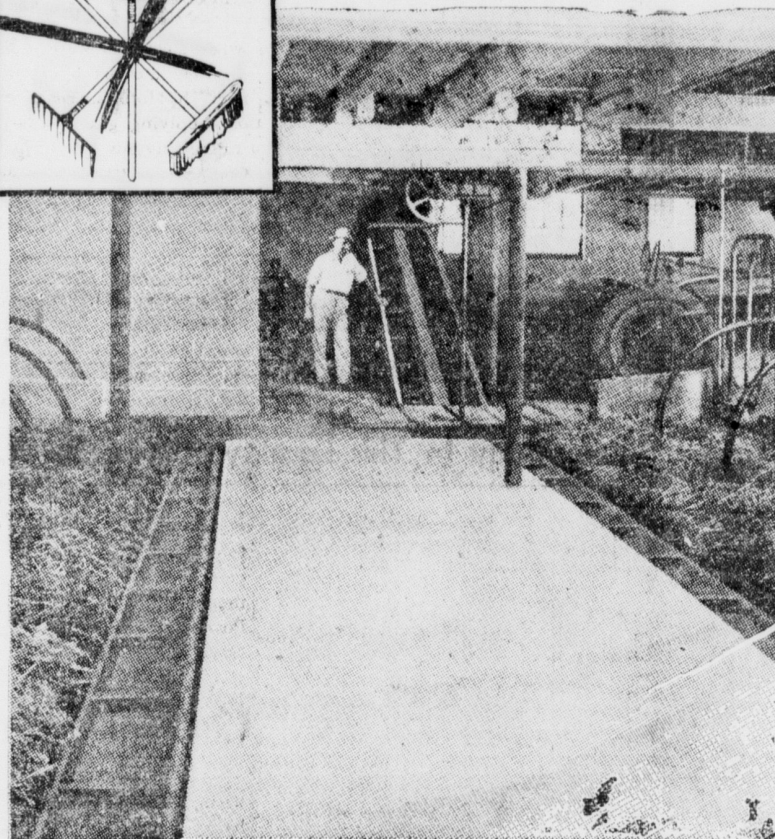
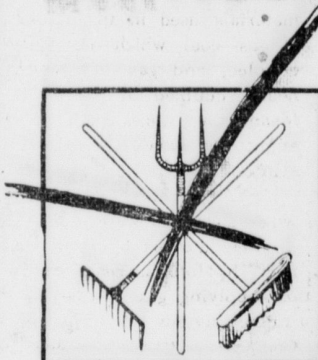
Built by Eagle Mfg. Company, Appleton, Wis.
Sold and Installed by

L. H. Brubaker
Lancaster R4, Lititz, Pa.

LOCAL REPRESENTATIVE
CHARLES R. ENGLE
215 Marietta Street, Mount Joy, Pa.

Call or drop a card — our representative will give you complete information and free estimate without obligating you.

BANISH that Barn Drudgery with an ELECTRIC BARN CLEANER



You have no tougher farm job than cleaning your barn. It's dirty! It's time-taking. It's tiresome. And to have a respectable-looking barn it must be done at least once a day each day of the year . . . Sundays, holidays and every day!

How would you like to get that big dirty job done in less than twelve minutes? without dirt? without work? by pushing a button?

You can . . . with an electric barn cleaner. And you can have one in an old barn as well as a new one. What convenience! Just push a button. Click! Your electric hired hand, Reddy Kilowatt, starts the cleaner. Then the cleaner paddles, riding the bottom of the barn gutter, carry the manure right to your spreader or your pit. No pitchforks. No brooms. No labor. No dirt. In less than twelve minutes your barn is thoroughly cleaned. It is simple, safe and money-saving.

Ask our farm representative and your local equipment dealer for information on electric barn cleaning equipment for your farm. Act today! Turn old-fashioned cleaning hours into profitable farm work right away!

PENNSYLVANIA
POWER & LIGHT COMPANY

BE MODERN — GO ELECTRIC ALL THE WAY



Help Wanted

MEN & WOMEN

If you want steady employment—with
satisfactory working conditions—

SEE MR. H. S. STARK

BACHMAN CHOCOLATE MFG. COMPANY
MOUNT JOY, PENNSYLVANIA