

**ASPHALT PAVING**  
**DRIVEWAYS - PARKING AREAS - LANES**  
**CRUSHED STONE**  
**ESTIMATES CHEERFULLY GIVEN**  
**THOMAS BOYD**  
 36 WEST MAIN STREET — MOUNT JOY TELEPHONE 43-W  
 5-27-3m

**Remodel Your Bathroom Now!**



Get rid of the old style fixtures and start to enjoy a completely modern bath. New design. Easy to clean. Beautiful.  
 Payments To Suit You. Take Months To Pay. First Payment Due November First

**PLUMBING — HEATING — OIL BURNERS**  
**R. L. BREAKIRON**  
 333 Marietta Avenue Mount Joy  
 PHONE DAY — MOUNT JOY 215-J

**NOW Is The Time To ORDER---**

**BALER TWINE --- \$10.30 Per Bale**  
 (Mfg. by International Harvester Co.)

**BINDER TWINE --- \$9.75 Per Bale**

**BALE TIES --- \$3.95 Per Bundle**  
 (10'-14 Gauge - 250 per bdl.)

**LANC. CO. FARM BUREAU CO-OP. ASS'N.**

Lancaster New Holland  
 Manheim Quarryville



**M & R TASTE THRILLS OPENS STAND AT FARMERS MARKET**

Do you yearn for the kind of pies and cakes mother used to make? Or wish you could buy tasty home-made baked beans, mayonnaise and potato salad? Well, yearn no longer, for starting Friday, June 18 a new stand will open on the Farmers' Market, at which you can buy all these delectable food stuffs and more.

There will be layer cakes and loaf cakes, cup cakes and cookies, baked beans and potato salad, as well as, mayonnaise and spaghetti sauce, and they're all made by two local ladies noted for their ability in the cuisine.

These luscious morsels to tempt your palate will be sold by Mrs. Martha S. Ehlman and Mrs. Ruth Strickler under the name of M & R Taste Thrills, each Friday at the local Farmers Market.

**HOW ARE YOUR SHOES? DON'T WAIT TOO LONG BRING THEM IN.**

**City Shoe Repairing Co.**  
 30 SOUTH QUEEN STREET  
 LANCASTER, PENNA.

**Sharp Saws**  
 Have your saws filed and adjusted by machine. Magnetically precise filing. Saw set after, cleaner, faster. Quicker service—you'll like our work—  
**CHARLES ABEL**  
 Milton Grove, Pa.  
 Ph. Mt. Joy 129R12

**J. F. HUMMER**  
 Slate, Tile and Asbestos Roofing  
 Copper, Sheet Iron, Tin Spouting,  
 Hot Air Heating, Ventilating,  
 Suction Pumps, etc.  
 Office: 34 Detwiler Ave. Mt. Joy  
 Phone 209-R 7-17-4f

**Cabin Sites**  
 ALONG CHICKIES CREEK  
**\$300 each**

**Wm. T. Kline**  
 MOUNTVILLE, PA. Phone 9241  
 9 a.m. to 9 p.m. Daily 4-8-4f

**ATHLETES FOOT ITCH NOT HARD TO KILL. IN ONE HOUR.**

If not pleased, your feet back at any drug store. TE-OL, a STRONG fungicide, contains 90% alcohol. IT PENETRATES. Reaches MORE spots to KILL the Itch. Today.  
**SLOAN'S PHARMACY**

**Church Notes**

**NEWS PERTAINING TO ALL THE CHURCHES IN MT. JOY AND THE ENTIRE SURROUNDING COMMUNITY.**

**Mount Joy Methodist**  
 Mount Joy, Pa.  
 Rev. James F. Mort, Pastor  
 Joseph Shaeffer, Supt.  
 Sunday, June 13  
 9:00 a.m. Worship Service  
 10:00 a.m. Church School  
 The Board of Education will meet following Church School.

**Salunga Methodist**  
 Rev. James F. Mort, Pastor  
 Miss Alice Strickler, Supt.  
 Sunday, June 13  
 10:00 a.m. Church School  
 11:00 a.m. Worship Service.

**Kraybill's Mennonite Church**  
 East Donegal Twp.  
 Sunday, June 13.  
 9:00 a.m. Sunday School  
 10:00 a.m. Morning Worship

**Mt. Joy Mennonite Church**  
 Sunday, June 13.  
 8:30 a.m. Sunday School  
 Friday  
 8:00 p.m. Prayer meeting.  
 Everyone welcome to these services.

**St. Mark's**  
 Evangelical United Brethren  
 Ezra H. Rauck, Pastor  
 Sunday, June 13.  
 9:00 a.m. Sunday School  
 9:30 a.m. Children's Day Program  
 Wednesday  
 7:30 p.m., Midweek Prayer Service.

**Doreas Society** Outing, afternoon and evening.

**First Presbyterian Church**  
 Rev. T. A. McGregor, Pastor  
 Sunday, June 13  
 10:45 a.m. Children's Day Program  
 6:30 p.m. Young People  
 7:30 p.m. Evening Worship  
 "Knocking at Heaven's Door"  
 Wednesday  
 7:30 p.m. Prayer Meeting

**Donegal Presbyterian Church**  
 Rev. T. A. McGregor, Pastor  
 Sunday, June 13  
 9:30 a.m. Church School  
 Thursday, June 17.  
 11:00 a.m. Donegal Reunion.

**LETTERS GRANTED**  
 Russell G. Heisey, West Donegal and Ezra D. Heisey, Manor twp., administrator of John M. Heisey.

**Church Of God**  
 Rev. C. F. Helwig, Pastor  
 Sunday, June 13  
 9:30 a.m. Children's Day Service  
 10:30 a.m. Child-Dedication Service. Sermon: "Take and Train This Child for Me."  
 7:30 p.m. Evening Worship  
 Sermon: "Some Crowns That Are Given".  
 Wednesday  
 6:45 p.m. Jr. Choir Practice.  
 8:30 p.m. Senior Choir Practice.  
 7:30 p.m. Monthly Missionary Meeting.

**Trinity Evangelical Cong. Church**  
 L. Dallas Ziegler, Pastor  
 Sunday, June 13  
 9:30 a.m. Children's Day will be observed in the Sunday School. This will be a combined service  
 6:30 p.m. K.L.C.E.  
 7:00 p.m. Prayer Period.  
 7:30 p.m. Service in charge of the children of the church.  
 Monday  
 7:00 p.m. Sunday School Board will meet.  
 Tuesday  
 7:45 p.m. Young Peoples.  
 Wednesday  
 6:45 p.m. Junior Choir Practice  
 7:30 p.m. Prayer Meeting  
 8:30 p.m. Senior Choir.

**Trinity Lutheran Church**  
 Rev. W. L. Koder, Pastor  
 Sunday, June 13  
 9:30 a.m. Sunday School.  
 10:45 a.m. Morning Worship.  
 Monday  
 7:30 p.m. Ladies Bible Class at the Parish House.  
 Tuesday  
 7:45 p.m. Women's Missionary Society meeting at the home of Mrs. Gilbert Hoffman, West Donegal St.  
 Mrs. Wm. R. Heilig is the leader.  
 Wednesday  
 7:30 p.m. Young Ladies Bible Class at the Parish House.  
 Thursday  
 7:00 p.m. Luther League at the Parish House.

**Newtown**  
 Evangelical U. B. Church  
 Oscar K. Buch, Pastor  
 Sunday, June 13  
 9:00 a.m. Sunday School  
 Thursday  
 7:30 p.m., Prayer Meeting and C. E.

**EVANGELISTIC TENT MEETING BEGIN CHILDRENS SCHOOL**

The initial service of The Christ for Mt. Joy Evangelistic services held in the gospel tent on Sunday evening was well attended.

A fine musical program was presented by Mac Arthur and Wendel the musical team in charge of the program for the campaign.

Special musical features will be presented on the following nights: Thursday, Ezra Wolgemuth soloist; special music to be announced; Saturday and Sunday nights, Instrumental Music by the party; Monday, Mr. and Mrs. Herman Smith of York; Tuesday: Richard Kendig of Lancaster; Wednesday: The Miller Trio of Florin Thursday: Ruth Gainer, soloist and a Ladies Trio of Mt. Joy U. B. Church.

Services each week day night at 7:30 pm; Sunday at 8:30 pm.

Beginning Monday morning at 10:00 am the childrens meetings will be held at the tent under the capable direction of Mrs. Joseph F. Orr, better known to the children as Aunt Ruth of Philadelphia who is associated with the Bible Club movement. Other competent childrens workers will assist her at the meetings.

The parents are urged to encourage the children to attend as they will enjoy the meeting which will be a lasting benefit to them.

**Gov. Duff Will Speak**  
 (From Page 1)

where Revolutionary patriots pledged their loyalty in 1777, and the famous grove of White Oak trees, praised by botanists as the finest in the state adjoining the churchyard.

The memorial trees are contributed by six members of the society and will be dedicated by the Rev. Thomas A. McGregor, pastor of Mt. Joy and Donegal Churches.

The Memorials will be dedicated as tributes to:

Martha Bladen Clark, founder of Donegal Society, presided by Mrs. Alexander Rodgers; W. Sanderson Detwiler, late past president of the society, presented by Mrs. Detwiler; Donald Cameron Hale and Franz Colleder Mansfield, presented by their aunt, Miss Mary Cameron; Jane Cameron Redecker and Samuel Redecker Slaymaker, presented by Mrs. Slaymaker.

The reunion will open at 11 a.m., with the Rev. Dr. Henry B. Strock, pastor of the First Presbyterian Church, presiding. The Rev. Dr. Wilson will speak and the Rev. Mr. McGregor will conduct the devotions.

The ladies of Donegal will serve luncheon at the tables under the trees in the churchyard, followed by the memorial dedication at 2 p.m.

Following the Governor's address the motet choir of Market Square Church will sing.

**REVIVAL AT ROWENNA**

A series of old-fashioned revival meetings are being held in the Rowenna Church of God continuing until June 13.

The services are held under the supervision of the Rev. Paul S. Kibler, Lancaster RD; and the Rev. J. S. Spangler, Central Manor, pastors of the Rowenna Congregation. Earl Buckwalter, Marietta, will direct the music with special features each evening.

**ATTENDS PASTORS SCHOOL**

The Rev. James F. Mort, pastor Mount Joy and Salunga Methodist Churches will attend the Tenth Annual Conference for Town and Country Pastors at State College, Pa., June 14 to 18. The Rev. Mr. Mort will represent the Town and Rural Fellowship of the Philadelphia Conference, Methodist Church.

One person was killed and a number injured when a public swimming pool at Harrisburg was charged with electricity.

**Mt. Pleasant**  
 Brethren in Christ Church  
 Eld. C. H. Moyer, Pastor  
 Sunday, June 13  
 10:30 a.m. Morning Worship  
 Thursday  
 7:30 p.m. Cottage Prayer meeting at Elmer Whites' home.

**The Calvary Bible Church**  
 Rev. C. I. Summy, Pastor  
 Sunday, June 13  
 9:30 a.m. Bible School  
 Mr. E. M. Wolgemuth, Supt.  
 10:30 a.m. Morning Worship  
 Evangelist Edmond Dinant, speaker.  
 7:00 p.m. Prayer Period.  
 7:30 p.m. The Service.  
 Brief Service of Devotional Nature, to permit attendance at Community Tent Meeting.  
 Tuesday  
 2:30 p.m. Prayer Meeting for Revival—in charge of Mrs. Earl Myers.

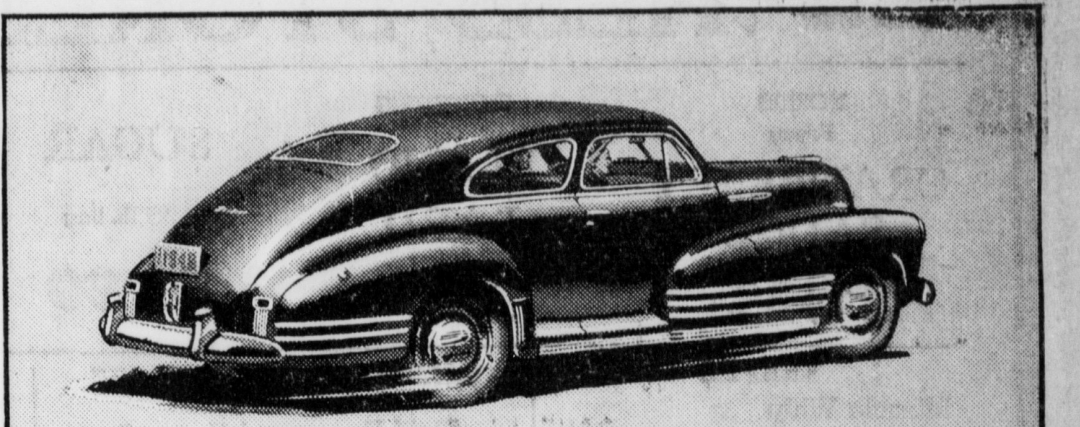
Stimulate your business by advertising in the Bulletin.

**THE LUPOLDS TO DEDICATE BIBLE CHURCH IN OKLAHOMA**

Rev. Ray Lupold, pastor of the Bible Church at Gans, Okla., will hold dedication services on Sunday, June 20. An excellent program has been arranged and includes C. I. Summy, of Mount Joy, who will speak at 11:00 a.m. Mr. Summy will also deliver the dedication message at 3:30 p.m. and a special message at the evening service.

The Lupold family formerly lived here and invite their friends to worship with them on the above occasion.

Due to the death of the secretary, the York Horse Show scheduled for June 11 and 12, has been canceled. The Harrisburg pike from the Swatara creek west for one mile will be repaved and widened to 38 to 44 feet.



**First in quality and LOWEST-PRICED LINE in its field!**

Today, when real value means most to every American family, Chevrolet continues to offer the lowest-priced line of passenger cars in its field as well as the only line of cars giving BIG-CAR QUALITY AT LOWEST COST! Yes, Chevrolet gives more value, any way you look at it!

any way you figure it. That's why more people buy Chevrolets—and more people drive Chevrolets—than any other make of car. That's why we believe you, too, will agree that CHEVROLET AND ONLY CHEVROLET IS FIRST in dollar value as it's first in registrations.

**CHEVROLET**  
 -and ONLY IS FIRST!  
 Chevrolet-

**SPECIAL EXTRA-LOW PRESSURE TIRES\***—on Wide-Rim 15-Inch Wheels (24-lb. pressure only all around). Chevrolet offers you the line of tires for easy, restful riding. Remarkable new extra-low pressure tires that give a much safer, more comfortable ride; absorb road shocks instead of transmitting them to you and your car.  
 \*Optional at small extra cost.

**H. S. NEWCOMER & SON, Inc.**  
 Mount Joy, Pennsylvania

**STAUFFER'S QUARRIES**  
 L. J. SMITH, Owner  
 TELEPHONE 308

**CONCRETE BLOCKS**

Crushed Stone Chimney Blocks  
 Mortar Cement Flue Lining  
 Concreting, Mason & White Sand Steel and Aluminum Sash  
 Lintels Overhead Garage Doors

4" - 6" - 8" - 10"

**FIRE PLACE UNITS and ACCESSORIES**

Custom Drilling & Jack Hammer Work — Estimates Cheerfully Given

**PAVE and SAVE**  
 with Guaranteed **COLAS**

**CARL B. DROHAN**  
 MOUNT JOY, PENNA.

THE MODERN WAY TO SURFACE ROADS..ECONOMICAL..ENDURING AND SO SMOOTH!

Also—Ideal for Driveways, Parking Areas, Farm Lanes, etc. at low cost maintenance!

**INSURANCE PLAN...**



**KELLY Springfield TIRES**

**...for Holiday Driving**

Insure yourself against holiday driving worries with tougher, safer, longer-lasting Kellys.

- Armorubber tread — so tough it outwears steel
- Extra-cushioning — more rubber between plies
- New design — keeps rubber relaxed
- Extra-insulated plies — for trouble-free driving

Only **\$12.65** plus tax

**SPECIAL!** Kelly's air core inner tires can save your life in a blowout. For even after the outer tire has been punctured, you can still drive to a safe, slow, straightline stop on life-saving inner tubes.

**New KELLY Air Core Safety Inner Tubes...**

**GEO. W. LEAMAN**  
 208 E. Main St. Mount Joy, Pa.

**TOP TRADE-IN VALUES—EASY TIME PAYMENTS!**