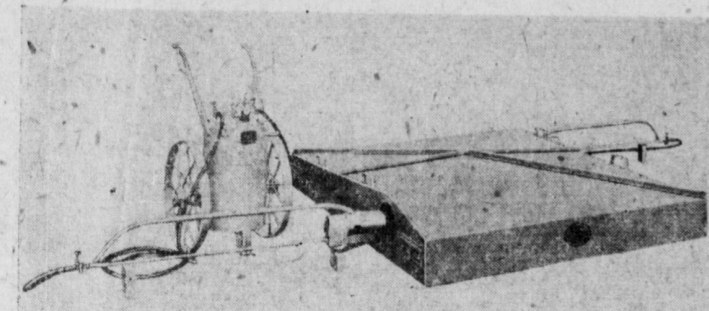


Hauck Sterilizing Equipment

FOR
Sterilizing Tobacco Seed Beds
WITH DETACHABLE BURNERS



Sterilize the soil 5 inches deep in 6 minutes time, with 2000° F. Flame Temperature in a 6'x8'x14" Alloy Steel hood, and one Hercules Double burner with a 15 gal. tank on wheels, 4 Gallon of Kerosene per hour for sterilizing is required. Two powerful Hauck flame burners compress the heat into the hood onto baffles, the heat is passed from the baffles and compressed into the soil, not allowing the flames to touch the soil at any point. Sterilizing is done by heat only, without harming the soil.

The Hauck Sterilizing hood weighs 160 pounds, with two very large burners and two 25 ft. sections of oil resisting hose. The life of the Hauck Sterilizing hoods are 20 years, providing they are stored at a dry place the time not in use.

The Hauck detachable burners are not only used for sterilizing, but are used for dozens of other jobs on the farm. The Hauck flame guns have become the most popular method for destroying weeds, etc.

For over 60 years Hauck Mfg. Co. has been manufacturing over 100 high quality products. In 1946 the company was informed of the great demand for a more dependable method for sterilizing tobacco seed beds. With local farmers ideas, they went to work, and after very costly experiments they have developed one of the most practical sterilizing hoods ever brought to the tobacco farmer. All Hauck products are guaranteed to do satisfactory work.

Attention Mr. Tobacco Farmer: There is no longer any reason for tobacco seed beds not being planted at the proper time. When the soil is in shape you go to work, no waiting for steamers. There have been healthier and heartier tobacco plants raised under this method than any other known.

Why not order your sterilizing equipment today so we can deliver the equipment in plenty of time? All orders are being filled in 30 days. The Hauck Mfg. Co. has taken all the risks, so the tobacco farmers can have a sure sterilizing method and do the job at the proper time, Mr. Tobacco Farmer you have nothing to lose.

PRICE, \$309.00 DELIVERED

Large numbers of orders have been already placed in many tobacco states

Manufactured By
HAUCK MANUFACTURING COMPANY
124-136 Tenth Street Brooklyn 15, N. Y.
Lancaster County Distributor
MARTIN G. MUSSER
23 Elizabeth Street, Maytown, Pa. Phone Marietta 3353

PUBLIC SALE OF Valuable Real Estate FRIDAY, FEBRUARY 6th, 1948 7 P. M.

Two and one-half (2 1/2) STORY FRAME DOUBLE DWELLING with slate roof situated in the village of Bellaire, on road leading from Elizabethtown to Lebanon in Mount Joy Township, Lancaster County, one side has seven (7) rooms, the other side has four (4) large rooms, ONE CAR GARAGE Running water on both sides. Bath on one side, oil burner, electric pump for water, concrete cellar under whole house.

House is modeled to take care of two families.

Tract of land totals three-fourth acres, large garden with strawberries, cherry, English walnut, black walnut, large shade trees.

Sale will be held at the office of D. L. Lunds, at 23 South Market Street, Elizabethtown, Pennsylvania on above date when terms will be made known by

ADAM B. STEAGER and HELEN STEAGER, husband and wife, Auctioneer

Walter Dupes, Clerk
D. L. Lunds, Clerk
Alfred C. Alsphack, Atty 1-22-23

PUBLIC SALE NOTICE SATURDAY, FEBRUARY 7, 1948

Pursuant to the power contained in the last Will and Testament of Aaron L. Hoffman, deceased, the undersigned will offer at public sale

ALL THAT CERTAIN tract of land with

FRAME DWELLING two story brick and chicken houses, capable of housing several hundred chickens, thereon erected, situated along the Binbridge Road, one-half mile west of Maytown in East Penn Township Lancaster County, Pennsylvania.

The premises has a well of good water on it and the dwelling has hot air heat, electricity and bath.

The premises may be inspected at any time upon application to the undersigned at the Maytown National Bank.

Possession of the premises can be delivered on April 1, 1948.

Sale will be held on the premises on Saturday, February 7, 1948, at 2:00 o'clock P. M. when the terms and conditions will be made known by the undersigned.

T. E. HOFFMAN Trustee under the Will and Testament of Aaron L. Hoffman, deceased

Walter Dupes, Auctioneer
Paul A. Moulton, Atty. 1-22-23

WATER PIPES THAWED ELECTRICALLY COOPER'S GARAGE

3500 N. PA. PHOENIX LANSVILLE 3651 or 3321 1-29-48

THE VALUE PARADE IN OUR AD COLUMNS WILL LEAD YOU TO SAVINGS

Everybody reads newspapers but NOT everybody reads circular advertising left on their door step.

Everybody reads newspapers but NOT everybody reads circular advertising left on their door step.

Everybody reads newspapers but NOT everybody reads circular advertising left on their door step.

Everybody reads newspapers but NOT everybody reads circular advertising left on their door step.

Farm Topics

Egg Production Can Be Increased by Lights

Less Feed, More Eggs By Longer Working Days

The swing shift still is on the job in modern chicken houses. No longer do farmers expect a drop in egg production during the fall and winter. They've learned how to prevent this downward curve.

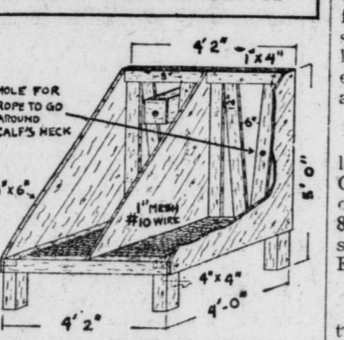
The answer lies in providing laying hens with 13 hours of light in every 24-hour period, plenty of good feed and an adequate supply of water. Chickens having these "good laying" helps will produce from 10 to 30 per cent more eggs during



fall and winter months than those not similarly cared for. Because natural light usually is not available for specified periods during these months, poultrymen find they must resort to the use of artificial light.

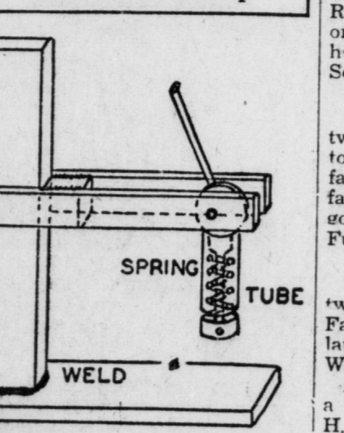
Most poultrymen start using lights in October and continue until late in March or early April. In general, three lighting practices are as follows: Morning lights, evening lights or all-night lights. For morning and evening light, one 50 watt lamp used in a reflector, 16 inches in diameter and 4 inches deep, is required for each 200 square feet of floor space. If all-night lights are used, one 10 to 15 watt lamp is needed for the same amount of floor space. Lights should be located 6 feet above the floor and placed so that roosts, waterers and feed troughs are well illuminated. Electric time switches are available for dimming and turning lights on and off at required periods.

Platforms for Calves



For this elevated platform for calves, developed by University of Vermont, finished lumber or rough lumber may be used. The bottle box shown is made for a two-quart milk bottle, five inches in diameter, but the box may be adapted to fit other size bottles. The hole for the nipple is off center, because the box is higher than it is wide. Two cleats on each side of the box are placed at the angle to permit drainage of the bottle.

Australian Clamp



Because of its quick action, the Australian clamp has several advantages over the screw type. One advantage is that the job does not move when the clamp is put into action; another is that it eliminates worry about splashing metal on threads.

Stockmen Are Warned Of Parasite Problem

A warning against the growing number of internal parasites affecting sheep and cattle has been issued by disease prevention specialists. Most destructive of the internal parasites of cattle include flukes, tapeworms, bladderworms, stomach roundworms, hairworms and whipworms. Wherever they exist, there is a continued risk that favorable conditions for them will result in a serious outbreak.

Everybody reads newspapers but NOT everybody reads circular advertising left on their door step.

Sale Register

If you want a notice on your sale inserted in this register weekly from now until day of sale. ABSOLUTELY FREE, send or phone us your sale date and when you are ready to let us print your bills. That's the cheapest advertising you can get

Saturday, Jan. 31—In Manor twp., 1 and 1 1/2 miles south of the Lincoln Highway at Donerwille farm of 68 acres with 14-room brick house, large bank barn, tobacco shed by Barbara N. H. Nissley Heirs. Edgar Funk, auct.

Saturday, January 24—At Beverly Twin Market, 2 miles North of Elizabethtown, on the old Hershey road, all day public sale of 75 tractors, cars, trucks, and farm implements, cows, hogs, etc., by G. K. Wagner.

Wednesday, January 28—On the premises 4 miles east of Elizabethtown along road leading from Chiques Church to Milton Grove, a farm of 33 acres, good sandy soil, frame bank barn, tobacco shed, 2-story poultry house with garage by Irvin O. Hynicker. Walter Dupes, Auct. Sale at 2 p.m.

Tuesday, Feb. 3—At the Auction Rooms, 33 N. Duke St., Lancaster, Pa. 1. No. 445 State St., Lancaster, a 2 and 1-2 story brick house and brick garage No. 2. No. 927 Edgewood Ave., Lancaster, a two story brick house, No. 3. No. 932 Edgewood Ave., Lancaster by Anna H. Withers. Edgar Funk, auct.

Friday, February 6—On the premises in the village of Bellaire, on the road leading from Elizabethtown to Lebanon, in Mount Joy Twp., 2 and 1-2 story frame double dwelling, 1-car garage, by Adam B. Steager and Helen Steager, husband and wife. Walter Dupes, Auct. Sale at 7 p.m.

Saturday, February 7—Adjourned sale on the premises in West Hempfield Twp., on the road leading from Solunga to Ironville, public sale of personal property and antiques by First National Bank and Trust Co., Executor of the will of David N. Hostetter, deceased. Sale at 12:00 noon. C. S. Frank, Auct.

Wednesday, February 11—On the premises along the road from Marietta to Lebanon, about 3 miles west of Marietta, complete dispersal of all stock and implements by David E. Shank, Dupes and Hess, auct. Sale at 12 noon.

Wednesday, Feb. 11—In Manor twp., 2 miles south of Letort, a farm of 82 acres with an 8-room stone house, large bank barn, tobacco shed, 2 and 3-car garages, etc. by Joan S. Ford. Edgar Funk, auct.

Saturday, February 14—At Millersville, opposite the Menmette Children's Home, 1 and 1-2 acres of land with 2 and 1-2 story house, 8 rooms, barn, chicken house, hog sty, by Charles K. Zeamer. Edgar Funk, auct.

Wednesday, Feb. 18—In Manor twp., 2 miles south of Letort, 3 horses, 9 sheep, entire lot of farm implements and a lot of household goods by John S. Ford. Edgar Funk, auct.

Saturday, February 21—On the premises, along the road from Marietta to Lebanon, about 3 miles west of Marietta, complete dispersal of all stock and implements by David E. Shank, Dupes and Hess, auct. Sale at 12 noon.

Tuesday, Feb. 24—In East Hempfield twp., a mile northwest of Rohrerstown, Allis Chalmers tractor, lot of farm implements and household goods by Harry N. Sonders. Edgar Funk, auct.

Wednesday, Feb. 25—In Manor twp., on the road from Millersville to Rock Hill, 15 cows, 6 heifers, 4 fat steers, 4 fat hogs, sow, lot of farm implements and household goods by Isaac Weaver. Edgar Funk, auct.

Thursday, Feb. 26—In Manheim twp., opposite the hotel at Oregon, Farmall tractor, 350 bu. ear corn, large lot of farm implements by Wilma Withers.

Also at the same time and place a lot of household goods by Annie H. Withers. Edgar Funk, auct.

Friday, February 27—On the premises on Route 230, from Mt. Joy to Lancaster, about one-half mile east of Mount Joy, livestock and farm implements by S. H. Kaylor, Adinger and Frank, Auct. Sale at 12 noon.

Saturday, Feb. 28—Near Mountville, 2 squares south of the Lincoln Highway, Farmall tractor, 1942 Chevrolet sedan, farm implements and household goods by Warren Johns. Edgar Funk, auct.

Monday, Mar. 1—In Manor twp., on the Charleston Road near Washington Boro, Farmall tractor, large lot of farm implements and household goods by Mrs. Esther M. Longenecker. Edgar Funk, auct.

Tuesday, Mar. 2—In Manor twp., on the road from Millersville to Washington Boro, half mile west of Central Manor church, several good tractors, entire lot of farm machinery, only used few years by John E. Murry. Edgar Funk, auct.

Wednesday, March 3—On the premises, in Mount Joy Twp., one-fourth mile North of Milton Grove on the road from Milton Grove to Risser's Church, 2 horses, 7 cows, 15 hogs, 100 chickens, all the farm implements and some household goods by James M. Berrier, Sanger and Miller, aucts.

Wednesday, Mar. 3—In Manor twp., on the road from Creswell to Central Manor, 2 horses, Farmall tractor, large lot farm implements and household goods by Jacob M. Schock, Edgar Funk, auct.

Thursday, Mar. 4—In Manor twp., 2 and 1-2 miles southwest of Mountville and one mile north of Central Manor, 10 cows, 4 heifers, Central Manor, 10 cows, Farmall tractor, implements and household goods by D. L. Lenox. Edgar Funk, auct.

Saturday, Mar. 6—In Hellam twp., York county, at the west end of Wrightsville, and just off the Lincoln Highway, 2 Angus heifers, 4 bulls, 75 sheep, 3 Dorset rams, two tractors, 2000 bus. corn, baled hay and straw and a complete line of good farm implements by William C. Mitzel. Edgar Funk, auct.

Monday, March 8—At 830 Marietta Ave., Lancaster, Pa., large lot of valuable household goods, restaurant equipment and antiques by Amos H. Shaub, Edgar Funk, auct.

Tuesday, Mar. 9—In Manor twp., on road from Millersville to Washington Boro, half mile west of Central Manor church, 12 fine mules, 40 cows, 2 bulls, 7 brood sows, lot household goods by John E. Murry. Edgar Funk, auct.

Wednesday, Mar. 10—In Manor twp., on the road from Millersville to Safe Harbor, midway between the two places, 30 cows, John Deere tractor, lot of farm implements, and household goods by Walter E. Herr. Edgar Funk, auct.

Thursday, March 11—On the premises in East Hempfield township, on the road leading from the Harrisburg pike Centerville, midway between the two places, entire lot of live stock and farming implements by Alvin E. Greider. C. S. Frank, auct.

Thursday, Mar. 11—In Manor twp., on the road from Millersville to Rock Hill, midway between the two places, 2 horses, sheep and lamb's, Farmall tractor, and a large lot of farm implements by Warren B. Boyer. Edgar Funk, auct.

Friday, March 12—On the premises at 830 Marietta Ave., Lancaster, Pa., entire lot of household goods, antique furniture, etc., by Amos H. Shaub, Edgar Funk, auct.

Saturday, Mar. 13—In Manheim twp., opposite the hotel at Oregon, bed room and living room suites, and a large lot of other household goods by Wilma Withers. Edgar Funk, auct.

Saturday, March 13—On the premises in Mount Joy Twp. 3 1/2 acres of Elizabethtown on the Elizabethtown to Manheim road, Farming implements, stock, and household goods by Lloyd S. Hummer, John J. Miller, Auct.

Monday, Mar. 15—In Manor twp., on the road from Millersville to Letort, 1-2 mile east of the latter place, 1-2 cows, John Deere tractor, and a large lot of implements by John E. Keener. Edgar Funk, auct.

Tuesday, Mar. 16—In Manor twp., on road from Amert's Gas Station to Central Manor, midway between the two places, two tractors, with a lot of equipment for both, large lot of farm implements and lot household goods by Russell A. Enterline. Edgar Funk, auct.

Wednesday, Mar. 17—In Manor twp., a mile south of Central Manor and 3 miles west of Millersville, 13 fat steers, ear corn, baled hay and straw, lumber, lot of implements by Walter C. Hoak. Edgar Funk, auct.

Thursday, Mar. 18—In Manor twp., 2 miles southwest of Mountville and one mile northwest of Central Manor, Allis Chalmers tractor, 3,200 tobacco lath, lot of implements and some household goods by John E. Goehneur. Edgar Funk, auct.

Saturday, Mar. 20—In Manor twp., 1 mile south of Lincoln Highway and two miles east of Mountville, on the Blue Rock road, a complete line of household goods, some antiques, 10,000 tobacco lath, and some implements by Lizzie H. Nissley, Executor. C. M. Nissley Estate. Edgar Funk, auct.

Saturday, March 27—In the East end of Mountville Boro, on the Main street, a full line of household goods and a 1929 Ford truck by Katie Hershey, Edgar Funk, Auct.

GOOD INVESTMENT

Not much equipment or space is needed to organize a useful farm repair center. A few hours time spent in sharpening and getting tools in shape, and cleaning out waste material are a good investment, declares C. Howard Bingham, extension agricultural engineer of the Pennsylvania State College.

Everybody reads newspapers but NOT everybody reads circular advertising left on their door step.

Patronize Bulletin advertisers.

Farm Topics

Cube Turkey Steaks To Aid Consumption

Process Boosts Market For Large Type Fowl

Turkey raisers want to produce the larger holiday bird—the public wants the smaller fowl. The cost for a large tom is too much for the average family. To produce a small turkey the cost per pound of gain is far greater than in the case of the larger fowl.

Desiring to create a year around consumer demand for turkeys, the National Turkey Federation and the Poultry and Egg National board de-



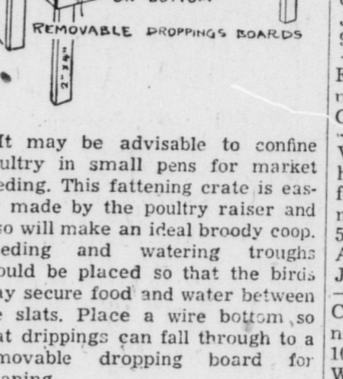
Making turkey steaks with cube machine.

cided to utilize the machine which for years has been turning out the beef cubed steak.

The meat is removed from the turkey and sent through the machine and out comes a four or six ounce steak, ready for the stove or then the lunch box or the formal dinner.

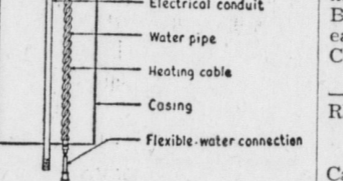
Consumption of turkeys has been less than five pounds per capita. With development of the turkey steak, the turkey industry is endeavoring to attain a per capita output 10 times higher. The cubed turkey steak can be quick frozen and packaged in the same manner as many other kinds of steaks. This new plan is expected to assure the turkey raiser that there will be no overproduction of turkeys.

Fattening Crate



It may be advisable to confine poultry in small pens for market feeding. This fattening crate is easily made by the poultry raiser and also will make an ideal brooder coop. Feeding and watering troughs should be placed so that the birds may secure food and water between the slats. Place a wire bottom, so that drippings can fall through to a removable dropping board for cleaning.

De-Icer for Livestock



A barnyard drinking cup in an open area where stock have access to it from all sides has been developed recently. The cup rests on a heavy steel cylinder installed in the earth to protect the water supply pipe, electric heating unit for the cup, heating cable for the pipe, and the thermostat switch.—Drawing by Geneva Agricultural Experiment station.

Cannibalism Termed Frequent in Winter

Cannibalism may be starved in the laying house during the winter months due to confinement of birds formerly adjusted to ranges, to lack of proper air, improper housing, floor laying, injured birds left in house, blow-outs and insufficient and improperly constructed nests as well as idleness, crowding and inadequate eating and drinking space. The remedy will lie in removal of the offenders.

Stimulate your business by advertising in the Bulletin.

The Bulletin, Mt. Joy, Pa., Thursday, January 29, 1948—3

SPRAYS REPLACE HOE IN CONTROL OF WEEDS

The man with the hoe may soon be a memory, as indicated by a report on killing weeds by use of chemicals given by Professor Robert D. Sweet, of Cornell University, to the Pennsylvania Vegetable Growers' Association meeting at the State Farm Show.

Treatments consisted of pre-emergence sprays on the direct-seeded crops; radish, beet, and spinach, and post-setting sprays on transplanted crops: tomato, cabbage, and broccoli.

When weeds had already germinated, excellent control was obtained with several petroleum sprays having a boiling range below 650 degrees Fahrenheit. Applications made immediately after planting were quite toxic to the vegetables than were those made just prior to crop emergence.

SOLVE LABOR SHORTAGE

By using built-up litter programs, chutes, and hoists in poultry houses, many Pennsylvania poultrymen are reducing their labor requirements, informs H. H. Kauffman, Penn State extension poultry specialist.

REPAIR FARM MACHINES

Mowers and other farm machines often require new bearings and other parts which farmers can install themselves and save on repairs, say extension agricultural engineers.

CLASSIFIED

Rates for this column are 25c per insertion, if over five lines, 5c per line each insertion, all payable in advance.

FOR SALE: '47 Model Frigidaire, 9 cu. feet; 4 Chrome kitchen chairs, 22 North Barbara Street, Mt. Joy, Pa. 1-29-48

FOR SALE: 1936 Ford Tudor, Can be seen at the Hivner residence, just east of the boro, (Snider's Hill) Mt. Joy R1, John Hivner Estate. 1-29-48

FOR SALE: Kirby Vacuum Cleaner, excellent condition, complete with attachments. Phone Mt. Joy, 81-R. 12-29-48

WANTED: Two painters, Apply D. Loran, Florin, Phone Mount Joy, 150-2. 1-29-48

FOR SALE: Ivanhoe 5-burner coal oil stove with built-on oven. Color: ivory and light green. Mr. John B. White, Florin, Pa. Phone Mt. Joy, 135-R-5. 1-29-48

FOR SALE: Frigidaire Electric Range. Excellent condition, like new. 128 N. Barbara St., Mount Joy, Pa. 1-29-48

FOR SALE: Heatola, Majestic cook stove, both in good condition. Joan Myers, Mount Joy, Telephone #20-R-31. 1-29-48

FOR SALE: Fuelaver Stoker. Apply First National Bank & Trust Co., Mt. Joy. 1-22-48

VALENTINES: Chocolate filled hearts, 1 and 2 lb. size; Valentines for children, grown-ups and sentiments to family members, 10 for 5c to \$1.00 each, at Kulp's News Agency, 39 East Main Street, Mt. Joy. 1-22-48

COLLIERY COAL: Egg, stove and nut, \$5.00; Pea, 13.25; Buckwheat, 10.15; Rice, \$9.00; and Barley \$8.15. Walter Derr, 230 West Main St., Mount Joy, Phone 288-J. 1-15-48

WANTED: Full time clerk—Martins 5 and 10c Store, Mt. Joy. 1-15-48

NOTICE: I will buy all kinds of scrap iron and paper. Also stove wood for sale, locust and oak, in small lots or truck load. Guy D. Spittler, Phone 101-R, Mount Joy. 1-29-48

MAN OR WOMAN, steady income averaging \$45 weekly. Call on customers for famous Watkins Products in Mount Joy. No investment. Business established—immediate earnings. Write J. R. Watkins Company, Dept. C, Newark, N. J. 1-29-48

REPORT OF THE MOUNT JOY TOWNSHIP FROM FIRST MONDAY IN JANUARY 1947 TO FIRST MONDAY IN JANUARY 1948.

CASH BALANCE AT BEGINNING OF YEAR	
Cash in Bank, Securities and Reserves	\$ 2,322.37
Light Fund	202.20
Total	2,524.57
RECEIPTS	
Taxes Collected in Cash during Year	8,388.02
Taxts Collected on Old Duplicates during Year	920.79
Total	9,308.81
EXPENDITURES	
General Government	1,360.17
Protection to Persons and Property	337.29
Highways	14,157.81
Miscellaneous	10,092.20
Debt Service	66.28
Light Fund	662.28
Total	26,676.41
CASH BALANCE AT END OF YEAR	
RESOURCES	
Due from Tax Collectors	773.05
Due from County for County Aid	4,000.00
Value of Township Machinery and Township Buildings	13,500.00
Total	18,273.05
LIABILITIES	
Outstanding Bank Notes and Certificates of Indebtedness	8,000.00
Total	\$ 8,000.00
Signed H. MARTIN HOFFER PAUL M. HESS Auditors	