

### 1,700 Miles Highways Improved During 1946

Department of Highways maintenance forces have improved more than 1300 miles of road during the 1947 construction season. A major portion of the work done by the Department forces was centered on the "farm to market" roads on the State system.

There were approximately 855 miles of "farm to market" roads improved in 1947. Of that total, 275.18 miles were surfaced with macadam and 578.81 miles were stabilized, which provided an all-weather surface for residents living along those sections.

In addition the Department forces reconstructed, resurfaced or widened nearly 400 miles of road this past season. The Department forces also completed work on 80 bridges

since June 1. When the mileage of road improvements completed by Department forces in 1947 is added to the 385 miles finished by contractors the year's total will be approximately 1700 miles.

**INSIST ON GOOD TREES**  
High-producing disease-free strains of Montmorency cherries, available at most Pennsylvania nurseries, are good insurance against introduction of disease and low-producing trees, say Penn State extension fruit specialists.



### Now—Not Later

IF YOU expect to be paid for damage to your home, your household goods, or your automobile, be sure to get your insurance before a loss occurs.

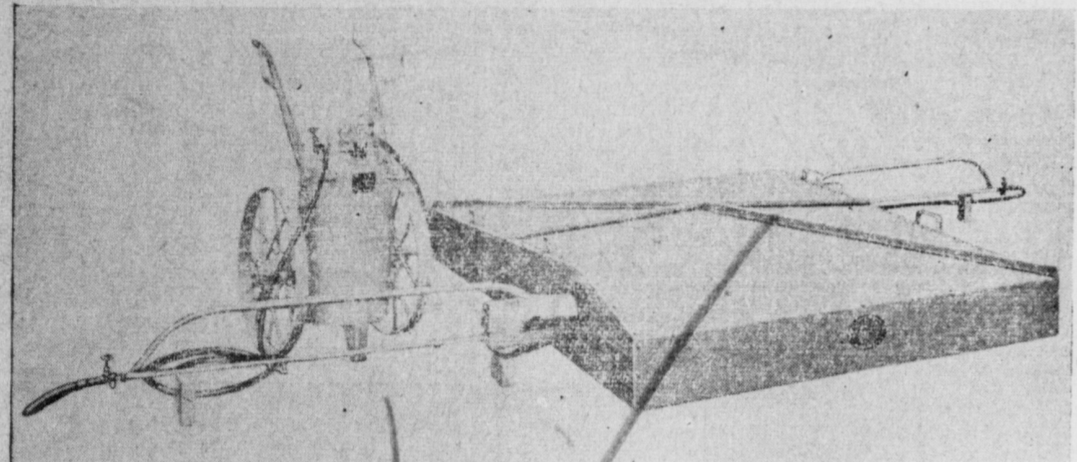
Better have all your insurance checked NOW by this Hartford agency.

O. K. SNYDER  
O. K. SNYDER, Jr.  
MOUNT JOY PHONE 15  
Notary Public

## Hauck Sterilizing Equipment

For Sterilizing Tobacco Bed Soil—With Detachable Flame Guns

Burns Kerosene or Light Furnace Oil  
AN IMPROVED TYPE OF OIL BURNING STERILIZER EMPLOYING THE HEAT PRESSURE METHOD BURNER HEAT 2000 F. FLAME TEMPERATURE



- No. 550 Soil Sterilizing Equipment With Hood Measuring 6 ft. by 8 ft.  
GREATEST AND MOST MODERN PIECE OF EQUIPMENT EVER OFFERED TOBACCO FARMERS
- STERILIZES SOIL 5 INCHES DEEP IN 6 MINUTES TIME
  - HEAT PRESSURE METHOD HEATS EVENLY, QUICKLY AND THOROUGHLY.
  - FLAME DOES NOT DIRECTLY TOUCH THE SOIL. HEATS BY GASES ONLY.
  - HEAT SUPPLIED BY FLAME GUNS—REQUIRING NO AIR COMPRESSOR OR OTHER AUXILIARY EQUIPMENT.
  - FLAME GUNS CAN BE USED SEPARATELY FOR DESTROYING WEEDS, BRUSH AND MANY OTHER JOBS.
  - QUICK - SAFE - ECONOMICAL.

Within recent years the application of an intense heat has become recognized as the easiest and most satisfactory method known for destroying not only weeds and brush but also for destroying weed seeds. Hauck Manufacturing Co., producers of the first and original Flame-Gun designed for agricultural use, offer the tobacco grower a superior sterilizing equipment for tobacco beds. A hood of special design accomplishes thorough sterilization without permitting the direct flame to touch the soil. A heat pressure is created under the hood forcing high temperature heat into the soil. This completely destroys weed seeds.

use for the complete control of weeds, unwanted grasses, vines and brush; for the disposal of moist green trash or growth; for disinfecting by flame application poultry yards or animal breeding pens and for implement, tractor or truck repairs where an intensely hot flame or torch is needed. Complete No. 550 Soil Sterilizing Equipment consists of a reinforced steel hood 6 ft. by 8 ft. with carrying handles, 2 heavy duty Hercules model Flame-Gun burners, one 25 ft. length and one 12 ft. length oil resisting hose with union connections and a 15 gallon heavy welded steel fuel tank guaranteed for 100 lbs. working pressure. Tank is fitted with built-in heavy brass pump, 100 lb. pressure gauge, 2 tank oil needle valves and large size filler cap. Tank also fitted with two 24 inch roller bearing wheels, cold rolled steel axle, handle bars with hose rest, burner supports, tank leg and foot trip. Shipping weights: Hood furnished in 2 pieces for convenient shipping 200 lbs. Hercules 2 Burner Equipment 195 lbs. Code Word: Yonfa.

Where the soil is loose, fine, and 6 inches or more deep the Hauck Sterilizing Equipment will sterilize the soil 5 inches deep in six minutes time. In Lancaster County it has been found where soil has been treated, tobacco seed beds produced better and heartier tobacco plants, than where steam was used. The detachable Flame-Guns are adapted to all year

SOLD BY **Martin G. Musser** PHONE MARIETTA 3359 Maytown, Pa.

### C. M. WEBB & SONS

122 South Barbara Street  
MOUNT JOY, PA.  
ROOFING — SPOUTING  
SHEET METAL WORK  
ROOF PAINTING

PHONES:  
Mt. Joy 117-J (Manheim 2114)

### BENNETT'S Restaurant

45 EAST MAIN ST.  
MOUNT JOY  
Open 8 A. M. to 10:30 P. M.  
Monday thru Saturday  
Dinner served 11-2 and 5 to 8.

We Will Open For  
SUNDAY DINNER  
FEBRUARY 1st  
11:30 to 2:30 P. M.  
Breyers Ice Cream  
\$1.90 Gal. Container

Patronize Bulletin advertisers.

### WANT TO RENT SEVERAL DWELLINGS

Within a radius of five miles of Mount Joy or Florin  
WRITE P. O. BOX 85, c/o M. L. MOUNT JOY, PENNA.  
10-16-47

### Mount Joy Frozen Foods

LOCKER PLANT

Hamburger Patties	4 for	.35c
Red Sour Cherries - Pitted and Sugared		.30c
Pineapple - Sliced		.30c
Peas Fancy Green	12 oz.	.25c
Peas Fancy Green	2 1/2 lbs.	.65c
Eroccoli		.30c
Mixed Vegetables - Good for Soup		.25c
Pure White Corn Syrup	5 lbs.	.50c
String Beans		.23c
Black Sweet Cherries - Pitted		.21c
Mince Meat		.40c

SPECIAL FOR THIS WEEK

ALSO THAT GOOD  
CLOISTER DAIRY ICE CREAM  
1 pint .25 2 qts. .95 1 gal. \$1.85  
FROZEN - MEANS FRESH

### ADJUSTING INVENTORY

Shop and Save  
THURSDAY THRU NEXT SATURDAY

Quality Yarn  
**WET MOP**  
16 oz. size, handle.  
89c

AC or DC  
**ELECTRIC TOASTER**

Steel Rod Supported  
**LINCO Step Ladder**  
\$3.98  
Sturdy, well-constructed 5 ft. size. Self-locking pail shelf.

Attractive, Durable  
"CAPITOL"  
**ELECTRIC TOASTER**

Large Size Wool  
**Sponge**  
Soft, durable.  
69c

EXTRA SPECIAL VALUE  
Service for 6... 35 P.  
**DINNERWARE SET**  
\$6.98

Chip Resistant  
**TUMBLER**  
9 1/2 oz. Size  
59c doz.

Highly Absorbent  
**CHAMOIS**  
Soft... quality  
\$1.39

Green Lacquered  
**MAIL BOX**  
Reg. \$1.00 value  
89c

26", 8 Pt. Larsan  
**HAND SAW**  
\$1.98

12 Pc. Stainless Steel  
**Knife & Fork Set**  
\$2.98

Plenty of wear in this  
**Scrub Brush**  
19c  
8"x2 1/2", white bristles

### Extra Special Bargains

**FIRE KING OVEN GLASS**

Pie Plates	2 for	19c
Loaf Pan	2 for	49c
Baking Dish	(was 45)	29c

**STROLLERS** only \$7.95 (Reduced from \$9.95)

**LAMP SHADES** Reduced 50%

**MODEL AIRPLANES** 50% off

**2 BURNER ELECTRIC HOT PLATE**  
\$6.95 (Reduced from \$8.25)

**H. S. NEWCOMER & SON, Inc.**  
MOUNT JOY, PENNA.

AMERICAN HARDWARE  
THE SIGN OF SAVINGS

## Acme Food Values of the Week

Spread the children's bread with plenty of delicious  
**Apple Butter**  
The Big 28-oz jar costs only **21c**

And today's best bread value is  
**Supreme BREAD**  
13c

Rob Ford Cherry Preserves jar 33c  
Mott's Assorted JELLIES 10-oz glass 17c  
Clenwood Raspberry Jelly 12-oz jar 19c

Northwestern Delicious  
**Eating Apples** 3 lbs 33c

Sweet Juicy Fla. **ORANGES** 2 doz 49c 176-200  
Juicy Thin Skin Fla. **Grapefruit** 70's 4 for 19c

**Tangerines** Sweet Fla. 170's doz 19c

**Snow White Cauliflower** head 25c  
**Texas Cabbage** 3 lbs 17c  
**New Fla. Lima Beans** 1 lb 19c  
**Fresh Sprouts** Fresh Calif. qt box 29c  
**Fresh Fla. Radishes** bunch 5c

**Solid Pack Tomatoes** 2 No 2 cans 25c  
**Farmdale Large Peas** extra standard 2 No 2 cans 31c  
**Sunrise Tomato Juice** 2 18-oz cans 19c  
**Fancy Alaska Pink Salmon** tall can 49c  
**Van Camp's Tomato Catsup** 14-oz bot 21c  
**Ritter Asparagus Soup** 3 10 1/2-oz cans 10c  
**Hixson Tapioca Pudding** 2 pkgs 18c

Lean, Short Shank Smoked  
**PICNICS** 49c

**COUNTRY STYLE FRESH SAUSAGE** lb 49c  
**SKINLESS FRANKFURTS** lb 49c

RIB END  
**PORK LOIN ROAST** lb 49c

Dressed and Drawn, Ready to Cook  
**CHICKENS** Stewers or Roasters lb 59c

Claw Crab Meat lb 89c  
Filets of Perch lb 52c  
Fancy Haddock Filets lb 45c  
Fancy Shrimp lb 79c

WE PAY 12c LB FOR USED FATS

**Bakery** Fresh Virginia Lee  
**Sugared Do'nuts** doz 21c

Home Style, Delicious  
**Strawberry Iced Layer Cakes** ea 65c  
**Devilfood or Coconut Layer Cakes** ea 45c  
**Coffee Rings** ea 19c  
**Assorted Buns** pkg 19c  
**Food Angel Cakes** ea 49c  
**Cup Cakes** pkg 10c

**HEINZ Vegetable Soup** 2 cans 27c  
**ASCO COFFEE** 2 lbs 43c  
55c lb 43c  
Save the Coupons  
**HEINZ Win-Crest Coffee** 2 lbs 40c  
Ideal Coffee lb 51c

**SWAN SOAP** 2 cks 23c  
**LUX TOILET SOAP** 2 cks 21c  
bath size 15c  
**Lifeguard Soap** 2 cks 21c

**LUX FLAKES** small pkg 16c large pkg 38c  
**RINSO** small pkg 16c large pkg 38c  
**Gold Dust** 36-oz pkg 21c

**Hunt Club Dog Food** 5 lb bag 65c  
**Old Dutch Cleanser** 2 cans 19c  
**Speed-Up BLEACH** 14-gal jug 19c  
**Jest Dog Food** 3 jars 25c

**FAMILY CIRCLE** Get the January issue Only 5c  
**Big Bargain** On sale at all stores

Prices Effective Jan. 15-16-17, 1948. Quantity Rights Reserved.

**Acme Markets**

## Our Greatest Shoe Sale

These shoes taken from our Regular Stock and Greatly Reduced for Quick Clearance.  
Come early for Good Selections  
Sale Starts Friday, January 16th

130 prs. Women's Dress Shoes \$2.00 PR. All Sizes	<b>SPORT OXFORDS</b> ALL SIZES BUT NOT IN ALL STYLES Values to \$6.95 FOR QUICK CLEARANCE <b>\$2.97</b> pair	100 prs. Women's Dress Shoes \$1.00 PR. Most all sizes
JUST 60 PAIRS HOUSE SLIPPERS Values to 3.99 <b>75c</b> pr.	<b>1 LOT CHILDREN'S Oxfords \$1.97</b> Broken Sizes.	

**85 pairs Casual Shoes** values to \$5 **\$2.00** pair  
Few pairs Boys' Oxfords \$2.97—Women's Blk. Sport Oxfords med. heel \$2.00 pr.  
**JACK HORNER SHOES** Mount Joy, Pa.

REDDY KILOWATT ..... Cook Electrically ..... Pennsylvania Power & Light Company

**HITCHES** JOE'S QUICK LUNCH

**SWITCHES** JOE'S QUICK LUNCH

**RICHES** JOE'S QUICK LUNCH

If YOU WANT TO LINE UP MORE CUSTOMERS GET A LIFE ON REDDY YOUR ELECTRIC CHEF!

Fa  
An  
Of  
Mrs  
The  
Visiting  
ters, B  
for the  
betheow  
heim  
the an  
ing Nu  
home o  
Marlett  
Tuesday  
It wa  
A tot  
made  
were st  
visits  
Life In  
901 visi  
patients  
subdivi  
visits.  
were 36  
73 organ  
ed amo  
covered  
The  
particip  
munity  
Calls

Abram  
Killed  
Auto  
Abram  
was ki  
automob  
road ne  
south o  
limits.  
betheow  
Dr. J  
coroner  
death  
skull.  
Driven  
Emenhe  
betheow  
work  
Garage  
employee  
Emenhe  
believes  
walking  
road. H  
Snyder  
Emenhe  
had been  
the insi  
20 miles  
Police

Breth  
Sale  
The  
Church  
a publ  
February  
Grounds  
Pike to  
activities  
S. Cly  
arrange  
been s  
churches  
contribu  
including  
impleme  
apples,  
and flour  
Food  
organiza  
added to  
said. T  
a.m.

MOUNT  
WON SI  
The V  
paper,  
prize in  
sponsors  
ciety of  
nection  
campaign  
The a  
to the  
"Christm  
Tubereu  
The so  
nwarded  
Crier",  
Seals A  
by Barb

WHAT A  
HAVING  
We the  
of fun in  
of coun  
with this  
Council  
them at  
511th ba  
and they