

**Stehman Brothers**  
**Dodge & Plymouth**  
 Sales and Service  
 Phone 2911 SALUNGA, PA.  
 We Also Paint Cars

**BIBLE SCHOOL AT CROSS ROADS CHURCH**  
 The Bible School at Cross Roads Brethren in Christ Church will be held from Monday, July 15 to 26th, every evening from 7 to 9 p. m.  
 There will be classes for all ages from Kindergarten to Adults.  
 Cars will come to the American Legion, Union National Bank, First National Bank, Evangelical Church and Stauffertown. Anyone wishing to attend, please be at any of the above places not later than 6:40 p. m.  
**TO HOLD PICNIC JULY 13**  
 The Centerville U. B. Church will hold their annual picnic July 13, beginning at 6 P. M. East Hempfield Twp. school band will furnish the music, Games for the children.

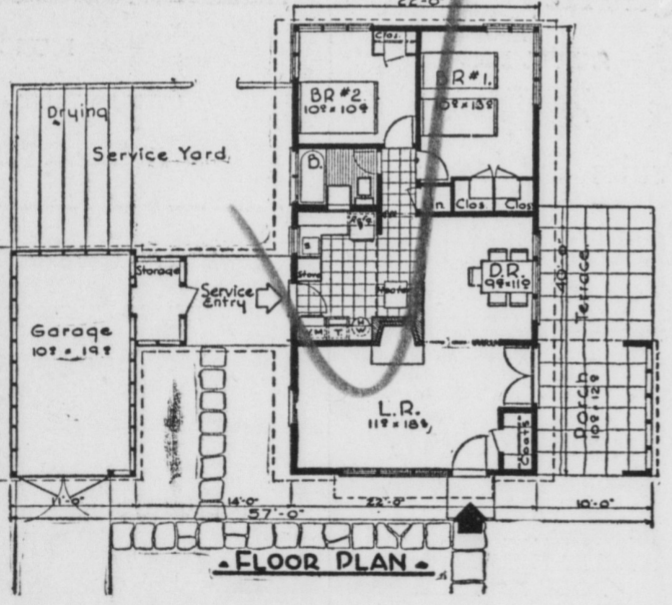
**Motor Tune-up VAN'S SERVICENTER**  
**\$3.50**  
 Will adjust your carburetor, distributor, points, clean spark plugs and set gaps, check battery and generator.  
 OR FOR  
**\$6.25**  
 We will overhaul your distributor and carburetor and do the above list of work. All parts are extra in the above flat prices.  
 FOR APPOINTMENTS PHONE MOUNT JOY 256

First National's House-of-the-Month Club  
**"THE GRAYSON" . . . for July**



**THE GRAYSON**

The first of a new series of "minimum" Houses-of-the-Month of especial interest to veterans, the Grayson recognizes present building restrictions. With the main section measuring only twenty-two feet in width (or thirty-two feet with the covered porch and terrace) this house may easily be built on a narrow plot with provision made for the possibility of a garage to be located in the rear.



**First National Bank and Trust Company**  
 Mount Joy, Pennsylvania

**PAVE and SAVE**  
 with *Guaranteed*  
**COLAS**  
 (ASPHALT)  
 THE MODERN WAY TO SURFACE ROADS..ECONOMICAL..ENDURING AND SO SMOOTH!  
**CARL B. DROHAN**  
 MOUNT JOY, PENNA.  
 Also—Ideal for Driveways, Parking Areas, Farm Lanes, etc. . . . at low cost maintenance!

**Religious News In This Community**

**NEWS PERTAINING TO ALL THE CHURCHES IN MT. JOY AND THE ENTIRE SURROUNDING COMMUNITY.**  
**Church Of God**  
 Rev. H. M. Mumper, Pastor  
 Sunday, July 14  
 9:30 Church School.  
 10:30 Morning Worship.  
 6:30 C. E. Society.  
 Wednesday  
 7:30 Missionary Meeting  
 8:30 Choir Rehearsal

**Gospel Tabernacle**  
 Rev. Roy S. Forney, Pastor  
 Sunday, July 14  
 9:30 a. m., Bible School, John Henry Brubaker, Supt.  
 10:30 a. m. Morning Worship  
 6:45 p. m. Young Peoples fellowship  
 7:30 p. m. sermon  
 Wednesday  
 7:30 p. m. Prayer services

**Trinity Evangelical Cong. Church**  
 L. Dallas Ziegler, Pastor  
 Sunday, July 14  
 9:30 a. m. Sunday School. A. A. can testify.  
 10:30 a. m. Worship and sermon.  
 Tuesday  
 7:45 p. m. Young People's Society  
 Wednesday  
 7:30 mid-week prayer meeting.  
 8:15 p. m. Choir Rehearsal.  
 Thursday  
 7:30 p. m. W. M. S. will meet.  
 8:15 p. m. Ladies Aid Society will meet. Election of officers will be held.

**Donegal Presbyterian Church**  
 Rev. John D. Tate, Pastor  
 Sunday July 14  
 9:30 a. m. Church School.  
 9:30 a. m. Young Men's Class  
 Amos Gish, Teacher.

**First Presbyterian Church**  
 Rev. John D. Tate, Pastor  
 Sunday July 14  
 9:30 a. m. Church School  
 9:30 a. m. Adult Bible Class  
 10:45 a. m. Morning Worship  
 The Sacrament of The Lord's Supper.  
 Friday  
 7:45 p. m. Preparatory Service.

**St. Mark's United Brethren**  
 Ezra H. Ranck, Pastor  
 Sunday, July 14  
 9:00 a. m., Sunday School.  
 10:15 a. m. Morning worship  
 7:30 evening worship  
 Holy Communion will be celebrated in both services.  
 Wednesday  
 7:30 p. m., Midweek Prayer Service.  
 Thursday, Dorcas Society Outing.

**Methodist Church**  
 Mount Joy, Pa.  
 Rev. C. A. Price, Minister  
 Dr. E. W. Garber, Supt.  
 Sunday, July 14  
 9:00 a. m. Worship. Theme, "Strength".  
 10:00 a. m. Sunday School.

**Salunga Methodist**  
 Rev. C. A. Price, Minister  
 Miss Alice Strickler, Supt.  
 Sunday, July 14  
 10:00 a. m. Sunday School  
 11:00 a. m. Worship, Theme, "Strength"

**Special Services For Children**  
 July 8 - 26  
 Miss Betty Shelly, a student of the Philadelphia School of the Bible, will conduct special services for children in the Macedonia A. M. E. Church on Fairview St., Monday through Friday night of each week at 7:30. Miss Shelly will talk to the children each night, illustrating her Bible story with pictures, using the flannelgraph system. She will also teach the children gospel choruses. Children of all ages are invited.  
 A special invitation is given to all parents to attend each children's service. All folks under 100 years of age are invited. First service on Monday night July 8th.

**SUMMER BIBLE SCHOOL IN MENNONITE CHURCH**  
 A Summer Bible School for all children of the community will be conducted at the Mt. Joy Mennonite Church, with sessions each evening, Monday through Friday, from 7:00 to 8:45, beginning July 15 and continuing until July 26. There will be classes for Kindergarten, Primary, Junior, High School and Adults. We welcome both young and old to meet with us in the study of God's word.

Stimulate your business by advertising in the Bulletin.  
 Subscribe for the Bulletin.

**FATHER AND DAUGHTER ACT**



Life with father at home is fun. Daddy shows small Evelyn a thing or two about bed making, Army style.

"Your mother should be watching this," says ex G.I. "Mac" as he tucks that Bunny Esmond blanket into place. "But don't get the notion I'm going to make a practice of it. Mitreing is mama's work now."  
 Bed making is really an art. It's good engineering, too, as any G.I. can testify. Mitred corners are regulation sheet and blanket stuff. Here are the rules as they appear in a hand-book of The Esmond Mills, who have made millions of blankets during the past 40 years.  
**THE RIGHT WAY TO MAKE A BED**  
 1. The bottom sheet is spread over the mattress, the center crease running down the center of the bed, and the narrow hem at the foot, with plenty of tuck-in at both ends. Tuck the sheet in at the head and then at the foot very securely. Then mitre the corners as follows:  
 a. Lift up the edge of the sheet about two feet from the corner and form a triangle.  
 b. Lay this triangle back on the bed; tuck the base of it under mattress.  
 c. Tuck the rest of the triangle under the corner of the mattress in a neat diagonal fold that won't pull out.  
 2. The second sheet is spread the same way but with the under side of the hems up, with enough overlap at the top (at least 18 inches) to fold over blankets.  
 3. The blankets and the second sheet should be folded under TOGETHER when the corner is laid back for mitreing. Let the blanket and the second sheet hang loose at the side and do not finish mitreing corners yet.  
 4. A third sheet may be put on top to protect the blankets. Bring it just even with blankets, then fold second sheet over it. Complete the mitreing.  
 Obviously, any child can do it.

**BIBLE SCHOOL AT FLORIN**  
 Daily vacation Bible School sessions will begin in the Florin Church of the Brethren on July 22 and will continue until Aug. 2. Sessions will be held daily from 7 to 9 p. m. There will be classes for children, young people and adults. Everyone Welcome.  
 There is no better way to boost your business than by local newspaper advertising.  
 Stimulate your business by advertising in the Bulletin.

**76th ANNIVERSARY**  
**LANDISVILLE CAMP MEETING**  
 LANDISVILLE, PA.  
 8 Miles West of Lancaster in the Harrisburg Pike  
**July 19 to July 28**  
 Ten Days of Real Inspiration, featuring Well-Known Guest Speakers, an Talented Musical Groups from Lancaster City and County.  
**COME AND BRING YOUR FRIENDS**  
 PLENTY OF FREE PARKING SPACE  
 7-11-18



**Where do we go from here?**  
 Where can you get another home . . . additional furniture, a refrigerator, vacuum cleaner, or more clothes today?  
 Yes, even though you have enough fire insurance to cover your financial loss, how are you going to buy the things destroyed . . . at any price in these times?  
 Throughout the nation, irreplaceable property is being burned up at the rate of 50 million dollars every month! Think of that—over half a billion dollars a year—while our returning veterans search frantically for shelter! Think of how this waste retards the day when they can find decent places to live! Think of the jobs lost every time a business structure burns!  
 War-worn equipment and wiring account for some of these costly fires, but CARELESSNESS is by far the most frequent cause of this destruction. More care means fewer fires!  
 Fire Prevention is vitally important to every citizen who hopes to see our nation recover quickly from the aftermath of war. It is important to every responsible person who realizes that FIRE means lost Homes, lost Jobs and lost Lives!

**BE CAREFUL!**  
 PRACTICE FIRE PREVENTION AND HELP REDUCE THIS APPALLING FIRE DESTRUCTION, WASTE AND LOSS  
**O. K. SNYDER**  
 INSURANCE — NOTARY PUBLIC

**Acme Markets**  
 Drink More Fruit Juices  
 Healthful, Delicious, Economical Fruit Juices are rich in sunshine vitamins. You enjoy drinking them . . . and they are good for you. We offer a wide variety.

**Natural Florida GRAPEFRUIT JUICE**  
 big 46-oz can 29c  
 2 18-oz cans 25c

**Orange and Grapefruit BLENDED JUICE**  
 big 46-oz can 39c  
 18-oz can 18c

Ideal Fancy, Grade A Sweet  
**ORANGE JUICE**  
 18-oz can 19c 46-oz can 45c

S & W Apple Juice 4c 38c Ideal Prune Juice 1/4 qt 25c  
 Lemon Juice 10c 9c Lime Juice 10c 10c  
**Sun Rich Orange Drink** 1/4 gal 39c  
**Golden Center Wheat Germ** 1 lb pkg 25c  
**Junket Rennet Powder** assorted pkg 8c  
**Sunshine Hi-Ho Crackers** 1 lb pkg 19c  
**French Kettle Onion Soup** can 23c

Here's A Peach of A Sale -- Don't Miss It!  
**U. S. No. 1 Delicious Freestone PEACHES**  
 4 lbs 25c Bushel Basket \$2.99

**Luscious Arizona CANTALOUPE** lb 9c  
**Sweet California Plums** lb 19c  
**Jumbo California Pascal Celery** stalk 23c  
**New Green Cooking Apples** 2 lbs 23c  
**Small Tender Local Squash** 2 lbs 15c

**Large Red Ripe WATERMELONS** ea 98c

**Chef-Boy-Ardee Products**  
 Spaghetti Dinner 16-oz jar 32c  
 Spaghetti Sauce 8-oz can 10c  
 Ravioli with meat 16-oz jar 15c

**Asco Orange Pekoe TEA**  
 Quality with economy  
 1/2 lb 19c 3/4 lb 35c

**SPRY Digestible Shortening**  
 On Sale As Allotted  
 lb 24c 2 lbs 47c

**Acme Seafood Savings**  
**Fresh Pan Trout** lb 25c  
**Fancy Large Croakers** lb 25c  
**Boneless Steak Fish** lb 25c  
**Freshly Picked CRAB MEAT** lb can 89c

**Campbell's Asparagus Soup** 10 1/2-oz can 11c  
**Rudco Noodles** tomato sauce 16-oz jar 19c  
**Beech-Nut Strained Foods** 3 cans 23c  
**Betty Crocker Soup Mix** noodle or pea 3 pkgs 25c  
**Farmdale Cut Green Beans** 19-oz can 13c

**Tay-Kof Washing Powder** lb pkg 23c  
**Dethol Insecticide** 20-oz can 23c

**PALMOLIVE SOAP**  
 3 cks 20c 2 lbs 19c

**Octagon Cleanser** 2 cans 9c  
**Oct. Toilet Soap** 2 cks 9c  
**Octagon Soap Powder** 1 lb pkg 16c  
**Octagon Soap** 3 bars 14c  
**Super Suds** 1 lb pkg 23c  
 (On sale as allotted)

**Lem-O-Pine Jellied Soap** 2-lb jar 29c  
**SUNBRITE CLEANSER** 2 cans 9c  
 For Canning Satisfaction

**Ball** JARS, CAPS, LIDS and RUBBERS  
 Pints DOZ 55c Quarts DOZ 65c  
**JELLY GLASSES** doz 39c

Prices Effective July 11-12-13, 1946. Quantity Rights Reserved.  
**Your Dollar Buys More at the Acme**