



GET EVERYTHING YOU NEED FOR
HALLOWE'EN
- AT -
MARTIN'S 5c & 10c STORE

SUPPLIES

-
- CATS
- HORNS
- MASKS
- PUMPKINS
- GHOSTS
- SKELETONS
- NOISEMAKERS

Bachman Chocolates

OTHER WHOLESOME CANDIES
Chocolate Chocolate Candy
Almonds Peanuts Bars

LADIES' HOSE
41c-48c-57c-62c-75c-89c

LARGE ASSORTMENT
NEW LAMP SHADES

PARTY NEEDS

- GAMES
- CANDLES
- NAPKINS
- FAVORS
- PLATES
- DECORATIONS
- Large Assortment of CUSTOM JEWELRY
- GREETING CARDS
- TABLE CLOTHS



Sale Register

If you want a notice of your sale inserted in this register weekly from now until day of sale. ABSOLUTELY FREE, send or phone us your sale date and when you are ready, let us print your bills. That's the cheapest advertising you can get.

Friday, October 19—On the premises, a farm situated southeast of the Boro of Elizabethtown, in Mt. Joy Twp., 98 acres two family brick & frame house, 3-car garage, frame bank barn, tobacco shed, pig sty, poultry house by Isaac M. Kopp. Walter Dupes, Auct.

Wednesday, Oct. 10—On the premises in Rotherstown, opposite the Mennonite Church, a full line of household goods by Jonas N. Saunders. Edgar Funk, Auct.

Saturday, October 13—On the premises in Manor Twp., at Kauffman Machine shop, 2 1/2 miles south of Central Manor, household goods and implements by Mary F. Kauffman. Edgar Funk, auct.

Saturday, October 20—On the premises midway between Florin and Mt. Joy, Poultry houses and equipment by Charles Anderson. C. S. Frank, Auct.

Saturday, Oct. 20—On the premises on Lincoln Highway west, 3 miles west of Lancaster, across from Stumps' Gas Station, Carpenter Tools and Household goods by Mrs. Ben Herr. Edgar Funk, Auct.

Friday, Oct. 26—At the Bulletin Office, East Main St., Mt. Joy at 7 p. m. a lot of ground with a 2 1-2 story brick dwelling, 1 story frame barber shop and cement block garage by Anna B. Hershey, admx. of the estate of Joseph B. Hershey, C. S. Frank, auct. See advertisement.

Saturday, Oct. 27—On the premises in Mt. Joy township, four miles east of Elizabethtown, on the road leading from Riser's Church to Elizabethtown - Lebanon highway a farm of 54 acres with improvements, also personal property by Anna G. Myers, executrix of Norman G. Myers, C. S. Frank, auct. See advertisement.

Wednesday, Oct. 31—On the premises in West Hempfield Twp., on the road, leading from Ironville to Mountville, one-half mile east of Ironville, a 7 acre farm with a 2 1/2 story brick house and frame kitchen attached, frame bank barn and other buildings by Mary A. Miller. Edgar Funk, Auct.

Wednesday, Nov. 14—On the premises in West Lampeter Twp., on the Gen'l. Hand farm, in the rear of Williamson Park, horses, dairy cows, bull, fat hogs, laying hens and farming implements by Charles G. Shank, Edgar F. Funk, Auct.

Thursday, Nov. 15—On the premises in Manor Twp., two miles south of Mountville and one mile east of Manor Camp grounds, on the Charleston Road, 14 Holstein cows, stock bull, seed hog and farm implements by Landis M. Shertzer. Edgar Funk, Auct.

PREVENT CANNIBALISM
Keeping the pullets comfortable and contented when first confined to laying quarters is first to avoid cannibalism, point out poultry extension specialists of the Penna. State College. Oats, green feed, or leafy hay in the ration also help.

Stimulate your business by advertising in the Bulletin.

LOCAL ROTARY CLUB OBSERVED FARMERS DAY

Since this is Farm Show week, and in keeping with the spirit of this week, Tuesday was known as "Farmers Day" at the meeting of the Rotary club and each member was asked to bring a farmer friend along to the meeting. About sixty one, Rotarians, visiting Rotarians, guests and farmers attended this meeting.

There were fifteen farmers present, and each Rotarian introduced to the club, their farmer friend. D. L. Landis, L. W. Fetter and Tillman Ebersole represented the Elizabethtown Club, M. S. Moore the Lancaster Club and Frank MacFerran, the Lititz Club, were present.

The meeting was then turned over to Sim Horton, through whose efforts the speaker for the day was procured. He was Prof. J. M. H. Klein former history teacher at the F & M College, but now retired.

Prof. Klein said that it would be foolish for him to tell farmers how to farm or the business man how to operate his business, but he would talk about something that he knew more about, or a picture of the world as it is today, which proved very interesting.

ORPHANS' COURT SALE

Nos. 17 and 19 East Main Street, Mount Joy Borough, Lancaster County, Pennsylvania. A lot of Ground containing fifty (50) feet in front and in depth Northwardly one hundred eighty (180) feet to Apple Tree Alley on which are erected a 2 1/2 STORY BRICK DWELLING with all conveniences, a ONE STORY FRAME BARBER SHOP and a cement block garage in rear. This is a very desirable residence and business location, being in the heart of Mount Joy's business district.

SALE FRIDAY, OCTOBER 26, 1945 at 7:00 P. M., at the office of Mount Joy Bulletin, under order of Orphans' Court for payment of decedent's debts.

ANNA B. HERSHEY Admx. of Estate of Joseph B. Hershey Charles S. Frank, Auct. Wm. C. Rehm, Attorney 1043t

PUBLIC SALE

SATURDAY, OCTOBER 27, 1945
The undersigned will offer at public sale on the premises in Mt. Joy Township, four miles east of Elizabethtown on the road leading from Riser's Church to Elizabethtown, Lebanon highway:

A Farm containing 54 acres and 138 perches, more or less. The improvements thereon consist of a TWO and ONE-HALF STORY FRAME DWELLING with convenient rooms, SUMMER HOUSE, FRAME BANK BARN, HOG STY and CHICKEN HOUSE. Never-failing well at house. Water supply at barn provided by ram.

The soil on the farm is sandy loam, naturally fertile, and in an excellent state of cultivation. There is a variety of fruit on the farm. Adjoining lands of Raymond Kaylor, Milton Rider, Henry Forry and Amos Hess.

Also at the same time and place the following personal property: Highoven Popular range, with water tank, high shelf and two large warming closets, New heavy ropes, tacklings, garden tools; extension ladder, small ladders, grain forks, seven milk cans, strainer; pipe wrench, axes, saws, chick feeders, iron trough, lot of crocks, iron kettles, vinegar barrels, tobacco lath, Grindstone, 2 fish seines, large copper kettle, apple butter stirrer, lot of empty jars, Butcher outfit consisting of two meat grinders, lard press and box of butcher tools, canned fruit, cooking utensils, rockers, 6 kitchen chairs, settee, low sink, cupboard, old fashioned bureau, high glass cupboard, old fashioned; cherry bed, a lot of dishes some antiques; also a lot of articles too numerous to mention.

Sale to be held at 1:00 p. m. ANNA G. MYERS Executrix of Norman G. Myers, C. S. Frank, Auct. Garman & Baeshore, Clks. 10113t

CONTROL SOIL EROSION

Good soil management involves improving the soil and holding it in place, remind extension agronomists of the Penna. State College. Line, fertilizer, and manure improve the fertility of the land, while contour strips will prevent erosion from carrying away the soil and its added fertility.

COOL MILK PROPERLY

To maintain milk quality, hold the milk in insulated cooling tanks that are kept full of clean, pure, cold water, remind extension dairy specialists of the Penna. State College. Air cooling is slow and promotes spoiling by bacteria.

APPLY DDT PROPERLY

Farmers are urged to apply DDT properly if they expect to get good results in insect killing. Extension entomologists of the Penna. State

College report the effective spraying of 125 dairy barns in extension demonstrations this summer. All DDT used in these operations was the water-dispersible type.

When we start to complain, let's stop to remember that we are the only nation who comes from this war with their standard of living raised.

\$ SAVINGS \$
WITH SAFETY AND SERVICE

On **AUTOMOBILE** Purchases
This Agency offers without charge, its services in arranging the details for the lowest term bank financing on automobiles purchases. For **SAVINGS** with **SAFETY** and **SERVICE** See when you plan on buying your used or new car.

JEROME H. BRUBAKER
INSURANCE
314 N. BARBARA ST. MOUNT JOY, PENNA.
TELEPHONE 70-M

HURRY!
TO OUR STORE FOR QUALITY **CHICK SUPPLIES**

3-Way Action WATER TABLE
One Chek-R-Tab to quart of water acts as disinfectant, bowel astringent, jugicide. Easy, economical to use.
Ask for Purina CHEK-R-TABS

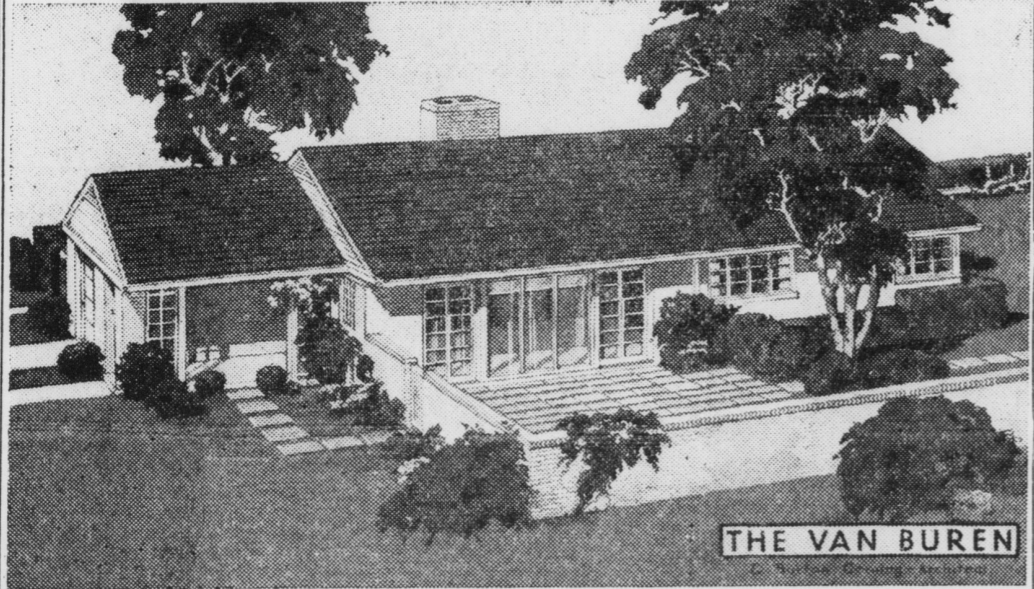
DON'T LET GERMS Kill Your Chicks
SPRAY PREMISES with CHEK-R-FECT
Kill pullorum, typhoid, and other deadly germs with new, economical soap-type disinfectant. One ounce makes gal. of spray.

BRING 'EM THROUGH THE Winter
IN GOOD CALVING CONDITION
...a variety of blended ingredients range cows need in every checker.
PURINA CATTLE CHECKERS

RAISE RABBITS IN YOUR BACK YARD for MEAT
It's a quick, easy way to supply delicious meat for your table. Rabbits aren't hard to feed when you...
Feed PURINA RABBIT CHOW

FAST GAIN LOW COST HIGH LIVABILITY
You get all three in Purina Chick Startena, America's favorite starter. Takes only 2 lbs. per chick. Fresh stock just in. Prewar quality.
Feed Purina STARTENA

H. S. Newcomer & Son, Inc.
Hardware
PHONE 200 MOUNT JOY



THE VAN BUREN

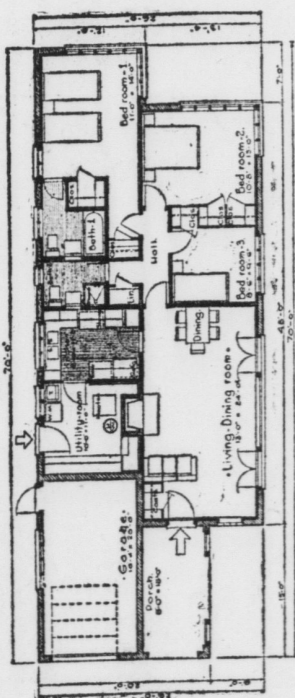
JOIN OUR HOUSE OF THE MONTH CLUB

We are happy to announce, for the benefit of prospective home builders in Mount Joy, the participation by this bank in an unusual time-tested plan which should help them wonderfully in their home building planning.

Briefly, the plan consists of the organization in this community of a **FIRST NATIONAL BANK & TRUST CO'S HOUSE OF THE MONTH CLUB**. The club is to be composed of every resident who may be interested in any phase of home planning and building, including prospective home owners, architects, building contractors and real estate dealers.

You are cordially invited to join the club. Membership is free and is offered to you by this bank as a form of public service. Each month we will provide the club members with a picture of the House of the Month, designed by the finest small home architects in America, thereby visualizing for them what may be the "home of their dreams." Each picture will visualize a different type of home, but the houses will be the result of wide, practical home-building experience.

The building pictured in this advertisement is the "House of the Month" for October, 1945. In our portfolio here at the bank may be found other types of buildings and plans. And members of our club may have free access to them at any time for examination and study. In this connection we wish also to announce our **HOUSE OF THE MONTH SAVINGS ACCOUNT**. By opening such an account the member may begin at once a home-building fund and is automatically enrolled as a member of the House of the Month Club, to all of its valuable privileges and facilities. Once your name is enrolled as a club member it is placed on our special mailing list and each month thereafter you will receive from us, free of charge, a leaflet showing a picture and floor plans of the newest and latest "House of the Month." Won't you come in or mail the coupon below so that you may be promptly enrolled as a member of the House of the Month Club?



THE FIRST NATIONAL BANK & TRUST CO.
MOUNT JOY, PENNA.
Please send me, free of charge, your selected House of the Month leaflet.
Name _____
Address _____
Tel. _____

First National Bank & Trust Co.
MOUNT JOY, PENNA.

Wanted
FAT HOGS
SOWS and STAGS
J. B. KELLER & BRO.
CATTLE
Mount Joy, Penna.

A DREAM OR A REALITY?
That house of yours—Do you dream of it or do you actually go home to it at night?

If it's still in the dream stage, and belongs to the landlord, come to us and let us help you realize it... We have a plan.

The B. & L. Plan is the "Average Wage Earners" way to buy a home. Finance your home the Interest-Reduction way.

The monthly installments are easy to meet, **YOU PAY IT AS RENT.**

Inquire NOW! Information Cheerfully given.

Mount Joy Building & Loan Association
Under Supervision State Banking Dept.

GRANT T. GERBERICH, Pres. E. M. BOMBERGER, Sec.
HENRY H. EBY, V. Pres. R. FELLEBAUM, Treas.

DIRECTORS:
HENRY G. CARPENTER R. FELLEBAUM HENRY H. EBY
GRANT GERBERICH CHRIST WALTERS DR. E. W. NEWCOMER
J. WILLIS FREED E. M. BOMBERGER JOHN M. BOOTH