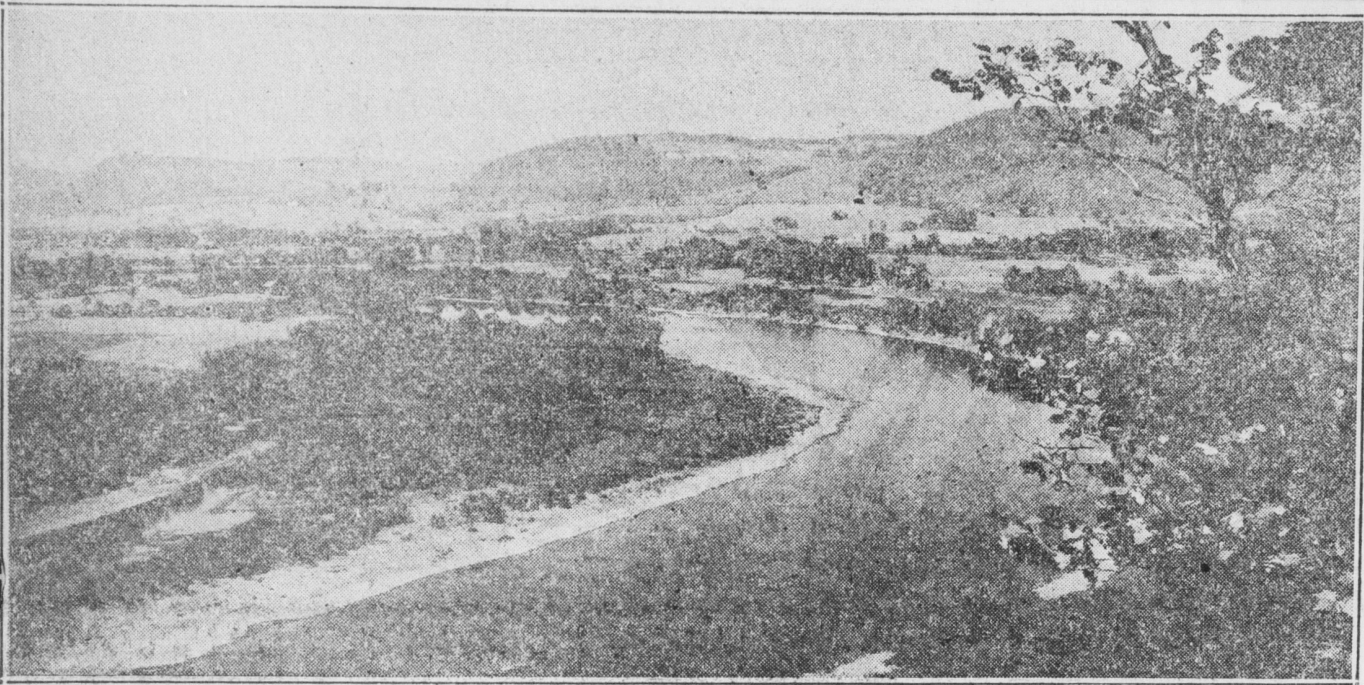


Typical Scene on the Susquehanna River



This is only one of hundreds of beautiful vistas seen by motorists following Pennsylvania's Susquehanna river. The spot is near Wysox, Bradford county, on route 6.

Photo from Pa. Publicity Comm.

THE WEEK IN BUSINESS

NEW YORK, June 15—BUSINESS—Just ten years ago this month the Federal Reserve Board's adjusted index of industrial production reached its all-time peak of 125 per cent of normal. In gloomy 1932 the index averaged 64, then climbed slowly back to 121 in December, 1936. Today the index stands at about 90, 11 points under the 1939 high of 101 in January. There, briefly, is the picture of how industry has fared during a decade of relative hardship for the whole country. Whither industry in the next decade is anybody's guess, but level-headed business leaders, who have lived through more than one depression, are quietly re-assuring on the outlook for tomorrow.

Typical of young industries that are going places is plastics, output of which for this year is estimated at \$150,000,000 a four-fold increase since 1935. The rate of growth of the aviation industry is astonishing. Aircraft exports alone this year are expected nearly to equal the industry's total production of last year. Other industries that have sprung up largely since 1929, and from which much in the way of employment may be expected, include the manufacture of streamlined trains and diesel engines, artificial silk, television and pre-fabricated homes.

WASHINGTON — Congressional mail is loaded with shingles upon which messages are written, a pet device of lumbermen when concerned about pending legislation. This time passage is sought for the bill requiring identification of materials bought by the government or used on federally-financed construction as domestic. Agitation is strong in the Northwest due to the Canadian trade treaty which is about to raise the quota limit on shingle imports, threatening shut-downs because of high wages paid in American mills. Pressure also is increasing from the "folks back home" for passage of a bill providing for federal government guarantee of bank loans to small business concerns, just as the Federal Housing Administration now guarantees mortgage loans by banks on small homes. The measure is conceded a fair chance, with much depending on the degree of Administration support its sponsors can muster, and the length of time Congress stewers over taxes and Social Security amendments.

Hens Have Colds; Roup More Severe Infection Much that is called roup is more of the nature of colds and the fowls affected will recover if given clean, dry quarters, free from direct drafts but with ample ventilation, advises an expert in the Rural New-Yorker.

True roup is a more severe infection and it cannot be said that any remedy known to poultrymen is efficacious to cure it. Any sick birds should be removed from contact with the healthy members of the flock to prevent spread of the infection. A fowl showing roup in at all severe forms is of little or no value, and usually may be disposed of to the advantage of flock and owner.

It should be borne in mind, however, that all colds are not roup and that recoveries from the former under good care may give an unwarranted reputation for value to whatever is used in treatment.

THINGS TO WATCH FOR—A not far distant when hotels and other public centers will have a mailomat. This new machine automatically prints a metered stamp on letters inserted in it upon deposit of the necessary coins, and then holds them for postal collection.... Air-conditions for Ringling Bros. Barnum and Bailey circus.... A new process for coating tobacco with wax to destroy harshness and preserve aroma.... Father's Day, June 18.... A crayon which will write indelibly on either hot or cold metals.... Sale of a new midget automobile through department stores, thus reverting to a practise once tried during the motor industry's infancy.

HEADLINES IN NEW YORK—U. S. bonds again reach new high on Treasury refunding plans.... Senate approves bill raising government debt limit to \$45,000,000,000, up five billion.... Eastern Railroads to reduce passenger fares this month in move to bolster competitive position with buses, airlines and private autos; round-trip coach fares Chicago to New York will be \$20.90 as against present \$45.38.... World's largest land plane, a Douglas DC-4, completes coast-to-coast flight with 42 passengers and crew of five.... Residential building in May largest since 1929.... Employment increase expected for June, led by usual seasonal expansion in farm work.... Steel ingot production recovers 2 1/2 points in week.... Electric output running 12 percent above last year.

WEDDING—The ingenuity of research, already responsible for new applications of rubber, sand, sugar cane stalks, asbestos, steel, aluminum, asphalt, gypsum and many other resources of farm and mine to the progress of construction technique, has scored another direct hit in the battle to put the building industry on a more efficient, low-cost basis. Out of the laboratory has come a wedding of colored plate glass with concrete to form an integrated load-bearing building material. When introduced at a recent convention of municipal building inspectors in Detroit, this new structural masonry unit—known as glastone—was hailed as one of the outstanding developments in its field during the last 20 years. Because of the different expansion characteristics of concrete and glass, joining of the two so that the latter wouldn't crack on very hot or cold days, has presented until now an un-

Robert Herer, of Williamsport, assistant treasurer; Rev. Robert T. McCutchen of Mount Alto, Miss Helen V. Owen of York and Albert E. Parkes of Phillipsburg, advisers.

FARM TOPICS

WILDLIFE AIDS IN CHECKING EROSION

Animals Devour or Trample Scanty Pasturage.

Supplied by the United States Department of Agriculture—WNU Service. One great difference between domestic and wild birds and animals is the effect they have on the land, particularly on soil erosion. It is common for farmers to pasture fields already injured by erosion—gullied land too rough for machine tillage or patches where running water has taken most of the topsoil. On such land, pasturage is likely to be scanty. If cattle, sheep or hogs are turned in they usually devour or trample such vegetation as may be left, says Dr. Ira N. Gabrielson of the bureau of biological survey. This increases the erosion damage.

Wildlife, in contrast, lives in and with the natural vegetation that develops in these rough areas not suitable for cropping. Rarely do creatures of the wild contribute to erosion. Rather, they allow vegetation to develop and hold the soil. Farmers can help, too, says Doctor Gabrielson, by seeding or planting quick-growing plants and trees that are soil binders and also provide cover and food for game. Catering slightly to the feeding and nesting habits of the game will attract birds and animals and increase the game crop which sportsmen will be glad to harvest—and pay for the privilege.

Domestic animals are likely to further destroy land that has been injured by cultivation. The same land devoted to wildlife will be preserved and even improved. This contrast often points out the difference between good management and poor management of the rougher and less fertile parts of a farm.

Check Below And See If You Have Any Of The Signs Quivering nerves can make you old and haggard looking, cranky and hard to live with—can keep you awake nights and rob you of good health, good times and jobs. Don't let yourself "go" like that. Start taking a good, reliable tonic—some made especially for women. And could you ask for anything whose benefits have been better proved than world-famous Lydia E. Pinkham's Vegetable Compound?

Let the wholesome herbs and roots of Pinkham's Compound help Nature calm your shrieking nerves, tone up your system, and help lessen distress from female functional disorders. Make a note NOW to get a bottle of this time-proven Pinkham's Compound TODAY.

Without fail from your druggist. Over a million women have written in letters reporting wonderful benefits. For the past 60 years Lydia E. Pinkham's Vegetable Compound has helped grateful women go "smiling thru" trying ordeals. Why not let it help YOU?

surmountable engineering problem.

U. S. bonds again reach new high on Treasury refunding plans.... Senate approves bill raising government debt limit to \$45,000,000,000, up five billion.... Eastern Railroads to reduce passenger fares this month in move to bolster competitive position with buses, airlines and private autos; round-trip coach fares Chicago to New York will be \$20.90 as against present \$45.38.... World's largest land plane, a Douglas DC-4, completes coast-to-coast flight with 42 passengers and crew of five.... Residential building in May largest since 1929.... Employment increase expected for June, led by usual seasonal expansion in farm work.... Steel ingot production recovers 2 1/2 points in week.... Electric output running 12 percent above last year.

U. S. bonds again reach new high on Treasury refunding plans.... Senate approves bill raising government debt limit to \$45,000,000,000, up five billion.... Eastern Railroads to reduce passenger fares this month in move to bolster competitive position with buses, airlines and private autos; round-trip coach fares Chicago to New York will be \$20.90 as against present \$45.38.... World's largest land plane, a Douglas DC-4, completes coast-to-coast flight with 42 passengers and crew of five.... Residential building in May largest since 1929.... Employment increase expected for June, led by usual seasonal expansion in farm work.... Steel ingot production recovers 2 1/2 points in week.... Electric output running 12 percent above last year.

U. S. bonds again reach new high on Treasury refunding plans.... Senate approves bill raising government debt limit to \$45,000,000,000, up five billion.... Eastern Railroads to reduce passenger fares this month in move to bolster competitive position with buses, airlines and private autos; round-trip coach fares Chicago to New York will be \$20.90 as against present \$45.38.... World's largest land plane, a Douglas DC-4, completes coast-to-coast flight with 42 passengers and crew of five.... Residential building in May largest since 1929.... Employment increase expected for June, led by usual seasonal expansion in farm work.... Steel ingot production recovers 2 1/2 points in week.... Electric output running 12 percent above last year.

U. S. bonds again reach new high on Treasury refunding plans.... Senate approves bill raising government debt limit to \$45,000,000,000, up five billion.... Eastern Railroads to reduce passenger fares this month in move to bolster competitive position with buses, airlines and private autos; round-trip coach fares Chicago to New York will be \$20.90 as against present \$45.38.... World's largest land plane, a Douglas DC-4, completes coast-to-coast flight with 42 passengers and crew of five.... Residential building in May largest since 1929.... Employment increase expected for June, led by usual seasonal expansion in farm work.... Steel ingot production recovers 2 1/2 points in week.... Electric output running 12 percent above last year.

U. S. bonds again reach new high on Treasury refunding plans.... Senate approves bill raising government debt limit to \$45,000,000,000, up five billion.... Eastern Railroads to reduce passenger fares this month in move to bolster competitive position with buses, airlines and private autos; round-trip coach fares Chicago to New York will be \$20.90 as against present \$45.38.... World's largest land plane, a Douglas DC-4, completes coast-to-coast flight with 42 passengers and crew of five.... Residential building in May largest since 1929.... Employment increase expected for June, led by usual seasonal expansion in farm work.... Steel ingot production recovers 2 1/2 points in week.... Electric output running 12 percent above last year.

When in need of Printing (anything) kindly remember the Bulletin NASH SALES SERVICE Electric and Acetylene WELDING MODERN PORTABLE EQUIPMENT R. U. Trimble PHONE 29R ELIZABETHTOWN

HOW ARE YOUR SHOES? DON'T WAIT TOO LONG BRING THEM IN City Shoe Repairing Co. 30 SOUTH QUEEN STREET LANCASTER, PENNA. NEURITIS RELIEVE PAIN IN FEW MINUTES To relieve the torturing pain of Neuritis, Rheumatism, Neuralgia or Lumbago in a few minutes, get the Doctor's formula NURITO. Dependable—no opiates, no narcotics. Does the work quickly—must relieve worst pain, to your satisfaction, in a few minutes or money back at Druggists. Don't suffer. Use NURITO on this guarantee today.

TRUTH about ADVERTISING By CHARLES B. ROTH

WHAT ABOUT PRICE? comes out publicly in the newspapers with his price. We consult these prices before we buy. Seen in this light, advertising becomes the informant that prevents dishonest sellers from taking advantage of us and our ignorance of prices we might have to pay. A recent mystery drama has the villain contriving to plunge the city into complete darkness for one night, so that he and his henchmen can dash in and make away with their loot. "We who have something dastardly to put over," he observed, "must needs fear the light." High prices, skimpy quality, gyp products also must needs fear the light. That is why they are cloaked in such phrases as: "We don't advertise. We pass the savings along to you." "Why pay the high cost of advertising? We put it into our goods," etc., etc.



Charles Roth

But the merchant who advertises uses the light of advertising, and asks you to compare his goods and his prices and to find out before you buy. You can always pay his price, because it is the right price. That you know because the protective power of advertising has told you that it is. And this protective power of advertising is working for you every time you unfold your newspaper and read an advertisement. That black print on white represents a buying guide which is worth several hundred dollars a year to you and your family.

Our safeguard against this is the advertising we see in the newspapers. That protects us. Under our competitive system of buying and selling, one merchant vies with another merchant for our trade. Each

Waffled Wafers



A WARM weather trick is to make crisp little biscuit sandwiches in a waffle iron! Between two rounds of biscuit dough spread a filling of deviled meat, chopped olives or any other tasty sandwich spread. Then "waffle" the biscuit sandwiches in a hot waffle iron. These are especially good with summer salads and beverages.

Sift together flour, salt and baking powder. Cut or rub in shortening. Add milk to make a soft dough, stirring just enough to make ingredients hold together. Turn out on lightly floured board, knead gently for a half minute. Roll out dough 1/4 inch thick. Cut with biscuit cutter. Spread half the biscuits with sandwich spread, cover with another biscuit. Place a "sandwich" in each section of a hot waffle iron and bake until well browned, about 3 1/2 minutes. Serve hot. Yield: 9 wafers.

WAFLED WAFERS 2 cups sifted flour 3/4 teaspoon salt 3 teaspoons baking powder 2 - 4 tablespoons shortening 2 1/2 - 3/4 cup milk 2 1/2 cup deviled ham

Episcopal (From page 1) Mrs. W. J. Watts is in charge of the production of this play, whose cast includes Robert Buller, Walter Schroll, Albert Peifer, Doris Hen-

Friday's Sessions Friday's sessions will begin with the service of the Corporate Communion with Rev. Joseph, the celebrant and Rev. Watts of Mt. Joy, his assistant. Following the breakfast in the high school there

will be a general meeting at which time the officers of the diocese will be elected. To Hold Classes Classes will be held at 10:30 a. m. These groups are being taught by the following: Worship, Dean Hiestand of Harrisburg; Study, Rev. Judd of Mechanicsburg; Service, Rev. Means of Harrisburg; Fellowship, Rev. Toadvine of Harrisburg. The conference group picture will be taken immediately before dinner on Friday.

The afternoon will be devoted to recreation and swimming at a pool near Lancaster, with a picnic supper being served at Mount Joy at 6 p. m. The evening will be devoted to a dance in the high school from 8:30 to 11:45 p. m.

The final session Saturday will begin with the celebration of Holy Communion at 8:30 a. m. with Rev. Watts the celebrant and Rev. Hayward, formerly of Mount Joy, the assistant. The closing meeting will be held in the high school building at which time reports from groups will be given and a summary of the findings made. The final meeting of the group will be at dinner in the high school at noon.

List Committees Members of the host church and Fellowship serving on the committees are as follows: Rev. Watts, general chairman; Mrs. W. J. Watts, program; Richard Dillinger, registration; Robert Buller, hospitality; Winfield Hendrix, publicity and fellowship; Brammel Tryon, finance; Mrs. Thomas J. B. Brown, decorations; Carl Peifer, properties. Charles S. Pennell, president of the Mount Joy Fellowship, will make an address of welcome at the opening session.

The Officers Officers of the diocese are: William O. French of Harrisburg, president; Helen J. Chippy of York, first vice president; Robert Buller of Mount Joy, second vice president; Ellsworth Chandlee of Harrisburg, recording secretary; Frederick McCutchen of Mount Alto, treasurer;

BEAUTY AND MUSIC AT THE FAIR



NEW YORK—Ballet on land and water will thrill visitors to the New York World's Fair opening in April 30. In the Marine Amphitheatre which seats 10,000 persons, Eleanor Holm (inset), Olympic swimming and stage star, will head a cast of 100 girls in Billy Rose's Aquacade ballet. Two hundred others will dance on the stage. The show's production will cost \$1,000,000, according to Grover A. Valen, President of the Fair.

JUST IN CASE YOU HAVE A FIRE PHONE 186 YOU ARE ROBBED PHONE 195 YOU WANT RESULTS PHONE 41-J THE BULLETIN WANTS ADS.

THE-AWFUL PRICE YOU PAY FOR BEING NERVOUS

Check Below And See If You Have Any Of The Signs Quivering nerves can make you old and haggard looking, cranky and hard to live with—can keep you awake nights and rob you of good health, good times and jobs. Don't let yourself "go" like that. Start taking a good, reliable tonic—some made especially for women. And could you ask for anything whose benefits have been better proved than world-famous Lydia E. Pinkham's Vegetable Compound? Let the wholesome herbs and roots of Pinkham's Compound help Nature calm your shrieking nerves, tone up your system, and help lessen distress from female functional disorders. Make a note NOW to get a bottle of this time-proven Pinkham's Compound TODAY.

NORGE You have not seen the latest in Refrigerators unless you have seen the New C/M Synchron. Call For a Demonstration. BRUBAKER'S DEPARTMENT STORE TIME TO GET... an Electric Refrigerator YOU CAN'T AFFORD TO BE WITHOUT IT! The play-time season of the year is here.....but so is the real danger season on perishable foodstuffs. Guard your family with safe Electric Refrigeration. The savings in adequate Refrigeration alone will soon pay for your Refrigerator. PENNSYLVANIA POWER & LIGHT COMPANY AND YOUR LOCAL REFRIGERATOR RETAILER "Don't miss the Modern Electrified Farm Exhibit at the World's Fair." LESTER E. ROBERTS Kelvinator Electric Appliances Phone 41-M and 22-J MOUNT JOY