

SHERIFF SALES

REAL ESTATE! To be held FRIDAY, NOVEMBER 12, 1937 At 2:00 o'clock P. M. By virtue of several writs of Fieri Facias and Levari Facias issued out of the Court of Common Pleas, Lancaster County, Pa., and to me directed, I will expose to sale by public vendue or outcry in Court Room No. 2, at the Court House in the City of Lancaster, Pa., the following described real estate, to wit:

and one-half story dwelling houses, known as Nos. 201 and 203 West James Street. Beginning at a point the north-west corner of North Water and West James Sts., thence extending northwardly along the west side of North Water St. forty-nine feet, nine inches to property now or about to be conveyed to Henry Long; thence westwardly along said property of Henry Long, twenty-nine feet to property of J. C. Blackburn; thence southwardly along said property of J. C. Blackburn, forty-nine feet, nine inches to West James St.; thence eastwardly along the north side of West James St., thirty feet, three inches to North Water St., the place of beginning. Seized and taken in execution as property of Dallas W. Shreiner.

Religious News In This Community

NEWS PERTAINING TO ALL THE CHURCHES IN MT. JOY AND THE ENTIRE SURROUNDING COMMUNITY
Kraybill's Mennonite Church 9:00 Sunday School.
Donegal Presbyterian Church Rev. C. B. Segelken, D.D., Pastor Church School 9:30. Amos R. Gish, Superintendent.
Reformed Mennonite Church Landisville There will be services next Sunday morning at 10 A. M.
Trinity Lutheran Church Bible School 9:30 A. M. Morning Worship 10:45 A. M. Vespers 7:00.
Mount Joy Mennonite Church 9:00 Sunday School. 7:30 P. M. Preaching. Friday Evening 7:30 Bible Study.
Mt. Joy Methodist Episcopal Church Rev. C. Lyle Thomas, Minister 9:30 A. M. Church School. 6:45 P. M. Intermediate League. 7:30 Evening Worship. "The Place of Sustained Living."
First Presbyterian Church Rev. C. B. Segelken, D.D., Pastor Church School 9:30. F. B. Walter, Superintendent. Morning Worship and Sermon 10:30. Evening Worship and Sermon 7:30 Mid-week service Wednesday 7:30.
Zion Lutheran Church Landisville, Pa. Rev. William L. Ziegenfus, Pastor Sunday Church School, 9:30 a.m. Worship and Sermon, 10:30 a.m.
United Brethren Church, Florin, Pa. Rev. I. W. Funk, Pastor Sunday School 9:30. Morning Worship 10:30 A. M. Sunday evening service 7:15 P. M. Prayer meeting Thursday evening 7:30 P. M.
Church of God Landisville, Pa. A. P. Stover, D. D., Pastor Morning Service 10:30 A. M. Church School 9:15 A. M. Evening Service 7:30 P. M. C. E. Societies 6:45 P. M.
Church of God Rev. G. F. Broske, Minister Sunday School at 9:30. Morning Worship at 10:30. C. E. Society at 6:30. Evening Worship at 7:30. Prayer Meeting Wednesday evening 7:45 P. M.
St. Mark's United Brethren in Christ Rev. O. L. Mease, S. T. D.; D. D., Pastor Sunday School at 9:00. Morning Worship at 10:15. Young People's Assembly at 6:30 P. M. Evening Worship at 7:30. Prayer meeting on Wednesday at 7:30.
St. Luke's Episcopal Church Rev. Albert K. Hayward, Rector October 24, 1937, 22nd Sunday after Trinity 7:30 A. M. Celebration of the Holy Communion. 9:15 Church School. 10:30 Morning Prayer and Sermon. 7:00 P. M. Subject: "The Importance of Joy in Our Worship, Our Daily Living." "One important test of a man's religion is how well it enables him to get along with others."
Trinity Evangelical Congregational Church Rev. Clarence C. Reeder, Minister Wednesday:— 4:15 Mission Band. 7:30 Prayer Meeting. 8:30 Official Board. Sunday:— 9:30 Sunday School. 10:30 Morning Worship. "Does the World Need Temperance?" 6:45 K. L. C. E. 7:30 Evening Worship. "Equality of Love."
Salunga Methodist Episcopal Church Rev. C. Lyle Thomas, Minister 9:30 A. M. Church School. The Church School celebrates Rally Day, planning for special speaking, singing, and recitations. Rev. Richard Jones, now of Wyoming Seminary, and a former pastor, will be the speaker at Church

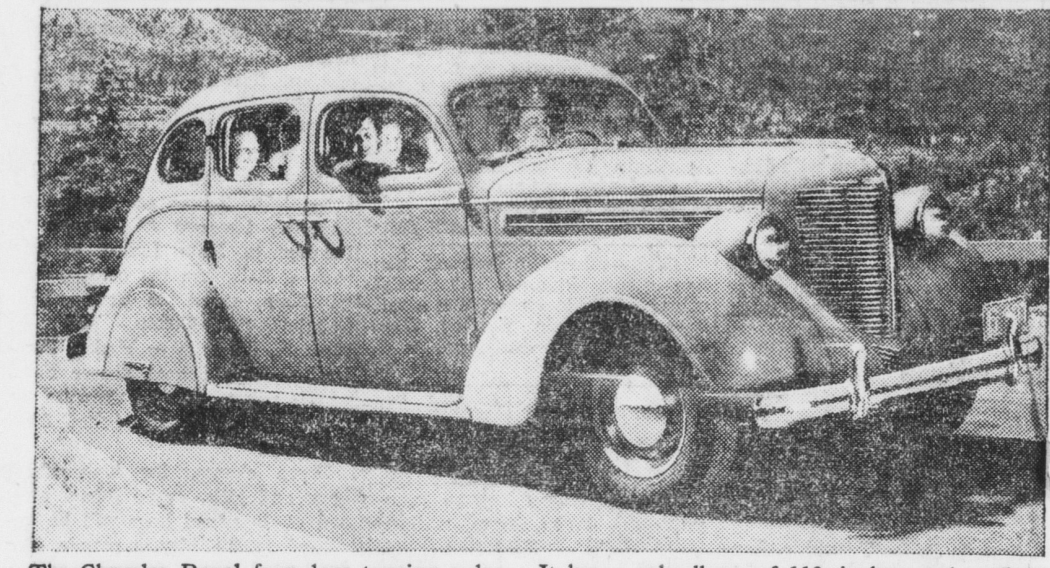
PROF. AND MRS. WELLS WILL RENDER SACRED CONCERT
The Salunga Methodist Episcopal Church and the surrounding communities are having a real treat offered to them on Wednesday evening, Oct. 20, when Prof. and Mrs. Kenneth Wells, of the Non-Sectarian Tabernacle of Philadelphia, will render a sacred recital at 7:45. Mr. and Mrs. Wells are radio singers, and respected as among the finest gospel singers of America. Prof. Wells has a private studio in Philadelphia, teaches in a school at the same place, and is director of music at the large tabernacle. Prof. Wells will sing some of his own compositions, as well as other favorite gospel songs. It promises to be an hour of inspiration through the message of song. Admission is free; a silver offering will be taken for the singers.
Our Card Basket For Past Week
Mount Joy was well represented at the Ephrata Farm Show last week end. Mr. and Mrs. Charles DeLong, of Philadelphia, were in town on Sunday. Mrs. John Charles and son Eugene, spent the weekend at Lewis town. Abner Weaver and Jackie Garber enjoyed an auto trip to Franklin County Sunday. Misses Pauline and June Risser spent the weekend with Mr. and Mrs. Charles Zeller. Mr. and Mrs. Martin Ginder of East Petersburg were also Sunday guests of the Zellers. Miss Dolly Lauer and Mr. Preston Price, of Harrisburg, spent Sunday at the editor's home. Mr. and Mrs. Sam Snyder north of town, were Sunday guests of Mr. and Mrs. Frank Stark. Miss Helen Phillips attended a shower in honor of Miss Mildred D. Barr, of Quarryville. Mr. and Mrs. John Gusler and family and Miss Doris Martin, all of Marietta were Sunday guests of Mrs. F. Leiberber. Mrs. George Halleib and children George, Marlene and Joan, spent the weekend at Ephrata as the guests of the former's sister. Mrs. Bertie Hershey, daughter Veda, and son, Jimmy, of Cone-wago, were Wednesday guests of Mrs. Fred Leiberber. Mr. and Mrs. George Fleisher, of New Bloomfield, called on friends in town Saturday. They were accompanied home by the former's mother who had been visiting her sister, Mrs. Reist, on Marietta St. Mr. and Mrs. Geo. Groff and daughter and Mrs. Sadie Mateer autoed to a camp in Center County Sunday where "Sixty" looked over the deer hunting prospects for this Fall. They also called on County commissioner Newton Stettler of Snyder County.
LOYAL SONS S. S. CLASS MET LAST EVENING
The Loyal Sons Sunday School Class of the United Brethren Church held their monthly class meeting last evening in the home of James Schneider, 125 East Main Street. In the business session the class discussed final arrangements for the exhibit and elected officers which resulted as follows: President, Victor Engle; Vice President, Lester Hostetter; Secretary, James Sheaffer; Treasurer, Clinton Eby; Program Committee, Cloy Hoffer; Assistant Teacher, Robert Hostetter. After the business meeting refreshments were served to the following: Clinton G. Eby, Cloy Hoffer, Jay Shirk, Warren Bentzel, John L. Brubaker, Harry Hendricks, James Sheaffer, Alvin Bigler, Clay Stauffer, Victor Engle and James Schneider. The November meeting will be held in the home of Jay Shirk, Stauffertown.
CONTROL FRUIT DISEASE
Among the many problems of the modern fruit grower is the matter of disease control. Disease causes loss through destruction and by lowering the market value of the fruit. Penn State plant pathologists recommend a complete spray program to produce clean fruit.
Subscribe for The Bulletin.
School. 10:30 Morning Worship. Our guest speaker, on this Rally Day, will be the Rev. Richard Jones. Let's rally around the cause of the Church and the cause of Christ.

Mortuary Record For Past Week

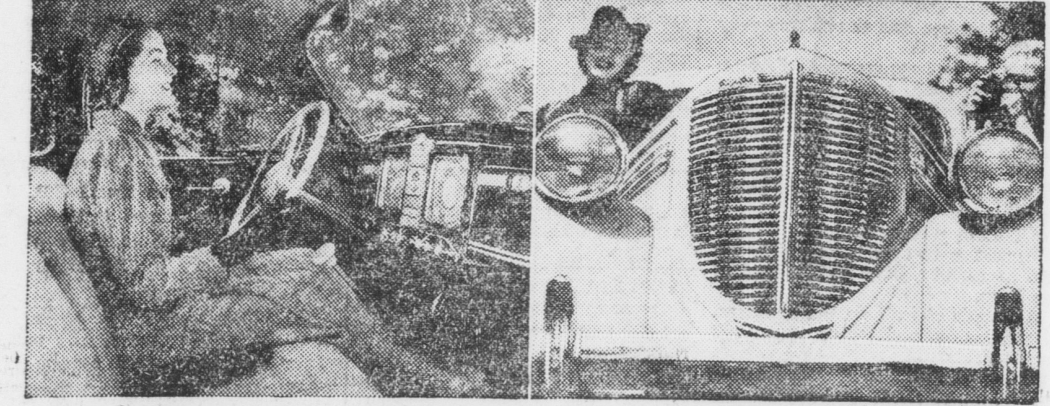
(From page 1)
ty-seven, died of a heart attack at 2 A. M. Sunday, at the home of Malinda Myers, of Florin with whom she resided. She has no survivors. Services were held this morning at 9:30 A. M. at the Cross Roads church. Interment in the adjoining cemetery.
MRS. AMANDA A. HERR
Mrs. Amanda A. Herr, ninety, Salunga, died suddenly at the home of her son, Ira M. Herr, Salunga, at 1:30 p. m. Friday, of a cerebral hemorrhage. Dr. J. S. Kendig, of Salunga, deputy coroner, was called, and pronounced death due to a cerebral hemorrhage. She was a daughter of the late Bernard and Mary Stoner Mann. She was a member of the Salunga Brethren church. She was the last of her family. She is survived by two sons, Ira M. Salunga, and Christian M., Mt. Joy R. D. 1. Six grandchildren and six great-grandchildren also survive. Services were held Monday, at the home of her son, followed by further services in the Salunga Brethren church. Interment in the adjoining cemetery.
ANDREW C. WEIDMAN
Andrew C. Weidman, seventy-four, died at the home of his daughter, Mrs. Irvin Lankhuff, Pleasure road, near Lancaster, of a complication of diseases after an illness of six weeks. He was born in Mannheim township, a son of the late Peter and Amelia Hornberger Weidman and was a resident of our borough for a number of years. He is survived by his wife who was Elizabeth Grove before marriage; these children: Harry G. Mount Joy; John G., East Petersburg; Nellie H., wife of James B. Richardson, Mary E., wife of Frank S. Carpenter, Lillian M., wife of Harry J. Ochs, all of this city; Florence B., wife of Charles B. Henry, Emma; and Alice A., wife of Irvin Lankhuff, Sr., at whose home he died; also three brothers and a sister, Harry and Dallas Weidman, of Salunga; and John H. Weidman, and Mrs. Emma Young, of Lancaster; also thirty-six grandchildren and five great grandchildren. Services were held Saturday afternoon with interment in the Greenwood cemetery.
Death Ends
(From page 1)
dent of the local Rotary club. He also served on the Inter-Missions Board of the Lutheran church for a number of years. He was stricken ill in the latter part of August after returning from his vacation, and after preaching for several weeks thereafter, was forced to remain in the parsonage. He is survived by his wife, Ella Baker Kercher, formerly of Norris-town, and the following brothers and sisters: Edwin Kercher, of Philadelphia; Robert Kercher, of Shillington, and Annie, wife of I. W. Fegley, of Harrisburg. His body will lie in state in the church from 6 to 9 p. m. Friday and from 9:30 to 11 a. m. Saturday. Services will be held from the church at 11 a. m., Saturday with interment in the Augustus cemetery, in Trappe, Pennsylvania. The Rev. Dr. Ernest Platteicher, president of the Ministerium, of the Rev. Frank Croman, of Elizabeth-town, president of the Lancaster conference, and the Rev. M. J. Bieber, of Philadelphia, a former pastor of the local church, will officiate at the funeral.
Nicholas Vasilieff Siberian Singers
Elizabethtown College Elizabethtown, Pa. Offers Outstanding Musical Event October 26, 8 P. M. In the Auditorium Gymnasium Admission, 50 cents
The Siberian Singers, internationally famous Russian male choir, will present a program consisting of some of the most famous liturgical numbers, folk and gypsy songs. They appear in their colorful Cathedral robes and folk costumes. Nicholas Vasilieff, the Director, is recognized as one of the most talented young musicians in the country. His beautiful tenor voice is being heard weekly from coast to coast on the National Broadcasting Company's program.

B. AND L. DIRECTORS MET LAST WEDNESDAY NIGHT
The regular monthly meeting of the directors of the Mount Joy Building and Loan Association was held last Wednesday evening in the directors room of the First National Bank and Trust Co. The following were present: Messrs. R. Fellenbaum, Dr. E. W. New-comer, J. Willis Freed, Elam Bomberger, Henry H. Eby, Grant Gerberich, Christ Walters and Jno. E. Schroll. The secretary reported receipts for September were \$2,415.78. Several new loans on local real estate were applied for and granted. The Association invites first mortgage loans such as these and will cheerfully consider all applicants.
Man Found
(From page 1)
said that Swords, who was driving north, apparently failed to negotiate a curve in front of the farm tenanted by Arthur Miller. The marks indicated the car swerved off the macadam, into a ditch and then struck a tree stump, about six feet off the road. The impact caused the machine to turn over five or six times. Policeman Gerhart said. It came to a halt on its side, facing east-west in the middle of the road, 148 feet from the curve. Barney Bessinger, Lancaster, a passing motorist, first discovered the wrecked car, its lights still burning. He stopped, but when he failed to see anyone about the car, he summoned R. E. Woods, special officer, of Lancaster township. Woods, failed to find anyone in or about the car, was later joined by Arthur Miller, who was the first to discover Swords pinned beneath the wreckage. The right front and rear of the machine was damaged and the top was crushed in. Deputy Coroner Fred Koser, Landisville, said that Swords apparently was killed instantly and issued a certificate of accidental death.
PUBLIC THANK-OFFERING SERVICE
The Women's Missionary Society of Trinity Lutheran Church will hold its annual Thank-Offering Service in the Church Sunday Nov. 7th at 7:00 P. M. Mount Joy's Community Exhibit will be held Oct. 21, 22, 23.

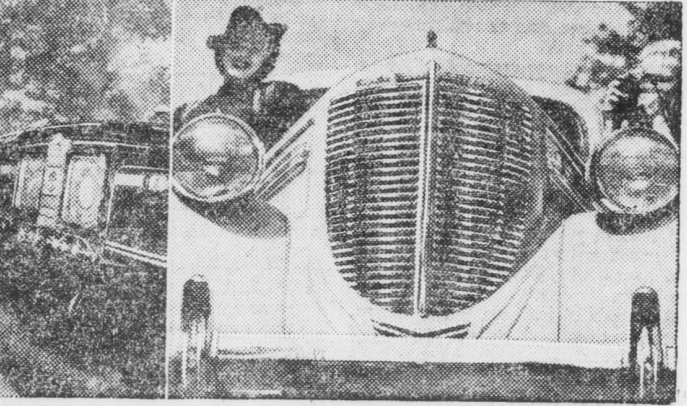
Chrysler Offers Two New Cars For 1938



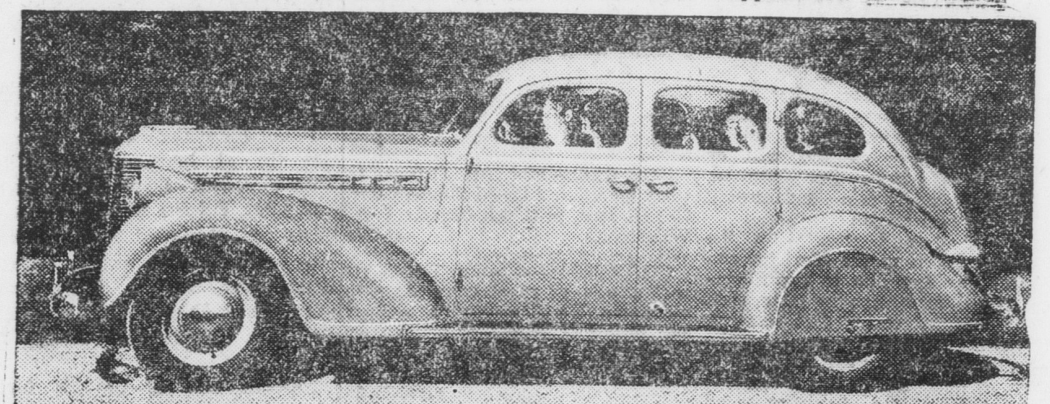
The Chrysler Royal four-door touring sedan. It has a wheelbase of 119 inches and a Gold Seal engine developing 95 horsepower. A completely new front end treatment and many new features make it the finest car in the price class that Chrysler has ever offered.



Interior of the driver's compartment of the Chrysler Imperial. It has an entirely new instrument board, a new type of steering wheel, a new position for the emergency brake handle and other improvements.



The attractive front end of the Chrysler Royal. This car has been completely restyled with new radiator, fenders, hood and headlamps, giving it exceptional beauty and sleekness of appearance.



The Chrysler Imperial four-door touring sedan. On a wheelbase of 125 inches and with an engine developing 110 horsepower, this car offers remarkable performance with good economy. It brings luxurious motoring into the moderate price field.

appearance, greatly refined and beautified interiors, larger and more powerful engines of improved design, longer wheel bases, larger hydraulic brakes and a score of mechanical refinements and improvements feature the two new cars comprising the Chrysler line for 1938. These cars again are designated as the Chrysler Royal and Chrysler Imperial respectively. Although the Airflow will not be continued in the same form as produced last year, the company makes clear that it has not been dropped, since the Airflow engineering features and principles of construction have been incorporated in all Chrysler models. Chief among these are the scientific weight distribution and Airflow springing that have produced such remarkable riding qualities in Chrysler cars. The owner who desires seven-passenger capacity, in a heavy and luxurious car on an exceptionally long wheelbase will find it in the Custom Imperial. The Chrysler Royal, with which Chrysler again will bid for business in the low-price field has been increased in wheelbase from 116 to 119 inches. Whatever the change in the price of this model it will preserve its relative competitive position. It comes in ten body styles as follows: Four-door sedan, four-door touring sedan, brougham, touring brougham, convertible coupe, convertible sedan, rumble seat coupe and seven-passenger sedan and sedan-limousine on a special 130-inch chassis. Wheelbase of the Imperial has been raised from 121 to 125 inches. This car, as the company expresses it, gives "remarkable performance at moderate price". It comes in six body styles, namely four-door touring sedan, touring brougham, convertible coupe and rumble seat coupe. The Custom Imperial now has a wheelbase of 144 inches, four inches more than last year's corresponding models although the overall length remains the same. It comes in three body styles, seven-passenger sedan, seven-passenger sedan-limousine and five-passenger sedan. In size, power and beauty and completeness of appointments it is Chrysler's conception of the ultimate in luxurious motoring. Except for the difference in size the cars are uniform in appearance, purposefully made so in order that a Chrysler of whatever body style may be readily recognized. The most startling and pleasing change is found in the front end treatment. The Chrysler Gold Seal engine, introduced last year on the Chrysler Royal has been improved in that car and introduced in larger dimension on the eight-cylinder Chrysler Imperial. The engine of the Royal has been given 1/2 inch more stroke, which brings its cubic displacement up to 241.5 cubic inches. Cylinders are 3 1/8 bore and 4 1/2 inches stroke. At 3600 revolutions the engine develops 95 horsepower using the standard cast iron head and a 6.2 to 1 compression ratio. With a special aluminum head and 6.5 to 1 compression ratio, it is rated at 102 horsepower. Lengthening of the stroke has resulted in an improvement in torque, which means better performance at the speeds most used by the average driver and better acceleration. A new crankshaft with four main bearings 2 1/2 inches in diameter and nine counterweights, together with an improved impulse neutralizer, produces remarkable smoothness. A new camshaft with earlier opening and closing of the intake valves also is a feature of the engine. Combined with the large ports and valves it adds to efficiency and smoothness. The full-length water jacket with the oil gallery contacting directly at its lower end gives efficient cooling to both cylinders and oil. Valve seat inserts of special heat-resisting steel insure perfect valve seating throughout a long period. The new Gold Seal eight-cylinder engine designed for the Imperial has a 3 1/4 inch longer stroke than last year's engine and its cubic displacement has been raised to 298.6 cubic inches with a 3 1/4 bore and 4 1/2 stroke. It develops 110 horsepower at 3400 r.p.m. with the standard cast iron head and compression ratio of 6.2 to 1. With a special aluminum head and 6.5 to 1 compression ratio the horsepower is raised to 115. An even higher compression ratio of 7.4 to 1 also will be offered as optional. Although the horsepower is rated the same as last year when an aluminum head was used, it is developed at lower engine speed and with greater torque. The Custom Imperial engine remains dimensionally unchanged a 3 1/4 inch bore, 4 1/2 inch stroke and 323.5 cubic inches displacement. It develops 130 horsepower with the standard aluminum head and 6.5 to 1 compression ratio. An optional head with 7.45 to 1 compression ratio raises the horsepower to 138. The net result of the engine changes will be an improved performance without the sacrifice of any of the economy for which Chrysler's were noted in 1937. The 1937 Royal in the hands of owners encountering all kinds of driving conditions was giving from 18 to 24 miles per gallon of gasoline. This will be equalled by the 1938 engine, Chrysler engineers are confident.

See The NEW CHRYSLER CARS At The Mt. Joy Community Show - Exhibited By - JOHN G. LONGENECKER Mount Joy, Penna.

Oh, All the curling... Sat used for a car longer... At teach follow we w... A P circles many... A tr Doneg "Coul bite" answer my do... Yest Owing to flatt goah, t your r landia recipe. my app... Two their f "My br and hi follow? matter- struck... A do, to ask take the sign on And th But I d asked: explaini neath it... Ran i bellowe fly swa said: "a beer saying: flies."... Asking "What goes on compani answe here... Reprin ard, a ke you ach by c said: "O show w use... A sce when g town rec blucro... A sale line of r ment Ste