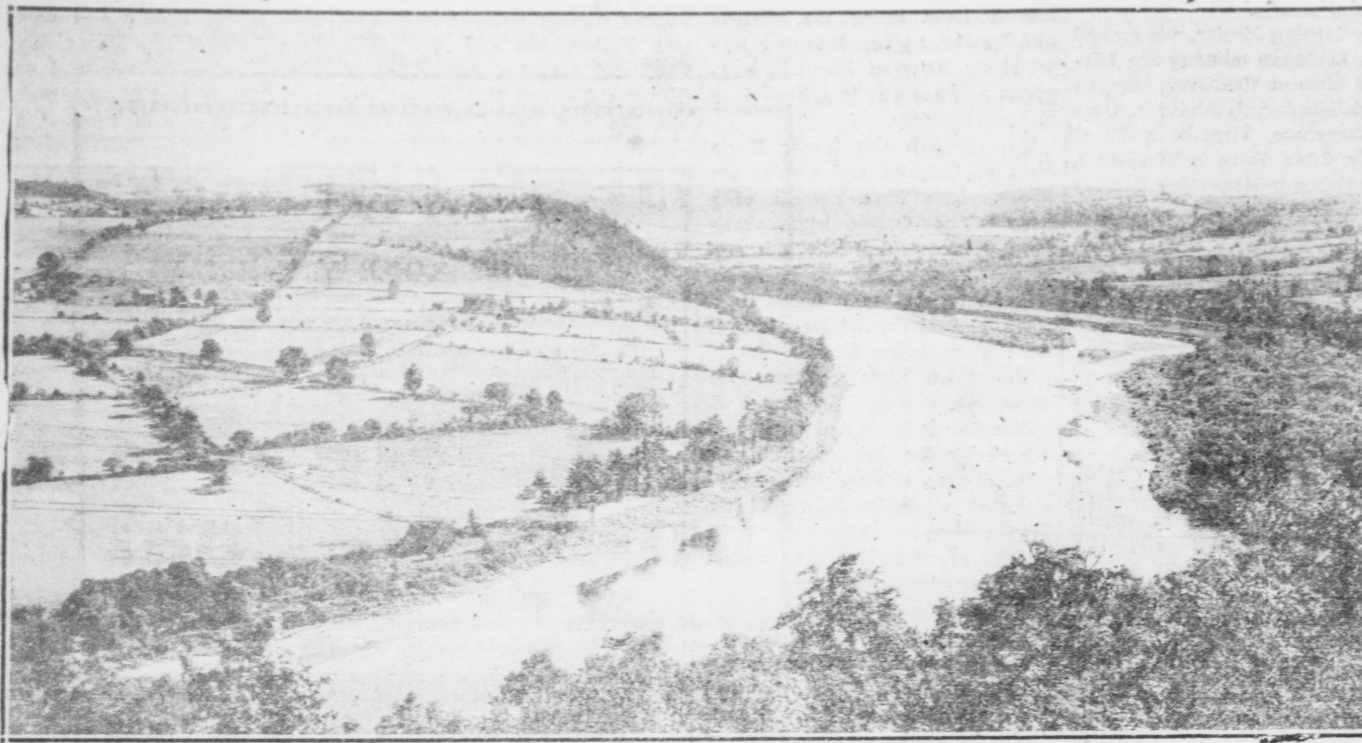


Susquehanna's Majestic Sweep Fills Camera's Eye



This expansive view shows the Indian-named River of Many Lies as it rounds a bend of neat farm land in Bradford county. The scene is looking north from U. S. Route 220. Photo from Penna. Publicity Commission.

NEW HIGHWAYS AID HARVEY'S LAKE TOURS

Harrisburg—Highway and sidewalk improvements at Harvey's Lake, planned by the State Highway Department, will enhance this resort, officials of local organizations have reported to the Pennsylvania Publicity Commission.

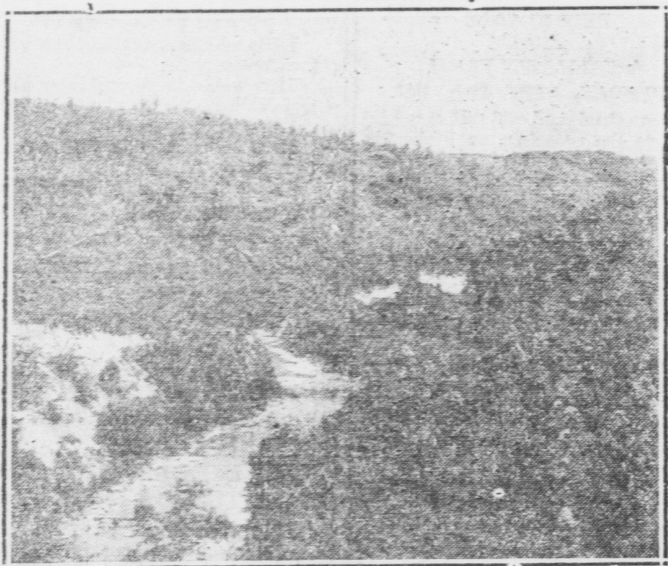
Stone bases will be laid on three roads, drainage facilities will be bettered, and sidewalks will be raised at several bridge approaches, the department announced.

A natural lake formed by glacial action thousands of years ago, Harvey's Lake has an area of 648.5 acres, an average depth of 50 feet, and a maximum depth of 102 feet. It is estimated to contain 7,733,000,000 gallons of water.

Situated among wooded hills at an elevation of 1256 feet, Harvey's Lake has found favor as a summer resort for many years. The lake is State-owned and well-stocked with a variety of fish.

A road more than eight miles long circles the lake, giving easy access to every point.

Thar's B'ar in Them Thar Hills, Boys!



A sample of rugged territory of Clearfield County where hunters later this year will seek big game. Scene includes Black Moshannon Creek along State Route 53. Photo from Penna. Publicity Commission.

Creeley chickens, the favorites of the earliest Pennsylvania settlers, are believed to be extinct.

Many Nova Scotians were among the first lumbermen in Cambria county, Pennsylvania.

RELICS OF ANCIENT RAILROAD RECOVERED

Stone railway ties once part of the Old Portage Railroad between Hollidaysburg and Johnstown were uncovered recently by workmen reconstructing the William Penn Highway in Blair county.

Nearly 25 of the 100-year-old ties were found several feet below the ground surface in an excavation required to keep the new road smooth and level.

The ties, each about a foot square, were perfectly preserved by the protecting earth which had covered them since the road was dismantled about 1858. Some of the ties even retained the iron pins which carried the light rails of the line.

Only a few days before, workmen on the project had found buried log cribbing used to support the pioneer railroad near the same point.

Scene of the finds is just west of Duncansville, Blair county, along William Penn Highway, Route No. 22. A rare skew arch bridge perfectly preserved and a monument telling the history of the Old Portage Railroad can be seen from the same highway only a few miles to the west.

This Section's Numerous Weddings

(From page 1)

Jury, of Millersburg, and Miss Betty Lentz, sister of the bride, as bridesmaids. Sara Smithgall, of Lancaster, and Carolyn June Hevel, of Middletown, cousin of the bride, were flower girls.

The best man was B. Frank Eshelman, of Landisville, and Eugene Myers, step-brother of the bride, were ushers. Mrs. Henry Lutz, of Baltimore, aunt of the bride, presided at the organ and Warren Ervin sang "De-cause" and "This Is My Happy Day."

The bride wore a gown of white brocade satin with a train and her veil was fastened in a coronet of seed pearls and orange blossoms. She carried white roses, lilies of the valley and orchids.

Miss Brock wore apricot satin made with a jacket and the sleeves and skirt were trimmed in corded satin. She wore a flower turban with a veil and carried token roses and lilies of the valley. Miss Jury wore American beauty satin with a quilted jacket and matching turban with velvet flowers and a veil and carried roses and gypsophila. Miss Lentz's gown was of king's blue satin with quilted jacket and matching turban with a veil and she carried Johanna Hill roses and delphinium.

Sara Smithgall's dress was of soft blue georgette and she wore a bonnet to match and carried a colonial bouquet and Carolyn June Hevel wore flowered pink georgette and a matching turban with a veil and she carried Johanna Hill roses and delphinium.

Sara Smithgall's dress was of soft blue georgette and she wore a bonnet to match and carried a colonial bouquet and Carolyn June Hevel wore flowered pink georgette and a matching bonnet and carried a colonial bouquet. The bride's mother wore a gown of old rose with jacket appliqued in blue taffeta and dark blue accessories

Now is the Time- to see these money-saving KELVINATOR VALUES



Built to save you More than it costs

Yes—a Kelvinator pays for itself while you are buying it. Come in and we will prove that a Kelvinator in your home will actually save more money each week than it costs each week to buy it. In addition when you choose a Kelvinator you are sure of getting everything you want in a refrigerator—beauty—dependability—real refrigerating power—and every worthwhile convenience feature.

Twice THE COOLING CAPACITY Half THE RUNNING TIME

CUBIC FT. MODEL NOW ONLY \$184.95

ONLY KELVINATOR GIVES YOU ALL THESE FEATURES
Kelvinator Thermometer • Interior Light • Vegetable Crisper • Rubber Grids In All Ice Trays • Certificate of Low Operating Cost • 5-Year Protection Plan.

SEE THIS SENSATIONAL VALUE TODAY

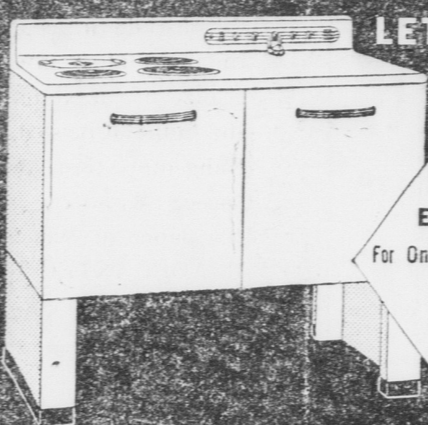
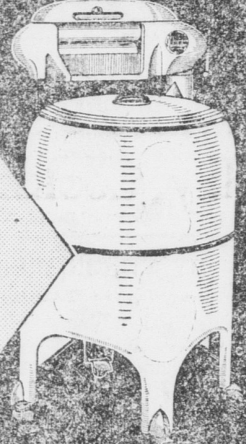
YOU CAN NOW BUY A PLUS-POWERED KELVINATOR FOR AS LITTLE AS 90¢ A WEEK

THE GREATEST WASHER VALUE ON THE MARKET TODAY

KELVINATOR WASHERS ARE PRICED FROM \$54.50 AND UP

Never before have you seen a washer like the new Kelvinator. It has unexcelled beauty—and it's new from top to bottom—inside and out. A new wringer—a new agitator—a new mechanism—everything. And the price is so low that there's no reason why you should not enjoy its advantages and economies. See it today. You'll say it's the greatest washer value you ever saw.

NEW EXCLUSIVE PRESSURE-ATOR WRINGER AND FIN-FLEX AGITATOR



LET US PROVE THAT YOU CAN NOW AFFORD TO COOK Electrically!

THIS BIG FAMILY-SIZE ELECTRIC RANGE For Only \$172.95

In addition to its gleaming white beauty this low priced Kelvinator Range is designed to save you time, produce better results and use less current. Come in and see its improved Single Unit Oven—New High Speed Surface Units—its money saving Scotch Kettle—Giant Broiler and a host of other new features. Get the low-cost facts about Kelvinator electric cookery today.

LOW PRICED EASY TO BUY CLEAN • COOL AND ECONOMICAL

Wanted Six Used Kelvinator Electric Refrigerators, Will Give Exceptionally Good Prices For Same On Exchange For New Kelvinators

LESTER E. ROBERTS

Phones 41M & 22J

Mount Joy, Pa.

and a corsage of tailsman roses. Mrs. Koser wore black crepe and a corsage of cream roses. The bride's grandmother, Mrs. Annie Kersetter, wore a black crepe and matching accessories. The church was decorated in palms, ferns and white gladioli. After a wedding trip to New York and Canada they will reside in Lancaster, where the bridegroom is a funeral director. For her going-away gown the bride wore a black wool suit with a satin blouse and a black velvet Duchess of Windsor hat with a veil. Her corsage was of gardenias.

HOW ARE YOUR SHOES? DON'T WAIT TOO LONG BRING THEM IN CITY SHOE REPAIRING CO. 30 SOUTH QUEEN STREET LANCASTER, PENNSA.

HIGHEST PRICES PAID FOR Dead Animals BY GEO. LAMPARTER'S SONS Rockland St., Lancaster, Pa. TELEPHONE LANCASTER 24157

Order Coal Today! LEEDOM coal is low in ash and high in heat value. VALUABLE folks insist on LEEDOM coal. ALSO PURINA AND ESHLEMAN'S CHICK FEED FERTILIZER HARRY LEEDOM Phone Mt. Joy 114 For Prompt Delivery

AMERICA'S LEADER AT 4 for 10¢ PROBAC BLADES

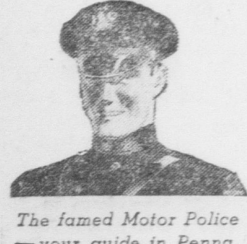


Route 38 at Emlenton at County Line

PENNSYLVANIA

PARADISE in the Fall

There's nothing in this wide world so perfect as Autumn in your own state. Breathtaking views of mountain slopes, rivers, lakes and rich valleys—30,000 miles of fine highways, enough to go one and a fifth times around the world—Pennsylvania has everything! Get out on the roads this Fall—plan a few trips away from home. Every spot in the state is within a day's easy drive, and everywhere you go, you'll meet the Pennsylvania brand of fine food and hospitality. See your own state at its Autumn best—east, west, north, south—all of it!



The Jamed Motor Police—your guide in Penna.

GEORGE H. EARLE GOVERNOR OF THE STATE OF PENNSYLVANIA

PENNA. STATE PUBLICITY COMMISSION HARRISBURG, PA. WARREN VAN DYKE, CHAIRMAN



General Meade's Headquarters Gettysburg Battlefield



Write for illustrated Road Map and complete Traveler's Guide Book.

