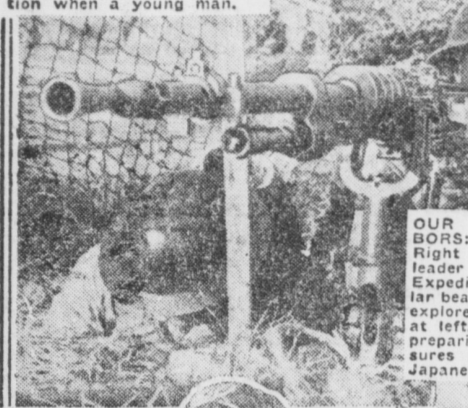
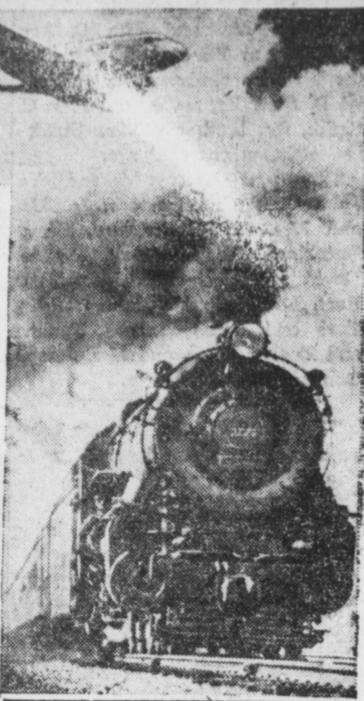


CAMERAGRAPHS



EDDIE RICKENBACKER (left) visits his alma mater, President Ralph E. Weeks of the International Correspondence Schools, Scranton, Pa., welcomes the famous war ace and leader in the aviation industry upon the occasion of his recent visit to the institution with which he enrolled for technical instruction when a young man.

AIR EXPRESS: Lusty offspring of 88-year-old Railway Express Agency, 10 years old September 1, flies every work-day at 3 miles a minute, 2,000 shipments, weighing 7 tons on 4,225 miles of air routes between all U. S. and Canadian airport cities and by coordinated air-rail service between all off-airline cities.



OUR FOREIGN NEIGHBORS: At war and in peace; Right is O. J. Schmidt, leader of the Soviet Polar Expedition, playing with polar bear cubs attached by the explorers, while in the photo at left, is a Chinese soldier preparing to take lethal measures against the invading Japanese.



IN HOT WEATHER OR COLD: Joan Blondell, taking a sun bath, is easy to look at.

"WE'LL TAKE GRAPEFRUIT JUICE!" Champagne was the order of the day when they danced at the Paris Exposition a few weeks ago, but Rockettes were drinking Florida grapefruit juice straight from the can when the candid cameraman stole this picture in dressing room of Radio City Music Hall in New York.

The Affairs In General Briefly Told

(From Page 1)
at Lancaster last week was John Kraybill of Florin.

one day last week.
Mrs. Kathryn Douglas, 40 of Marietta, sustained a fractured knee in a motor accident Sunday.
Harry Groff, of Columbia, swam the Susquehanna river, a distance of 11 miles in 45 minutes.
A large truck loaded with peaches upset on the highway east of Landisville Wednesday afternoon.
Harry Howe, 68, Paradise, had his leg broken when a rock rolled on him while at work in a quarry.
Samuel Groff, 18, of Blue Ball, is held responsible for the death of his sister as the result of an auto mishap.
Robert Peters, 19, was killed and

Wm. Nauman, 65, badly injured when a barn they were helping to raze, collapsed.
Barbara K. Esh, 18 months old daughter of Emanuel Esh, Bird-in-Hand, fell down a hay hole and has concussion of the brain.
Jacob G. Wolgemuth is the executor of Lizzie C. Wolgemuth, late of this borough. The estate notice appears in our advertising columns.

SUCCESSFUL ROASTS

The Men's Bible Class of the Evangelical Congregational Sunday school held a very successful corn roast on the Church Lawn on Thursday evening when about sixty mem-

Religious News In This Community

NEWS PERTAINING TO ALL THE CHURCHES IN MT. JOY AND THE ENTIRE SURROUNDING COMMUNITY

Kraybill's Mennonite Church
East Donegal
Sunday School 9:00

First Presbyterian Church
Rev. C. B. Segelken, D.D., Pastor
Church School 9:30. F. B. Walter, superintendent.

Donegal Presbyterian Church
Rev. C. B. Segelken, D.D., Pastor
Church School 9:30 Amos R. Gish, superintendent.

Mount Joy Mennonite Church
9:00 Sunday School
7:30 P. M. Preaching
Friday evening 7:30 S. S. Workers Meeting.

Church of God
Rev. G. F. Broske, Minister
Sunday School at 9:30.
Morning Worship at 10:30.
C. E. Society at 6:30.
Evening Worship at 7:30.

Zion Lutheran Church
Landisville, Pa.
Rev. William L. Ziegenfus, Pastor
Sunday Church School, 9:30 a. m.
Worship and Sermon, 10:30 a. m.

Salunga Methodist Episcopal Church
Rev. C. Lyle Thomas, Minister
9:15 A. M. Church School.
7:30 P. M. Morning Worship.
Rev. Earl J. Creamer, of Lancaster, will be the guest speaker.

Mt. Joy Methodist Episcopal Church
Rev. C. Lyle Thomas, Minister
9:30 A. M. Church School.
There will be no morning worship service.

Trinity Evangelical Congregational Church
Rev. Clarence C. Reeder, Minister
Sunday:—
9:30 Sunday School
10:30 Morning Worship.
7:00 Evensong

Trinity Lutheran Church
Rev. George Kercher, Minister
Bible School 9:30 A. M.
Morning Worship 10:30 A. M.
No evening service.
The church will be closed the last two Sundays in August.

United Brethren Church, Morin, Pa.
Rev. I. W. Funk, Pastor
Sunday School 9:30.
Morning Worship 10:30 A. M.
Sunday evening service 7:15 P. M.
Prayer meeting Thursday evening 7:30 P. M.

St. Mark's U. B. In Christ Church
Rev. O. L. Mease, S. T. D.; D. D., Pastor
Sunday School at 9:00.
Morning Worship at 10:15.
Prayer service on Wed at 7:30.
No evening service.

Church of God Landisville, Pa.
A. P. Stover, D. D., Pastor
Morning Service 10:30 A. M.
Church School 9:15 A. M.
Evening Service 7:30 P. M.
Choir Directress, Miss Evelyn Hiserman.
C. E. Societies 6:45 P. M.

bers attended.
The Mission Band of the Evangelical Church held a doggie roast, on Friday evening. The roast was greatly enjoyed by the many attendants.

THERE'S nothing quite so deliciously "right" for cool September evening suppers as some extra special waffles with the pleasure of a tang of smooth cheese grilled right into the crisp, brown cakes... with a side dish of grilled tomatoes.
If you serve waffles frequently (or only occasionally), you'll welcome the flavor variety found in these

Cheese Waffles
3 cups sifted cake flour; 2 teaspoons double-acting baking powder; 1/2 teaspoon salt; 3 egg yolks, well beaten; 1 cup milk; 4 tablespoons melted butter or other shortening; 1 cup grated American cheese; 3 egg whites, stiffly beaten.
Sift flour once, measure, add baking powder and salt, and sift again. Combine egg yolks, milk, and butter. Add to flour, beating until smooth. Add cheese. Fold in egg whites. Bake in hot waffle iron. Makes five 4-section waffles.
Note: This batter may also be baked on a hot, greased griddle.

Week-End Motoring

State Forest Parks
Pennsylvania Scenic and Historic Commission

Criscrossing the State

Pennsylvania has more than 28,000 miles of improved highways. The Roosevelt Highway (Route 6), the Lakes-to-Sea Highway (Route 322), the Benjamin Franklin Highway (Route 422), the William Penn Highway (Route 22), and the Lincoln Highway (Route 30) stretch across the Keystone State between Ohio and the Delaware River. Routes 18, 19, and 219 cross Pennsylvania in its western area between north and south. Route 220 stretches from Cumberland, Maryland, northwest into New York State at Waverly, N. Y. Route 11 enters Pennsylvania from Hagerstown, Maryland, and via Harrisburg skirts the Susquehanna north and then northeast along the east branch of the Susquehanna, thru Scranton into New York State at Binghamton, N. Y. Route 15 now stretches from Maryland via Gettysburg and Harrisburg along the east side of the Susquehanna River north through Williamsport to New York State, changing to Route 2 in that State and leading to Painted Post, N. Y.

These are the principal highways that crisscross Pennsylvania. They reveal matchless scenery, hundreds of beautiful vacation spots, scores of places teeming with historic lore, and suggest to motorists every type of travel interest.

"I wish I could impress upon our 2,000,000 Pennsylvania motorists what a rich store-house of scenic and historic interest our State really is," says Secretary of Highways, Warren Van Dyke. "Motorists will meet many surprises in mountain beauty and open country landscapes by traveling the thousands of miles of byways forming a gigantic network of our major highway system."

The Pennsylvania State Publicity Commission (formerly the Pennsylvania Scenic and Historic Commission) has a Tourist Information Bureau, offering assistance to motorists in mapping interesting vacation tours within the Keystone State. A scenic and historic map folder and a 128-page booklet, "Pennsylvania has Everything," are two pieces of literature available for free distribution. A letter of postal card addressed to the Commission at 9 N. Fourth Street, Harrisburg, Pennsylvania, will receive prompt attention.

HAMBURG (Routes 22-122) Hamburg, in the beautiful Schuylkill Valley in Berks County, is situated at the junction of the William Penn Highway (Route 22) and Route 122. It is the gateway to Schuylkill Water Gap. Along the Schuylkill River are many landmarks of the old canal, which, in years past, served as the means for transportation of coal from the anthracite region to Philadelphia. This year Hamburg is celebrating the 100th anniversary of the borough's incorporation. A series of events will close with a King Frost Carnival in October.

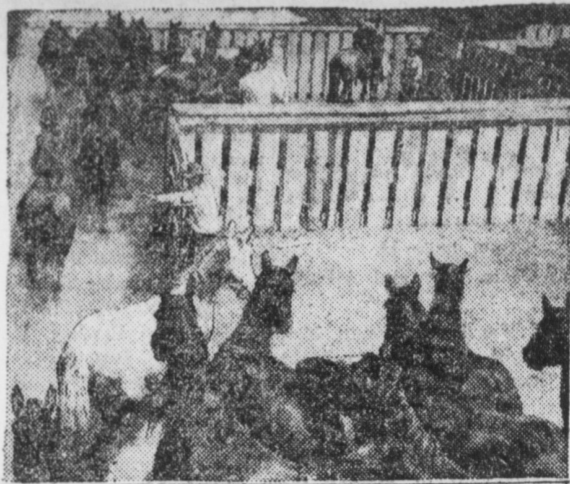
Swiss Watches and Small Wrist Watches Repaired
Prompt Service and Prices Reasonable

DON W. GORRECHT
Mount Joy, Pa.

Electric and Acetylene
WELDING
R. U. TRIMBLE
ELIZABETHTOWN, PA.

HOW ARE YOUR SHOES? DON'T WAIT TOO LONG BRING THEM IN CITY SHOE REPAIRING CO.
30 SOUTH QUEEN STREET LANCASTER, PENNA.

YES WE DO FENDER AND BODY
Straightening
DUCO and DELUX
Painting
Let us estimate your job
HASSINGER & RISSER
MOUNT JOY, PA.



Who Says There Aren't Wild Horses Left?—This herd of wild mustangs has been corralled at Sun Valley for the first major rodeo at this famous Idaho resort. Champion riders of the West will attempt to conquer the steeds during two intense days of competition.

Affairs At Florin For The Week

(From Page 1)
Mr. and Mrs. Omar Kling.
Mr. William White spent the weekend at Maryland.

Miss Jean Moyer, of Harrisburg, is the guest of Mary Dorcas Esheleman, who will accompany her guest home over the week end.

Mr. Enos Wachstetter, Mrs. Annie Wachstetter, Mr. Harry Herr and Miss Stella Wachstetter spent Sunday evening at Manor Camp Meeting.

Wm. Rodgers, Ruth Neuhauser, of Bird-in-Hand, Edgar Rodgers and wife and Patsy McCarty, of Lancaster, were also Sunday guests at Klings.

Mr. and Mrs. Joseph Hostetter, Mr. and Mrs. Clarence Duple, Mr. and Mrs. Irvin Hostetter, and son, Gerald, Mr. and Mrs. Clayton Hollinger, John Esheleman, Samuel W. Longenecker attended the Hollinger Mt. Joy. Those present were: Mrs. John Wittle, Mrs. Park Shetter, Mrs. Lloyd Vogle, Kathryn Wittle, Alverta, Maude and Ethel Buller, Mary Funk, Lillian and Mary Welfley, Robert and Kenneth Nissly and Evelyn Fike.

The ground-breaking service at the Florin United Brethren church for the new Sunday School Chapel was held on Sunday afternoon with a special program. The official board, superintendent of Sunday School, President of Trustee Board, each took a shovel of ground with other members following. The new Chapel will be 40 x 42 feet. A liberal offering was taken.

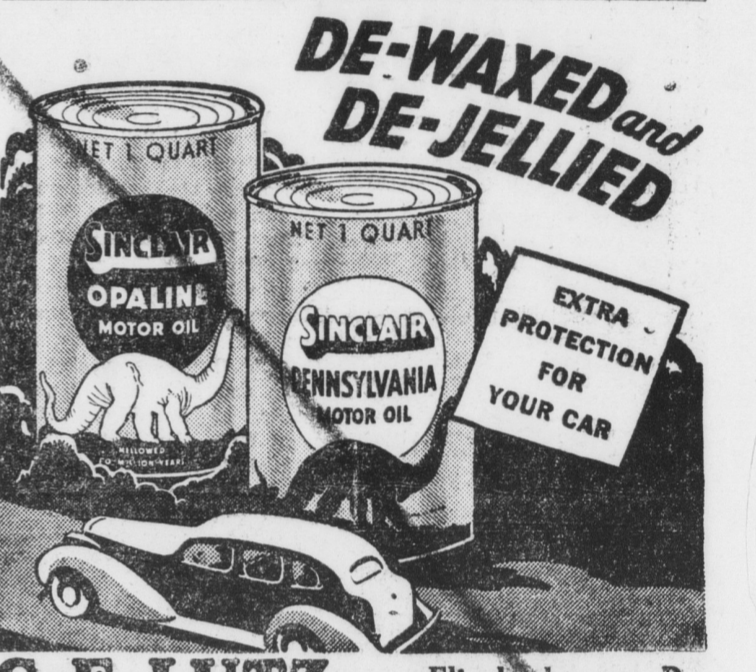
You can get all the news of this locality for less than three cents a week through The Bulletin.

When in need of Printing (anything) kindly remember the Bulletin

I HAVE JUST INSTALLED A **PARAGON MODEL TRU-FIT SHOE STRETCHER**
Newest in the line
Shoes can be stretched LONGER and WIDER
Shoes that are too short can be stretched at least ONE inch
LASTS TO FIT ALL TYPE SHOES

Lincoln Shoe Repair
21 E. Main St. MT. JOY

HIGHEST PRICES PAID FOR **Dead Animals**
BY **GEO. LAMPARTER'S SONS**
Rockland St., Lancaster, Pa.
TELEPHONE LANCASTER 24157
Jan. 27-1f



C. E. LUTZ, Elizabethtown, Pa.
PHONE 217M
DEALERS IN THE SECTION
John S. Bender MOUNT GROVE, PA.
CHAS. HELLER
Clarence F. Griesinger MOUNT JOY, PA.
MASTERTONVILLE, PA.

NEW USES FOR BY-PRODUCTS OF MILK

It certainly would astonish little Miss Muffet if she knew how many uses science has discovered for milk since the days of curds and whey.
Suppose, for example, that Miss Muffet's modern granddaughter is invited out to a bridge luncheon. Her ivory-like vanity case,



The belt buckle and clip on the young lady's dress, the vanity case, hat ornament, manicure stick and other articles are made from casein by-products from milk.

cigarette holder, lipstick container and her pocket comb are made from milk by-products.
She shuffles cards that owe their gloss to milk, keeps score with a pen, whose barrel is derived from milk, on a pad of glazed paper whose glaze is a by-product of the same universal fluid.
The little ornament that adds gaiety to a chic sport hat may be manufactured from a dairy by-

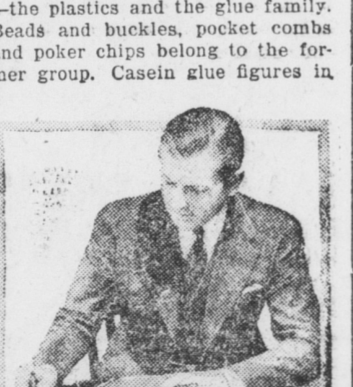
product. So are the buttons on a new blouse or father's spring suit, or mother's shining belt buckle. For there are innumerable articles in daily use that derive from the original atelier of Madame Moo.
Milk by-products enter into the process of making such dissimilar articles as dominoes, book bindings, buttons, wallpaper and knitting needles.

To find wider uses for the so-called "surplus" milk and thereby further aid the dairy farmers income is a widening activity.
Butter-making extracts from milk the fat and a small proportion of the soluble constituents. The remaining milk solids are left in the skim, buttermilk and whey. In producing the butterfat for the 1,650,000,000 pounds of creamery butter which this country found use for in a recent year, there were some 3,000,000 pounds of milk solids left over. In addition to that, the cheese-makers had 300,000,000 pounds of milk solids not included in the cheese.

The important by-products of milk are casein, which comes from skim milk, and the various chemicals contributed by the whey, such as lactic acid, sodium lactate and calcium lactate.
Lactic acid may play a part in making the appetizer at dinner and the pastry at the end. It is used in leather goods and in paints and may also have helped make the soft drink at your soda fountain.

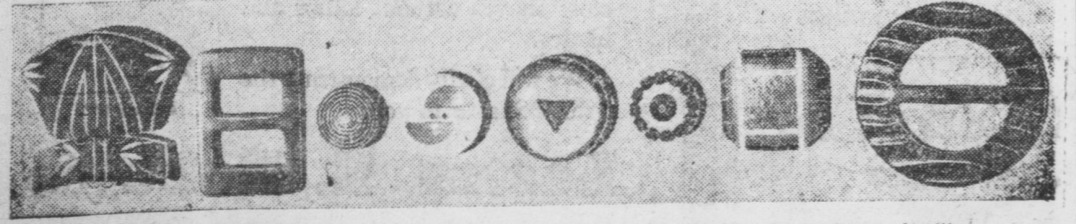
The vigorous youth of the milk by-products industry is strikingly shown by government figures. As recently as 1920, this country produced only a third of the casein it needed. By 1934 imports were a mere four per cent. American milk

companies furnished the rest, with Wisconsin and California sharing honors as the largest producers.
Used in plywood for airplanes, casein helps man to fly. In chemical sprays, it helps insects lose interest in flying. Experiments have even been made with it as a synthetic fabric resembling wool, an undertaking that must make the cow feel rather sheepish.
Casein products are of two sorts—the plastics and the glue family. Beads and buckles, pocket combs and poker chips belong to the former group. Casein glue figures in



Coat, vest and sleeve buttons of the busy executive, cigarette holder, pencil, calendar pad base and blotter are made of milk plastics.

paper and paint, linoleum and leather, upholstery and book binding—to mention just a few.
Magazine paper acquires its glossy finish by being dusted with fine china clay after being surfaced with casein glue.



Types of buttons and belt buckles in many colors that are made from by-products of milk.