

New Zephyrs to Make Overnight Runs



THIS summer will see light-weight, stainless steel, Diesel-powered Zephyr type trains running 1,000 miles between Chicago and Denver on an overnight schedule that takes about ten hours, or one-third, off the running time of the fastest steam trains.

Two trains of ten cars each, not including two cars containing the power plants, are being built here by the Edward G. Budd Manufacturing Company, pioneer in the development of light-weight, stainless steel construction. Known as the Denver Zephyrs, they will be operated by the Chicago, Burlington and Quincy Railroad between Chicago and Denver on a schedule that calls for leaving Chicago late in the afternoon and arriving in Denver in time for breakfast next morning.

and hence will be less expensive to operate. The first Zephyr, a four-car train running between Lincoln, Omaha and Kansas City, reduced operating and maintenance costs \$45,000 in its first year of service and at the same time increased revenue \$75,000. "Trains capable of covering 1,000 miles overnight have been inevitable ever since the first Zephyr demonstrated its ability to replace two conventional trains on a day-time run," Edward G. Budd, president of the company, said. "One of

Bird Neighbors

The Starling

Our most common bird, becoming so during the last thirty odd years, is the European or English Starling. This species, not a native, was brought from England and liberated in Central Park, New York in 1904. It is a most prolific breeder and has gradually spread over the entire eastern part of the United States. The starling belongs to the same family as the blackbird under which name it is known in parts of Europe. The bird, however, is not black, but is a rusty brown covered with small greenish metallic locking spots. The male bird is much more brilliant than the female, while the young, under a year old, do not have the spots at all.

Our neighbor, the starling is a bird which lives in close proximity to man. It is found in towns or around farm buildings, and is nearly always in flocks, especially so in the fall and winter.

The nesting sites of the bird are in holes in buildings, hollow trees, bird boxes or any other cavity, and are bulky affairs of grass, leaves, bits of rag and lined with feathers.

THE BOW-WOW MARKET

Well, they've started selling dogs on the installment plan! Banks and commercial credit houses as yet refuse to handle the paper, so breeders have evolved their own part-payment system. Consider Washington, for instance: A certain woman fell in love with a Scottie in a pet shoppe window. She was enabled to walk out of the store with the dog on a leash by agreeing to pay so much per month and concluding the deal by contracting to give the shop the first four puppies born to her new acquisition. She was much pleased with her bargain until she journeyed across the Potomac to Alexandria, Va., and there found a dealer offering dogs with only the first two potential pups at last payment. Incidentally, cross breeding is giving Scottie dogs a higher frame in keeping with the rise in the stock market. Dachshunds, though, are still affected by the depression and the debt question and continue to register "new lows."

BEAUTY PARLOR FOR PET DOGS SAVES OWNERS WORK

Dogs have a beauty parlor of their own in Paris where they receive hair cuttings, trimmings and curling, skin treatments and baths to keep their fur glossy. Sickly pets are given ultraviolet ray applications. Each morning, "customers" arrive in the arms of their mistresses or maids and the shop is doing a large business.

"I hear that Doolittle has stopped drinking coffee for breakfast." "Why is that?" "He says it keeps him wakeful at the office."

Help Kidneys

Don't Take Drastic Drugs Your kidneys contain 9 million tiny tubes or filters which may be endangered by neglect or drastic irritating drugs. Be careful. If functional kidney or bladder disorders make you suffer from Getting Up Nights, Nervousness, Loss of Pop, Leg Aches, Rheumatic Pains, Dizziness, Headaches, Under Eyes, Neuritis, Acidity, Burning, Smarting or Itching, you don't need to take chances. All druggists now have the most modern advanced treatment for these troubles—a Doctor's prescription called Cystex (Sis-Tex). Works fast—safe and sure. In 48 hours it must bring new vitality and is guaranteed to make you feel 10 years younger in one week or money back on return of empty package. Cystex costs only 36¢ a dose at druggists and the guarantee protects you.

Asker—What do you mean by saying that your wife is in and out all the time? Teller—She's in a rage and out of funds.

TUNNELL'S Animal Matter Fertilizers

We are carrying in stock these old reliable fertilizers, at our warehouse in Salunga.

A trial will convince you these fertilizers are of the highest quality.

S. H. HIESTAND & CO. Phone: Landisville 178 Salunga, Pa.



PROTECT—your baby's health

For a Few Cents a Day You Can Keep Food The Safe Way

The modern automatic refrigerator can be dedicated to no more worthy cause than safe-guarding your child's health. Could anything be more important than that? With an automatic refrigerator you can be sure of this wholesome protection. You can know that not only the baby's, but the whole family's food is kept safe, wholesome and good.

You need modern refrigeration . . . and inasmuch as it will pay for itself in food savings alone, it surely isn't thrifty to be without one.

PENNSYLVANIA POWER & LIGHT COMPANY and Your LOCAL RETAILER

How one of the new ten-car stainless steel Denver Zephyrs being built in Philadelphia by the Edward G. Budd Manufacturing Company will look beside the first Zephyr. Inset, Edward G. Budd, pioneer in lightweight railroad construction.

Everyday Cooking Miracles

BY FRANCES WEEDMAN Director Hotpoint Electric Cookery Institute

The cereal age, the age when young juniors thrive and grow rosy-cheeked from eating and from liking to eat nourishing, thoroughly-cooked cereals is very often a trying age for junior's mother. Cereals for children must be cooked for a long time at low temperature and as a result mothers have too long gone patiently and endlessly through

saucepan, in a small amount of water, right on top the range without any of the usual dire burning consequences. The measured heat of the Calrod units is accurately controllable; it is also evenly distributed over the bottom of the saucepan. This fact insures uniform cooking and an easy-to-wash cereal pan; and, providing only



Cereals for children may be cooked thoroughly, with little trouble, on the surface unit of the modern electric range

the long drawn-out ceremony of getting out the double boiler, of waiting for the water to boil, and then of giving the cereal a long, slow cooking. If a double boiler hasn't been used, the cereal is very often cooked with too much water, or the person in charge has had to stand over it with a stirring spoon constantly in hand in order to keep the cereal from burning.

Certainly this "food for junior" question has demanded much patient, painstaking effort but just see how easily this bothersome but really important task of cooking cereals may be done. The new automatic electric range has now joined the family circle; it performs cooking miracles in every phase of cookery; little unnecessary details are eliminated, mistakes are put to rout, and cooking becomes an amazingly simple, yet scientific art.

Low, Even Heat

The surface units of the miracle range are so constructed that a low, even heat can be maintained at all times. Therefore, cereals may be cooked in an ordinary covered

that the pan "fits" the unit, there's no loss of valuable heat around the edges of the pan.

But to get back to the principle involved in this easy cereal cooking process, because the heat from the surface units of the electric range is so perfectly and so easily controlled, a low temperature sufficient for steaming, yet not sufficient for scorching, may be constantly maintained. Less fuel is used in the cooking of cereals than is used in the old-fashioned double boiler method; less time is required for washing and putting away saucepans, and certainly less bother results for junior's mother.

Here is the prescription for steaming cereals on the surface units of the new electric range.

Steamed Cereal

- 1 cup cereal
- 2/3 cup cold water

Combine cereal and water in a saucepan; cover tightly and place on surface unit. Cook on High Heat until boiling point is reached, then switch to Low and continue cooking 25 to 45 minutes longer.

ELECTRIC FLOW SPEEDS CROPS AND KILLS WEEDS

By transmitting more than 100,000 volts of electricity into the soil from a tractor plow, an eastern experimenter is reported to have developed an effective way for eradicating weeds and grubs from the ground and hastening the growing of crops. Current is supplied from a special generator on the tractor and is conducted through the blades and is conducted through the blades of the plow. A field of buckwheat treated in this manner grew nearly twice as high as another, which had been given 200 pounds of fertilizer to the acre, and the seeds germinated in eighty hours. In tests with fields of corn, beans and potatoes, it was found that germination occurred in five days under the electrical treatment, whereas sixteen days were needed with nothing but

IRONVILLE WOMAN HOME FROM HOSPITAL

Mrs. Harry Albright, well known resident of Ironville, who has been confined to the Lancaster General Hospital due to an operation, returned to her home last week and is recuperating there. Her many friends and neighbors are hoping for her speedy recovery.

Test All Seed Corn

Farmers should view all seed corn with suspicion this spring until proved worthy. One of the simplest ways of proving seed corn is testing by the rag doll method. Other methods are the sawdust and the sand box. Your county agent can give detailed information. the fertilizer. The sections cultivated with the electric plow were free from weeds.

LEMON SPONGE PIE
1 lemon, juice and rind
1 cup sugar.
2 tablespoons flour.
2 eggs, whites kept separate.
1 tablespoon butter.
Cream together. Add 1 cup of milk. Mix well. Add lastly the stiffly beaten whites of the eggs. Bake in unbaked pie crust. (The whites come to the top to make the sponge) This makes one pie.

DEVILS FOOD CAKE
2 cups white sugar.
8 tablespoons melted shortening.
3 eggs.
2 cups sour milk.
2 cups cocoa.
4 scant cups flour.
1 teaspoon baking powder and 1 of soda, sifted with the flour. Mix sugar, butter and eggs until creamy then mix in cocoa, milk and flour.
Brown Sugar Icing for Cake
2 cups light brown sugar.
1/2 cup cream.
butter size of an egg.
1/2 teaspoon vanilla.
Boil, until a little in the spoon forms a soft ball in cold water, then beat till thick enough to spread.

Pineapple Upsidedown Cake
1/2 cup sugar.
1 egg well beaten.
4 tablespoons butter.
1 1/2 cups sifted swansdown flour.
1/2 teaspoons salt.
1/2 cup milk.
1 teaspoon vanilla.
Put in a skillet or heavy pan, 1 tablespoon of butter, 1 cup of brown sugar, 4 slices pineapple cut fine. Melt all these together, then put the cake batter on the top and bake. Turn out, upside-down, and serve with plain or whipped cream.

THE NOVELTY OF IT
Since grandmother's styles have returned, the hoop that grandpa played with as a boy has been revived by the toy industry—The Cycle Trades in America has appropriated \$200,000 to repopularize the bicycle.—Packaged paints have been a life saver for the paint industry.—Apples, onions and potatoes are now appearing in packages. The stump has boomed stamp collecting, if anything. A big New York store has just opened a philatelic department.

"Mrs. Upton's pet dog has been run over; she'll be heartbroken." "Don't tell her abruptly." "No, I'll begin by saying it's her husband."—Sydney Bulletin.

SOME PAINT JOB!

Painting Dome of U. S. Capitol Takes Thousand Gallons



One thousand gallons of special paint were required recently, to cover the dome of the United States capitol with a protective coat. The liquid was prepared by a formula approved by the bureau of standards and is expected to withstand several years of exposure. More than a week was required to scrape off the old paint.

GAMES

This game is especially appropriate for parties where the guests all know one another. Half of the company must leave the room. Those remaining are blindfolded and seated with a vacant chair beside each of them. At a given signal the first guests return to the room and quietly take the vacant seats. They all sing at the top of their voices while the blindfolded ones try to guess who their neighbors are. When they guess

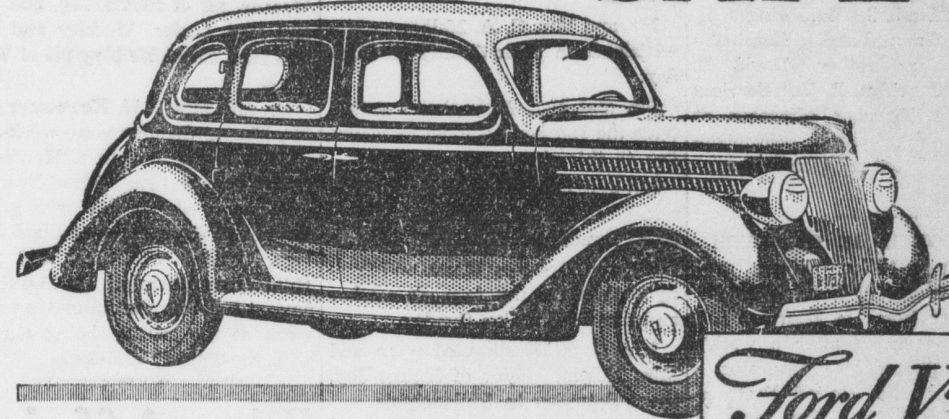
correctly the blindfolds are removed. If not they remain blindfolded until they do guess right. The neighbors may change places after the first guess. When all the blindfolds have finally been removed the two groups may change places and start a new game.

Farmers—Attention

Sorrel Belgian Stallion Licensed, Registered and Approved, 1,750 lbs., 16 1/2 hands, foaled 1931. Stands for service on the Bucher Farm along Manheim—Elizabethtown road, near Chiques Church, six miles east of Elizabethtown, 2 miles west of Mastersonville. Terms \$10.00. If mare fails to bring live colt \$10.00 will be refunded after 11 months period or mare rebred. EDWIN F. WHITMAN, Owner, Elizabethtown, Pa., R. 3. Phone 928R2L.

SAMUEL FREY FUNERAL HOME
"THREE GENERATIONS OF SERVICE"
101 W. MARKET STREET
PHONE 33 OR 74
HARRISBURG, PENNA.

Roomy, Comfortable, Smart—and, above all, SAFE



Ford V-8 for 1936

\$580

For model illustrated F.O.B. Detroit Standard accessory group, including bumpers and spare tire, extra. New, money-saving convenient terms—ask about the \$25-a-month and 6% plan of the Universal Credit Company

THE new Ford V-8 gives you a one-piece welded-steel body. Safety Glass all around is standard equipment in all models at no extra cost. Super-Safety brakes have 186 square inches of effective braking surface. Big 6.00 x 16 inch air-balloon tires, transverse springs and a low center of gravity give safety on curves.

In performance, riding comfort, and beauty, the 1936 Ford V-8 will change your whole conception of modern automobile dollar value. Call us today for a demonstration.

GARBER'S GARAGE Elizabethtown, Pa.

20-YEAR OLD APPLE ORCHARD FOR SALE

All Standard Varieties

- Trees in most excellent condition and due to nature of soil produce exceptionally fine flavored and richly colored fruit.
- Orchard has a complete Water System, 22 acres of land, 2 acres of woodland, large frame building, complete spraying outfit, tractor, etc. all included in sale.
- The price is very reasonable and can prove a good investment. For further particulars apply to

JNO. E. SCHROLL REALTOR Phone 41J Mount Joy