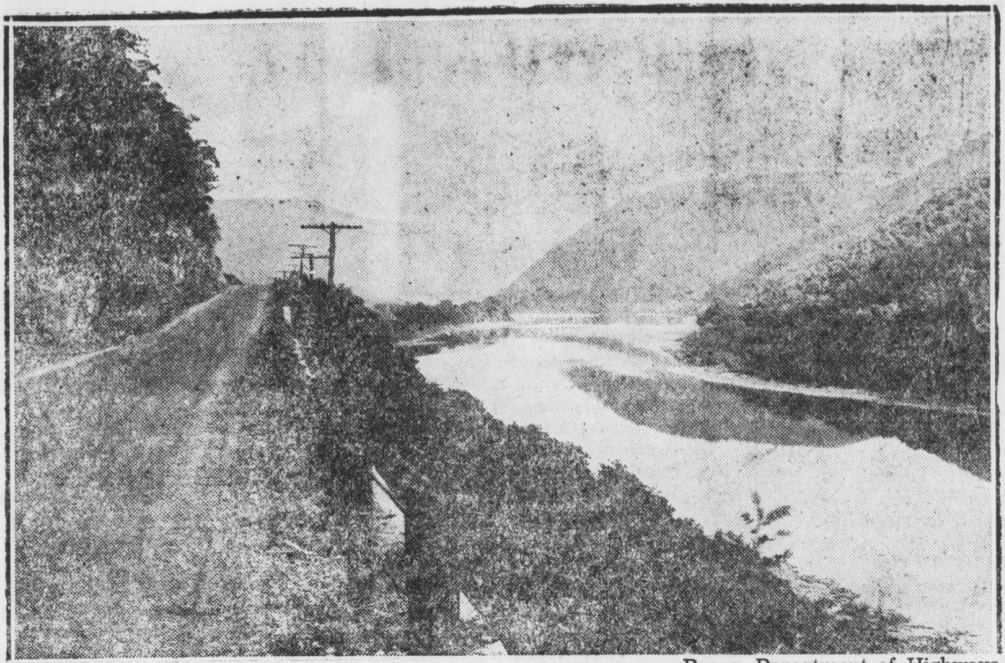


Bucktail Trail . . .



Penna. Department of Highways

Typical scenic vista unfolding before motorists in northern central Pennsylvania. Rocky walls of the Allegheny Plateaus tested engineering skill in carving a roadway for famous Bucktail Trail between Lock Haven and Emporium. More than \$3,000,000 was spent to tap "North Woods" and "Sportsmen's Paradise."

This is the thirteenth of a series of articles prepared under the direction of Warren Van Dyke, Secretary of Highways, in a campaign to stimulate interest in the tourist and recreational advantages of Pennsylvania. Today's story deals with the vacation possibilities of the Keystone State in northern central Pennsylvania.

The Bucktail Trail, connecting Lock Haven with Emporium, St. Mary's and Ridgway and providing a favorite route for travelers between Buffalo and Harrisburg, runs through picturesque valleys and hills, rich in historical background and tradition.

The first purchase of forest land by the Commonwealth of Pennsylvania, for reforestation purposes, was made along this trail in 1898 and since then the Forestry Department has added thousands of acres, through which numerous forests are maintained by the State. Wild life on these forest preserves is plentiful, and the counties through which the Trail passes, Clinton, Cameron and Elk, are favorite hunting areas.

Those who travel over the Bucktail Trail cannot help being reminded of the vanished lumber era, during which lumbering operations in this section excelled those in any other section of the state. Winding along the waters of the Susquehanna, the highway looks down upon a stream which once bore thousands of lumber rafts on its spring currents to the booms at Lock Haven and Williamsport. Until the opening of the Bucktail Trail, the river and the railroad were the only means of transportation through much of the wild territory now traversed by one of the

great scenic highways of the East. The crews that constructed the highway, which was opened in 1930, met a number of mountain families who had never seen an automobile.

Though the lumbering days are gone the forests through which the Bucktail Trail passes are regaining their old grandeur. The Trail is one of the few highways of the state which passes through country abounding in mountain peaks and far-flung forest areas. Within easy access of the Trail are 3,000 fishing and hunting camps and about 12,000 miles of trout streams. These facilities will be expanded rapidly in the near future, it is expected, with the development of the Bucktail State Park and Pleasureland, a long stretch of forest and farm land from Lock Haven to Emporium, in which recreational facilities will be cultivated under the regulation of the State Department of Forests and Waters.

Just west of Lock Haven, the Bucktail Trail passes through lands which have produced coal, oil, and gas, as well as timber. Near Queen's Run and Farrantsville, on the opposite side of the river from the highway, lie the almost vanished remnants of a castle erected by money of the Spanish crown a century ago, when Spanish royal agents were sent here to make real estate investments for the throne. To the other side lie the sites of abandoned towns settled many years ago by English and Welsh miners, sent here by peers of England to develop mines which were worked out years ago.

The Bucktail Trail was named from the rifle regiment which gathered from Cameron, Elk, and McKean Counties on April 27, 1861 and embarked on

four rafts at Driftwood. They floated down the river to Harrisburg, gathering recruits as they went, their woodsmen's garb, featured by the bucktail insignia on their caps, giving them their name. They formed the nucleus around which was organized the Bucktail Regiment of the Pennsylvania Reserve Corps, attached to the Army of the Potomac throughout the Civil War. A monument to these unique riflemen is erected at Driftwood, Pennsylvania.

Construction of the Trail, which is of concrete and macadam, started in 1926 and continued for four years, capping almost forty years of effort on the part of the inhabitants of central Pennsylvania to bring about construction of a road to connect towns which were almost neighbors, so far as the actual distance between them, but were far apart by highway. In Clinton County, for instance, the county seat at Lock Haven could not be reached by the residents of Renovo, 27 miles away, by any highway route except a narrow, rough road which almost doubled the distance.

Eleven different contracts were involved in the construction and the total cost was \$3,800,000. The expense was vastly increased by the necessity of excavating the side of the mountains between Lock Haven and Renovo to cut through the road.

For road condition and free tourist map of Pennsylvania write the Bureau of Publicity and Information, Pennsylvania Department of Highways, Harrisburg. The Department of Forests and Waters will supply information concerning camping facilities and forest parks.

POULTRY

DISEASE IS FOUND IN POULTRY YARDS

Rotation or Cropping Will Prove Helpful.

By Dr. Robert Graham, Chief in Animal Pathology, College of Agriculture, University of Illinois—WNU Service.
Disease organisms, worms and coccidiosis germs which are found in contaminated soil and constitute the greatest menace to poultry production can be controlled only by proper management, including the rotation or cropping of poultry yards.

No medicine will correct the ailments caused by "chicken sick" ground, notwithstanding the claims of remedy vendors to the contrary. All intestinal and parasitic diseases of chickens, as well as contagious germs such as coccidiosis, are spread by the droppings of infected fowls. Thus the soil of many poultry yards becomes an incubator or seed bed for the propagation and spread of these diseases.

To overcome the development of disease germs, poultrymen who hope to reap a profit from their efforts must rear their chicks on clean ground and plow, cultivate and crop the old chicken yards. Rotation of the poultry range so that it is used but once in every four years is a profitable practice on farms where this can be done.

In cases where extensive rotation of the poultry range is not possible, keeping the chickens out of the yard until the ground can be plowed and a new seeding gets well started is helpful. For summer planting, a combination of oats and rye makes a satisfactory mixture. An ordinary farm disc is probably the most satisfactory tool to use in working the poultry yard, although a plow may do just as well. The latter implement, however, tends to bring to the surface the contamination which has been plowed under the previous year.

Clean Incubator Before It Is Placed in Storage

At the close of the hatching season, when we are in the rush work of caring for brooder chicks, feeding the growing flock, with possibly garden work or perhaps bees to care for, we are apt to overlook the necessity of cleaning and properly caring for the incubator before storing it away. A little carelessness at this time may mean delay and expense at the beginning of next hatching season, says a poultryman in the Indiana Farmer's Guide.

As soon as the last hatching is over it is time to prepare the incubator for storing. Drain the pipes, if the incubator is a hot water machine; and be sure that all the water drains out. Clean the lamp flues, and boil the burner in soda water. Brush out the egg trays and the nursery trays, cleaning them thoroughly of down and dirt. Wire screen may be washed in lukewarm soapsuds. After the machine has been thoroughly cleaned inside and outside, spray at the interior parts with some good disinfectant, then store in a dry, safe place until needed again, when it will be ready for duty without delay or unnecessary expense.

Using Feed Troughs

Small feed troughs are more desirable than the large hopper-type of feeders. With the small trough-type of feeders fresh feed is put out several times a week, which the birds will eat better than stale feed in the large type of feeder. Plenty of feeding and watering space is conducive to good production. A trough 4 feet long at which the birds can feed from both sides will feed 20 hens. At least three feeders 4 feet long should be allowed for each 100 birds. One-half inch of drinking space is allowed per hen. Grain can best be fed in a trough when trouble is experienced in keeping the litter clean. Both Leghorns and dual purpose breeds are trough fed thin grains at the University of Arkansas College of Agriculture at Fayette. The grain is fed twice a day regulating the amount of grain given. The system of feeding grain is more satisfactory than feeding grain in dirty litter.—Hoards Dairyman.

Poultry Notes

In the summer time, geese must have access to shade and plenty of water, as they cannot stand the hot sun.

Georgia figures its annual poultry production at \$40,000,000, live stock \$72,250,000, and dairy products at \$20,000,000.

People of the United States eat about an average of three-fourths of an egg apiece each day, while Canadians average one egg a day.

From five to five and a half months are required for a Leghorn to reach laying age.

If one is feeding milk (liquid) to his chicks he must be careful about flies. Flies are the intermediate host for tapeworms, and where there are flies there are apt to be tapeworms.

Hatcherymen pay \$15,000,000 for the eggs they use, 6,250 carloads of them. This price represents a premium of \$6,000,000 over the price of regular market eggs.

Save Beans From Beetles
There are a number of dusts and sprays for use against the Mexican bean beetle. Consult your county agent about the time and method of application.

Avoid Poisoning
Rose chafers are poisonous to young chickens. The birds should be kept away from the insects by housing or yarding until chafers disappear.

Lancaster Stock Market

CORRECT INFORMATION FURNISHED WEEKLY BY THE PA. BUREAU OF MARKETS FOR THE BULLETIN

As usual, not much trading in the cattle yards Saturday, asking prices are steady with Friday on all grades of steers, heifers, cows, and bulls. Prospects for Monday are for another liberal run of local fed steers. Stockers and feeders in light receipts past few days, prices holding steady.

Calves steady with light receipts. Hogs in fair supply with little demand, indications will have an active market Monday.

Southern lambs selling 9.00-9.50; locals 8.25-8.75. Supply light. Receipts: 616 Cattle, 18 Calves, 11 Hogs, 60 Sheep.

STEERS	
Choice	9.50-10.00
Good	9.00-9.50
Medium	7.75-8.75
Common	7.00-8.75

HEIFERS	
Choice	8.00-9.00
Good	7.00-8.00
Medium	6.00-7.00
Common	4.50-6.00

COWS	
Choice	6.75-7.50
Good	6.00-6.75
Common and medium	4.50-6.00
Low cutter and cutter	3.00-4.50

BULLS	
Good and choice	6.50-8.50
Cutter, common and med.	4.00-6.50

VEALERS	
Good and choice	8.50-9.50
Medium	6.50-8.50
Cull and common	4.50-5.50

FEEDER & STOCKER CATTLE	
Good and choice	7.00-8.00
Common and medium	5.00-6.25

HOGS	
Good and choice	10.25-10.50
Medium and good	7.00-8.00

SHEEP	
Choice lambs	8.25-8.75
Medium	7.00-8.00
Common	6.00-7.00
Yearling wethers	5.00-6.00
Ewes	1.50-3.50

Cultivate Carefully

Deep cultivation close to the row of vegetables destroys many surface roots, and ridging against the row exposes the surface roots between the rows. Level culture and shallow cultivation does much good and no danger. One hoeing or cultivation each week is enough to control weeds and maintain a shallow mulch.

Patronize Bulletin Advertisers.

When The First of Every Month Arrives

On the first of every month, when bills fall due, you begin paying out—the landlord, the gas and electric company, the telephone company, and a dozen others get their share. When you are through, you have paid everybody but yourself. Try this plan instead—pay yourself first.

OWN YOUR OWN HOME AND PAY YOUR RENT TO YOURSELF BY USING THE BUILDING & LOAN PLAN

You will find that you are able to manage without cheating yourself. This plan is the most certain and economical way and makes you feel that you are getting somewhere financially.

MOUNT JOY BUILDING & LOAN ASSO.

To Finance Your Home

Under supervision of state Banking department

Jno. E. Schroll, Pres. Henry G. Carpenter, V. Pres.
E. M. Bomberger, Sec. R. Fellenbaum, Treas.

Now Is The Time To Fill Your Coal Bin If You Want to Save Money

Good, Clean Coal

At Lowest Prices

Harry Leedom

Phone 5-W Mount Joy

Wise Buyers Read BULLETIN ADS

ADVERTISEMENTS Must Be Seen and Read

Every advertiser likes to believe that his advertising will be seen—will be read.

But how many readers of a given medium actually read the ads? How many, for that matter, even so much as see them?

Circulation figures, milline rate computations, however, impressive, do not provide the answers.

The clue is in time. Meaning—the more time the reader gives to the reading of a publication the greater the certainty that he will see the ads—and read them.

Recently, O. B. Winters, vice-president, Erwin Washey & Co., said: "I know from experience that a good country weekly is read from cover to cover by literally every one in the community it serves."

Why? The answer is—time. Country newspaper readers find the time to read their local papers. They can be depended upon to see ads—and read them.

People never read a large daily paper as carefully or as thoroughly as they do a good weekly.

Let us serve you in placing your advertising where it is read.

THE BULLETIN

about the time and method of application.

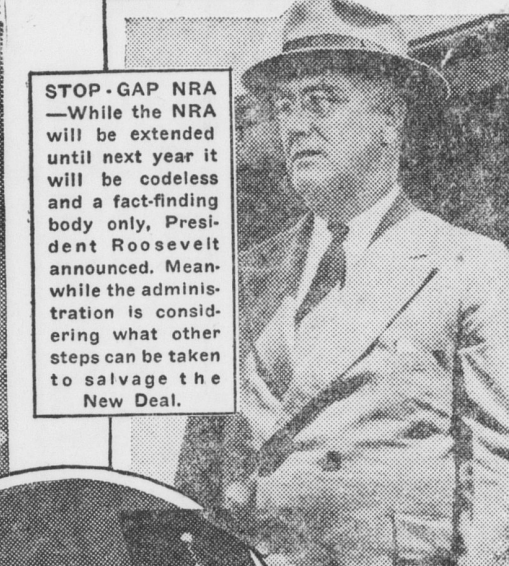
MOUNT JOY

In The WEEK'S NEWS

CURRENT EVENTS PHOTOGRAPHED FOR THE BULLETIN



P.S. THEY GOT THE JOB—First scholarship winners of Fisher Body Craftsman's Guild to graduate from college found good jobs awaiting them. Albert Fischer, U. of Illinois, will join the research division of General Motors, and Raymond Doerr, U. of Mich., the G-M proving grounds staff. Left to right are Fischer, Guild Secretary W. S. McLean, Doerr and Guild President W. A. Fisher.



STOP-GAP NRA—While the NRA will be extended until next year it will be codeless and a fact-finding body only, President Roosevelt announced. Meanwhile the administration is considering what other steps can be taken to salvage the New Deal.

ALMA MATER HONORS SON—M. Sayle Taylor, nationally known as "The Voice of Experience," receives an honorary degree of doctor of laws from William Jewell College, Liberty, Mo., his alma mater. Dr. Taylor delivered the commencement address.



"AY GO HOME"—Greta Garbo, famous screen star, said "she was tired of it all" and sailed for her home in Sweden for a five months' rest.



NOW THE "KITCHEN TROUSSEAU"—Colette d'Arville, pretty French star of the Opera Comique, is so enthusiastic about American kitchen devices, she is taking back a complete "kitchen trousseau" assembled by Hammacher Schlemmer.

FIGURATIVELY SPEAKING—This is the figure, and figures, of Miss Sally O'Brien of Chicago, who won a city-wide contest to select a girl in whom was combined a perfectly proportioned body, healthy beauty and complexion.