

### What Are the Wild Waves Saying?



Photo by Orrville Logan Snider

Raquel Torres, beautiful film star, should be able to tell you, for in the event she does not hear the whole story at this spot, she will hop on her bicycle and ride on to the next listening post on Malibu Beach.

### Sale Register

Every Thursday Evening, at Wagner's Park, Beverly, regular weekly community sale of stock, chicks, merchandise, furniture, meats, etc. by G. K. Wagner.

Wednesday, Aug 1—At 7 p. m., a carload of cows, fruit and merchandise, etc. by C. S. Frank & Bro.

Wednesday, Aug. 8—At 7 p. m., a carload of cows, fruit and merchandise, etc. by C. S. Frank & Bro.

### Plant Garden Crops

Sow green curled or broad leaved batavian endive for October and November use. Place several seeds in hills about 8 to 10 inches apart and thin the plants when small to one in a hill. Sow Chinese or celery cabbage the same as endive. Plant dwarf Scotch kale for late fall and winter use; space the plants about 6 to 10 inches apart.

Visitor (to angler at riverside)—Is this a good place for fish? Angler—Yes, I never see any of them leave it—London Tit-Bits.

### HENDERSON

**Balloon Tire Bicycle**  
Comprise their many exclusive features  
Freer Running, Easier Riding  
Trades—Terms, Repairs—Rentals  
**Warren Henwood, Inc.**  
324 E. King St. LANCASTER  
Open Evenings  
Motorcycles, Boats, Motors  
July 25-31

### L. E. ROBERTS

**NOTARY PUBLIC**  
Specializing in Auto Titles, Licenses, and Operators Licenses  
Marietta St. and  
Corner Main & New Haven  
**MOUNT JOY, PA.**  
July 25-31

### EYESIGHT

**Dr. John D. Killheffer**  
OPTOMETRIST  
Over Thirty Years Experience

**ELIZABETHTOWN, 16 E. High Street**  
Open Tuesday and Friday  
9 A. M. to 5 P. M.  
Saturday, 9 A. M. to 4 P. M.

**MANHEIM, 19 W. Steigel Street**  
Mon., Wed., Thurs., 8 to 5 P. M.  
Evening Tues., Fri. and Sat.  
Telephone, Manheim 11-J  
July 25-31

"I work all the time and feel strong . . ."



### You Can Escape Periodic Upsets

Women who must be on the job every day need Lydia E. Pinkham's Tablets. They not only relieve periodic pain and discomfort . . . they help to correct the CAUSE of your trouble. If you take them regularly . . . and if yours is not a surgical case . . . you should be able to escape periodic upsets.  
Chocolate coated . . . convenient . . . dependable. Sold by all druggists. New small size—50 cents.

"I am 27 and a textile winder in the mill. I had cramps so bad that I had to cry many times. I used to stay in bed two days a month. Lydia E. Pinkham's Tablets helped me wonderfully. For the first time in my life I do not suffer. I can work all the time now and feel strong.—Mrs. Bennie Coates, 1963 Terrace St., Muskegon, Mich.

**LYDIA E. PINKHAM'S TABLETS**  
A Uterine Tonic and Sedative for Women



### Religious News In Churches

NEWS PERTAINING TO ALL THE CHURCHES IN MT. JOY AND THE ENTIRE SURROUNDING COMMUNITY

All the church news in this column is published gratis and we solicit the news of your church. Ask your pastor or someone to mail or bring this news to this office every Tuesday afternoon.

**Kraybill's Mennonite Church**  
9:00 Sunday School.

**Presbyterian Church**  
Rev. C. B. Segelken, D. D., Pastor  
Church School 9:30 A. M. H. S. Newcomer, superintendent.

**Trinity Lutheran Church**  
Rev. George A. Kercher, Pastor  
Bible School 9:30 A. M.  
Morning service 10:45 A. M.

**Trinity Evan. Congregational Church**  
Rev. John Waser, Pastor  
Sunday School 9:30 A. M.  
Morning Worship 10:30 A. M.  
Vespers and Bible Study 7 P. M.

**Mt. Joy Mennonite Church**  
9:00 Sunday School.  
7:00 P. M. Preaching.  
Friday evening Teachers' meeting at 7:30.

**Dougal Presbyterian Church**  
Rev. C. B. Segelken, D. D., Pastor  
Church School 9:30. D. C. Witmer, superintendent.

Morning worship and sermon 10:00 A. M. Rev. Clayton Witmer will conduct the service and speak.

**Reformed Mennonite Church**  
Christian S. Nolt, Pastor  
There will be services in the Reformed Mennonite church on West Main street next Sunday morning at 9:30 standard time.

**St. Luke's Episcopal Church**  
Holy communion and sermon the first Sunday of each month at 10:30 Sunday School at 9:15.  
Morning prayer and sermon 10:30 Evening Prayer 7:30 P. M.  
Choir rehearsal Wednesday evening at 6:30.

**Newtown U. B. in Christ**  
H. M. Tobias, Pastor  
Sunday School at 9:15 A. M.  
Emanuel Myers, Superintendent.  
Morning worship at 10:15. Sermon theme, The Secret Meeting.  
Prayer service Wednesday at 7:30. Clayton Risser, leader.

**Church of God**  
Rev. G. F. Broske, Minister  
Sunday School 9:30.  
Preaching 10:30.  
C. E. 7:00.  
Preaching at 7:30 P. M.  
Prayer service Wed. 7:45 P. M.  
Everybody welcome.

**Florin United Brethren in Christ Church**  
Rev. J. W. Funk, Pastor  
Prayer meeting Thursday evening at 7:30.  
Sunday School 9:30 A. M.  
Morning worship 10:30.  
Evening worship 7:15 P. M.  
Intermediate and Senior C. E. in the evening.

**St. Mark's United Brethren in Christ**  
Rev. O. L. Mease, S. T. D., Pastor  
Sunday School at 9:00.  
Morning worship at 10:15 A. M.  
Rev. John B. Brubaker will deliver the morning message.  
Evening worship and sermon 7:30.  
Rev. Eli Ingle will deliver the evening message.  
Meeting for prayer and the Bible study on Wednesday at 7:30.

**The Methodist Episcopal Church**  
Rev. Harold C. Koch, Minister  
Sunday Church School 9:30 A. M.  
Morning Worship Service at 10:30 A. M.  
Preaching at 7:30 P. M.  
Sunday, July 29, The Truth About Jesus.

Sunday, August 5th, How Jesus Christ Saves Us.  
During the month of August the Sunday evening service will be closed.  
On Tuesday morning, July 10th, the Mount Joy Methodist Church had charge of the WGLA radio morning devotional service.

### Science Nibbles

Snake venom, unlike most other animal poisons, has been found to be toxic to plants.

A large spot on the planet Jupiter was recently discovered by an amateur astronomer in Germany.  
Dr. Soma Weiss, of Boston, says blood pressure is not standard and that some people who have an apparently normal pressure are suffering from a disease of the arteries and some having a high pressure are normal.

The increase in cancer of the lung has led to a study of the different dusts and gases inhaled daily such as road dust, exhaust gases from autos, etc.

A process by which wool is rendered itchless and shrinkless has been invented.

It is thought possible that the newly discovered 'heavy water' is one of the causes of senility.

Paternity can now be disproved although not proved by blood tests.

Angina pectoris has been successfully treated by the removal of the thyroid gland.

John Millen, director of the Detroit Zoo, says he has found that elephants like tobacco.  
A native barometer of Bermuda is made by placing shark oil in a bot-

tle. In good weather it is clear, but with the approach of a storm it turns milky.

Capt. Thomas See, professor of mathematics in the United States Navy, predicts floods for 1936, 1937, and 1938. His calculations have been based on the sunspot cycle.

Dr. J. S. Oartel, of Wilkesburg, Pa., has discovered that by placing a diseased tooth between the receiving and sending plates of a short-wave broad-casting set 30 per cent of the germs can be killed.

A new ray has been discovered which has a penetrating power approaching that of the cosmic ray. It has been noticed only during thunder storms.

Dr. Francis Benedict, of the Carnegie Institution believes longer life depends upon man's ability to culti-

vate a mind free from worry.

A serum which was prepared for the prevention of tuberculosis is being tested on human beings. Two prisoners at the Colorado State Prison offered themselves and were inoculated first with the serum and then with tuberculosis bacilli.

Out of 303 forecasts of the mean temperature for the following 24 hrs. by the Weather Bureau station at San Francisco only 57 have missed by more than three degrees.

### Reduce Feed Costs

Culling the non-producing hens out of the farm flock will reduce feeding costs. Fewer mistakes will be made when the hens have been properly fed and given a chance to produce as many eggs as they are capable of laying.

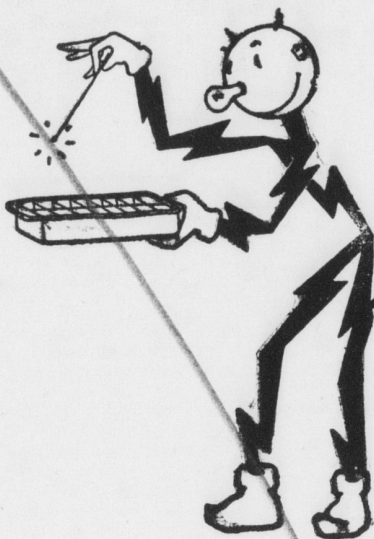
### Cull Inefficient Cows

In times of feed shortage and high feed prices all inefficient animals should be kept away from the feed supply. It is better to feed a few good cows well than to underfeed a larger number.

### Mulch the Garden

Mulches of strawy manure, leaves, lawn clippings, and sometimes paper are used in the home garden to conserve moisture and keep down weeds. Strawy manure is especially valuable for celery, cucumbers, and tomatoes.

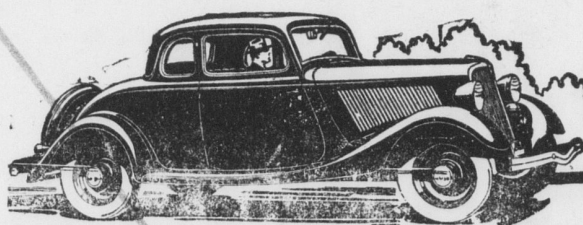
### READY KILOWATT SAYS



I'm a regular wizard at making Ice Cubes in a hurry, and you should see me prepare frozen desserts and chilled salads that fairly make your mouth water - - all you need is Electric Refrigeration.

**Pennsylvania Power & Light Company**  
and your Local Dealer

## There Are Some Things We Refuse To Do To Sell A Car



There are some things we refuse to do to sell a car. We like sales, but fairdealing and the confidence of our customers are desirable too.

For one thing, we refuse to poison any one's mind against another make of car. We know what our car is and what it will do, and we are ready to tell you about that, but to imply defects in another car is not our business.

We have done our utmost to encourage intelligent buying of motor cars by showing purchasers how to protect their own interests. All that a good producer asks is a customer who knows quality when he sees it (an intelligent purchaser will speedily conclude) that only a bad product requires bad sales methods.

We refuse to keep dinning in your ears that the Ford V-8 is the best, most economical, lowest priced car. That is claimed for several cars. Obviously it can-

not be true of all. There comes a point where claims and adjectives and all advertising hysteria disappears in its own fog. Personally, I prefer facts.

We say the Ford V-8 is the best car we have ever made.

We say that our 8-cylinder car is as economical to operate as any lower number of cylinders.

We say that we have always been known as the makers of good cars and that the many good, well-balanced qualities of our present car, place it at the head of our line to date.

Any one wishing to do business with us on these principles will find our word and the quality of our product to be A-1. What we say about economy, operation and durability will stand good anywhere.

(Signed) HENRY FORD

## GARBER'S GARAGE

SALES FORD SERVICE

ELIZABETHTOWN, PENNA.