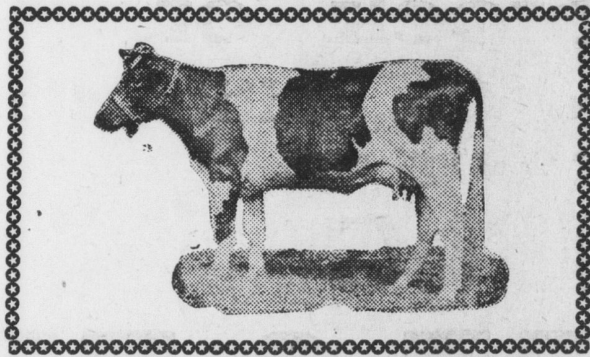


SALE BILLS!



Nothing Advertises a Public Sale Better than an Attractive Sale Bill. Our Posters are Above the Average because we have the facilities—Type, Illustrations, Machinery and Skilled Mechanics. Low Prices



THE BULLETIN MOUNT JOY, PA.

...what is the
C.S.C.?

MAKE SURE OF ENOUGH READY MONEY NEXT CHRISTMAS BY JOINING ONE OR MORE OF THE FOLLOWING CLASSES

- CLASS 10F Members paying 10 cents a week for fifty weeks will receive..... **\$5.00**
- CLASS 25 Members paying 25 cents a week for fifty weeks will receive..... **\$12.50**
- CLASS 50 Members paying 50 cents a week for fifty weeks will receive..... **\$25.00**
- CLASS 100 Members paying \$1.00 a week for fifty weeks will receive..... **\$50.00**
- CLASS 200 Members paying \$2.00 a week for fifty weeks will receive..... **\$100.00**
- CLASS 500 Members paying \$5.00 a week for fifty weeks will receive..... **\$250.00**

with interest added if all payments are made regularly or in advance

The Union National Mt. Joy Bank
Mount Joy, Penna.

dec.7-2mos.

CLARENCE SCHOCK
MOUNT JOY, PA.

WE ASK PATRONAGE WE GIVE SERVICE

LUMBER-COAL

PENNSYLVANIA DUTCH What Shwilkey Bumblesock Has To Say This Week



DER GROSSDAHDE

Die Mamme mag net spiele,
Der Dahde hot ka Zeit,
Aver ich un my Grossdahde,
Mir travele oft weit.

My Goul is arrig frisky—
Meim Grossdahde sei Shtock—
Un ich duh ihn oft reite
Mit seiner Brill un Rock.

O, er dut's gar net meinde.
Der Grossdahde iss gut.
Er losst mich ebmohls weare
Sei Shippers un sei Hut.

Un wann ich mied bin ovets
Nemmt er mich uf sei knie,
Sagt der Grossdahde, "Die Kinner
Un lest mir Poesie."

Un wann ich krank bin geht er
Gar nimme fun meim Bett,
Shure so en Grossdahde
Henn annerne Buve net!

Wann die Mamme will mich shtrofe
Un de rDahde mauled dabei,
Sagt der Grossdahde, "Die Kinner
Die misse Kinner Sei."

"Ihr dut zu fiel exshpecte
Er iss doch jushk en kind,
Un so en Bievie bletsche
Iss fer shure en arrige Sind."

Noh duhne sie sich shemme
Un laafe immer fort,
Un my guter Grossdahde
Hot immer's letschte Wort.

Ya, mer henn gute Zeite
Just bei uns alla.
Ich maag ka amere Kinner.
Sie magte weiter geh.

Many Markets for Eggs
In Pennsylvania there are 102 cities of more than 10,000 residents each. These centers of population provide markets for eggs from the 20 surplus producing counties of the state and from other states. Competition has brought about decided improvement in the quality of market eggs.

Subscribe for The Bulletin

THREE MEN HONORED FOR UNBROKEN SERVICE

Last Wednesday a reception was held in honor of Mr. Frank D. Kauffman, Mr. James H. Brown, and Mr. A. A. Stacks, the assistant train master Philadelphia Division, who recently joined the honor roll of the Pennsylvania Railroad upon their retirement, with a combined continuous service of 144 years in the freight train master's department. On November 21, 1932, Mr. Frank D. Kauffman was presented with a fifty-year gold button for completing a half-century of unbroken service with the Pennsylvania Railroad.

The reception was held in the home of the American Legion, No. 21 South Front Street, Harrisburg, starting at 3:00 P. M., January 18. A dinner was served at 5 o'clock consisting of the usual Dutch treat, sauer kraut, etc. Games and amusement followed after appropriate remarks by General Superintendent H. H. Gareigues, Superintendent F. R. Gerard and Freight Train Master James S. Peoples. Mr. Kauffman, Mr. Brown and Mr. Stacks were each presented with leather hand bags by Mr. R. G. Cunningham who was long associated with these men in the freight train master's department.

Fifty-seven friends of long association with Mr. Kauffman, Mr. Brown and Mr. Stacks were present at this affair to pay their respects to them.

Committee in charge, James S. Peoples, Joseph Brown, R. G. Cunningham and John R. Garverick.

Protect Evergreens
Evergreens can be protected from winter injury by heavy mulches of straw litter or leaves. Rhododendron, mountain laurel, azaleas, and the other broad-leaved evergreens should be mulched heavily with the pine or hemlock needles, oak leaves or well-decomposed hardwood sawdust.

Put Tools in Condition
Garden tools and equipment can be repaired now and put in condition for early spring work. Rust can be removed, cutting edges sharpened, handles smoothed, and broken parts replaced.

If You Get Up Nights Make This 25c Test

Physic the bladder as you would the bowels. Drive out impurities and excessive acids that cause irritation burning and frequent desire. Get a 25c test box of BU-KETS, the bladder physic, from any drug store. After four days if you are not relieved of getting up nights go back and get your money. BU-KETS, containing buchu leaves, juniper oil, etc., acts pleasantly and effectively on the bladder similar to castor oil on the bowels. If you are bothered with backache, or leg pains caused from bladder disorders you are bound to feel better after this cleansing and you get your regular sleep. E. W. Garbar, Druggist.

Produce & Live Stock Market

CORRECT INFORMATION FURNISHED WEEKLY BY THE PA. BUREAU OF MARKETS FOR THE BULLETIN

The demand for nearby produce was generally very slow and the market on most commodities was dull according to the Federal State Market News Service. The best Stayman and Delicious apples sold at \$1.00 to \$1.50 per bushel, Yorks brought 75c to \$1.17, Romes 85c to \$1.10 while Nero sold at 75c to 85c with some poor and small of all varieties selling lower. Cranberries were dull and quarter barrel crates sold at \$1.50 to \$2.50 with the best stock bringing \$2.00 to \$2.50.

Beets sold very slowly at 15c to 25c per 5-8 basket while carrots brought 10c to 30c with most stock selling at 20c to 25c. Savoy cabbage was in light supply and it brought 10c to 15c per 5-8 basket. Celery was in moderate supply but the demand was slow and most wired bunches brought 6c to 10c, a very few sold higher while the poorer sold as low as 3c.

Leeks were in light supply and brought mostly 1-1-2c per bunch while pot herbs sold at 2-1-2c to 3c. Mushrooms were slightly weaker and the best 3-lb. baskets brought 40c to 65c with poor stock selling as low as 25c. Parsley root was in light supply and sold at 1c to 3c per bunch.

Sweet potatoes were about steady and most 5-8 baskets No. 1 stock sold at 45c to 55c, a few brought 60c while poorer sold at 35c to 40c and No. 2 stock brought 15c to 25c. Parsnips were very dull and 5-8 baskets brought 20c to 30c while white turnips sold at 10c to 25c.

The potato market was barely steady. Most nearby 100 lb. sacks of No. 1 stock brought 90c to \$1.10 with a few exceptional lots of the Green Mountains selling higher while poorly graded sold as low as 75c. No. 2 stock brought 50c to 66c per 100-lb sack.

Market slow, throughout week demand centered on yearlings and the light weight beef steers scaling 1100 lbs. down. Compared with a week ago, prices fully steady on these. Medium weight and weighty bullocks, weak to 25c lower, bulk of sales 4.00-4.75, top 5.50. She stock steady to weak. Bulls and cutters about steady, bulk fat heifers \$4.00-4.75, medium bulls 3.50-4, butcher cows, \$2.75-3.50, cutters 1-25-2.00. Stockers and feeders receipts light, few sales about steady bulk \$4.00-4.75. Calves strong to 25c higher, top vealers 7.50. Sheep steady, choice lambs \$6.75-7.00. Hogs fairly active, steady, choice 160-220 lb. weights 4.00-4.15, small lots \$4.25.

DANIEL BOONE Pathfinder



You, too, can blaze Safety trails!

The Lancaster Auto Club

The Lancaster Automobile Club in its weekly bulletin urges the drivers to obey stop signs and traffic lights, and to come to a stop when approaching trolley cars or busses receiving or discharging passengers. "When a motorist ap-

proaches a stop sign, a traffic light that is red, or a standing trolley or bus he must, under the law, bring his car to a stop," said S. Edward Gable, president of the Club.

"The temptation to 'jump' the stop sign or the traffic light when no officer is in sight must be suppressed. In driving, whether on a busy street or open road, we are constantly called upon to use judgment. We should always be on the lookout for signals, whether they come from officers of the law, from other drivers, from traffic lights, stop signs or other sources, and should obey them to the letter."

Mr. Gable said that while the great majority of motorists in Lancaster city and county comply at all times with the stop regulations, there are some who obey the impulse to 'jump' the light or the sign when opportunity arises. Many accidents and near accidents are caused in this way, he said.

"When we fail to stop at a stop street or highway, or for a red traffic light or a standing trolley, we not only break the law, but immediately exchange safety for danger," he stated. "Let us always keep in mind that stop means just that, and not merely slow down. If all drivers would take it upon themselves to obey signals and observe the right of way regulations to the letter there would be far fewer accidents on our streets and highways."

Control Potato Diseases
Control of potato diseases will play an important part in the economical production of the 1933 crop, say State College plant pathologists.

Receipts: 229 cattle; 35 calves; 298 hogs; 265 sheep.

Good	Medium	Common	Choice	Good	Medium	Common
52.25-60.00	4.25-5.25	3.25-4.25	5.00-5.75	4.25-5.00	3.50-4.25	2.50-3.50
3.25-4.00	2.50-3.25	1.75-2.50	3.25-4.00	2.50-3.25	1.75-2.50	1.00-1.75
4.00-5.00	2.75-4.00	1.00-1.75	6.75-7.50	5.00-6.75	3.00-5.00	4.50-5.75
2.75-4.00	1.00-1.75	1.00-1.75	3.50-4.00	3.00-3.75	2.50-4.50	3.50-4.00
3.00-3.75	6.75-7.25	4.50-6.00	1.25-3.00			