

e' Cake

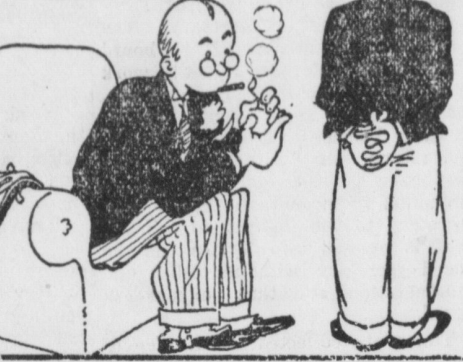
I REPRESENT THE COMPANY. WE UN- WHAT YOU LOST A MOND RING.



'ATS RIGHT

Safely Lost

BUT YOU DIDNT REALLY LOSE THE RING. YOU GAVE IT TO A LADY. ISNT THAT SO?



YEP!

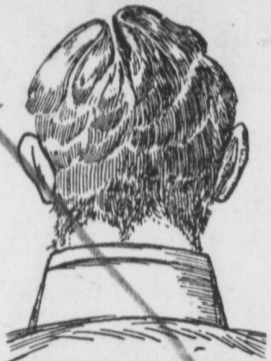
WELL THEN, WHY DONT YOU JUST ASK HER TO GIVE THE RING BACK TO YOU?



By M.B.



I DID!



Avoid looking like this. It pays to look well. ALL HAIR CUTS 35c SATURDAYS 40c Ladies and Children included Weaver's Barber Shop W. Main St., MT. JOY, PA. apr. 6-12

STONE

Before placing your order elsewhere, see us. Crushed Stone. Also manufacturers of Concrete Blocks, Sills and Lintels.

J. N. Stauffer & Bro. MOUNT JOY, PA.

Most Men are Judged by Their APPEARANCE Up to the Minute Styles, By Expert Barber

W. F. CONRAD 30 W. Main St. MT. JOY, PA.

BULL RUNN—It Took Poor Bull So By Surprise That He Didn't Realize He Was Being Buñcoed Until—!



BY CARL ED



O. W. L. (On With Laughter)

No, folks; Poverty is not a crime but a lot of folks now realize that it's a terrible inconvenience.

A Marietta street man said: "Yes, my son, I'm a self-made man."

Boy replied: "That's what I admire about you, Dad. You always take the blame for everything."

A lady on West Main street said to her husband: "It sure hurts me to think how you have changed. You used to catch me in your arms every night."

He replied: "Yes, dear, and to think that now I catch you in my pockets every morning."

Jim Berrier, out at Milton Grove, says there's just one way he knows of that will keep milk from getting sour—leave it in the cows.

Recently some woman from the city asked Jim if their cows give milk. He said: "No we must take it from them."

A few days ago a stranger here went to the post office and asked Calvin Kramer if he had any mail for Mike Howe. Calvin said: "No, we have no mail for your cow or any one else's."

I asked the lady down at Marie's Specialty Shoppe if she knew what makes the Tower of Pisa lean. She replied: "If I knew I'd take some of it myself."

A little boy and girl, brother and sister, on Mount Joy street, wanted to play that they were married when the girl remarked: "Aw, we can't. Ma said we wuz to keep quiet."

"I see by the paper that a college professor says a mosquito can fly 14 hours without settling."

"If that's true why does it stop so often to put in its bill?"

A farmer driving past an insane asylum with a load of fertilizer.

"What are you hauling?" called an inmate.

"Fertilizer," said the farmer.

"What are you going to do with it?"

"Put it on my strawberries."

"You ought to live here. We get sugar and cream on ours."

A local young couple were spooning on the Marietta street school grounds the other night when this conversation was overheard: "I'll be frank with you. You're not the first girl I ever kissed."

She replied: "I'll be equally frank with you. You've got a lot to learn."

A certain chap we know has been so busy lately that he's having his doctor take out only one tonsil at a time.

I know one chap who took it out of a bully we have here. One of our doctors removed his appendix.

I asked a certain young lady here: "What do you do when you see an unusually beautiful lady?" She said: "I look for a while, then I get tired and lay the mirror down."

Here's a good tip, fellows. A man at Florin bought his wife a banjo. He said he is darn sick and tired of having her pick on him.

A chap walked into the Central Cut Rate Store and said: "I want to get some thing for my stomach." The clerk said: "The lunch counter is on the other side."

A chap from here who went to State College was asked what he knew about dairying. He said: "Quite a bit. I kept a diary for over four years."

Now he's back home again.

A WISE OWL

Hydro Power For Washington

NATION'S CAPITAL IS TO RECEIVE ENERGY FROM SUSQUEHANNA THROUGH ARRANGEMENTS MADE BY POTOMAC ELECTRIC POWER CO. FOR INTER-CONNECTION WITH SAFE HARBOR-BALTIMORE SYSTEM.

Washington, July 21, 1932—Negotiations have been successfully completed by the Potomac Electric Power Company through which hydroelectric power will be brought to the Nation's Capital to supplement the supply generated by the steam in the Potomac Company's plants.

The hydroelectric power is to come from the new plant on the Susquehanna River at Safe Harbor, Pa. The development in the art of transmitting large blocks of the Potomac system with the high-tension transmission lines of the Safe Harbor-Baltimore system.

The interconnection will give Washington the advantages of an additional outside source of supply from a large and diversified power system supplementing the local sources of power in the District.

The nearest point to Washington on the 230,000 volt line which brings the Safe Harbor power to Maryland is just west of Elliott City. A 23-mile transmission line will be built from this point to Washington.

Construction of a switching station in Howard County, Md., the fabrication of the steel for the towers, the manufacture of the aluminum cables, their erection and the building of a 100,000 horsepower transformer station, the laying of underground cables, and work in several of the substations that will receive the power in the district, will give employment to hundreds of men. Besides the employment created in the factories which will supply the material and the electrical equipment, several hundred thousand dollars will be expended directly for labor in the erection of the transmission line and auxiliary stations.

Construction will begin within the next few months and it is expected that the river power will be delivered to the Potomac system on or before October 1933.

Use of the new supply of energy by the Potomac Company will be to take care of the peak loads, which will enable the Company to utilize its capacity more uniformly and with better efficiency.

The Safe Harbor development is located in the Susquehanna basin in the river's fall between Columbia and Chesapeake Bay. Safe Harbor is eight miles above Holtwood where the Susquehanna is harnessed by the hydroelectric development of the Pennsylvania Water & Power Company. This latter plant has been in successful operation since 1910 supplying power to public utility systems in Baltimore, Md., York, Lancaster, and Coatesville, Pa.

The new development which was built on the experience gained in the utilization of the Susquehanna at Holtwood and which was designed and is being operated by the same men who placed the Holtwood plant in operation, has been in service since early in December, 1931.

Four generators of 42,500 horsepower each driven by the largest Kaplan turbines ever built in America give a present installed capacity at Safe Harbor of 170,000 horsepower. Foundations are ready for two additional turbines which will bring the initial capacity at Safe Harbor to 255,000 horsepower. The waters impounded in the lake of 10 square miles behind the mile long dam will ultimately drive 12 turbines at Safe Harbor with a total capacity of 510,000 horsepower.

Safe Harbor, connected through

tie lines with the Holtwood development, which has a combined hydro and steam capacity of 180,000 horsepower, is part of the coordinated hydro and steam power system of which the steam plants of the Consolidated Gas Electric Light and Power Company of Baltimore and the Metropolitan Edison Company and of other power companies in Pennsylvania.

The Pennsylvania Railroad has contracted for power from this coordinated hydro and steam system for the electrification requirements of its lines from the Susquehanna Crossing at Havre de Grace, Md., to Washington and environs.

Through the arrangements successfully negotiated by the Potomac Electric Power Company provision is made for an interchange of the power between the 325,000 horsepower plants in Washington, of which the latest addition is now under construction, the steam plants in Baltimore and the developments at Safe Harbor and Holtwood.

The Safe Harbor development is owned by the Safe Harbor Water Power Corporation which was built and financed through the cooperation of the Consolidated Gas Electric Light and Power Company of Baltimore and the Pennsylvania Water and Power Company, these three companies being known as Aldred interests.

The Susquehanna River drains the largest watershed of any of the rivers flowing into the North Atlantic except the St. Lawrence. It forms the headwaters of the Chesapeake Bay into which the Potomac flows 110 miles nearer this estuary's confluence with the Atlantic Ocean. The new transmission line will thus supply energy from the Susquehanna to the Nation's Capital on the Potomac.

Urges Autoists To Co-operate

(From page 1) it is accomplishing much along this line. A car may be in perfect condition mechanically, with every one of the several hundred nuts and bolts in the body, chassis and motor tight but if there's a "loose nut" behind the steering wheel the vehicle is unsafe.

"Statistics gathered by the American Automobile Association in a recent nationwide survey of accident causes show that in 89 percent of the fatal and near fatal accidents during the past year the driver, not the mechanism of the motor vehicle, was at fault. This indicates quite clearly where most of the trouble is and provides a most convincing reason why the State should go a step further in its compulsory inspections and also make sure that the human element behind the wheel, as well as the mechanism of the vehicle, is safe.

What we need is compulsory inspection that will include both driver and vehicle, with ample follow-up facilities to enforce all provisions of the inspection. This could be handled in such a way as to work no hardship on operators, but on the other hand, would give them better protection against the careless and reckless motorist on our streets and highways."

Gold Found in Gizzard Sonora, Cal. When you are being careful not to kill the goose that laid the golden egg, better have thought for the chickens, too. Robert Watson, miner at Brown's Flat, near here discovered a nugget of gold worth \$1.52 in the gizzard of a chicken he was preparing for his Sunday dinner, recently.

When in need of Printing, (anything) kindly remember the Bulletin.

HEALTH TALK

WRITTEN BY DR. THEODORE B. APPEL, SECRETARY OF HPAT

"Self-confidence is happily one of the prominent factors in American life. Coupled with initiative and energy, it has largely been responsible for the many magnificent attainments that can proudly be credited to our country. But it perhaps is well to keep at least a portion of this confidence within the proper limits. And this injunction can not be more reasonably applied than to the diagnosis and treatment of disease," states Doctor Theodore B. Appel, Secretary of Health.

"It is a surprising but nevertheless a too general fact that self-confidence, which weakens before a law suit, a public speech, the handling of investments, the building of houses and other specialized activities, is prone to become surprisingly strong where diagnosis and the treatment of disease are concerned.

"The pity of this attitude lies in the serious illnesses and deaths that frequently result as a cause of it. While the matter of course does not lend itself to accurate statistics, it has nevertheless been estimated that of the major killers such as cancer, tuberculosis, diabetes and heart conditions, many hundreds of victims die prematurely because of carelessness and lack of early diagnosis. Many of such cases would have undoubtedly received professional attention long before they did had it not been for this self-treating complex.

"It is indeed difficult to understand why the average individual who delegates his other affairs of importance to trained specialists, somehow imagines that he is perfectly capable of diagnosing what is wrong with his highly complicated body and of dictating the drugs and procedure to make it well again.

"Like other specialists, whether they be lawyers, automobile mechanics, carpenters on what not, the time, money and experience enter largely into the value of their services. To offset against a college course, a four year medical training, a hospital internship and perhaps a decade of practical experience in healing the sick—to offset all that with a self-measured conceit of one's ability to treat himself, is a folly that is both expensive and foolish. It can lead to serious, even fatal results."

ELECTORS NAMES WILL NOT APPEAR

When voters receive their ballots on November 8, the long lists of the presidential electors that appeared formerly will be missing. The Act of 1931 provides that the names of the candidates of each party for the electors shall not be printed on the ballot but only the names of president and vice-president. A vote in the square opposite shall be for each of the electors of the party marked. A mark in the straight party column, opposite the name of the party of his choice, shall also be counted as a vote for each presidential elector of that party.

If any voter does not wish to cast his ballot for any of the party candidates for President and Vice-President the law makes provision for leaving sufficient blank spaces on the ballot where the names of individual candidates for president and electors may be inserted.

Taxes Separate

Retail gasoline dealers are advised by the State Department of Revenue that the State and Federal gasoline tax must be shown separately on display price cards or signs. For example: Gasoline 15 cents; State Tax 3 cents; Federal Tax 1 cent. Signs reading: "Tax Four Cents" are illegal.

Subscribe for The Bulletin

MUST HAVE PERMIT TO OBTAIN FUNDS FOR PUBLIC CHARITY

The bureau of assistance of the State Department of Welfare recently has received much correspondence from Better Business Bureaus and Chambers of Commerce inquiring into the status of agencies and individuals soliciting funds for charitable purposes.

Under rulings of the Solicitations Act of 1925, agencies soliciting funds in Pennsylvania for charitable purposes, other than those organizations exempt by provisions of the Act, are required to obtain certificates from the Department of Welfare.

Mrs. Martha J. Megee, director of the bureau reports that for many instances investigations have disclosed attempts to exploit present conditions to the advantage questionable charitable organizations and individual promoters.

Certificates of registration have been issued to 93 accredited organizations in the State, authorizing solicitation of funds during the calendar year to aid in carrying on their work. Agencies planning fund campaigns are warned that they must comply with the provisions of this law. Violation constitutes a misdemeanor, punishable by fine or imprisonment, or both.

Map Emphasizes State's Import

(From page one)

Highways, aided in preparing the map. More than 80 of Pennsylvania's beautiful scenic vistas are located 50 public camps, and a score of "points of interest," including the caves and fish-hatcheries.

"I believe the map will bring to Pennsylvanians as well as others a new realization of Pennsylvania's tremendous part in the founding of America and also its scenic and recreational advantages," said Dr. C. Reitel, the Council director. "It will afford many surprises for those not versed in history. How many Pennsylvanians know, for instance, that Daniel Boone, famous wilderness explorer, was born in Pennsylvania.

"Underlying the sketches, many main highway routes are indicated in orange. The map should be used however, in conjunction with the road map of the Department of Highways. Naturally the map is not perfect. We expressly solicit suggestions and corrections for future editions.

"The Council under its budget is not able to publish an edition large enough to meet the probable demand. For this season we will grant permission to any agency which wishes to publish the map, for free general distribution only."

MAKES INVENTORY OF GAME HOLDINGS

The State Game Commission has completed a valuation inventory of lands and buildings under its jurisdiction. The inventory places a value of \$1,359,747.25 on the 320,171.77 acres of State Game Lands owned. The buildings comprising refuge keepers' headquarters, of which there are thirty groups in the state, are valued at \$169,483.00.

The value placed on three game propagation farms, aggregating 1,788.4 acres, is \$71,400.00 for the lands and \$42,555.00 for the buildings, a total of \$113,955.00.

Commission members said the hunters of the state provided every dollar used in acquiring this real estate with a total value of \$1,643,185.25.

The Russians have discovered a drug reported as being capable of causing sheep to shed their fur, which certainly is something of an achievement.



STRENGTH

THE expression, "solid as a rock" was never more apt than when used to describe this Bank. Today, as always, the leading business institutions of our town are affiliated with this strong, safe bank.

Commercial Accounts Invited

FIRST NATIONAL BANK & TRUST COMPANY

MOUNT JOY, PA.

NO TAX ON COAL

On the new excise tax which went into effect Tuesday, there is no tax on coal, but you can save money if you

BUY YOUR COAL NOW

Sold from the yards or trucked as you desire.

Prices as Low as the Lowest

Will accept orders now for Fall delivery. See me before you buy your coal.

Don't fail to learn about my FREE FURNACE CLEANING PROPOSITION.

Harry Leedom

MOUNT JOY, PENNA.

APPEL & WEBER

Your Eyes Are Priceless Guard Them Carefully

If there is any doubt about the condition of your Eye Sight, learn the facts.

For years we have been advertising Eye Comfort to hundreds of Men, Women and Children.

We should welcome an opportunity to serve you.

40-42 NORTH QUEEN ST. LANCASTER, PA.

The Most Modern and Complete Watch Repair Shop In Town

Equipped With—Electric Watch Cleaning Machine, Automatic Crystal Cutting, Grinding and Fitting Machines, also Electric Welding and Soldering Machine for Jewelry Repair Work.

DON W. GORRECHT, MOUNT JOY, PA.

Prices Reasonable