

Neighborhood ASCO Store
 Ready to Supply You With Your Food Requirements
 Our Stores will be closed on Memorial Day—Open late the night before.
 "Where Quality Counts"

Three cans for the Price of Two!
 Reg. 12 1/2c PORTOLA Brand Big Oval SARDINES 25c
 Reg. 25c Armour's or Libby's COOKED CORNED BEEF 2 Cans 45c

Delicious Beverages!
 *ASCO Ginger Ale } 3 pint bottles 25c
 or Sarsaparilla.
 *Rob Roy Pale Dry Ginger Ale bottle 11c
 *Hires' Carbonated Root Beer bot 10c
 Clicquot Club Ginger Ale bot 14c
 Pale Moon Beverage 3 bots 50c

Clicquot Club SEC or Canada Dry Ginger Ale 3 bottles 50c

SWEET JUICY ORANGES doz 35c 37c
 JUICY LEMONS doz 20c

New Crop Sweet Tender PEAS 3 cans 28c
 Unusually Big Value.

For Good Sandwiches!
Victor Bread Pan Loaf 5c

Bread Supreme ... Big Loaf Wrapped 8c
 MILD CURED CHEESE 1b 27c
 Very Tasty and Quality A 1.

Choice Suggestions!
 Asco White Tuna Fish can 35c
 Light Meat Tuna Fish can 14c 20c
 Norse Boy Imported Sardines can 15c
 Tasty Potted Meats 5c 9c
 Asco Queen Olives bot 10c 20c
 Asco Stuffed Olives bot 12c 23c
 Underwood's Deviled Ham 3 cans 25c

Reg. 14c ASCO Finest TOMATOES 2 cans 25c
 FARMDALE TENDER PEAS 2 cans 25c
 Reg. 13c Blue Dot Tender LIMA BEANS can 10c

ASCO Coffee
 The Blend Supreme!
 1b 39c
 Easily 49s Quality. You Save 10c.

These Prices Effective in Our MOUNT JOY STORE

Produce and Live Stock Market

CORRECT INFORMATION FURNISHED WEEKLY BY THE PENNA. BUREAU OF MARKETS FOR THE BULLETIN

Receipts of asparagus from nearby states were liberal on the local market today and prices dropped sharply. The warmer weather was partly responsible for the increased supply. Very large green stock sold at \$3.50 to \$4.25 per dozen bunches with a few exceptionally fancy lots higher. Large brought \$2.50 to \$3.25, Medium \$2.00 to \$2.75 and small \$1.00 to \$1.75, according to the Pennsylvania and Federal Bureaus.

Old potatoes were steady with moderate offerings and a fair demand. Pennsylvania round whites brought \$1.75 per 120 pound sack, while Maine Green Mountains sold at \$2.00 to \$15. New potatoes were slightly weaker and the best South Carolina Cobblers sold at \$5.75 to \$6.00 per barrel while Georgia stock showing some decay brought \$4.50.

Most receipts of strawberries were in poor condition and the market and this stock was weaker. Truck receipts of New Jersey berries sold at \$2.25 to \$4.00 per 32 quart crate, with a few bringing \$4.25 to \$4.75. Truck receipts of Maryland and Delaware berries brought \$2.00 to \$4.50 with some express receipts selling as high as \$5.00 to \$5.25.

Green vegetables were generally dull. Spinach sold slowly at 30c to 50c per bushel, escarole at 30c to 60c, kale at 15c to 40c and broccoli at \$1.00 to \$1.10. Rhubarb was in light supply and the market improved. Prices ranged from \$1.50 to \$3.50 per 100 bunches while spring onions sold at \$1.50.

Sweet potatoes continued firm at \$1.25 to \$2.75 per bushel while parsley was steady at \$1.50 to \$2.25. Radishes were weak and sold at 50c to 85c per bushel. Apples were firm with nearby Romes and Winesaps selling at \$2.00 to \$2.50 per bushel. The first sour cherries of the season were received from Virginia and sold at \$4.00 per 24 quart crate.

Range of Prices

STEERS	
Good	\$12.75-13.75
Good	\$13.00-14.00
Good	\$13.00-14.00
Medium	\$12.00-13.00
Common	8.75-12.00
HEIFERS	
Choice	11.25-12.00
Good	\$10.50-11.25
Medium	9.50-10.50
Common	7.75-9.50
COWS	
Choice	9.25-10.00
Good	8.25-9.25
Common & medium	6.75-8.25
Low cutter & cutter	4.00-6.75
BULLS	
Good & choice (beef)	10.50-11.75
Cutter, common & med.	7.75-10.50
FEEDERS AND STOCKERS	
Good and choice	10.50-12.00
Common & med.	7.75-10.50
Good and choice	10.25-11.75
Common & med.	7.50-10.25
VEALERS	
Good and choice	\$14.00-16.50
Medium	\$12.00-14.00
Cull and common	\$7.50-12.00
HOGS	
Heavyweights	\$11.00-12.00
Mediumweights	\$12.00-12.50
Lightweights	\$12.00-12.50
Packing sows (rough and smooth)	\$8.25-11.00

Lancaster Grain and Feed Market
 Selling Price of Feeds

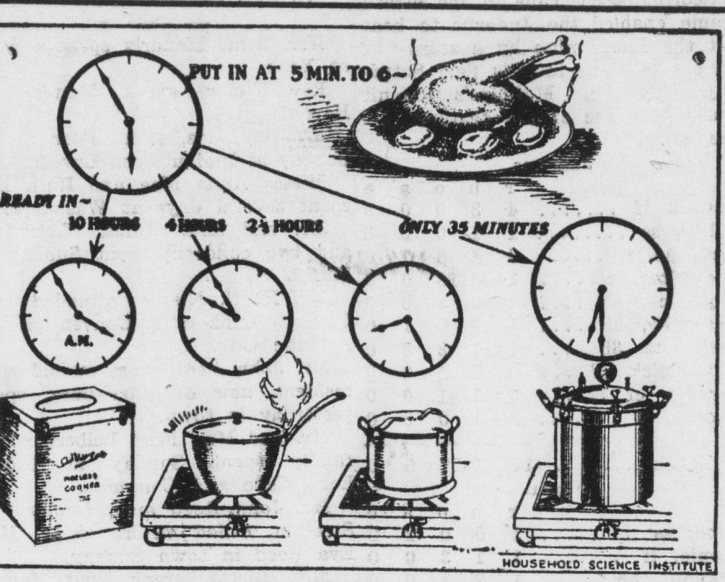
Bran	\$35.00-36.00 ton
Shorts	\$34.50-35.50 ton
Hominy	\$44.00-45.00 ton
Middlings	\$40.00-41.00 ton
Linseed	\$59.50-60.50 ton
Gluten	\$46.00-47.00 ton
Ground Oats	42.00-43.00 ton
Soy bean meal	62.00-63.00 ton
Cottonseed 41%	\$49.00-50.00 ton
Dairy Feed 16%	\$37.00-38.00 ton
Dairy Feed 18%	\$39.50-40.50 ton
Dairy Feed 20%	\$46.00-47.00 ton
Dairy Feed 24%	\$51.00-52.00 ton
Dairy Feed 25%	\$52.00-53.00 ton
Horse Feed 85%	\$46.50-47.50 ton
Alfalfa (Regard)	\$43.50-44.50 ton
Alfalfa (Regard)	\$46.50-47.50 ton

British Monarch's Title
 James I wished to use the title of "King of Great Britain" instead of "King of England and Scotland," and even went so far as to have it placed on his coins. In 1604 he asked parliament to consent to the new title but fears were expressed lest the laws and liberties of England might be jeopardized and the commons urged that some agreement as to the terms of union precede assumption of the title. James finally yielded to the advice of his minister Robert Cecil, and the change was deferred. The title did not receive parliamentary sanction until the Act of Union, 1707.

Regiment's Wooden Sword
 Whenever the Tenth Infantry of the United States army appears on parade either at its home station, Fort Thomas, Ky., or in Cincinnati, near by, one noncommissioned officer always marches along carrying a wooden sword. This sword was carved from a tree which still stands at Devil's den, on the Gettysburg battlefield, where the forerunners of the present regiment took part in the decisive struggle. The sergeant who has served longest in the regiment is accorded the honor of carrying the sword.

Short Maple Season
 The maple products season in Pennsylvania this spring lasted only a little more than two weeks, one of the shortest on record. Preliminary estimates of production show only about 50 per cent. of the usual total.

Stewed Chicken in 35 Minutes
 Most Economical Way Is to Cook Bird in Steam Pressure Cooker.



A stewed chicken has many reasons for appearing on the table at frequent intervals. Not only is it less expensive than a roasted chicken, but it is usually larger, which is an advantage for the big family. Also, cooking a chicken this way provides an abundance of rich, delicious chicken broth which can be made the foundation of another meal.

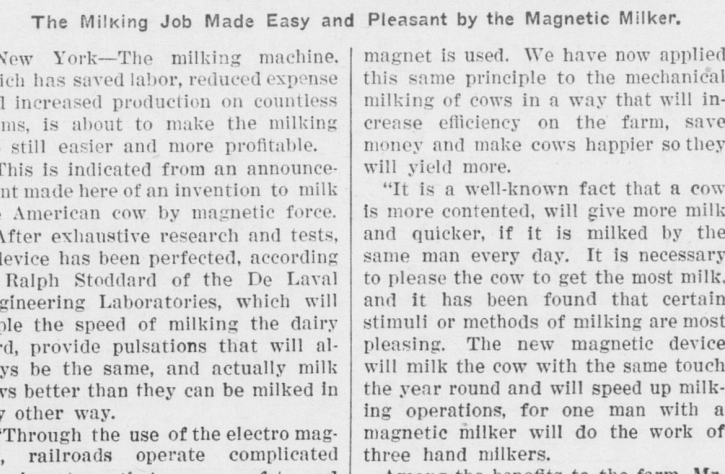
But stewing a chicken takes so long, women often say. That depends upon the way it is cooked. If a fireless cooker is used, ten hours will be required. This means putting the chicken on at eight in the morning for a six o'clock meal.

Then there is the old-fashioned stewing kettle. This method takes only four hours, but care must be taken that it does not boil dry. Moreover, the escaping steam allows a great deal of valuable mineral salts and flavor to escape.

Stewing a chicken in a waterless cooker is an improvement in time over the other two ways, since it requires only two and a half hours, but the most rapid and economical way of all is to cook the bird in a steam pressure cooker, which takes only thirty-five minutes. Put on at five minutes of six, the chicken is thoroughly cooked and tender and ready to serve by six-thirty. None of the flavor will be lost. The saving in fuel cost will be from a fifth to an eighth that of cooking by the other methods.

At the same time, peas and potatoes can be cooked in separate dishes above the chicken. Serve an aspic or tomato salad with this dinner and a light dessert.

MAGNETIC MILKER PLEASURES COW; SAVES WORK, MONEY



The Milking Job Made Easy and Pleasant by the Magnetic Milker.
 New York—The milking machine, which has saved labor, reduced expense and increased production on countless farms, is about to make the milking job still easier and more profitable.

This is indicated from an announcement made here of an invention to milk the American cow by magnetic force. After exhaustive research and tests, a device has been perfected, according to Ralph Stoddard of the De Laval Engineering Laboratories, which will triple the speed of milking the dairy herd, provide pulsations that will always be the same, and actually milk cows better than they can be milked in any other way.

"Through the use of the electro magnet, railroads operate complicated signal systems that assure safety and swift operation of trains," said Mr. Stoddard. "In the great pipe organs, electro magnets control the hundreds of valves. In the telegraph, telephone, steel and one crane—wherever positive control, lightning speed and dependability are needed—the electro magnet is used. We have now applied this same principle to the mechanical milking of cows in a way that will increase efficiency on the farm, save money and make cows happier so they will yield more."

"It is a well-known fact that a cow is more contented, will give more milk and quicker if it is milked by the same man every day. It is necessary to please the cow to get the most milk, and it has been found that certain stimuli or methods of milking are most pleasing. The new magnetic device will milk the cow with the same touch the year round and will speed up milking operations, for one man with a magnetic milker will do the work of three hand milkers.

Among the benefits to the farm, Mr. Stoddard pointed out that generally speaking, the magnetic milker saves half the time of milking, which in the aggregate will mean the saving of millions of dollars, or millions of extra hours for doing other farm work and for rest and recreation.

Years of service in MODEL T FORDS

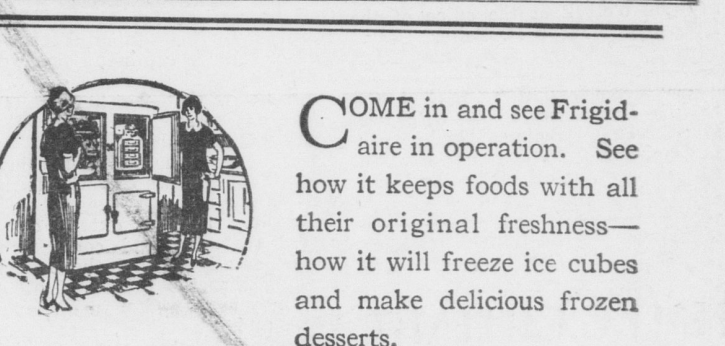
THE Model T was so strongly and sturdily built that it is still rendering reliable, economical service to motorists in every section of the country. Millions of these cars can be put in shape for two, three and five more years of use at very small cost.

So that you may have this work done economically and satisfactorily, the Ford Motor Company is still devoting a considerable section of its plants to the manufacture of Model T parts. It will continue to do so as long as they are needed by Model T owners. The following list gives the approximate labor charges for reconditioning the Model T Ford—

Engine	
Tune motor (including replacement of commutator case, brush and vibrator points if necessary)	\$1.00
Grind valves and clean carbon	\$3.75 to 4.00
Overhaul carburetor	1.50
Refine detachable car transmission bands	1.50
Install new pistons or connecting rods	6.00
Tighten all main bearings	6.00
Overhaul motor and transmission	\$20.00 to 25.00
Rear System	
Replace rear axle assembly	2.50
Install universal joint	3.00
Refine brake shoes	1.50
Replace rear axle shaft, drive shaft pinion, or drive gear	5.00
Overhaul complete rear axle assembly	\$5.75 to 7.00
Rebush spring and perches	1.75
Oil and graphite springs	3.00
Front System	
Overhaul front axle	\$4.00 to 5.00
Rebush spindle bodies and arms (both sides)	2.50
Replace or straighten spindle connecting rod	.75
Tighten all sockets and joints of front end	.50
Replace front spring tie bolt or new leaf	1.50
Straighten front axle	3.00
Chassis	
Replace rear fender	1.75
Overhaul steering gear	2.50
Repair muffler	1.00
Overhaul radiator	7.50
Repaint Coupe	25.00
Repaint Sedan	25.00
Repaint Touring Car	20.00
Reupholster Runabout	8.00
Reupholster Touring Car	15.00
Replace top deck (Coupe or Sedan)	4.00
Overhaul starting motor	3.00
Overhaul generator	2.60

These prices are approximate and are for labor only, because the need and number of new parts depend on the condition of each car. The charge for these parts is low, however, because of the established Ford policy of manufacturing and selling at a small margin of profit.

FORD MOTOR COMPANY



COME in and see Frigidaire in operation. See how it keeps foods with all their original freshness—how it will freeze ice cubes and make delicious frozen desserts.

C. E. Hollenbaugh
 PHONE 58R2
 MAYTOWN, PA.

Frigidaire ELECTRIC REFRIGERATION

THE COUNTRY NEWSPAPER OF GREAT VALUE ACCORDING TO STATEMENT OF NOTED EDITORIAL WRITER—PROVEN BY FACTS

Arthur Brisbane, one of the best minds of the time, says:
 "H. Z. Mitchell's 'Sentinel,' published at Bemidji, Minn., wins the prize as best weekly in the National Editorial Contest. This is a good time to remind the public in general, and national advertisers in particular, that country weekly newspapers are the most important organs of public opinion and protectors of public welfare."
 "And, their advertising per mill line, is not excelled by any publication, of any kind."
 "The reader of a country weekly buys everything from shingles on the roof to cement in the cellar floor, and every advertiser has in him a possible customer."

THE OFFICES OF
JOHN A. HIPPLE
 Attorney-at-Law
 Formerly, 40 North Duke St., Lancaster, Pa.
 Are Now Located at
 RHEEMS, PENNSYLVANIA
 Telephone: Elizabethtown 66-R2

Read The Bulletin

Now Is The Time For AWNINGS

We carry a complete line of Awnings for every ones need

Let us quote you a price for your Awnings

H. S. Newcomer
 Mount Joy, Pa.

Read the Bulletin