

FINNEY OF THE FORCE

By F. O. Alexander
© Western Newspaper Union



THE OLDEST HAT STORE IN LANCASTER

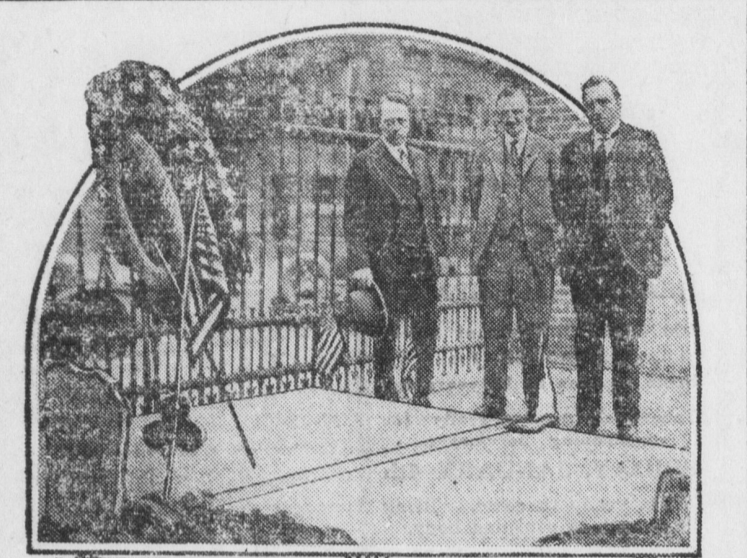
Wingert & Haas Hat Store

Winter Hats
Have Arrived in Various Colors and Shapes

PLAIN HATS A SPECIALTY

JNO. A. HAAS, Propr.
144 N. Queen Lancaster, Pa.

BRITISH TELEPHONE OFFICIALS AT BENJAMIN FRANKLIN'S GRAVE



Two executives of the General Post Office, London, are shown with Leonard Ormerod (hat in hand), an official of the Bell Telephone Company of Pennsylvania at the simple tomb of America's first Postmaster General during their recent visit to Philadelphia to study American telephone methods.

DANZIG NOW TALKS WITH U. S.



The smallest autonomous state in Europe—a typical street scene is shown above—recently was connected with the United States by the trans-Atlantic radio telephone, as were Vienna, Capital of Austria; Budapest, Capital of Hungary, and Prague, Capital of Czechoslovakia. More than 26,000,000 of the world's telephones are now inter-connected.

U. S. Department of Agriculture

VERY USEFUL INFORMATION THAT SHOULD BE READ BY EVERY RURAL RESIDENT

U. S. Dept. of Agriculture.
Drain or fill in wet areas on the farm. Such places breed parasites injurious to livestock.
Rabbits can be cooked in any of the ways chicken is cooked—fried, baked, en casserole, or fricassee. Have them often while the season lasts.

Jerusalem artichokes are plentiful in wintertime. They may be scraped, and cooked in the casserole with butter and other seasonings, or used raw, in very thin slices, in salad or as a side dish, such as celery is used.

It is often more economical for the dairyman with only a few cows to use root crops as a winter succulent feed, than it is to use silage, since the capital investment for silage is larger than for root crops.

Raise either chickens or turkeys, but not both unless they are kept well separated. Chickens and turkeys are a bad mixture, as turkeys convey gapeworms to chickens, and chickens give blackhead to turkeys.

Farmers' Bulletin 1523-F, "Leather Shoes," will give you some good suggestions on caring for shoes, especially in the rainy and snowy weather. Several formulas are included for waterproofing the shoes.

Methods of controlling the corn earworm, the most generally destructive of all insect enemies of corn, are crop rotation, fertilization, the use of legumes, and other measures which increase the productivity of the land. To plant corn on poor land is to invite severe earworm injury.

Have spare ribs and sauer kraut for a change. Select 2 milt-padded ribs. Wash and cut the milt pieces suitable for serving. Cook for about an hour with 1 quart of sauer kraut in sufficient water to cover. When tender drain off the liquid and serve.

The ideas that a venomous snake can strike its full length or more, and that it can not strike except from a coiled position, are popular but erroneous beliefs, biologists of the U. S. Department of Agriculture state. Most of our poisonous snakes, when irritated, can strike from any position, and the greatest length of stroke is about three-fourths their own length.

Many hens in farm flocks are like women—no one knows their age. Often they are kept in the flock long after they are profitable. Culling of old hens is advised by U. S. Department of Agriculture poultry specialists, particularly in the Corn Belt, where the tendency is to keep poultry too long for good egg production. All pullets should be marked in the fall and a record kept of their age.

Boiling water or hot cloths are effective treatments for frozen water pipes. Always thaw pipes toward the supply, opening a faucet to show when the flow starts, advises the U. S. Department of Agriculture. Never thaw the middle of a frozen pipe first, because expansion of the water confined by ice on both sides may burst the pipe.

Turkey feathers, when properly prepared, are quite valuable and command good prices—a good reason for saving them. These feathers are marketed principally in the East, says the U. S. Department of Agriculture, the quill feathers being used for feather dusters and the down feathers for beds and pillows. Dry pluck the turkeys and thoroughly dry and air the feathers before packing. Turn them often while drying and separate the quill feathers from the others.

Avoid snowy or rainy days for hauling and loading alfalfa hay, if you would, you would have it arrive at the market in good condition, says the U. S. Department of Agriculture. Even hay that has been properly cured and sweated is likely, if it becomes wet from snow or rain while being hauled and loaded for shipment, to arrive at the market in poor condition and with a resulting lower sale value. Hay that has become wet

in this way will sometimes develop mold or heat in transit even at freezing temperatures.

A good poison wash for young trees, which will quickly kill any rabbits attacking them, can be made of starch, glycerin, and strychnine, according to the Biological Survey of the U. S. Department of Agriculture. Dissolve 1 ounce of strychnine (sulphate) in 3 quarts of boiling water, and dissolve 1-2 pound of laundry starch in 1 pint of cold water. Stir the starch solution into the strychnine liquid and boil the mixture until clear. Then add 6 ounces of glycerin and stir thoroughly. Let the mixture cool before applying it to the trees. Use a paint brush.

Here's a recipe for an easily made potato soup, from Bureau of Home Economics, U. S. Department of Agriculture: Cook 2 cups of raw diced potato in one quart of boiling water until soft. Drain off the water and save it. Rice the potato. Heat 2 cups of milk in a double boiler with 1-2 an onion, sliced. Meantime cook 2 tablespoons finely chopped parsley in 4 tablespoons of butter, add 2 tablespoons of flour, and stir until well blended. Pour in 2 cups of the water that was drained from the potatoes, add the rice potatoes, stir until smooth and cook for 2 or 3 minutes. Mix with the hot milk. Season. Remove the onion before serving.

The most effective means of reducing disease infestation of muskmelons, or cantaloupes, is crop rotation, and the best rotation is one in which the melon or other related vine crop is not planted oftener than once in 5 or 6 years. Land that has been in alfalfa or clover, or in a pasture for a period of years, is most likely to be free from muskmelon-disease organisms. Muskmelons should not as a rule follow corn or any crop that draws heavily on nitrogenous plant-food in the soil. In the western sections of the best yields can be obtained on old alfalfa land. In the eastern sections clover or alfalfa sod or land where annual legumes grown as cover crops have been turned under is best. In market-garden districts muskmelons can be grown on land that has previously been in potatoes or sweet potatoes followed by a cover crop.

U. S. Dept. of Agriculture
The time to control the San Jose scale in apple orchards is during the dormant season, advises the U. S. Department of Agriculture. Summer sprays must of course be much weaker than dormant sprays in order to avoid injury to the foliage and fruit, and thus they only partially check the scale insects. Thorough spraying in the dormant season with a two per cent or three per cent lubricating oil emulsion should clean up bad infestations. If the trees are infested with the scale it is advisable to make two applications, the first in the fall as soon as the leaves have dropped, and the second in the spring before the buds swell to any extent. Soft water should be used in the spray if possible, but if hard water must be employed a weak Bordeaux mixture at the rate of 1-4 1-4 50 should be added to the spray to prevent breaking down of the emulsion. The spray should be cleaned with a caustic soda solution before using an oil emulsion. To kill the scale the trees must be completely coated with the spray, and days should be selected when the wind will not interfere with the work. The hose should be of sufficient length so that the spraying of a given tree may be accomplished thoroughly before leaving. Care should be taken not to conduct spraying operations when the temperature is so low that the spray will freeze on the trees, and emulsions and other spray materials should be kept where they will not freeze.

Promoted Copyright Law
Noah Webster, the dictionary maker, was the first American to benefit by the copyright laws. In 1783 Webster published "A Grammatical Institute of the English Language." He described it as "an elementary book for facilitating the acquisition of our vernacular tongue and for correcting a vicious pronunciation which prevailed among the common people." The first part was known as "Webster's Spelling Book." It is still in print and has sold over 60,000,000 copies. Shortly after the publication of this book Webster made a tour of the southern states in the interests of a copyright law. The federal copyright law was passed in 1790. It was especially appropriate that the first author to take advantage of this law should have been one who labored to promote it.—Mentor Magazine.

Penna. Weekly Industrial Notes

Washingtonville—A new Community Hall dedicated here.

Honesdale—Bell Telephone Co. is laying lines underground on Church and Park streets.

DuBois—Montgomery Ward & Co. will locate new store here in near future.

Pittsburgh—Construction started on new \$175,000 Waverly Presbyterian Church.

Columbia—\$3,000,000 publicly owned bridge planned to span Susquehanna River from here to Wrightsville.

Catasauqua—New building for St. Mary's Catholic Church was dedicated Dec. 16.

Charlertoi—Southern Furniture Co. opens new building at Sixth Street and Fallowfield Avenue.

Sellersville—Site selected for the construction of consolidated Sellersville and Perkasie School.

Catasauqua—Several streets improved here.

Northampton—The Lehigh Telephone Co. will construct new telephone building at 16th street and Washington Avenue.

Parkasie—Plans completed for improvement of public playgrounds.

Hatfield—New concrete culvert constructed for Reading Railroad north of this place.

Kittanning—Plans completed for new bridge across Allegheny River here.

Phoenixville—Pa. General Transit Co. seeks permit to operate bus line between here and Frazer.

Phillipsburg—Associated Gas & Electric Corp. moves into new quarters.

Sheffield—Contract let for construction of bridge over Two Mile Creek on Horton Avenue.

Duquesne—North 2nd Street property owners petition council to have telephone and light wires placed underground.

Duquesne—New boilers installed at Carnegie Steel plant.

Philadelphia—\$500,000 approximately will be expended for erection of warehouse for Stern & Co. at 6th Street and Glenwood Ave.

St. Mary's—Construction progressing on new garage building on Brussels street.

Muncy—New highway opened from State Highway to Administration building of Muncy State Home.

St. Mary's—New equipment installed at Elk County General hospital.

St. Mary's—Construction work progressing on new post office bldg St. Mary's—St. Mary's-Weedville road paving project completed.

Middletown—Another new hangar will be built at local airport.

Kittanning—Contract let for Lock No. 7 at this place.

Clarion—Bids opened for building training school at Clarion Teachers College.

New Wilmington—Construction work nearly completion on new Cemetery bridge over Hogback Run.

Brookville—New milk plant of Harmony Creamery recently opened.

Carbondale—Albert H. Crane Memorial Armory recently completed here at cost of \$50,000.

Conshohocken—New chemical apparatus purchased by George Clay Fire Co. of West Conshohocken.

Marietta—Officials of Susquehanna River Road Association recently met here to discuss paving of River Road from Middletown to Washingtonboro.

New Wilmington—Fire company reorganized here.

Millersville—Contract let for erection of new teachers' training building in connection with the Teachers' Training College here.

Lancaster—Low bid of \$359,900 received for construction of new post office which will be erected at Prince and Chestnut streets.

Lancaster—New \$800,000 Pa. Railroad station here will be opened about April 1st.

Lancaster—Paving on Lincoln Highway completed to Mountville.

Littlestown—New concrete steel viaduct over tracks of Pennsylvania Railroad at Stony Brook opened to traffic.

Ambridge—Beaver county completes all highway improvements for this year and makes preparations to keep highways in county open during winter months.

Ambridge—Spang-Chalfant Co. will erect \$400,000 addition to local Seamless tube plant.

Harrisburg—State Highway Department opens bids for nine road projects throughout state.

Mount Pleasant—New Posters and Penn Building completed on Main and Silver streets at cost between \$25,000 and \$30,000.

BUY A HOUSE--PAY AS RENT

Instead of throwing rent money away, as that is practically what the renter does as he never has anything to show for money spent, let it apply on the purchase price of a home.

I Have a 6-ROOM HOUSE AT FLORIN

ALL MODERN CONVENIENCES

WILL SELL AT ACTUAL COST

Will accept very small down payment and balance in monthly installments, same as rent.

If interested, call or phone

Jno. E. Schroll
MOUNT JOY, PA.

COAL

FOR GOOD, CLEAN COAL

You want coal that burns and is free from stone, clinkers, etc. A trial will readily convince you that it pays to buy good coal. Prices very reasonable.

GIVE S. & H. GREEN TRADING STAMPS WITH CASH SALES ONLY

HARRY LEEDOM
MOUNT JOY, PENNA.

Telephone 5R5

SAYING
"Good Bye"
TO THE
Old Year

THE OLD YEAR is closing its page of achievement. We are glad to write down our appreciation of your friendship and the joy we have had in serving you. To help you prosper in, we feel, the best way to help the community grow.

First National Bank
Mount Joy, Pa.

Capital \$125,000 Surplus \$229,000

This Week Only

We have a Special Price on
SCHRAFFT'S BLUE BANNER CHOCOLATES
STRICTLY FRESH

A Full Supply of **BACHMAN'S CHOCOLATES**
Including 5-lb Bricks with Almonds or Plain

A Complete Line of
CIGARS, BY THE BOX
CIGARETTES BY CARTON
TOBACCO IN ANY QUANTITY
Almost Any Kind

Just Received Another Lot **Dr. Plum's Pipes**
PIPES of Almost Any Kind
Prince Albert, Velvet, Sir Walter Raleigh
In 1-lb. Jars and Tins

H. A. DARRENKAMP
3 Doors East of Post Office MOUNT JOY, PA.

Garden Spot Tea Room
HARRY THOMAS, Propr.

Every Thursday Evening there will be a competent instructor present to instruct all who want to learn to dance.

REGULAR DANCING EVERY FRIDAY EVENING
Music by a Good Orchestra

We Cordially Invite You to Attend

CLARENCE SCHOCK
MOUNT JOY, PA.

WE ASK FOR YOUR PATRONAGE WE GIVE SERVICE

LUMBER-COAL