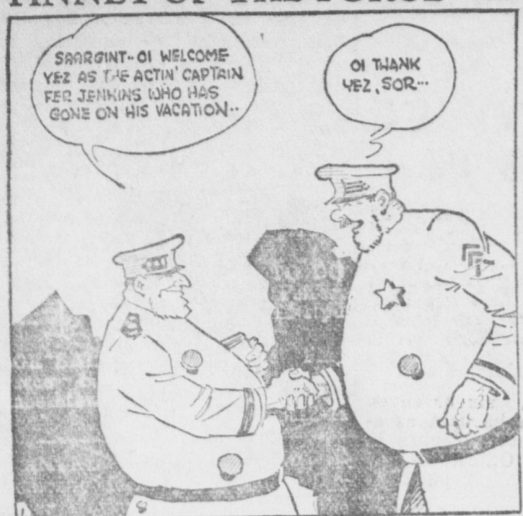


FINNEY OF THE FORCE

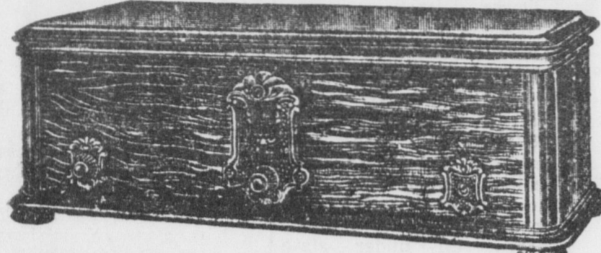
By F. O. Alexander



Nothing to Report

THE OLDEST HAT STORE IN LANCASTER Wingert & Haas Hat Store Fall Hats have Arrived in Various Colors and Shapes PLAIN HATS A SPECIALTY JNO. A. HAAS, Propr. 144 N. Queen Lancaster, Pa.

Announcing RCA Radiola 60



The famous Super-Heterodyne

Now with powerful AC Tubes

No matter what set you now have you owe it to yourself to hear this new Radiola—one of the greatest advances made in radio to date. Come in today and let us demonstrate it to you—no obligation.

H. S. Newcomer & Son Mount Joy, Pa.

Announcement

I am desirous of informing the public that I have embarked in

PLUMBING AND HEATING

had many years experience in solicit a share of your patronage my work. Hoping to receive your service.

L. Heisey FLORIN, PENNA.

NEWSPAPER OF GREAT VALUE NO STATEMENT OF NOTED WRITER—PROVEN BY FACTS

one of the best minds of the 'Sentinel,' published at wins the prize as best weekly Editorial Contest. This is a ad the public in general, and is in particular, that country are the most important oration and protectors of public advertising per mill line, is not lication, of any kind. a country weekly buys every- on the roof to cement in the very advertiser has in him a

POULTRY FARM FOR SALE—A fine 7-room stucco house with all modern conveniences, 6 acres land, 9 poultry houses ranging in size from 10x10 to 16x100. Will sell with or without poultry and equipment. Call, phone or write JNO. E. SCHROLL, Phone 41R2, Mount Joy, Pa. notv30-1f

NEW HOUSE CHEAP—I have a 6-room House along the trolley at Florin that I want to sell before April 1st. Has all conveniences and will sell for only \$3,650 for a quick sale. This is No. 371 in my list. Jno. E. Schroll, Realtor, Mt. Joy.

The Mt. Joy Bulletin costs only \$1.50 per year.

Ice Cream, Groceries and Confections BRANDT BROS. Mount Joy Street Mount Joy, Pa.

Virgin Timber In Penn's Woods

SOME TREES WERE GROWING HERE BEFORE ARRIVAL OF COLUMBUS—MUCH IS STATE OWNED

The forest primeval immortalized by Longfellow in "Evangeline" is no longer present in Pennsylvania, but scattered thru-out the State are numerous tracts of virgin forest which are still standing.

Officials of the Pennsylvania Department of Forests and Waters, in pointing out that there may be found in the State today only a few examples of the virgin forest that once covered practically all the mountains and valleys of the Keystone State, called attention to the following areas where big timber may be seen to advantage.

The Snyder-Middleswart State Forest Park—This is the largest body of original growth big timber in the State forests of Pennsylvania. It comprises 425 acres of original hemlock, pine and hardwoods, mostly virgin timber. Two hundred and fifty acres have never been touched with the ax. The park is provided with camping facilities and visited by thousands of tourists annually. It is located on the Bald Eagle State Forest about five miles west of Troxville, Snyder county.

Detweiler Run State Forest Monument—This tract of 50 acres comprises a tangle of giant original forest trees, mostly white pine and hemlock, with an understory of almost impenetrable rhododendron. Students of early forest conditions declare that it pictures very truly the primeval forest conditions of the State. This forest monument is located at the headwaters of Detweiler Run, Huntingdon county, on the Logan State Forest.

Record Hemlocks

Alan Seeger State Forest Monument—Within this monument are hemlock trees of unusual size and beauty—undoubtedly some of them growing when Columbus discovered America—and there are stands of oak that have no superior in the state. Magnificent growth of rhododendrons, some with stems forty feet high, border the streams that pass through this area of 155 acres along Stone Creek, in Huntingdon county. It is accessible over good roads from Altoona on Huntingdon via McAleyses Fort; from State College by way of Bear Meadows, and from Milroy and Reedsville.

Joyce Kilmer State Forest Monument—Comprises about twenty-one acres of old hemlock, a few white pine and many mature hardwoods, situated on the north slope and top of rugged White Mountain, Union county, in the Bald Eagle State Forest. To see this timber close at hand one must be a real mountain climber. A splendid view of it can be obtained from passing trains at Paddy Mountain Station, on the Pennsylvania Railroad.

Rock Scenery

McCormell's Narrows State Forest Monument—Contains some of the most magnificent rock scenery in Pennsylvania as well as stands of superb original hemlock and white pine. Colonel Henry W. Shoemaker, of the State Forest Commission, states that "the rocks are of colossal proportion, some standing erect like chimneys, and among these giant boulders are vast fissures and enormous subterranean caverns, in which the wild animals find shelter and seek refuge. The giant rugged trees present a beautiful silhouette against the sky. It is a picture that, once seen, will never be forgotten." The area is on the south slope of White Mountain, Union county, opposite Cherry Run Station. It may be reached over the road thru Laurelton and Weikert, which branches off at the Lewisburg-Bellefonte State highway one and one-half miles west of Hartleton.

Mount Logan State Forest Monument—Covers forty-seven acres on Mount Logan, Clinton county. The inaccessibility of the giant trees saved them from the lumberman's ax. Less than one mile from Youngdale Station (McElhattan) on the New York Central Railroad, is an excellent trail leading to the top of Mount Logan.

Martin's Hill State Forest Monument—Comprises nine acres of old original hemlocks within a gorge of one of the highest mountains in Southern Pennsylvania. These hemlocks were preserved

Health Talk

WRITTEN BY DR. THEODORE B. APPEL, SECRETARY OF HEALTH

"At this season of the year the call of the wild is particularly alluring. And for that reason thousands of Pennsylvanians are now seeking cool and attractive spots in the wooded and open spaces of the Commonwealth. In this connection, everything is being done by the State Health Department and local officials to insure a maximum of benefit with a minimum of risk," said Dr. Theodore B. Appel, Secretary of Health, today.

"However, there are many matters which health officials can not control, not the least of which is that peculiar affliction to which so many people are acutely sensitive namely, ivy poison.

"The other day a young woman, on pleasure-bent, sought the cool fastness of the woods and a few days later was literally a painful sight to behold. Ivy poison had captured her, made her ill and put her definitely out of the running for some days.

"The strange thing about this particular case is that she is a repeater. Each year her enthusiasm for the wooded spaces urges her to take chances, and each year she is victimized by the insidious ivy vine. All of which might be excusable save for the fact that a thorough cleansing with soap and water immediately after exposure would in all probability have defeated the ivy. And this fact she knew well—merely another example of carelessness where health was concerned!

"Of course, there are many or less effective. But is it not and the majority of them are more kinds of treatment for this trouble, rather foolish to permit matters to come to the point where treatment is required merely because one neglects to apply a liberal amount of soap and warm water as soon as the suspected exposure has occurred?

"The fact that this preventive is so common and utterly lacks the appeal to the imagination associated with high sounding names and highly ornate bottles, does not in the least effect its potency. The prevention of ivy poison requires no pills nor fanciful packages. Therefore, throttle it before it gets a start. Wash away possible infection. A little extra trouble perhaps, but it will show results."

HAWK FINDS TURTLE MAKES GOOD TAXI

Visitors at county fairs where the animal exhibit of the State Game Commission is being shown are seeing a new adaptation of the old fable of the tortoise and the hare.

A marsh hawk, confined in a cage with several turtles and unable to demonstrate the swift manner in which it can cover space, has learned to be contented with the speed of one of its cage mates.

While confined in the offices of the Commissioner here one of the turtles and the hawk apparently became friendly. Finally the hawk, instead of walking about the cage, spent most of its time perched on the turtle's back. Now the hawk seems satisfied with the slow method of transportation and depends almost entirely upon the movements of the turtle to get about the cage.

If people thought much about the laws, the laws would have harder sledding.

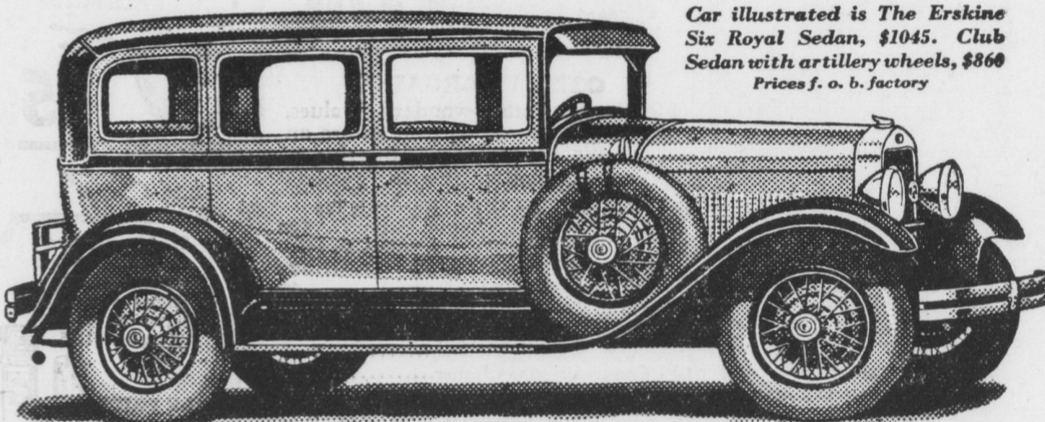
Largely through the efforts of Captain J. G. Dillin, of Media, who lumbered over these mountains thirty years ago. The Martin's Hill Monument is 3075 feet above sea level. On its summit is one of the forest fire observation towers of the Department of Forests and Waters, from which may be had a magnificent view of the surrounding forest. The monument may be reached from Bedford by way of Rainsburg, thence over six miles of forest road in the Buchanan State Forest.

Waterfalls Add Beauty Colonel R. B. Ricketts Estate—Located in the gorge of Kitchen Creek below Ganoga Lake, Sullivan county. This gorge for a distance of five miles is lined with grand original hemlocks and hardwoods, stretching one-half mile on either bank of the stream, in which is a series of thirteen beautiful waterfalls.

STUDEBAKER holds 114 official records for speed and stamina more than all other makes of cars combined!

BENEATH the smart lines and colors of the new Studebakers is endurance, speed, brilliant performance—merely claimed, but proved.

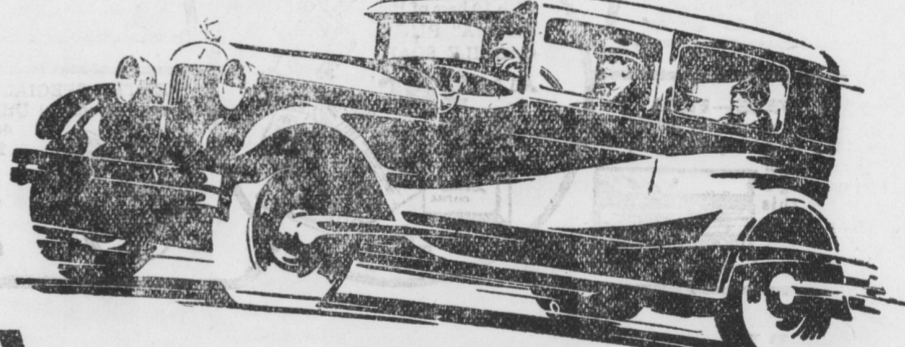
Proved by The President's great record of 30,000 miles in 26,326 minutes—The Commander's 25,000 miles in 22,968 minutes—The Dictator's 5,000 miles in 4,751 minutes—The Erskine's 1000 miles in 984 minutes. Every Studebaker-built car has proved beyond question performance leadership in its class.



Car illustrated is The Erskine Six Royal Sedan, \$1045. Club Sedan with artillery wheels, \$866. Prices f. o. b. factory

ED. REAM, Mount Joy

Ride this HUDSON



A personal experience will prove to you its performing leadership

We invite you as our guest to a personal demonstration of the Hudson Super-Six. We want you to learn how Hudson can do easily many things which you would not expect any other car to do at all. Scores of motorists, fresh from examining and riding in the latest cars offered by the industry, declare this Hudson the supreme performer of their experience.

In Buying a Hudson You Save up to Several Hundred Dollars a Car! \$1250 All prices f. o. b. Detroit

E. B. ROHRER, Mt. Joy, Pa.

Advertise in the Mount Joy "Bulletin"