

# BANG! Prices Cut to Cost and in Most Cases Below Cost for Our Final Clean-Up BANG!

Our Entire Stock Must be Sold During the Next Seven Weeks, after which we will be associated with the Boggs Quality Hardware Store, to which we will add a complete line of Radio Sets and Accessories

At these Closing-Out Prices it will pay you to buy a year's supply of Stationery

**SALE NOW GOING ON**  
AND WILL CONTINUE UNTIL THE ENTIRE STOCK IS SOLD

Post Cards, 5 Cts. Dozen  
Including Local Views & Greeting Cards

## RAINBOW RECORDS 50c

Regular 75c Values

Everybody knows this famous record. Most of the selections are those used at the Billy Sunday Evangelistic Services, sung by Mrs. Asher and Homer Rodeheaver. Records will not be demonstrated at this price.

## COLUMBIA RECORDS

10-inch Records, 35c—3 for \$1.00—Regular 75c  
12-inch Records, 50c—4 for \$1.75—Regular \$1.25

- 10c Shelf Paper ..... 5c
- Reed's Crepe Paper ..... 10c
- 10c Sanford Ink ..... 5c
- 15c Cross-Cut Toilet Paper ..... 10c
- 25c Fish Bowls ..... 10c
- 10c Pkg. Carbon Paper ..... 5c
- Sewing Room Baskets ..... 10c
- Stafford's Commercial Writing Fluid, quart ..... 75c
- Stafford's Commercial Writing Fluid, pint ..... 40c
- Crown Furniture Polish, \$1.00 bottle ..... 50c

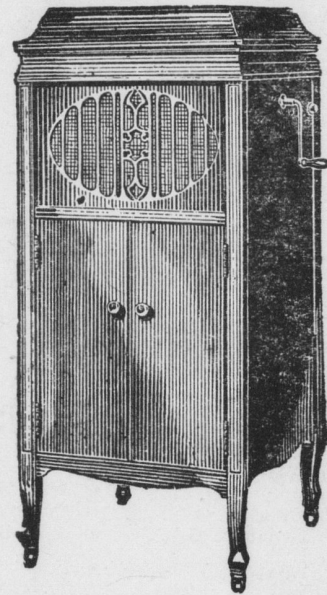
## SHEET MUSIC, 3 for 10c

We have taken a lot of our sheet music and put it up in packages of three sheets, to close out at 10c per package. Regular price: 25c, 35c and 40c per sheet.

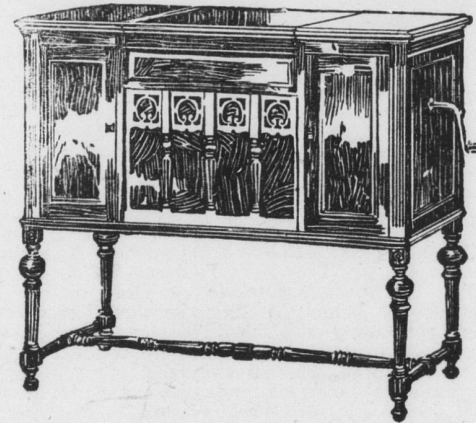
## NOTICE

Space does not permit us to itemize our entire line; but everything is reduced, except Radio Sets and Supplies, Brunswick Records and Sheaffer Fountain Pens.

## We Still Have a Number of Brunswick Phonographs



That must be sold, and we have decided to accept any reasonable offer to close out our present stock. You make a small down payment and we will allow you one year to pay the balance on weekly payments.



IF YOU WANT A PHONOGRAPH AT A REAL PRICE COME AND MAKE YOUR SELECTION AT ONCE

## I. A. SHIFFER

39 South Market Street

ELIZABETHTOWN, PA.

## BIBLES and TESTAMENTS

The popular International and Holman line will be closed out at 30% discount. Our stock consists of all sizes in Bibles and Testaments.

## ENVELOPES, 25 for . . . 5c

Regular Price, 10c and 12c  
20c Pkg. Envelopes, reduced to ..... 15c

## BOXED STATIONERY

- 15c Value, Closing Out Price ..... 5c
- 20c Value, Closing Out Price ..... 10c
- 35c Value, Closing Out Price ..... 25c
- 40c Value, Closing Out Price ..... 25c
- 60c Value, Closing Out Price ..... 35c
- 65c Value, Closing Out Price ..... 40c
- 75c Value, Closing Out Price ..... 50c
- \$1 Value, Closing Out Price ..... 65c

Correspondence Cards In All Colors . . . 25c to 50c  
Regular 35c to \$1.00 Values

This is all the popular Eaton, Crane and Pike brand, in all the popular shades, Gray, Buff, Pink, Blue, Lavender, with Silver, Gold and Colored Edge.

## KARA LINEN IN POUND PACKAGES

50c Value, Closing Out Price ..... 25c  
76 Sheets to Package

## 5 and 10c COUNTERS

Don't forget to look over our 5c and 10c counters. You will be surprised what you can buy for a nickel or a dime.

## Happenings at E'town College

The Colleges represented in the triangular debate were Elizabethtown, Albright and Muhlenberg. These forensic arguments were started on Thursday evening, January 14, when the Muhlenberg affirmative met the Albright negative on the Muhlenberg floor. The arguments of both teams proved to be very convincing to the audience, and the judges voted that Muhlenberg offered the strongest arguments by a vote of two to one.

On Friday evening the Elizabethtown affirmative debated the Muhlenberg negative at Elizabethtown. The Elizabethtown affirmative arguments were upheld by Desmond Bittinger '27, Eli Engle '27, John D. Trimmer '26; Menno Brunk '26, was alternate. The Muhlenberg arguments were upheld by John Rhoda

'28, Henry Schreiner '29, William Hudders '26, Howard Ross '26, alternate. The chairman for this debate was Professor Hinkel, Supervising Principal of the Hershey Schools. The judges were: Dr. F. M. Harbold, of Franklin & Marshall College; Professor C. H. Heintz, Principal of York High School, and Dr. A. P. Mylin, Superintendent of the Public Schools of Lancaster County.

Both teams offered good arguments but the Elizabethtown team was more logical in presenting their arguments, in explaining the actual functioning of the League and backed their statements by good authorities. The opposition very largely expressed their own opinions and used hypothetical cases to show the functioning of the League. The decision given by the judges was two to one in favor of Elizabethtown.

Also on Friday evening the Elizabethtown negative team motored to Myerstown where they met the Albright affirmative team. The

Elizabethtown negative team consists of Guy Saylor '26, Paul Overdorf '28, John Byer '26, Clarence Fry '29. The Albright negative arguments were upheld by Clyde Huett '26, and by the Gremby Brothers '26.

The Elizabethtown Team had the combined elements that are essential in debating. The Albright team also showed fine oratory and had good style in debating. The outstanding speaker on the Albright team was Mr. Huett, who presented his arguments from beginning to end without the use of notes. The Albright team probably lost the decision by not showing how the League has already justified itself in its existence. The judges consisted of one minister and two attorneys at law from Lebanon. The decision was two to one in favor of Elizabethtown.

Stationery office of the British Government corresponds to our Government Printing Office.

The famous Yonge Street, Toronto, originated in 1793 as a road from Lake Simcoe that fur-traders from the North need, not pass through Detroit when the latter place was taken over by the United States.

"Broncho" is a word originating in Mexico and signifies "mean" and "bad" tempered as applied to a vicious and unbroken horse. A "broncho buster" is merely a horse breaker.

The Emperor Vespasian, being sick with the disease wherof he died, when reproached by his physician for continuing to carry on matters of state, said: "An emperor should die standing."

Cattle introduced by early settlers of the Falkland Islands ran wild, but their progeny were gradually exterminated as sheep became the chief interest of the settlers.

**Who Wants a Cheap Home?**  
I have a dandy little home of 6 rooms and an outkitchen, frame house, slate roof, electric lights. The lot fronts 55 feet on Fairview street, Mount Joy. For a quick sale I will take \$2,000. Jno. E. Schroll Mt. Joy. Phone 41R2.

You may as well try to conduct your business without capital as to try and get along without advertising. There's no use, it won't go. All the leading and most successful merchants use the columns of the Mount Joy Bulletin.

The ancient Egyptians found the area of a circle by squaring eight-ninths of its diameter, instead of multiplying the square of the radius by 3.1416.

During the last three years there has been sixty-three electric railway abandonments in the United States.

**OUR SALE REGISTER**  
Following is a list of public sales for which posters were printed at this office or said sale is advertised in the Bulletin.

Saturday, Jan. 16—On the premises No. 333 Marietta street, Mt. Joy, large lot of household goods by Mr. Henry Evans, Gibble, auct.

Saturday, Jan. 23—At the Florin Hall, Florin, Pa., large lot of anything and everything by the Community Sales Company. Sale starts promptly at 12:30. Vogle, auct.

Wednesday, Jan. 27—At 130 E. Main street, at the residence of Mrs. Mary Shaffner, Dec'd., lot of household goods, cigars, cigarettes candies, and tobacco, store fixtures show cases, antique furniture and dishes. Frank S. Groff, executor. Frank, auct.

Saturday, Jan. 30—At the former market house, Mt. Joy, next big community sale for everybody by C. S. Frank & Bro.

Saturday, Feb. 6—At the Bulletin office, Mt. Joy, 7:30 p. m., real

estate by Bess F. Bowman and John M. Bowman, executors of the Martin S. Bowman estate. Frank, auct.

Saturday, Feb. 13—On the premises half a mile north of Mt. Joy Boro, farm implements, poultry supplies and household goods by Samuel Hoffman, Gibble, auct.

Wednesday, Feb. 24—On the premises near Green Tree church, along the Colebrook road, two miles north of Rheems, implements and household goods. Jacob Kreider, Gibble, auct.

Saturday, March 13—On the premises two miles south of Mt. Joy, near Newtown, horses, mules, entire lot of farm implements and some household goods by the Chas. A. Greider Estate. Frank, auct.

Thursday, March 18—On the premises in East Donegal twp., along the road leading from Florin in the Union school house, near the latter, live stock, implements, and household goods by Michael Wagenbach. Frank, auct.

We're at your service when you need job printing.

# Don't Buy Lancaster County Chicks

UNTIL YOU VISIT

# The Musser White Leghorn Farm

TRAP NESTED STRAIN

MOUNT JOY, PA.

TRAP NESTED STRAIN

Capacity: Incubator, 40,000 Hens, 4,500 Brooder, 25,000