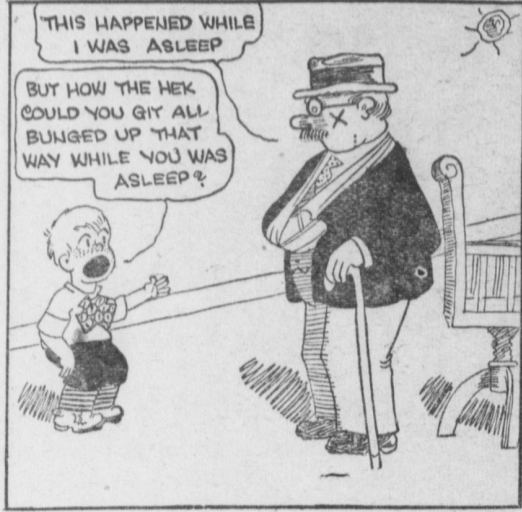


The Comic

MICKIE, THE PRINTER'S DEVIL



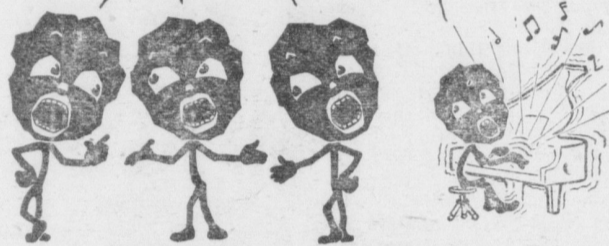
By Charles Sughrue

Not S

JNO. A. 144 N. Qu

THE FLORIN HEAT FOLKS

FOR IT'S ALWAYS FAIR WEATHER WHEN THE HEAT FOLKS GET TOGETHER WITH A FIRE IN THE FURNACE AND A WARM CHEER IN THE AIR



HAPPY NEW YEAR!

Have you made any good resolutions? The best one you can make is to resolve to turn over your fuel worries to the Heat Folks. Our resolution is to give you another year of good service and good coal, strike or no strike. We can furnish you with the best grades of (bituminous, semi-anthracite) coal and of coke for your immediate needs. And we will have your favorite grades of anthracite as soon as we can get them.

Call the

HEAT FOLKS

For Good, Clean Coal

Daniel M. Wolgemuth FLORIN, PENNA.

Phone 151R4 Mt. Joy Exchange

Founds Institute of Animal Economics



James E. Larrowe

FINDS NEW INSTITUTE TO HELP THE EASTERN FARMER

What the Rockefeller Foundation stands for in the welfare and progress of the world at large, the Larrowe Institute of Animal Economics is undertaking in behalf of Eastern dairy and poultry farmers according to a news story received here today. Funds to carry on the work have been provided for building a greater dairy industry in the East. Emphasizing diversification on the average farm and more efficient methods with cows, hens and crops to feed them, covers the scope of the newly established Institute. The actual work is now in the hands of a staff of agricultural experts who are intimately familiar with farming conditions in the East and who have themselves been practical farmers. No phase of dairying and poultry raising will be overlooked which bears upon putting more dollars in the farmer's pockets. Since the individual farmer cannot determine the market price himself, it is up to him to increase his profit and to lower his costs, and this is what the Institute of Animal Economics will work hand-in-glove with him to accomplish. "Dairying is the logical industry of the Eastern farmer," says James E. Larrowe, widely known engineer and president of the large manufacturing concern whose donations made the Institute possible, in explaining why the Institute has chosen this field for its activity. "Not only are physical conditions suited to it, but an ever-increasing market is furnished by the rapidly growing population centers nearby. No other farm effort will pay him so well as efficient dairying with poultry raising as a companion enterprise. The Institute will keep the farmer informed on ways to increase his cow and hen efficiency through research and interpretation of the great work of the various agricultural colleges. It will do this in several ways. For one thing, a careful survey will be made of representative localities throughout the East to give the Institute a working knowledge of farm conditions today and what problems most relentlessly confront the farmer. An experimental farm will be operated under average farm conditions and the results of this will be made known. New methods of feeding and caring for cows and chickens, for increasing milk and egg production will be closely watched and tried out before recommendation. A bureau of inquiry will be established, giving personal service on any questions sent in. In creating the institute and providing largely for its maintenance, Mr. Larrowe is giving substance to what has long been a dream of his. Mr. Larrowe has a wide knowledge of both engineering and nutrition to both of which he has given a life-time study.

Brighten Rooms With Flowers Cut the branches of any of the early flowering shrubs, such as pussy willow, Jap Quince, golden bell, witch hazel, and early honeysuckle will flower in January if placed in jars of water in a warm room. A little later cherry and apple can be forced.

Get Cockerels Now Now is the time to buy breeding cockerels for the farm flock. If you wait until the last minute you will pay twice as much as at present. The breeder must be paid for keeping the cockerels for you until you order them.

Make Stable Changes The winter season provides time for making repairs and improvements in the dairy stable. Often labor can be saved and cows made more comfortable by a few inexpensive changes in arrangement.

Remember State Products Show, 1926, well in letter days

WILL HELP CELEBRATE PHILAS SESQUI CENTENNIAL

The Lancaster County Historical Society have set in motion the steps considered to be necessary to celebrate properly next July the 150th anniversary of the signing of the Declaration of Independence. The celebration is intended to emphasize and make plain to the generation the true and actual part which Lancaster County took in American Independence. To do this, it will be necessary to go into faithful and thorough research upon all the lines of our county's activity and help in the Revolutionary War, and in the steps leading up to it. It is intended to begin at once to prepare our people for the event by inserting in the local papers the steps day by day or week by week (which ever is feasible), the acts which our County of Lancaster did 150 years ago, so that by the time July 4th, 1926 arrives, the stages leading up to the Declaration will have been reviewed weekly as they occurred 150 years ago. By this means, when July 1926 arrives our interest, our information, and our united efforts in the event will be awakened and active. Some of the lines of the preparation necessary to the success of the event will be, a thorough canvass of the graves of Revolutionary heroes in this county and the interest of the families of today descended from them. Newspapers are desired to insert an inquiry in their papers for their location of such graves, and to request all those who have knowledge of the same to report all that they know and can gather from the tombs about the soldiers to the Committee. It is intended to place a flag on each one of these graves; and to collect all the information and even traditions that we can of the soldier's activity etc., and all about him that can be secured. Send information to the chairman of the committee.

ONIONS AND GOATS FAVORED BY ZUNI BOYS AND GIRLS

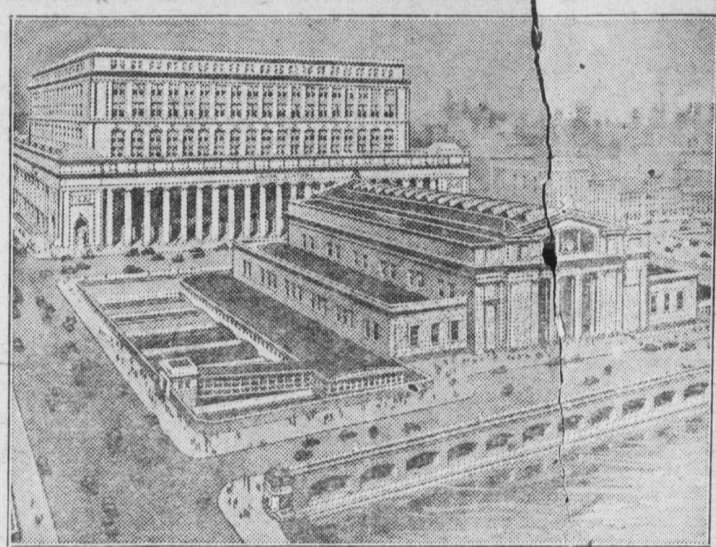
Inspired by the success of boys' and girls' club work, carried on by the extension service of the United States Department of Agriculture and the various agricultural colleges, the Indian Service of the Department of the Interior invited cooperation of the Department of Agriculture in instituting similar work among the Indian boys and girls at the Government schools. Four clubs were formed about two years ago, with about 60 members. This year, 1925, organized work was conducted on 53 reservations, with an enrollment of more than 1,800 boys and girls, chiefly Indian, and not including the Five Civilized Tribes of Oklahoma which have 2,500 members.

The lines of work that interest these boys and girls include sheep, pig, poultry, calf, corn, potato, garden, bread, canning and sewing clubs. Very recent are rope, chili, onion and goat clubs. The two latter are especially popular among the Zunis of New Mexico. A member of the onion club has planted 1,000 onions. The success of the goat clubs will mean much to the Indians as it will help them to start the raising of milk goats and provide milk for use in the home. Among the Navajos a girls' sheep club has been formed. More than 100 Indian boys and girls are enrolled in clubs in Arizona. On one reservation in that State the garden clubs have furnished 350 lbs. of lettuce, 100 pounds of spinach, and 50 pounds of turnips to the day school for use at the noon-day meals. The sewing club on the same reservation won the first prize for the best club exhibit in the State, and the sweepstakes at the State fair. Poultry, pig, and calf clubs have large enrollment. The club leaders, under whose supervision the clubs are carried on, include superintendents of the Government schools, Indian Service farmers, public school teachers, field matrons, neighboring white farmers, and Indian men and women who have met with success in their work. County and State fairs have proved especially successful in stimulating interest in the club work.

Tell About Insect The red-banded leaf roller has caused serious losses to the fruit growers. Keep the poultry houses well ventilated to prevent colds. Ventilation means dry houses. Do not entirely close the ventilators on cold nights as this permits moisture to gather in the houses, with resulting colds. An ounce of prevention is worth a pound of cure.

Remember State Products Show, 1926, well in letter days

Latest Triumph in Railroading



THE completion of the new Chicago Union Station marks a noteworthy accomplishment in the history of important engineering undertakings. From which travelers from all parts of the United States will derive pleasure and benefit.

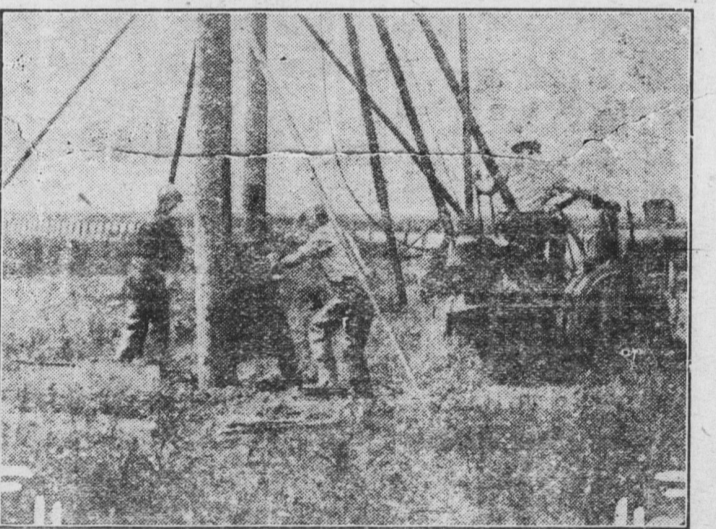
The station is without doubt one of the finest and most efficiently designed railroad terminals in the world. It forms a vital link in the realization of the "Chicago City Beautiful Plan." Simplicity, accessibility and convenience for the traveling public are the essential virtues of the new terminal. Rest and recreation rooms, ticket offices, barber shop, dining rooms, stores of various kinds, and almost every convenience known to travelers, are to be found on the one level, no steps to climb.

The main station is a low monumental type of building with a row of massive columns of classic design along the entire east front. Once inside, the traveler finds himself in a gigantic waiting room more than 100 feet high and brilliantly lighted through skylights in the great arched ceiling. Colonnades inclose the room, the walls of which are patterned after the architecture of ancient Rome. Bordering this room are the ultra-complete passenger terminal facilities. An innovation in railway terminal design is a conference room accommodating 125 people, which is available, without charge, to patrons of the Union Station lines for conferences and other meetings.

To give some idea of the immensity of the new station, it may be stated that the main building covers an area of about three acres with a concourse covering 60,000 square feet. The entire terminal facilities cover more than 35 acres and will expedite the prompt and satisfactory handling of 50,000 passengers, 400 tons of baggage and 300 trains daily with room for future expansion. Fifteen acres of glass were used in the various coverings over the train sheds, which extend more than 1,200 feet beyond the main structure. A total of 17,000 tons of structural steel, 175,000 cubic feet of Indiana limestone and 10,000 cubic feet of granite were used in the station building and concourse. The foundation consists of 449 cylindrical concrete piers from four to ten feet in diameter, reaching to a depth of more than 60 feet below the level of the Chicago river.

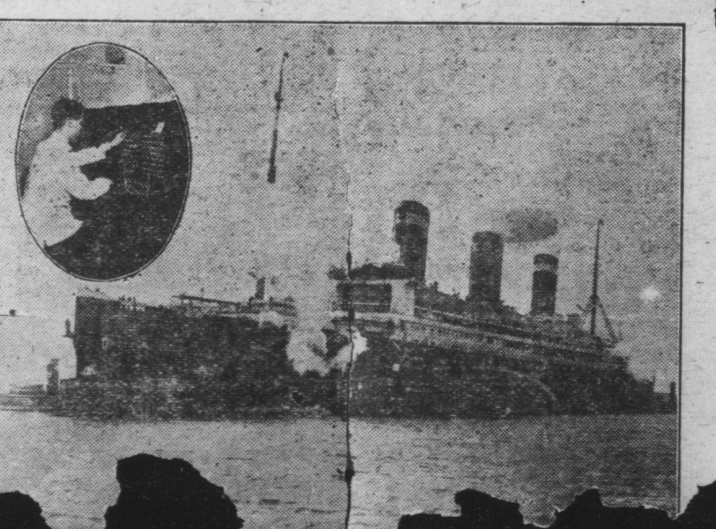
Those who have had the privilege of inspecting the new station pronounce it a marvel in terminal construction and are urging their friends to see it on their next visit to Chicago. The station is used jointly by the Pennsylvania Railroad; Chicago, Milwaukee & St. Paul Ry.; Chicago, Burlington & Quincy R. R., and the Chicago & Alton R. R.

CONSTRUCTION MEN ENCOUNTER DIFFICULTIES IN SETTING POLES



Telephone construction men of the Delaware and Atlantic Telegraph and Telephone Company resorted to the ingenious device above when setting poles in sandy soil along the New Jersey coast. A caisson shaped like a barrel is sunk in the shifting sand. This prevents the hole from filling up before the pole is in place. After the pole is "planted," the caisson is removed in two sections.

LEVIATHAN HAS TELEPHONE CONTACT WITH MAINLAND BEFORE ANCHORING



Advertisement for THE MARTIN'S PASTEURIZED MILK, featuring a bottle illustration and text about quality and availability.

Advertisement for Candies, listing various flavors like Walnut Hash Peanut Brittle and Assorted Flavors.

Advertisement for Chandler's Drug Store, located at West Main Street, Mount Joy, Penna.

Advertisement for Paul A. Martin, located at 140 College Ave., Elizabethtown, Pa.

Advertisement for Building Contractor and Jobbing, offering estimates and satisfactory guarantees.

Advertisement for Used Cars, partially visible.

Trappers--ATTENTION--Trappers

Table listing fur prices for Muskrats, Opossum, Skunk, Black, Short, Long, and Broad. Prices range from \$1.15 to \$2.70.

H. E. GARBER AT THE TIRE STORE 208 East Main Mount Joy, Pa.

Advertisement for The Best Heating Coal, emphasizing quality and value.

F. H. BAKER, Mount Joy, Pa.

Advertisement for Hershey's Barber Shop, offering haircuts every 10 days and hair bobbing.