

MICKIE, THE PRINTER'S DEVIL

By Charles Sughrue

Ask Any Automobilist

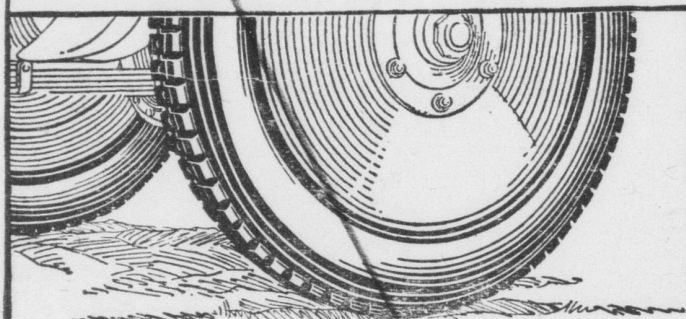


A New Way to Balloon Comfort

It will interest you to know that all AJAX Cord Tires are now built on the balloon principle.

That is, they are ultra-flexible and deliver maximum mileage at greatly reduced air pressure.

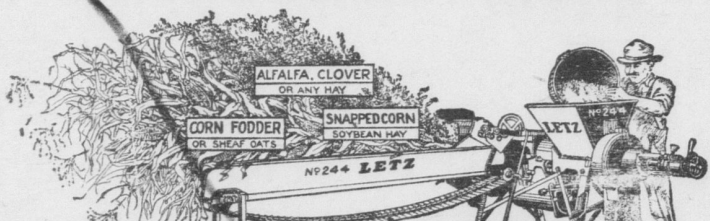
In addition, of course, we carry a full line of AJAX Balloons for standard and special-size rims.



AJAX TIRES

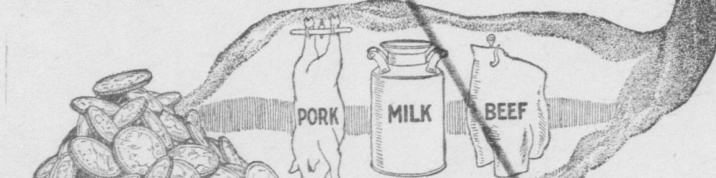
MOUNT JOY AUTO SUPPLY H. E. GARBER, Proprietor 208 East Main Street MOUNT JOY, PA. LOCAL DISTRIBUTOR

LETZ-DIXIE MIXED MEAL MAKER



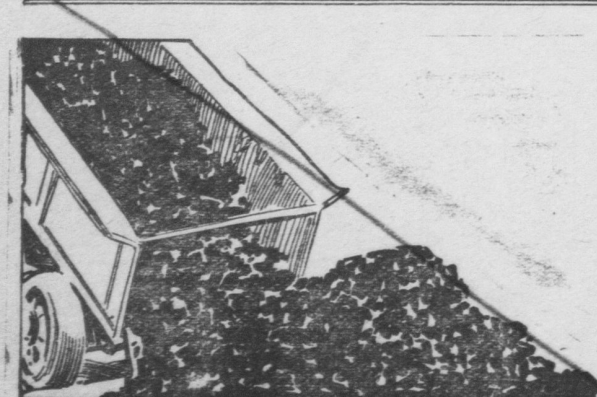
Reduces the cost of feed 25 to 50% Increases production 15 to 30% Stop that monthly feed bill. The Letz-Dixie will cut, grind and mix anything grown—makes a perfectly balanced ration from home-grown crops.

Capacity No. 244 Dixie with FORDSON TRACTOR	
Corn fodder with corn	2500 to 5000 lbs. PER HOUR
Ear corn with shuck	3000 to 5000 "
Alfalfa or clover hay	2000 to 3000 "
Soy bean with vines	2500 to 5000 "



Green, wet, or oily material will not clog the LETZ-DIXIE. Built in three sizes for 4 to 25 h. p. engines. Has two to three times the capacity per h. p. of any roughage mill made. Write or call immediately for further particulars, prices and samples.

H. S. NEWCOMER & SON MOUNT JOY, PENNA.



The Best Heating COAL

Pound for pound, Baker's Coal will give you more heat, whether burned in furnace, stove or grate, than any other coal you can buy. A trial will prove the truth of our statement.

F. H. BAKER, Mount Joy, Pa

SALUNGA

Mrs. Hardy entertained two of her aunts from Lancaster on Tuesday. Mrs. Lizzie Stauffer and Fannie Baer spent two days visiting the Abram and Omer Landis families. The Maple Grove school closed on Friday. Mrs. Espenshade the teacher, is suffering with a severe cold. The Women's Foreign Missionary meeting will follow Sunday school his Sunday morning in the M. E. church. Mr. and Mrs. Fred Ibach and three children, Mr. and Mrs. Ephaim Herr and son, of Lititz, spent day at Philadelphia. Dr. Brisbin, of McVeytown, and Dr. Johnson, of Lewistown, chums of Dr. J. S. Kendig at Jefferson Medical College, spent several days with him. The Landisville and Salunga Auxiliary met at the home of Mrs. Samuel Eby this week. The next meeting will be November 4, at the home of Mrs. Harry Greiner. The immediate family consisting of Mr. and Mrs. Clayton Spahr, Sr., Mr. and Mrs. John Kinter and son, Clayton Spahr, Jr., and Russell Spahr, celebrated their mother's birthday anniversary recently at the home of another son and wife, Mr. and Mrs. Roy Spahr. The Epworth League of the M. E. church held their monthly business meeting on Tuesday evening at the home of Mr. and Mrs. William Fackler. Those present were: Mrs. J. Minnich, Misses Mary and Edna Wertz, Dorothy Minnich, Esther Kendig, Mary Fackler, Elizabeth Fackler, Mary E. Peifer, Mrs. Q. O. Reitzel, Sue and Anna Fackler, Betty Reitzel, Mr. and Mrs. Roy Spahr, William Reitzel and William Fackler.

FRUIT GROWERS SAVE MONEY THROUGH FROST FORECASTS The accuracy of frost forecasts made by the Weather Bureau of the United States Department of Agriculture is illustrated by results in a typical district, where 95 forecasts of temperature near or below the danger point were made and distributed. In 91 per cent of the cases the forecast was correct within 2 degrees F. or less, and in the other cases the variations were only slightly greater. Fruit growers appreciate this special frost warning service by paying about half the expense of it in order to extend the operations permitted by the funds of the Weather Bureau. Information furnished not only saves fruit but prevents the unnecessary burning of many gallons of oil. The practice of orchard heating is growing rapidly. There are three general methods of frost protection: Conserving heat, stirring the air, and adding heat by means of fires. The last has proven thus far the most practical and economical method. Several trained meteorologists are assigned to frost work during the danger period each year in important fruit districts. This work consists of temperature surveys, the issuing of forecasts and warnings of frost, experimental work as to the most effective methods of protection, and giving advice to growers. Temperature surveys are useful not only in regard to showing the susceptibility of a locality to frost owing to its topography, but also as an aid in selecting orchard sites. In issuing warnings there is a specially arranged system of distribution. One grower may be told to prepare for firing the latter part of the following night, and another near by that his orchard will be in no danger. Experimental and advisory work comprises the testing, under actual orchard conditions, of various devices for frost protection; determining the relative effectiveness of different kinds of heaters, testing personally owned thermometers for use of the growers; and giving advice as to the proper exposure of instruments in an orchard.

TELEPHONE UNIFICATION WILL BE BIG ADVANTAGE The unification of the telephone systems of the Bell Telephone Co. and the Columbia Telephone Co. operating in the western section of Lancaster County comprising the exchanges in Columbia, Elizabethtown, Marietta and Mount Joy will become effective about November 1st. After the two systems are unified a telephone subscriber will be able to talk to about twice as many telephones on the system than to be operated by the Columbia Telephone Co. as he can at present. The subscribers will have access to both Bell and Independent lines, in other words, a telephone subscriber will be able to get toll or long distance service over both Bell and Independent lines. To have this service in the past required the maintenance of two separate telephones, one Bell and one Independent. This will be a big saving as well as a great convenience to the telephone using public. The unification of the telephone service in the territory served by the Columbia Telephone Co. is one of the first to be accomplished in the state. H. A. Oberdorf, General Manager of the Columbia Telephone Co., stated recently that his company will do considerable work during the next few months in connection with the unification of the two systems. The company contemplates making a number of improvements in the different exchange towns. The exchange service in Mount Joy and Elizabethtown will be given from the present Bell exchange and the present force of operators and employes will be maintained.

PILGRIM SPECIAL Bicycles

Recent tests of farm seed samples sent to the Department of Agriculture for analysis indicate that Canada thistle is being found quite common in Canada blue-grass purchased from outside the State. Dr. E. M. Gress, who is in charge of the seed analysis work, states that more Canada thistle seed has been found in Canada blue-grass than in any other seed during the past few months. Ordinarily Canada thistle seeds are found more prevalent in alfalfa clover than in any other farm seed. Warning is issued to farmers not to buy farm grass seed of any kind where a record of analysis is not displayed on the package. When a certificate showing the analysis is displayed, it should be studied to see if noxious weeds or other undesirable factors are present. It is important that farmers be extremely careful about buying farm seed through mail order houses and other retail merchants outside the State for under such circumstances, it is impossible to gain any protection from the Pennsylvania Seed Law. Seed retailers in Pennsylvania should insist that wholesalers from whom seed is purchased furnish a statement of the analysis of the seed and then display the analysis on the package in order to avoid prosecution. \$4,670 IN FOOD FINES COLLECTED DURING MONTH A total of \$4,670 was collected by the State Bureau of Foods and Chemistry during the month of September as fines resulting from the violation of food laws. One odd dealer in Allegheny county was fined for selling milk containing added water and two men in Dauphin county for selling cakes colored with coal tar dye. A Lehigh county merchant paid a fine for selling cherries containing sulphur dioxide. A Philadelphia confectionery owner misbranded cream malt chocolate and was prosecuted for his act. Several dealers were fined for selling ground cloves containing an excess of ash and sand. A total of 71 prosecutions were ordered involving merchants who were selling stale eggs for fresh ones. Three cases sausage containing added water was being sold. The total number of prosecutions during the month was 97. Oldham County, Ky., owes an estimated increase of \$128,968 in annual returns from its livestock and poultry to the growing use of purebred sires. This figure is the result of calculations made by G. B. Nance, County Agent for Oldham County, and reported to the United States Department of Agriculture. Mr. Nance based his reckonings on the difference between the percentage of purebred sires used in his county and an average computed from the percentages of purebred sires used in two adjoining counties. He then combined with this figure data on the superior utility value of purebred sires from such sources as the United States Department of Agriculture and State experiment stations.

NEW YORK

\$3.75 SUNDAY EXCURSION Round Trip New York SUNDAY, OCTOBER 26 Special Through Train Direct to Penna. Station, 7th Ave. and 32nd St. leaves MOUNT JOY 6:42 A. M. Stopping at principal stations between Harrisburg and Lancaster. Returning leaves New York, Penna. Sta. 8:20 P. M.; Hudson Terminal 10 P. M. See Broadway Central Park, Grant's Tomb, Fifth Avenue, Brooklyn Bridge, and get a glimpse of the greatest city on the American Continent. PENNSYLVANIA R. R. The Standard Railroad of the World

Run-down Weak, Nervous

Lancaster, Pa.—"After I was married I became terribly run-down and was weak and nervous. My sister-in-law told me to try Lydia E. Pinkham's Vegetable Compound. My husband got me a bottle at once, and it did me so much good that I kept on taking it. I began to feel well and strong again and was able to do my housework up to the time my baby was born—nice fat little girl in the best of health. I surely am recommending the Vegetable Compound to my friends when they have troubles like mine, and I am perfectly willing for you to use these facts as a testimonial." —Mrs. FRANK H. GRIMM, 533 Locust Street, Lancaster, Pa. Women should heed such symptoms as pains, backache, nervousness, a run-down condition and irregularity, as they indicate some form of female trouble. Lydia E. Pinkham's Vegetable Compound is a dependable medicine for all these troubles. For sale by druggists everywhere.

Costly Weed Pest Found in Grass Seed

Warning is issued to farmers not to buy farm grass seed of any kind where a record of analysis is not displayed on the package. When a certificate showing the analysis is displayed, it should be studied to see if noxious weeds or other undesirable factors are present. It is important that farmers be extremely careful about buying farm seed through mail order houses and other retail merchants outside the State for under such circumstances, it is impossible to gain any protection from the Pennsylvania Seed Law. Seed retailers in Pennsylvania should insist that wholesalers from whom seed is purchased furnish a statement of the analysis of the seed and then display the analysis on the package in order to avoid prosecution.

How About Electric Lights for Your Home

Think of the enjoyment that may be yours through the use of electric lights in your home. Then there would be no more lighting, no smoky lamps and no dangerous lanterns. Delco-Light transforms darkness into the brightness of day. Low prices and easy terms make it possible for you to have Delco-Light, and you can have it NOW. DELCO-LIGHT PRODUCTS C. E. Hollenbaugh MAYTOWN, PA.

PAPER HANGING

Also Dealer in WALL PAPER Work Done at Reasonable Prices on Short Notice D. F. WAUGHTEL MANHEIM, PA. Ind. Phone 702L sept. 17-18

DR. J. M. FERRELL (PHYSICIAN)

Practice limited to diseases of the Stomach, Liver, Bowels, Nerves, Blood, Rheumatism and all forms of Skin Diseases. Modern methods of treatment. Office Hours: 9 A. M. to 8:30 P. M. OFFICE: 118 N. PRINCE ST., LANCASTER, PA. sept. 17-18

City Shoe Repairing Company

50-52 S. Queen St. Lancaster, Pa. AUCTIONEER Gideon K. Wagner Elizabethtown, Route No. 2, Lancaster County, Pa. Residence, Beverly Station Call on Bell Phone, Elizabethtown SR-13. Prompt attention and satisfaction guaranteed. Have had years of experience in the business. Reasonable charges. Give Me A Trial It is remarkable how little interest the average congressman takes in agricultural matters except just prior to election days. Read the Bulletin.

Used Cars

Special Dodge Touring 1922 Ford Touring. 1922 Ford. Ford Coupe. Essex Coupe. Oakland Touring \$100. P. Franck Schock MOUNT JOY, PA.

Mt. Joy Theatre

Thursday, 23—The Social Code VIOLA DANA From the Story, "Whom It May Concern" Comic: Clyde Cook in The Cyclist Friday, 24 — Spanish Dancer POLA NEGRI Antonio Moreno Wallace Beery Kathryn Williams Gareth Hughes Adolph Menjou Robert Agnes Saturday, 25 — Under the Red Robe Robert B. Mantell Alma Rubens John Charles Thomas Pathe Comic: The Champion Tuesday, 28—Grail BY DUSTIN FARNUM A Western Story Comic: Children Wanted

Wingert & Haas Hat Store

Largest Line of Fall and Winter HATS Caps and Gloves In the City Plain Hats A Specialty JOHN A. HAAS, Propr. 144 N. Queen Lancaster, Pa.

APPLES FOR SALE

GRIMES GOLDEN, SMOKE HOUSE and STAYMAN WINESAP Grown by the Paragon Nut and Fruit Company. F. S. KRAYBILL 101 Poplar St., MOUNT JOY oct. 15-16

FEEL your hair

How long is it? How many days since it was cut? 10 is Right. Haircut every 10 days. Go now, to Hershey's Barber Shop

For Falling Hair

Try Our Special SHAMPOO Weaver's Barber Shop Cor. W. Main & Manheim Sts.

STITCHERS WANTED

IDEAL WORKING CONDITIONS STEADY WORK, GOOD PAY THE LeBLANC COMPANY Formerly The Herrmann Aulum & Company Factory sept. 26-27