

ST. LUKE'S MUSICAL AND DRAMATIC CLUB

(by special arrangement with Samuel French of New York) PRESENTS THE ORIGINAL COMEDY

THE WRONG MR. WRIGHT

by George H. Broadhurst

IN THE MOUNT JOY HALL

MONDAY, FEB. 25th and WEDNESDAY, FEBRUARY 27th AT EIGHT O'CLOCK

Tickets at Brown Bros. Hardware Store, Bernhart's Grocery Store or from any member of the congregation.

Chart for Reserved Seats Will Open Friday, February 22

EVERYTHING FOR POULTRYMEN

Write, Phone (3866 Bell), or Bring your order to 31 South Queen Street

SPRECHER & GANSS, Inc. THE BIG POULTRY SUPPLY HOUSE

- INCUBATORS Hot Water-Hot Air BROODERS Coal Stove or Oil OATS SPROUTERS Cabinet and Open Pan Galvanized Brood Coops SAN NON-FREEZE FOUNTS 1-2-3-5 Gallon Sizes MASH FEEDERS 1/2 and 1 Bushel Sizes Wall and Jar Fountains Grit and Shell Boxes Baby Chick Feeders Parcel Post Egg Boxes P. P. LIVE CHICK BOXES Wood Shipping Coops EGG CRATES Celluloid Leg Bands EGG TESTERS Thermometers Hygrometers Green Bone Cutters Root and Vegetable Cutters Lice Powder Liquid Disinfectant Feeds and Remedies for Birds and Chickens Ground Shell and Grit Poultry Netting

WRITE TO-DAY FOR COMPLETE LIST

WOULD YOU BUY AN Electric Washing Machine

If you could get a brand new machine at a substantial saving over the regular price...

ROTAREX ELECTRIC WASHERS

and will make a real proposition to move them quickly.

Cash or Time Payments

Call or phone NOW so you will be sure to take advantage of this saving.

DEITZ ELECTRIC SHOP, Mt. Joy, Pa.

We Pay Your Carfare on Purchases of \$15

DONOVANS

Store Open Saturday Evenings Until 9 O'Clock

DONOVAN DAY

WEDNESDAY, FEBRUARY 20th

A One Day Special Sale That Represents a Saving To You of 1-4, 1-2, and 1-3 on A Quarter Million Dollars Worth of Brand New Seasonable Merchandise.

Use Our Mail Order Service

E. E. WOLGEMUTH ELECTRICAL WORK

House Wiring Electrical Supplies

Material For Building Telephone and Electric Lines

Use That Stream of Water to Generate Electric Current.

Information Freely Given. Our Aim is "Satisfaction"

Bell Phone 128R2-R. D. No. 1 MOUNT JOY, PENNA. Feb. 20-3m

EAGLE MIKADO No. 174 THE YELLOW PENCIL with the RED BAND EAGLE PENCIL CO. NEW YORK, U.S.A.

THE PRODUCE AND LIVE STOCK MARKET

CORRECT INFORMATION FURNISHED WEEKLY BY THE PENNA. BUREAU OF MARKETS FOR THE BULLETIN

Market conditions continue very drabby during the past week. Beef steers compared with week ago strong to 25c higher, top 9.75 average weight 1170 lbs, bulk 8.25-9.00. Compared with same week last year, top 9.25, bulk 7.20-8.75. Bulls held steady. Fat cows showed a stronger tendency, best grades closing 25c higher. Cannons and cutters steady. Calves held firm, top vealers 14.50, few selects \$15.00. Hogs closed steady to strong, top 8.75, bulk to butchers 8.25-8.60.

Receipts for to-day's market: 11 cars cattle from the following points: 9 Penna., 1 Indiana, 1 Chicago containing 265 head. 137 head driven in. Total 402 cattle, 6 calves, 637 hogs.

Receipts for week ending Feb. 16, 1924: 45 cars cattle from the following points: 15 Penna., 11 Va., 5 Chicago, 4 Tenn., 3 Indiana, 2 Iowa, 1 Pittsburgh, 1 Canada, 1 St. Louis, 1 Maryland, 1 Kentucky containing 1635 head. 230 head driven in from nearby farms. Total 1265 cattle, 123 calves, 1627 hogs, 62 sheep. Compared with same week last year: 42 cars cattle containing 986 head, 200 head driven in from nearby farms. Total 1186 cattle, 45 calves, 1913 hogs, 5 sheep.

Range of Price:

Table with columns for STEERS, BULLS, HEIFERS, COWS, FEEDING STEERS, STOCK STEERS, STOCK BULLS, CALVES, HOGS. Lists prices for various grades of livestock.

Prices to Farmers: Wheat \$1.07, Corn per bu. .80, Hay (baled) Timothy \$25.00-\$26.00 ton, Straw \$12.00-\$13.00 ton

Selling Price of Feeds: Bran \$39.00-\$40.00 ton, Shorts \$38.00-\$39.00 ton, Hominy \$43.00-\$44.00 ton, Middlings \$40.00-\$41.00 ton, Linseed \$55.00-\$56.00 ton, Gluten \$51.50-\$52.50 ton, Ground Oats \$40.50-\$41.50 ton, Cotton Seed 43 pc. \$61.00-\$62.00 ton, Dairy Feed 16 pc. \$37.00-\$38.00 ton, Dairy Feed 18 pc. \$41.00-\$42.00 ton, Dairy Feed 20 pc. \$54.00-\$46.00 ton, Dairy Feed 24 pc. \$52.50-\$53.50 ton, Dairy Feed 25 pc. \$53.50-\$54.50 ton, Horse Feed 85 pc. \$43.50-\$44.50 ton

Beets: Homegrown, good supply, 5-10c bunch. Cabbage: Homegrown, good supply and condition, new stock 6-10-15 head. Carrots: Southern, good supply, 5c bunch, 10c qt. box. Celery: Homegrown and N. J., fair supply, 5-20c stalk. Cauliflower: Homegrown, 15-30c head. Lettuce: Nearby, 10-20c head. Calf, Iceberg, 20-25c head. Endive: 6-10c head. Onions: Homegrown and Ohio, fair supply, 10-15c qt. box. Parsley: Homegrown, good quality, 1-5c bunch. Peppers: Homegrown, fair supply and quality, 1-3-5c each. Potatoes: Nearby Irish Cobbler, new stock, 15-20c 1-4 peck, \$1.75-2.25 bushel. Small, \$1.00-1.50 on. Sweet Potatoes: Dela. and homegrown, fair supply, 15-20c 1-4 peck. Spinach: Homegrown, fair supply, 10-15c 1/2 peck. Turnips: N. J., fair supply, 20-25c 1/2 peck. Butter: 50-60c lb. Creamery 55-60 Eggs: 46-50c dozen, mostly 48c. Poultry: Dressed chickens, \$125-2.00 each. Springers, 60-61.00 each. Squabs, 25-40c each. Ducks \$1.50-2.00 each. Apples: Homegrown, supply good, Summer Rambos and other varieties, 15-40c peck. Crab apples, 25-30c 1/2 peck. Bananas: Jamaica, good supply, 25-35c dozen. Grape Fruit: Fla., fair quality, 10-20c each.

Read the Bulletin. If you want to succeed—Advertise

PENNSYLVANIA R. R. EXPLAINS TRUCK USE

"Pedler Freight Trains" Superseded

Explanation of the new policy of the Pennsylvania Railroad of using motor trucks instead of "pedler freight trains" where possible, is made by Robert C. Wright, general traffic manager of the Pennsylvania System. He says:

"It is evident that a freight train can not compare with a light vehicle able to move at high speed. Local freight service handling small packages has become an increasing burden. Just how big a territory this plan should include, economically speaking, I am unable to say off-hand, but probably it would extend twenty-five miles from any large city.

"The tonnage of this class handled by the trucks has been constantly growing and ours going down, but we have been compelled to operate the same number of trains and crews, to bear all the costs of operation, taxation, and a dozen other things. So we decided to select three busy sections of road and see what we could do with a combined service. Results have been even better than anticipated, but it is a little early to reach conclusions. If the plan proves practicable in every way, it may be the forerunner of a motorized service for all our small local shipments. The public is not affected in any way.

"There are many economies which do not appear at first sight. If a woman in Philadelphia wants to ship her piano down to a station on the Wilmington line, she must first buy a packing case worth \$12, and then the piano is handled eight times. But she can telephone a trucking company, throw an old quilt or two over the piano, and have it moved to its destination. She makes a considerable personal saving and a large economic loss is avoided.

"We have no intention of going into the trucking business. We wish the trucking companies would take all of this small business. There is no prospect of such an arrangement for a long time to come, however, because it is not probable that we could be relieved of our responsibility as carriers at this stage of development. Yet it is beyond question that a house-to-house delivery by truck of small parcels in congested territory is a better plan than shipment by railroad, or rail and truck, with additional truck deliveries made necessary at either end."

CONCRETE SATISFIES AS ROAD MATERIAL

Stone and Cement Makes Long Wearing Highway

Concrete roads, properly made with good portland cement, offer considerable choice of basic materials, according to the local market, and a satisfactory long wearing road when completed. For suburban and rural roads concrete is an ideal road material. Concrete consists of a mixture of water, cement, sand, and gravel or stone of many varieties. Engineers call the sand part the "fine aggregate," and the pebbles or rock the "coarse aggregate." Given clean aggregates and good cement and the road when finished will be durable, dustless, easily maintained, and smooth.

The two disadvantages, cracking and breaking at the edges, can both be overcome. Cracking, a result of temperature changes, and stress does little or no harm if the cracks promptly filled. Proper shoulders at the edge of the road eliminate the dangerous depression caused by the earlier neglect of this part of the road building, before it was understood how water and weather wear away the edge-protecting earth.

The two general types of concrete pavement are known as one-course and two-course pavement. The former consists of one course of concrete, all of which is mixed in the same proportion and composed of the same kind of materials, while the latter consists of two courses, usually mixed in different proportions and containing different kinds of aggregate. The one-course pavement is much simpler to construct than the two-course type.

In the two-course type of construction local course aggregate of average or low wearing qualities is used in the lower course and imported aggregate with high resistance to wear is used in the top course. If the only materials locally available for use as aggregate are of inferior quality, it is more economical to use them for aggregate in the lower course of a two-course pavement and import aggregate for the wearing course than to employ a one-course pavement and import all the aggregate.

Send Us Your Dates. If you contemplate making sale this Spring, it would be well for you to advertise your sale date in the Bulletin. Our large circulation makes a most excellent advertising medium and remember if we print your posters we advertise your sale in our register FREE. Phone us your date and get the bills printed any time.

Read the Bulletin. It pays to advertise in the Bulletin



"How far is it?" is the first question the prospective buyer asks of the real estate man who wants to show him a suburban home or a farm.

He doesn't want to know how far it is in miles, however. He wants to know in minutes or hours. "It is thirty minutes from the corner of Main and State Streets" tells the story. "It is seven miles out" does not. For "seven miles may mean seventy minutes, if the road is poor, whereas "thirty minutes" is definite.

A man has only so much time to spend. He can not add to the number of minutes in a day, or the number of days in his life. Therefore he wants to use a few of his minutes in non-productive, unnecessary, and unprofitable effort, as possible. It is for this reason he wants to know the distance from his new home and his office or business in terms of time. And it is for this reason he wants to locate on a good road, for only the good road can cut down his time, without increasing his cost! The railroad can serve only a limited number of suburban towns on any one line, and its trains can run only so often. He must waste time for them, going to and from them at both ends, suit his convenience to the schedule. With the good road he makes his own schedule, often beats the train as to speed, and always beats it in convenience in leaving home, getting into his conveyance, and getting out at or close to his place of business.

The good road—plus the motor—is translated in terms of time, and not distance, because it is time we have to spend, and time in which we have to live; it is only the amount of time consumed which counts, and not the mere number of feet or miles traveled in that time.

WANTS GOVERNMENT TO TAKE OVER ROAD

Bankhead National Highway Military Asset

Statistics gathered from State Highway Commissioners, Chambers of Commerce, Automobile Clubs, and others, have been compiled by Bankhead National Highway officials as ammunition in the campaign to have the road taken over by the Nation, to build its less improved portions and maintain it in perpetuity.

The Bankhead National Highway Association, which has gathered the data, states that a committee of leading citizens from each of the thirteen States the highway traverses will go to Washington and urge the passage of the measure.

Officials estimate that more than 1,600,000 people traveled over the road last year.

BRACE UP!

Do you feel old before your time? Is your back bent and stiff? Do you suffer urinary disorders? Don't despair—profit by Mt. Joy experiences. Mt. Joy people recommend Doan's Pills. Here's a Mt. Joy resident's statement:

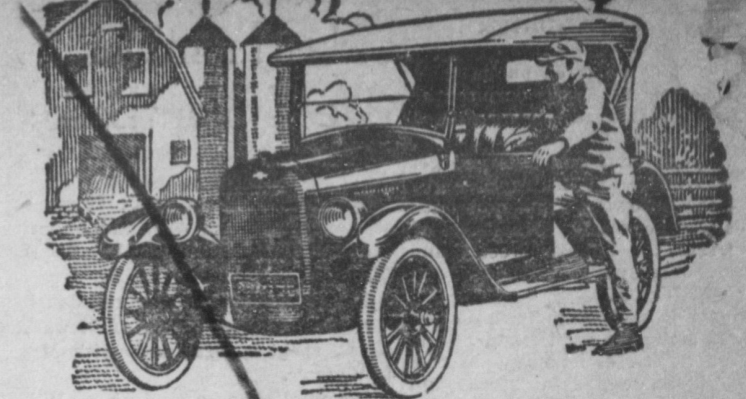
Mrs. Geo. Myers, 148 New Haven St., says: "My kidneys troubled me right along. My back was so weak at times I couldn't keep working. Any kind of housework was burdensome, on account of the sharp, grinding pains that went through my back. Often I had to sit down and rest as I could hardly endure the misery. I felt worn out before I did any work at all and then too, my kidneys acted irregularly. I was feeling miserable in every way when I bought Doan's Pills at Chandler & Co's. Drug Store. After using two boxes I was rid of the backache, I no longer felt tired, and my kidneys were restored to a normal condition."

Price 60c, at all dealers. Don't simply ask for a kidney remedy—get Doan's Pills—the same that Mrs. Myers had. Forest-Milburn Co., Mfrs., Buffalo N. Y.

An Illustrated Lecture Rev. J. B. McClure, of the United Evangelical Church of Manheim, will give an illustrated lecture on "The Life of Christ" at the United Evangelical Church, on Thursday evening, Feb. 21st. There will be special music. An offering will be taken for the benefit of the Women's Missionary Society.

Want a Fine Home? I am offering for sale the beautiful brick dwelling of the late E. Marsh Rexler on Marietta street. An inspection of this property will say more than I can. Come and look it over. No finer location in town. J. E. Schroll, Mount Joy.

Read the Bulletin. It pays to advertise in the Bulletin



Why Farmers are Turning to



for Economical Transportation

In 1922 Chevrolet jumped from seventh to second place in sales of all cars, and to first place in sales of fully equipped modern cars.

Purchases by farmers were the chief factor in this remarkable development.

Farmers want automobiles not only of low first price, but also of low later cost for operation and maintenance.

They want room, comfort, and the ability to stand up under hard conditions.

They find that Chevrolet, fully equipped as sold, is the best value per dollar in the low-priced field, and neighbors tell them it costs less per mile to operate.

Table with columns for Superior Roadster, Superior Sedan, Superior Touring, Superior Utility Coupe, Utility Express Chassis. Lists prices for various models.

E. B. ROHRER Mount Joy, Penna.

OYSTERS

Opened Fresh Daily and Served in All Styles. I Use Only Choice Prime Oysters for Frying.

FRIED OYSTERS 50c A DOZEN

Full Course and Platter Dinners Served Daily From 11:30 to 1:30.

Tables For Ladies

STUMPF'S RESTAURANT

Both Telephones West Main Street MOUNT JOY, PA.

Furniture

ARE YOU BUYING SATISFACTION WITH YOUR FURNITURE AND CARPETS? QUALITY AND SERVICE MAKE FOR SATISFACTION.

WE ASSURE YOU OF ALL THREE WE ARE DEPENDABLE

Westenberger, Maley & Myers

125-131 E. King St., Lancaster, Pa. 6 O'Clock Closing Saturdays

CLARENCE SCHOCK MOUNT JOY, PA.

WE ASK PATRONAGE WE GIVE SERVICE LUMBER-COAL

HAULING We are equipped to do all kinds of hauling, anything, anywhere and anytime. Special prices and attention given to the hauling of tobacco.

SLIDER & ERB ELIZABETHTOWN, PA.

Bell Phone 45R5 Ind. Phone 609 Jan. 16-3m

CAMERAS AND FILMS

For results have your films developed and finished by

W. B. BENDER

122 East Main Street, Mount Joy, Penna.