



BEGIN YOUR NEXT MERRY XMAS. NOW

If you had started saving a few cents a week a year ago today, how much easier it would have been to buy gifts this year. And how much merrier would the Christmas be with more and better gifts to hand to father or mother, sister or sweetheart, wife or daughter, or to the little kiddies that want them most?

Join Our Xmas. Savings Club Which is Now Open

And be ready with a nice snug bank account when Christmas comes again. The plan is simple, easy and satisfactory in every detail. Here it is:

In Class 1, you pay 1 cent the first week, 2 cents the second week, 3 cents the third week and so on for 50 weeks. Total \$12.75.
In Class 2, you pay 2 cents the first week, 4 cents the second week, 6 cents the third, week and so on for 50 weeks. Total \$25.50.
In Class 3, you pay 3 cents the first week, 6 cents the second week, 9 cents the third week and so on for 50 weeks. Total \$38.25.

You May Reverse The Payments If You Wish To Do So

For instance, in Class 2, the payments start with 2 cents and end with \$1.00. If you wish you may pay \$1.00 the first week and 2 cents less each week until the last payment is 2 cents and so on with all the classes. We also have five classes in which the payments are always the same, as follows:

Class 10-5—10 Cents Each Week, Total \$ 5.00
Class 25—25 Cents Each Week, Total \$12.50
Class 50—50 Cents Each Week, Total \$25.00
Class 100—\$1.00 Each Week, Total \$50.00
Class 200—\$2.00 Each Week, Total \$100.00
Class 500—\$5.00 Each Week, Total \$250.00

You may join as many classes as you wish.

Interest Is Allowed On All Classes At The Rate of 4 Per Cent

Every member of the family may join, from the youngest to the oldest—your neighbor and all their children are sure to join. No membership fee.

OPEN NOW

Come into the Bank and let us tell you all about the plan.

THE UNION NATIONAL MOUNT JOY BANK
MOUNT JOY, PENNA.

UPHOLSTERING and FURNITURE REPAIRING

I am prepared to do all kinds of FURNITURE REPAIRING and UPHOLSTERING at my residence.
Have those old pieces of Furniture made like new.
My charges are very reasonable and I guarantee satisfaction on all work.

CHAS. E. THOMAS
218 E. Donegal St., MOUNT JOY, PA.
Sept. 19-21

COAL COAL

ALL SIZES AND KINDS OF COAL ON HAND FOR IMMEDIATE DELIVERY. CARS ARE NOT USED ANY MORE.

NO REST—NO PEACE

There's no peace and little rest for the one who suffers from a bad back, and distressing urinary disorders. Mt. Joy people recommend Doan's Pills. Be guided by their experience. Ask your neighbor. Mrs. Jacob Childs, 125 Mt. Joy St., says: "For long time I suffered from terrible pains in my back, just over my hips. Headaches and dizzy spells came on and my kidneys acted irregularly. My rest was broken and mornings I felt all tuckered out. Doan's Pills were recommended so I bought a supply at Garber's Drug Store. Doan's helped me from the first and before long they so completely removed kidney trouble from my system that I felt like a different woman."

Mrs. Childs gave the above statement January 24, 1916. She confirmed it on May 6th, 1921 as follows: "The cure Doan's Pills made for me has lasted. I am in the best of health now and give all the credit to Doan's."
Price 60c, at all dealers. Don't simply ask for a kidney remedy—get Doan's Pills—the same that Mrs. Childs had. Forest-Milburn Co., Mfrs., Buffalo, N. Y.

ANIMALS SLAUGHTERED DURING PAST YEAR

Animals slaughtered under Federal inspection December 1923 with for year 1923. Animals slaughtered under Federal inspection December 1923: Cattle 759,250; pigs, 323,538; sheep, 977,681; 2,992; swine, 5,903,750. Twelve months ended December 1923: Cattle 9,162,516; pigs, 11,555,555; sheep, 11,555,555.

THE PRODUCE AND LIVE STOCK MARKET

CORRECT INFORMATION FURNISHED WEEKLY BY THE PENNA. BUREAU OF MARKETS FOR THE BULLETIN

Market extremely dull. Compared with week ago beef steers and bulls showing weaker tendency top beef steers \$9.00, bulk \$8.25-8.75. Compared with same week last year, top \$9.00, bulk \$7.75-8.75. Cows steady. Stockers and feeders inactive. Calves closed steady, top vealers \$14.00. Hogs steady, demand light, bulk to butchers \$8.10-8.25.

Receipts for Saturday's market: cars cattle from the following points: b Penna., 5 Chicago, 2 N. J., 1 Va., 1 Buffalo containing 294 head. 72 head driven in. Total: 366 cattle, 350 hogs.

Receipts for week ending Jan. 26, 1924: 62 cars cattle from the following points: 25 Chicago, 11 Pa., 6 Va., 3 St. Louis, 2 Buffalo, 2 Tenn., 2 Md., 2 W. Ba., 2 Ky., 2 N. J., 1 St. Paul, 1 Pittsburgh, 1 Kansas City, 1 Ohio, 1 Indiana containing 1519 head. 174 driven in. Total: 1693 cattle, 49 calves, 2103 hogs.

Compared with same week last year: 62 cars cattle containing 1600 cattle, 1561 hogs, 9 calves, 15 sheep.

Range of Price:

STEERS:
Good to choice \$9.25-10.25
Fair to good \$8.25-9.25
Medium to fair \$7.25-8.25
Common to medium \$5.50-7.75

BULLS:
Good to choice \$5.75-6.75
Fair to good \$5.00-5.75
Medium to fair \$4.50-5.00
Common to medium \$3.00-4.50

HEIFERS:
Choice to prime \$7.75-8.50
Good to choice \$7.25-7.75
Medium to good \$5.25-7.25
Common to medium \$4.00-5.25

COWS:
Good to choice \$5.25-6.25
Medium to good \$4.00-5.25
Common to medium \$3.25-4.00
Canners and cutters \$1.25-3.25

FEEDING STEERS:
Good to choice \$7.25-8.25
Fair to good \$5.25-7.25
Common to fair \$4.00-5.25

STOCK STEERS:
Good to choice \$6.50-7.50
Fair to good \$5.25-6.50
Common to fair \$3.00-5.25

STOCK BULLS:
Good to choice \$5.50-6.25
Fair to good \$4.25-5.50
Common to fair \$3.00-4.25

CALVES:
Good to choice \$12.00-13.00
Medium \$7.00-12.00
Common \$3.50-7.00

HOGS:
Heavyweight, 200-250 \$8.50-8.75
Mediumweight, 150-200 \$8.50-8.75
Lightweight, 100-150 \$7.75-8.50
Rough Stock \$6.25-7.75

Lancaster Grain and Feed Markets

Prices to Farmers
Wheat \$1.07
Corn, per bu.80
Hay (baled)80
Timothy \$25.00-\$26.00 ton
Straw \$12.00-\$13.00 ton

Selling Price of Feeds:

Bran \$39.00-\$40.00 ton
Shorts \$38.00-\$39.00 ton
Hominy \$43.00-\$44.00 ton
Middlings \$40.00-\$41.00 ton
Linseed \$55.00-\$56.00 ton
Gluten \$51.50-\$52.50 ton
Ground Oats \$40.50-\$41.50 ton
Cotton Seed 43 pc. \$61.00-\$62.00 ton
Dairy Feed 16 pc. \$37.00-\$38.00 ton
Dairy Feed 18 pc. \$41.00-\$42.00 ton
Dairy Feed 20 pc. \$54.00-\$56.00 ton
Dairy Feed 24 pc. \$52.50-\$53.50 ton
Dairy Feed 25 pc. \$53.50-\$54.50 ton
Horse Feed 85 pc. \$43.50-\$44.50 ton

Beets: Homegrown, good supply, 5-10c bunch.

Cabbage: Homegrown, good supply and condition, new stock 5-10-15 head.

Carrots: Southern, good supply, 5c bunch, 10c qt. box.

Celery: Homegrown and N. J. fair supply, 5-20c stalk.

Cauliflower: Homegrown, 15-30c head.

Lettuce: Nearby, 10-20c head.

Calif. Iceberg, 20-25c head.

Endive: 5-10c head.

Onions: Homegrown and Ohio, fair supply, 10-15c qt. box.

Parsley: Homegrown, good quality, 1-5c bunch.

Peppers: Homegrown, fair supply and quality, 1-3-5c each.

Potatoes: Nearby Irish Cobbler, new stock, 15-20c 1-4 peck, \$1.75-2.25 bushel. Small, \$1.00-1.50 ou.

Parsnips: Nearby, fair supply, 10c qt. box.

Radishes: Homegrown, 5-10c bunch.

Squash: Nearby, good supply, 5-10c each.

Sweet Potatoes: Dela. and homegrown, fair supply, 15-20c 1-4 peck.

Spinach: Homegrown, fair supply, 10-15c ¼ peck.

Turnips: N. J., fair supply, 20-25c ¼ peck.

Butter: 50-60c lb. Creamery 55-60c.

Eggs: 46-50c dozen, mostly 48c.

Poultry: Dressed chickens, \$125-2.00 each. Springers, 50-1.00 each.

Squabs, 25-40c each. Ducks \$1.50-2.00 each.

Apples: Homegrown, supply 15-40c peck. Crab apples 15c peck.

Bananas: Jamaica, good 25-35c dozen.

Grape Fruit: Fair 20c each.



From the fourteenth to the eighteenth of January there was held in Chicago the greatest exhibition of road machinery, materials, and methods ever staged in the history of road making.

It is difficult to estimate the importance of such a great exposition, either from the standpoint of the road builder or the road buyer. The intimate contact thus made possible between maker of machinery and maker of material can not but aid both to do better work. The bringing together of so many different ways of road making must be of incalculable value to the road buyer; the county and State engineer, the road supervisor, and the taxpayer. But perhaps the greatest benefit from this mutual contact of the forces which are behind the good road, is in the laying before the country, the magnitude of the effort involved and showing forth to the world what progress has been made in the hard surface highway idea.

Twenty years ago, before the automobile was more than a toy, the road idea was dead. "We didn't need roads. The roads we had were good enough. To spend money for roads was foolish. The railroads gave all the transportation necessary. Roads were merely an expense, a luxury, not an asset!" Such arguments were common. There were no road builders, there was no road building industry. To-day there are thousands of engineers, hundreds of firms making hard road building machinery and products for hard road making, and there is not a State uninterested in modern highways, not a county which isn't talking good roads, not a farmer who doesn't realize the need of them.

This great road exposition is a reflection of the times, and the road which is behind roads; hard roads, the sort of roads which minimize the hauling cost and give the maximum of speed and intercommunication. The road exposition at the Coliseum, in Chicago, is more than an exhibit; it is a monument to the modern idea of transportation.

STATEMENT REGARDING ARKANSAS ROADS

President Coolidge is backing the Secretary of Agriculture to the limit in his course toward the administration of Federal funds in Arkansas, where Federal funds are being withheld pending the correction of certain conditions.

Secretary Wallace states, regarding the affair:

"It is estimated that road improvement districts in Arkansas have issued bonds to the amount of about \$63,000,000. Of this only \$11,000,000, about 17 per cent in round numbers, has been used in connection with Federal Aid. The remainder has been used altogether on district projects, with which Federal aid has had nothing to do."

"Most of the Arkansas road districts, in connection with which there have been serious abuses and gross unfairness to the land-owning farmers, were created before Federal aid amounted to anything. Many of them had practically exhausted local funds before Federal aid was called for."

"Because of the peculiar road district system adopted in Arkansas Federal aid administration has been exceedingly difficult. In April, 1921, it was discovered that great injustices were practiced in these road districts, of which at that time there were more than 500, but in only 100 of which Federal aid had been granted. An engineer of the Department of Agriculture was sent into the State to make a careful investigation to secure information needed to administer Federal aid funds."

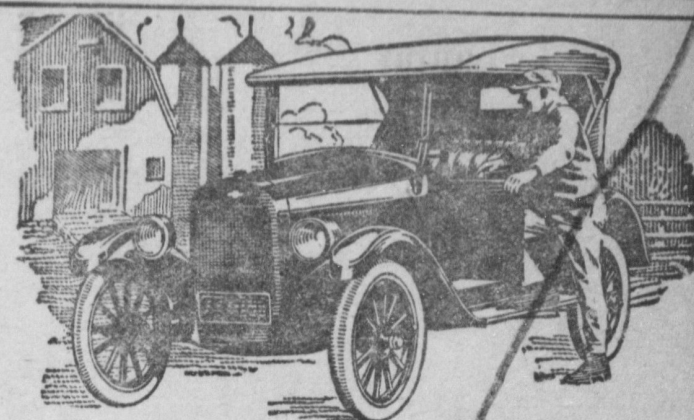
"He found many cases of bad management, careless handling and improper payments of local funds, excessive assessments on land owners, unbalanced and discriminatory assessments, ineconomic laying out of districts, and a general laxity in the organization to maintain the roads once they were built."

"The governor called a special session of the legislature to convene September 24. The legislature passed an act known as the Haerrelson law. It is better than the old law. Under it no new improvement district can be created except by a majority vote of the people within the district, and the assessment which may be levied on adjacent land is limited."

"The department has no intention of making any further investigation in Arkansas except as it may be necessary to administer Federal aid funds justly and efficiently."

COLLEGE GIFTS TOTAL \$200,000 IN ONE WEEK

Over \$200,000 in gifts and pledges were received by the Pennsylvania State College last week. It was the biggest financial week of its kind on record at the college. Most of this amount was in subscription pledges from the college alumni athletic advisory committee and from the new students enrolled at Penn State this year. The athletic council pledged \$110,000 towards new physical education buildings; student subscription received \$80,000 and a large number of new students from the class of '22, established by the college, provide an



Why Farmers are Turning to



for Economical Transportation

In 1922 Chevrolet jumped from seventh to second place in sales of all cars, and to first place in sales of fully equipped modern cars.

Purchases by farmers were the chief factor in this remarkable development.

Farmers want automobiles not only of low first price, but also of low later cost for operation and maintenance.

They want room, comfort, and the ability to stand up under hard conditions.

They find that Chevrolet, fully equipped as sold, is the best value per dollar in the low-priced field, and neighbors tell them it costs less per mile to operate.

Prices F. O. B. Flint, Michigan

Superior Roadster \$495
Superior Sedan \$795
Superior Touring \$495
Superior Utility Coupe \$640
Superior Light Delivery \$495
Utility Express Chassis \$550

E. B. ROHRER

Mount Joy, Penna.

OYSTERS

Opened Fresh Daily and Served in All Styles.
Use Only Choice Prime Oysters for Frying.

Full Course and Platter Dinners

Served Daily From 11:30 to 1:30.

STUMPF'S RESTAURANT

Both Telephones

West Main Street

MOUNT JOY, PA.

Furniture

ARE YOU BUYING SATISFACTION WITH YOUR FURNITURE AND CARPETS?
QUALITY AND SERVICE MAKE FOR SATISFACTION.

WE ASSURE YOU OF ALL THREE
WE ARE DEPENDABLE

Westenberger, Maley & Myers

125-131 E. King St.,

6 O'clock Closing Saturdays

Lancaster, Pa.

CLARENCE SCHOCK

MOUNT JOY, PA.

WE ASK

PATRONAGE

WE GIVE

SERVICE

LUMBER-COAL

HAULING

We are equipped to do all kinds of hauling, anything, anywhere and anytime.
Special prices and attention given to the hauling of tobacco.

SLIDER & ERB

ELIZABETHTOWN, PA.

Bell Phone 45R5

Ed. Phone 609

Jan. 16-3mos.

CAMERAS AND FILMS

results have your films developed