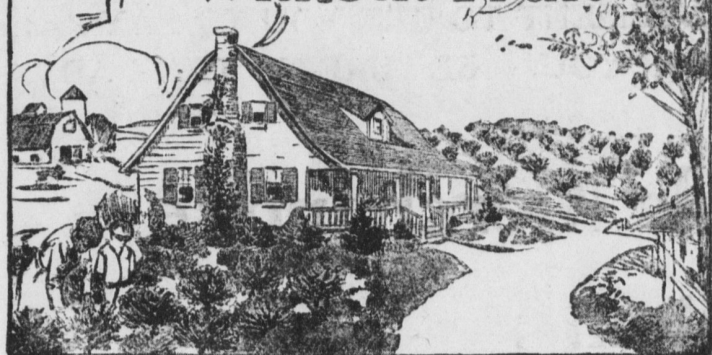


Schroll's Realty News

It's Not a Farm Home Without Fruit



Large or Small Farms, Mansions, Business Places, Building Lots==Anything

I AM PLEASED TO INFORM PROSPECTIVE REALTY PURCHASERS THAT HERE IS A VERY GOOD LIST OF OFFERINGS. ALL PRICED TO SELL. I HAVE ANYTHING FROM A \$500 HOUSE TO A \$30,000 MANSION OR FROM A ONE ACRE TRUCK PATCH TO A 800 ACRE FARM.

YOU WILL FIND LISTED BELOW ALMOST ANYTHING YOU ARE LOOKING FOR AND IN CASE YOU DON'T SEE WHAT YOU WANT, PLEASE PHONE, CALL OR WRITE AND I'LL BE JOHNNY ON THE SPOT. YOU KNOW IT'S MY BUSINESS TO HELP YOU BUY OR SELL PROPERTY.

IF YOU WANT A POUND OF SUGAR YOU GO TO A GROCER; IF YOU WANT A NEW SUIT YOU GO TO A CLOTHIER, AND IN CASE YOU WANT TO BUY OR SELL A PROPERTY WHY NOT GO TO A REALTOR THAT WILL DEAL FAIR AND HONEST WITH YOU.

YOU ARE NOT UNDER OBLIGATIONS IF YOU COME TO ME. I WILL CHEERFULLY SHOW YOU ANY PROPERTY I HAVE AND REMEMBER THERE IS NO CHARGE. STOP AT MY OFFICE ANY TIME YOU ARE IN MOUNT JOY.



TRUCK FARMS

No. 107—A 3 1/4 acre tract of land in East Donegal, near Reich's church, frame house, tobacco shed, barn, etc. \$2,000.00.

No. 183—2 acres and, rather rough, large double house, fine for poultry. \$650.

No. 184—13 acres of sand and limestone in Rapho, frame house, good bank barn, fruit, running water. July \$2,000.

No. 196—A 2-acre tract in East Donegal near Maytown, 8 room house, stable, chicken house, pig sty, house newly painted for only \$1,300.

No. 200—A 14-acre ideal truck farm along state highway east of Elizabethtown. Brick house with light and heat, stable, etc.

No. 203—An 11-acre truck and poultry farm in Mt. Joy twp. Wonderful shape. Good reason for selling. Convenience.

MEDIUM SIZED FARMS

No. 178—A 30-acre farm in Rapho twp., near Manheim, good buildings, and very productive. Price interesting.

No. 185—A 42-acre poultry and duck farm known as the Spring Lake duck farm, in Cumberland county, one of the best electric lights, etc.

LARGE FARMS

No. 9—A 149 acre farm, iron stone so, on Scriver pike, bank barn, 8-room house, shedding for 20 acres tobacco. \$90 per acre.

No. 91—A 65 acre farm near Conewago Station, all farm land, running water, bank barn, brick house, etc., for \$5,000. Immediate possession.

No. 138—A 81 acre farm of all limestone soil in East Donegal, 11-room stone house, barn, tobacco shed, 5 acre meadow, 3/4 of money can remain.

No. 148—A 114 acre farm near Sunnyside, 10 acres meadow, sand and gravel, 2 frame houses, big barn, tobacco shed, etc., good reason for selling. Price right.

No. 151—A 170 acre farm, 80 A. farm land, balance pasture, some timber; 2 buildings, 2 silos, shedding for tobacco, a real farm.

No. 154—183 acres, 120 farm land 31 acres timber, good buildings including silo, possession any time; a large portion of money can remain.

No. 161—A 235 acre farm in Indiana Co., 175 acres farm land, balance timber, good buildings, young orchard, fine water and close to markets, schools and churches.

No. 161—The Clover Dale farm on state road 2 1/2 miles west of Elizabethtown, 95 acres, 15 acre meadow, brick house, good barn, silo, etc., \$137 an acre.

No. 179—107 acres of limestone in East Donegal, new barn, brick house, meadow with spring water, 2 tobacco sheds, price very reasonable.

No. 175—A 95 acre farm 2 miles from Elizabethtown on the state road, frame barn, brick house, silo, meadow. \$135 an acre.

No. 189—70 acre farm just outside of Elizabethtown on State Highway, very modern barn, new hog sty, silo. Price right.

No. 198—A 102 acre farm, gravel soil, brick house, new barn, and tobacco shed. A wonderful tobacco farm. Possession any time.

No. 201—104 acres in the heart of East Donegal tobacco district, fine buildings, shedding for 12 acres of tobacco. This is a real farm.

DWELLING HOUSES

No. 83—A frame house and business stand on E. Main St., Mt. Joy, in business center. All improvements.

No. 84—A frame house adjoining No. 83; fine shape, all improvements, prefer to sell both.

No. 147—Acre of ground with 10-room brick house, good repair, steam heat, at railroad. Near Marietta.

No. 149—A beautiful 7-room and bath brick bungalow in Marietta boro. Very modern, beautiful location and price right.

No. 166—Fine corner lot in residential section of Mt. Joy, 13-room brick house with all conveniences, gas, steam heat, electric light, bath, etc. A very good buy.

No. 168—Lot 40x200 in Florin, frame house, frame stable, etc.

No. 186—An 8-room frame house, garage, steam heat, electric light, on West Main street, Mount Joy.

No. 190—Double lot with brick house in Mt. Joy, all conveniences, very modern in every respect, will sell worth the money.

No. 195—An 11-room frame house with electric lights, heat bath, water, green house, stable, etc., in good condition. This house is in Rowenna.

No. 197—Large dwelling on second floor and creamery room in basement with complete equipment. 1-2 acre ground along a stream. Price complete including everything \$7,000.



No. 199—A 13-room brick house, garage, etc. on North Market street, Mount Joy. Will rent or sell.

No. 202—A very beautiful corner property in residential section, like new, very modern, all conveniences. Price will sell it quick.

FACTORY BUILDINGS

No. 140—3 acres and 49 perches of land in East Donegal with large stone mill converted into flats for residences. \$2,000.

BUSINESS STANDS

No. 63—The entire concrete block manufacturing plant of J. Y. Kline at Florin, together with all stock, machinery, buildings, contracts, etc. Price very low.

No. 160—A very good business proposition in Mount Joy, including several houses on Main street.

BUILDING LOTS

No. 2—Several Lots, each 50x200 ft. on North Barbara St., Mt. Joy.

No. 46—Four Lots in Florin, 40x200 ft. They front on Church St.

No. 77—Very desirable building lot fronting on the south side of Marietta street. Will sell any number of feet you want at \$6 per foot.

No. 57—A 5 acre tract in the boro of Mount Joy, fine large lot and would be a money-maker for trucking or speculating on building lots.

No. 163—A fine building lot on East Main street. Price right.

No. 171—Large number of building lots between Mt. Joy and Florin. I can give you any number of lots at any location, at almost any price.

No. 204—A 50-ft. lot on Donegal Springs St., Mt. Joy. A real building lot.

JUST LAND

No. 42—An 85 acre tract of farm timber and pasture land in West Donegal township, tract adjoining Mason's Homes ground on two sides. Price very low.

No. 169—A 15 acre tract between Mt. Joy and Florin. A real investment to some speculator.

FACTORY SITES

No. 10—A tract fronting 107 ft. on the P. R. R. siding in Mount Joy, has many advantages and centrally located. One of the best in the town.

I also have a number of properties that owners do not care to have advertised. If you don't find what you want in this list, call and see me. I have it.

THE PRODUCE AND LIVE STOCK MARKET

CORRECT INFORMATION FURNISHED WEEKLY BY THE PENNA. BUREAU OF MARKETS FOR THE BULLETIN

Supplies were liberal in all the markets and with buyers out in force trading was active. Raspberries and cherries continue in good supply. Blackberries were more plentiful. Cantaloupes fairly flooded the markets and showed a sharp decline in price. Eggs held around the 30c per dozen mark. Other lines held practically steady.

Asparagus: Homegrown, fair supply 8-10-15c bunch.

Beets: Miss., good supply, new stock, 10c bunch.

Cabbage: Miss., fair supply, good condition, new stock, 10-25c head.

Carrots: Nearby, good supply, 5c bunch, 10c qt. box.

Cucumbers: Fla., fair supply, 5-10c each.

Celery: Fla., fair supply, 15-25c stalk.

Cauliflower: Homegrown, 8-25c head.

Egg Plant: Southern, 10-15-20c each.

Lettuce: Nearby, 10-20c head. Calif. Iceberg 15-25c head.

Endive 5-10c head.

Parsley: Homegrown, good quality, 1-3c bunch.

Peppers: Fla., fair supply and quality 5-10c each.

Potatoes: Nearby Irish Cobbler, good quality, 15-20c 1/2 peck, 85c-1.00-1.10 bu. Md. new stock, 20-15-20c qt. box.

Parsnips: Nearby, fair supply, 10c qt. box.

Beans: Homegrown and Md., yellow and green, fair supply, 15-20c 1/2 peck.

Peas: N. J., fair supply, 20-25c 1/2 peck. Homegrown sugar peas 25c qt. box.

Poke: Nearby, good quality, per bunch 5-8-10c bunch.

Onions: New Texas, fair supply, 10c pint box, green 5-8c bunch.

Squash: Nearby, good supply, 5-10c each.

Sweet Potatoes: Dela. and homegrown, good supply, 25-30c 1/2 peck.

Spinach: Southern, fair supply, 12-15c 1/2 peck.

Tomatoes: Fla., fair supply, 15-25c pint box.

Turnips: Miss., fair supply, 20-25c 1/2 peck.

Rhubarb: Nearby, fair supply, 5c bunch.

Radishes: Homegrown and southern, good supply, 5-10c bunch.

Butter: 45-55c lb, mostly 50 c.

Creamery 48-55c lb.

Eggs: 28-30c dozen, mostly 30c.

Duck eggs 40c dozen.

Poultry: Dressed chickens, \$1.25-2.50 each. Springers, 75c-1.00 each. Squabs, 25-50c each. Ducks, \$1.50-2.00 each.

Fruits

Apples: Homegrown, various varieties, fair supply, 40-50c 1/2 peck, some extra fancy, 60c 1/2 peck.

Bananas: Jamaica, good supply, 25-35c dozen.

Grape Fruit: Fla., good quality, 10-20c each.

Apricots: Calif., 10-15c pint box.

Cantaloupes: Cal., fair supply, 10-12c each.

Lemons: Calif., good quality and supply 30-40c dozen.

Oranges: Calif. and Fla., supply good, quality and condition good, 25-75c dozen.

Peaches: Geo., fair supply, 20c pt. box.

Plums: Calif., 10-15c pint box.

Pineapples: Fla., fair supply, 15-30c each.

Cherries: Nearby, fair supply, 15-25c qt. box. Calif., 20c pint box.

Gooseberries: Nearby, 15-20c qt. box.

Currants: Nearby, 15-18c qt. box.

Raspberries: Nearby, black, fair supply, 20-25c qt. box. Red, 35-45c qt. box.

Medium to good \$7.00-7.50
Common to medium \$5.50-7.00
COWS:

Good to choice \$5.50-6.50
Medium to good \$4.25-5.50
Common to medium \$2.50-3.75
Canners \$1.50-2.50

CALVES:
Good to choice \$10.50-13.00
Medium \$7.25-10.50
Common \$4.00-7.25

HOGS:
Heavyweight 20-250 \$8.00-8.50
Mediumweight 150-200 \$8.25-9.00
Lightweight 100-150 \$8.00-8.75
Rough stock \$6.00-7.75

Lancaster Grain and Feed Markets Prices to Farmers
Wheat: New, 95c bu., Old \$1.00 bu.
Corn: 90c bushel.
Hay (baled)
Timothy \$16.00-17.00 ton
Straw \$9.00-10.00 ton

Selling Price of Feeds
Bran (pure) \$34.00-35.00 ton
Shorts \$39.50-40.50 ton
Midlings \$41.50-42.50 ton
Linseed \$49.00-50.00 ton
Gluten \$48.00-49.00 ton
Ground Oats \$39.50-46.50 ton
Hominy \$44.00-45.00 ton
Cottonseed 43% \$56.00-57.00 ton
Dairy Feed 15% \$34.00-35.00 ton
Dairy Feed 16 1/2% \$36.00-37.00 ton
Dairy Feed 20% \$41.00-42.00 ton
Dairy Feed 24% \$48.00-49.00 ton
Dairy Feed 25% \$50.00-51.00 ton
Horse Feed 85% \$43.00-44.00 ton

PLANS FOR 1924 STATE FARM SHOW NOW UNDER WAY
Pennsylvania's next annual exhibition of its varied agricultural products, the 1924 State Farm Products Show, will be held in Harrisburg the week of January 22-25.

The premium lists for the competitive exhibits are now being prepared by the Show committee, and should be ready for distribution in good time to enable prospective exhibitors to carefully select products for entry and get them ready for the show.

At a recent meeting of the committee in the Department of Agriculture offices, preliminary plans for the various exhibits were drafted, including several new features that are being considered, special exhibits of dairy cattle, beef cattle, and horses, an educational machinery display, and a four-breed poultry show which will be representative of the Pennsylvania poultry industry.

It is expected that the same buildings that were used in staging the 1923 Show will again be available for the coming event, with the possibility of securing an additional 20,000 square feet of exhibit space in one of the buildings.

No admission fee is to be charged. Additional revenue to meet the increased premium awards and other expenses of the show is to be sought in other quarters. The expenses of speakers for the meetings of the several state agricultural associations holding their annual gatherings at the time of the Farm Products Show will in the future be paid by the respective associations.

The entire financial problem, together with suggested methods of increasing the working funds for the Show, is being considered by a subcommittee which is to make a report of its findings at the next meeting of the general committee, on September 10.

The Harrisburg Chamber of Commerce will again assist the show officials in handling the crowds by securing adequate housing facilities for the host of people that visit the Capitol City while the show is in progress.

TO KNOW SPRAYING DATES SAVES ORCHARDISTS MONEY
While it has long been recognized that climatic factors influence the severity of the ravages of the codling moth in fruit orchards, it was not until recent years that the close relationship between the temperature of the air and the development and activity of the moths has been studied and charted.

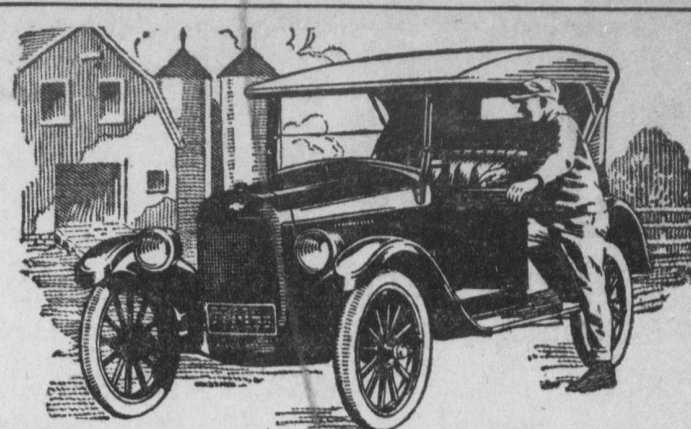
Cooperation between meteorologists and entomologists of the United States Department of Agriculture and State horticulturists in Washington has contributed to the more efficient control of the moth, which is particularly destructive to apples and pears.

Experiments conducted at the Weather Bureau station at Walla Walla, Wash., have shown that codling moths do not deposit eggs when the temperature is below 60 degrees F. Observations have shown also that three-fourths of the eggs are laid between 3 p. m. and 9 p. m. The practical application of these facts is that when there is a temperature of 60 degrees F. or higher at 8 p. m. for two or three nights in succession the use of a spray is indicated, as enough eggs will have been produced to cause considerable later damage.

As these eggs will hatch in from one to three weeks, depending on the temperature, the spray must be applied accordingly. If the weather turns cold after the eggs are laid, that is, with maximum temperatures of 70 degrees or below, the spray would not have to be on the trees for 10 days or two weeks while it remains at 75 degrees F., or higher the spray should be on in a week.

As the cost of spraying adds materially to the expenses of an orchard it is very essential that the work be done when most effective. Thermometer shelters have been installed by the Weather Bureau in three different parts of the Walla Walla fruit district, to aid in the work of determining the proper spraying dates for the codling moth.

Can You Believe This? Advertising is the foundation of all successful enterprises. If your advertisement were here it would be read by every reader of the Bulletin. The Bulletin contains more local and up-to-the-minute news than any weekly in this section. Compare it and convince yourself. It only costs \$1.50 a year.



Why Farmers are Turning to



for Economical Transportation

In 1922 Chevrolet jumped from seventh to second place in sales of all cars, and to first place in sales of fully equipped modern cars.

Purchases by farmers were the chief factor in this remarkable development.

Farmers want automobiles not only of low first price, but also of low later cost for operation and maintenance.

They want room, comfort, and the ability to stand up under hard conditions.

They find that Chevrolet, fully equipped as sold, is the best value per dollar in the low-priced field, and neighbors tell them it costs less per mile to operate.

Prices F. O. B. Flint, Michigan

- SUPERIOR Two-Passenger Roadster - \$510
- SUPERIOR Five-Passenger Touring - \$525
- SUPERIOR Two-Passenger Utility Coupe - \$480
- SUPERIOR Four-Passenger Sedanette - \$570
- SUPERIOR Five-Passenger Sedan - \$600
- SUPERIOR Light Delivery - \$510
- SUPERIOR Commercial Chassis - \$425
- Utility Express Truck Chassis - \$375

E. B. ROHRER, Mount Joy

BINDER TWINE

WE HAVE ON HAND A FINE LOT OF

DEERING and PLYMOUTH

BINDER TWINE

500 feet to the pound and a Special Twine 650 feet to the pound. MY PRICE IS RIGHT. We will also furnish.

REPAIRS FOR ANY MACHINE YOU HAVE

We are prepared to fix your knives, canvass, etc. We have a

ONE MAN HAY LOADER

Set up to show you. This loader was gotten up by a farmer. One man and a boy can do the work. A great Labor Saving Machine. Come and see it.

The Juno Locomotive Electric Washing Machine

Is the greatest proposition on the market today. With The Locomotive Washer it is unnecessary to lift the clothes from the wash boiler into the wash machine, as the machine itself boils the clothes. The heating attachment is a wonderful feature of The Locomotive Washer as it boils and sterilizes the clothes while washing them. PRICE, ONLY \$100.00. We Solicit your patronage.

G. MOYER

West Donegal Street, Mount Joy, Pa.

We Pay Your Carfare on Purchases of \$15

Donovan's

Store Open Saturday Evenings Until 9 O'clock

SUMMER STORE HOURS

During the month of July and August this store will open at 8 A. M. and Close at 5 P. M. with the exception of Thursday when the store will be closed all day to give our store family an opportunity to enjoy an outing with their family.

Store Open Saturday Evenings Until 9 P. M.

For the Convenience of the shopping public who are unable to shop during the week.

Use Our Mail Order Service



TheWishbone Valveless - Blue Flame BROODER.

L. W. Mumma

FLORIN, PA.

CHAS. Z. DERR

LOCAL AND LONG DISTANCE TRUCK SERVICE MOVING ESPECIALLY

Bell Phone 11R4. Mount Joy, Pa.

J. E. Schroll, Mt. Joy