

of prede... more birds' eggs and young... poultry than any other bird that... usually kill... All game destroying animals and birds are classed by sportsmen and game lovers as vermin, and it is expected that vermin hunting clubs can be organized here and that members of established gun clubs will join in the movement by going into the woods and shooting as many game destroyers as they can find.

THE PRODUCE AND LIVE STOCK MARKET

CORRECT INFORMATION FURNISHED WEEKLY BY THE PENNA. BUREAU OF MARKETS FOR THE BULLETIN

The markets were crowded with eager buyers. Supplies were liberal and of good quality. Homegrown products were in evidence, including strawberries, cherries and sugar peas. Principles were active in dozen lots for canning and preserving. Eggs held about steady, selling mostly at 27 cents per dozen. Other lines showed practically no change in prices.

Asparagus: Homegrown, fair supply, 10-15 and 20c bunch.

Beets: Homegrown, good supply, 5c bunch, new stock Texas, 10c bunch.

Cabbage: N. Y. and homegrown, fair supply, good condition, 10-15c head. New stock 15-25c head.

Cauliflower: Calif., supply liberal, good quality, 15-50c head.

Carrots: Nearby, good supply, 5c bunch, 10c qt. box.

Cucumbers: Fla., fair supply, 5-10c each.

Celery: Nearby and N. Y., good supply, 10-25c stalk.

Lettuce: Nearby, 10-20c head. Calif. Iceberg 15-25c head.

Endive 5-10c head.

Parsley: Homegrown, good quality, 1-3c bunch.

Peppers: Fla., fair supply and quality, 3-5c each.

Potatoes: Nearby Irish Cobbler, good quality, 15-20c 1/2 peck, 85c-1.00 bu. New stock Florida 15-25c qt. box.

Parsnips: Nearby, fair supply, 10c qt. box.

Poke: Nearby, good quality, per bunch, 15-20c.

Onions: Nearby and Ohio, good supply, 10-15c qt. box. Spanish 5-10c each. Green 5-10c bunch. Onion Sets 10-15c qt.

Squash: Nearby, good supply, 5-10c each.

Sweet Potatoes: Dela. and homegrown, good supply, 25-30c 1/2 peck.

Spinach: Southern, fair supply, 12-15c 1/2 peck.

Tomatoes: Fla., fair supply, 15-25c pint box.

Turnips: Nearby, fair supply, 15-20c 1/2 peck.

Rhubarb: Nearby, fair supply, 8-15c bunch.

Radishes: Miss., fair supply, 5-10c bunch.

Beans: Fla., yellow and green, fair supply 20-25c 1/2 peck.

Peas: Fla., 15-20c qt. box.

Butter: 45-55c lb. Creamery 50-60c lb.

Eggs: 26-28 c dozen, mostly 27c. Duck eggs 40c dozen.

Poultry: Dressed chickens, \$1.25-2.50 each. Springers, 75c-1.00 each. Squabs, 25-50c each. Ducks, \$1.50-2.00 each.

HOME HEALTH

WEEKLY LETTER WRITTEN EXPRESSLY FOR THE BULLETIN BY DR. DAVID H. REEDER

COLOR AND HEALTH: Light is one of the small parts of the sun's rays. I told you in a recent article that only 13 per cent of the sun's rays are visible and these are the light rays.

Now light is a vibration and likewise color is a vibration. Various colors have their own rate of vibration. That's why there are different colors.

After many years of painstaking experiments and careful observation, it has been conclusively demonstrated that disease also is a vibration, the same as health, light and color.

It has also been conclusively proven that each disease has its own particular vibration.

The vibration of cancer is always the same whether in man or woman. Tuberculosis has a rate of vibration that is somewhat similar to cancer but is distinct. Flu, epilepsy, malaria, syphilis, insanity of certain types, and in fact, the rate of vibration of every disease has its own particular mode of motion.

The useful, in fact, wonderful part of this scientific experimentation, is that each and every one of the diseases has a rate of vibration that is identically the same as some certain color or blending of colors.

Through the use of the various colors a physician who has been well trained in diagnosis can not only determine positively what disease anyone may have, but with the proper use of these colors he can greatly aid the cure of the disease for the reason that the same vibration applied through that particular colored light will destroy the disease vibrations.

Of course, the application of heliotherapy through colors would be all Greek to you and likewise to a physician who has not made a special study of it, but I am going to tell you how you can do a little experimenting for yourself, and then you will know more about it, and will go to a doctor who knows if at any time you get sick and get no relief.

On a day when the sun shines clear and hot, dress yourself entirely in black, even a black hat, then go out and work in the sun. You will suffer intensely. Not only will the heat of the sun penetrate deeply, but you will be depressed and practically not to work.

Now go in and change to a bright blue, bright green, or a soft gray, one or the other throughout, and again work in the sun.

The thermometer will tell you that there has been no change in temperature, but you would declare that it has turned many degrees cooler.

You can then experiment with your nerves and feelings and you will find that red clothes or even pink will cheer you up, make you more energetic and full of life and vitality. Blue will depress you, make you a regular old sobersides. For nervous people, blue is soothing and restful.

In decorating dark rooms, use plenty of yellow or orange. Sun colors, they brighten and lighten. You will find that a room that is decorated with bright colors in which yellow predominates, will be much more cheerful than if draped in dark blue or other dark colors.

The reason why you suffer more with the heat while dressed in black is because the longest rays of the sun penetrate deeply through black, while the ultra-violet or surface burning rays, as well as the light rays, are filtered out by the black.

The long rays of the sun penetrate deeply into the black earth, even through frozen earth, and people who notice natural things, sometimes wonder why the frost seems to go out of the ground from below the surface faster than from above. I have heard people say that it was due to the inner heat of the earth, but this is incorrect. It is due to the deeply penetrating long or red rays of the sun which can go through the frost without melting it but will melt things beyond it.

You can prove this by sitting in the sun which is shining through a large plate glass window. The sun warms you, but the glass remains cold.

I am very thankful that the rates of vibration of various diseases and of colors have been so carefully worked out. Much suffering now considered incurable will be relieved as more physicians learn the technique and treatment through this most accurate method.

BOOTH'S DEPARTMENT STORE

EAST MAIN AND MARIETTA STREETS

SAVE THE DIFFERENCE
SAVE on Knit Underwear
Exceptional Values Prevail in most wanted kinds of KNIT UNDERWEAR as well as the Popular Nainsook Underwear for Summer. Secure all you'll need for the season at Substantial Savings.

FOR WOMEN
Fine Cotton Union Suits, Band Top, Low Neck, Shell Knees. All sizes, 50 cents.
Ribbed Cotton Vests, comfy-cut, all sizes, several styles, 15 cents.
Swiss Ribbed Lisle Vests, low neck, no sleeves, all sizes, 25 cents.
Envelope Chemise, 50 cents.
White Batiste, trimmed with hemstitching and French knots, band top, shoulder straps.
CRETONNES for Most Anything 22c and 30c.
In enough patterns and enough colorings for all the windows and all the draperies and all the coverings in the home.

FOR CHILDREN
Children's Nainsook Drawer Bodies, 29 cents.
Children's Ribbed Cotton Waist Suits, 50 cents.
Boys' Cotton Union Suits, knee length, 50 cents.

FOR MEN
Checked Nainsook Union Suits, Athletic cut, 65 cents.
Balbriggan Cotton Shirts and drawers, 50 cents.

EVERY JUNE BRIDE
Needs ALUMINUM Cooking Utensils. We offer a fine line of LIFE TIME Pure Aluminumware. Every piece is guaranteed and your gift will be appreciated as long as the name of the ware.

SAVE ON

| | |
|----------------------------|-------------|
| 6 qt. Stewing Kettles |\$1.39 |
| 1 1-2 qt. Aluminum Pitcher |\$1.25 |
| 1 2-2 qt. Aluminum Pitcher |\$1.39 |
| 4 qt. Preserving Kettles |98c |
| 5 cup Percolators |\$1.39 |
| 6 qt. Preserving Kettles |\$1.39 |
| 4 qt. Stewing Kettles |\$1.10 |
| 2 qt. Stewing Kettles |25c |

SAVE in Our Economy Grocery Department

Jiffy-Jell, all you want, per package, 5 cents.
Maple Flako, 2 packs for 25 cents.
A new cereal wheat flake with bran
Our fancy Table Syrup, 16c quart
There's something on bread spread with our syrup.
Juicy tender Ham Butts, per lb., 22 cents. Lots of meat and practically no bone.
Tomato Soup, per can 8 cents.
Spear Mint Gum Drops, lb., 19c.

Corn Flakes, 3 packs 25 cents.
Rolled Oats, 6 lbs 25 cents.
Ambassador Peaches, large can 27c
Gal. Can Apple Butter 78c
With that real apple flavor.
Herring Roe, can 25 cents.
Corn Starch, package 7 cents; for 25 cents.
Hershey Cocoa, can 8 and 15 cts.
Instant Tapioca, pkg., 10 cents.
White Rose Buckwheat and Pancake Flour, 3 pks. 25 cents.

We Carry Stoneware in All Sizes

CHANDLER CARS

with the new
Pikes Peak Motor

We are prepared to show, not by verbal claim, but by the proof of performance, that this combination of Car and Motor meets every demand that could be exacted of the ideal automobile.

5-Passenger Touring Car sells for \$1615 delivered.
5-Passenger Chummy Sedan sells for \$1925 delivered.

Sold by
P. Franck Schock
Mount Joy, Pa.

may 2-4f

We Pay Your Carfare on Purchases of \$15

Lancaster's Leading Department Store
Donovans
Store Open Saturday Evenings Until 9 O'Clock

ANNUAL JUNE SELLING EVENT
Begins Friday, June 8th

\$25,000 Surplus Stocks of brand new Summer Merchandise at a genuine and worth while saving!

Every item offered in this sale is backed by the Donovan guarantee of perfect satisfaction or replacement will be made FREE

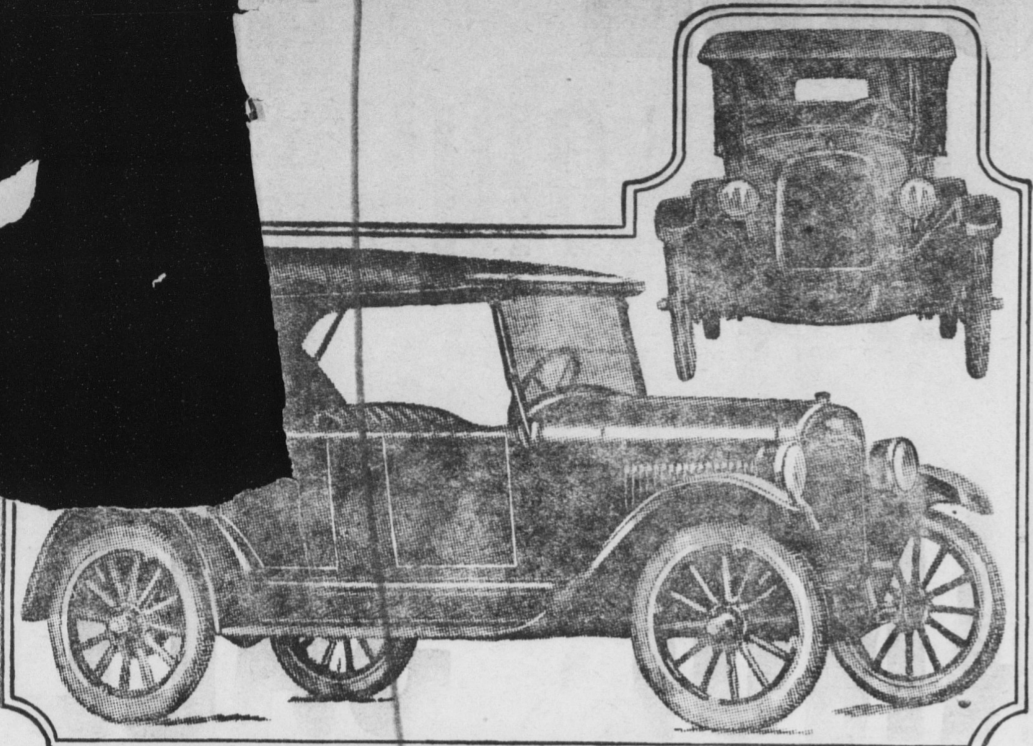
Use Our Mail Order Service

TheWishbone Valveless - Blue Flame BROODER

Unquestionably the best way to raise chicks

No valves, no thermostats, no strainers to go wrong. Touch a match to the burner and a blue flame shoots up. Inexpensive, Economical, Trouble-proof. Let us show you a Wishbone.

L. W. Mumma
FLORIN, PA.



Announcing 1923 SUPERIOR Models

Again Chevrolet Motor Company has emphasized its admitted leadership as producer of the World's Lowest Priced Quality Automobiles. The 1923 SUPERIOR models—one of which is here illustrated—represent the most sensational values in modern, economical transportation ever established.

QUALITY has been still further improved by more artistic design and added equipment.

COMFORT has been still further increased by engineering refinements and facilities.

is now offered on a flat rate basis by 10,000 dealers and millions.

remain the same in spite of added equipment and more expensive production, which has greatly increased value.

Some Distinctive Features

Streamline body design with high hood; vacuum feed and rear gasoline tank on all models; drum type head lamps with legal lenses. Curtains open with doors of open models. Closed models have plate glass Ternstedt regulated windows, straight side cord tires, sun visor, windshield wiper and dash light. The Sedanette is equipped with auto trunk on rear.

Prices f. o. b. Flint, Mich.

| | |
|-----------------------------|------------|
| Five Passenger Touring |\$525 |
| Two Passenger Roadster |510 |
| Five Passenger Sedan |860 |
| Four Passenger Sedanette |850 |
| Two Passenger Utility Coupé |680 |

See these remarkable cars. Study the specifications
Nothing Compares With Chevrolet

B. ROHRER, MOUNT JOY, PA.

BIG OPENING SALE

Since Remodeling my store, thereby giving me much more additional floor space, I have practically doubled my stock. My line of merchandise is now as complete as can be found anywhere. A visit to the store will convince you. This will be my opening sale and I have priced stock accordingly. Call and let us show you what we have.

JUST A FEW OF THE MANY SPECIALS

| | |
|---|--|
| A special lot of Corsets that were \$2.00 to \$5.00. Priced at from79c to \$1.99. | Ladies' White Canvas Pumps and Oxfords. \$1.49 |
| Lot of Pongee, Voile and Linen Dresses in all shades, for Women, Misses' and Children at great savings. | Children's White Canvas Oxfords and Pumps big values at98c to \$1.49 |
| Ladies' White Skirts, each98c | Men's Tan Oxfords in Goodyear Welts.....\$1.99 |
| Ladies' and Misses' Pink and White Bloomers 48c | Men's Scout Shoes, the real kind at\$1.99 |
| Ladies' Brassiers, each15c | Men's Dress Shoes and Oxfords, in Tan, Gun Metal and Patent\$3.48 and \$3.98 |
| Ladies' Gauze Union Suits at.....48c | Big Bargains in Men's Trousers at \$1.29 to \$2.98. |
| Ladies' Gauze Vests at15c | Lot of Men's Suits in all the latest styles and shades from\$14.98 up. |
| Lot of Ladies' Slip Over Sweaters at.....\$1.98 | Men's Athletic Union Suits at.....59c |
| A Fine Line of Small Boys' Wash Suits 48c Up | Men's Gauze Union Suits.....89c and 98c |
| Lot of Turkish Towels at.....15c | Lot of Infants Pumps and Oxfords in all shades |
| A Good Lot of Boys' Blouses at.....48c | Misses' and Children's Socks in all shades, short and three-fourth lengths at from19c Up |
| Crash Linen Bloomer Pants.....69c and 79c | Ladies' Silk Hosiery at.....48c |
| Lot of Boys' Kahki Knee Pants 69c and 79c | |
| Ladies' Handkerchiefs at.....5c | |
| Ladies' Oxfords and Pumps, in Patent Colt, Patent and Grey at.....\$2.98 | |

H. LASKEWITZ
OPEN EVENINGS
East Main Street MOUNT JOY, PA.
Ind. and Bell Telephones

Lancaster Grain and Feed Markets

Prices to Farmers

| | |
|-------------|-------------------|
| Wheat | \$1.15-1.25 bu. |
| Corn | 90c bu. |
| Rye | \$1.00 bu. |
| Hay (baled) | \$17.00-18.00 ton |
| Timothy | \$11.00-12.00 ton |
| Straw | |

Selling Price of Feeds

| | |
|---------------------|-------------------|
| Bran | \$42.00-43.00 ton |
| Shorts | \$42.00-43.00 ton |
| Middlings | \$44.00-45.00 ton |
| Linseed | \$50.00-51.00 ton |
| Gluten | \$48.00-49.00 ton |
| Ground Oats | \$42.00-43.00 ton |
| Hominy | \$42.-43.00 ton |
| Cottonseed 43% | \$58.00-59.00 ton |
| Dairy Feed, 15% | \$37.00-38.00 ton |
| Dairy Feed, 16 1/2% | \$39.00-40.00 ton |
| Dairy Feed, 20% | \$45.00-46.00 ton |
| Dairy Feed, 24% | \$52.00-53.00 ton |
| Dairy Feed, 25% | \$54.00-55.00 ton |
| Horse feed 85% | \$44.00-45.00 ton |

Markets dull. Beef steers compared with week ago, better grades steady, others weak, 25-35c lower. Top for week, \$10.00 Bulk of sales \$8.50-9.75. Compared with same week last year, top \$8.50, bulk \$7.25-8.25. Butcher bulls weak to 25c lower. Cows closed 25-10c lower, in-between grades off most, bulk of nearby cows \$4.00-5.50, few choice \$6.00. Calves closed steady, top vealers \$13.00. Hogs weak under light demand top \$8.50, bulk of sales around \$8.00.

Receipts for Saturday's market: 10 cars cattle from the following points: 7 Penna., 2 St. Louis, 1 Tenn. containing 272 head, 212 head driven from nearby farms. Total 484 cattle, 138 calves, 72 sheep, 30 hogs. Receipts for week ending June 2, 1923: 56 cars cattle containing 1304 head, 837 head driven in from nearby farms. Total: 2141 cattle, 353 calves, 228 sheep, 89 hogs.

Compared with same week last year: 78 cars cattle containing 1572 head, 1108 head driven in from nearby farms. Total: 2680 cattle, (including Show Cattle), 79 hogs, 33 calves, 35 sheep.

Range of Prices

STEERS:

| | |
|------------------|-------------|
| Good to choice | \$8.75-9.50 |
| Fair to good | \$8.25-8.75 |
| Medium to fair | \$7.25-8.25 |
| Common to medium | \$6.00-7.25 |

BULLS

| | |
|----------------|-------------|
| Good to choice | \$6.75-7.50 |
|----------------|-------------|