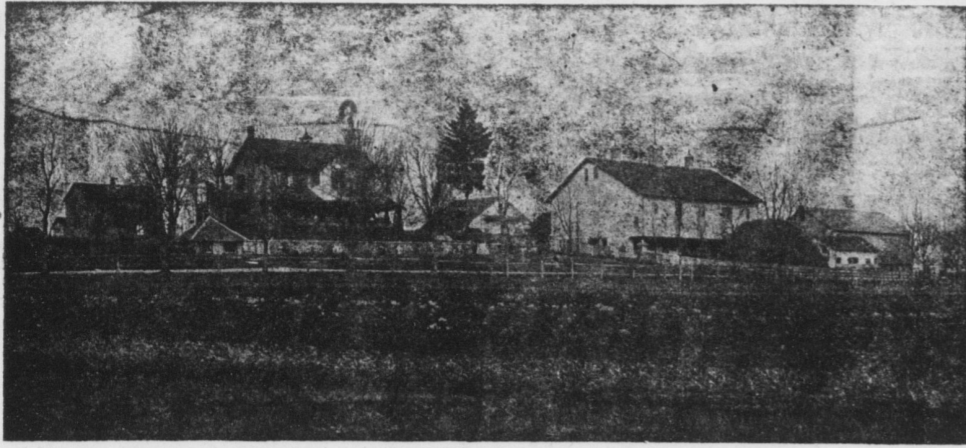


Schroll's Realty News



Large or Small Farms, Mansions, Business Places, Building Lots--Anything

I AM PLEASED TO INFORM PROSPECTIVE REALTY PURCHASERS THAT HERE IS A VERY GOOD LIST OF OFFERINGS, ALL PRICED TO SELL. I HAVE ANYTHING FROM A \$500 HOUSE TO A \$30,000 MANSION OR FROM A ONE ACRE TRUCK PATCH TO A 300 ACRE FARM.

YOU WILL FIND LISTED BELOW ALMOST ANYTHING YOU ARE LOOKING FOR AND IN CASE YOU DON'T SEE WHAT YOU WANT, PLEASE PHONE, CALL OR WRITE AND I'LL BE JOHNNY ON THE SPOT. YOU KNOW IT'S MY BUSINESS TO HELP YOU BUY OR SELL PROPERTY.

IF YOU WANT A POUND OF SUGAR YOU GO TO A GROCER; IF YOU WANT A NEW SUIT YOU GO TO A CLOTHIER, AND IN CASE YOU WANT TO BUY OR SELL A PROPERTY WHY NOT GO TO A REALTOR THAT WILL DEAL FAIR AND HONEST WITH YOU?

YOU ARE NOT UNDER OBLIGATIONS IF YOU COME TO ME. I WILL CHEERFULLY SHOW YOU ANY PROPERTY I HAVE AND REMEMBER THERE IS NO CHARGE. STOP AT MY OFFICE ANY TIME YOU ARE IN MOUNT JOY.



TRUCK FARMS

- No. 107—An 8 1/2 acre tract of land in East Donegal, near Reich's church, frame house, tobacco shed, barn, etc. \$4,000.00
- No. 183—2 acres land, rather rough, large double house, fine for poultry. \$250.
- No. 182—One acre, 7-room frame house, frame stable, fruit, good location in East Donegal. Price is \$1,800.
- No. 176—3 acres on concrete highway, near Florin, East Donegal twp., 8-room frame house, all conveniences, barn 40x40. Price right and half.
- No. 184—13 acres of sand and limestone in Rapho, frame house, good bank barn, fruit, running water. Only \$2,000.

MEDIUM SIZED FARMS

- No. 128—A 31-acre tract of gravel lot at Union Square, large house, lot of shedding for cattle, scales, etc., good well, also running water. Cheap.
- No. 178—A 30-acre farm in Rapho twp., near Manheim, good buildings, land very productive. Price interesting.
- No. 187—30-acre farm in Perry County, nice place, good buildings, would make a wonderful camp for hunters as it is right in the game district. Place is dirt cheap.
- No. 185—A 42-acre poultry and duck farm known as the Spring Lake Duck farm, in Cumberland county, bungalow, electric lights, etc.

LARGE FARMS

- No. 94—A 149 acre farm, iron stone soil, on Scriver pike, bank barn, 8-room house, shedding for 20 acres tobacco. \$90 per acre.
- No. 95—A 65 acre farm near Conewago Station, all farm land, running water, bank barn, brick house, etc., for \$6,000. Immediate possession.
- No. 102—An 86 acre farm in West Donegal, finest farm I ever offered, good buildings, on piked road, 4 acres timber ready to cut. No better farm in the county.
- No. 138—A 81-acre farm of all limestone soil in East Donegal, 9-room brick house, barn, tobacco shed for 9 acres, 10 acre meadow, % of money can remain.
- No. 148—A 114 acre farm near Sunnyside, 10 acres meadow, sand land, 2 frame houses, big barn, tobacco shed, etc., good reason for selling. Price right.
- No. 151—A 170 acre farm, 80 A. farm land, balance pasture, some timber; good buildings, 2 silos, shedding for 7 acres tobacco, a real farm.
- No. 154—183 acres, 120 farm land 31 acres timber, good buildings in-

cluding silo, possession any time; a large portion of money can remain.

No. 161—A 235 acre farm in Indiana Co., 175 acres farm land, balance timber, good buildings, young orchard, fine water and close to markets, schools and churches.

No. 161—The Clover Dale farm on state road 2 1/2 miles west of Elizabethtown, 95 acres, 15 acres meadow, brick house good barn, silo, etc., \$137 an acre.

No. 175—A 95-acre farm 2 1/2 miles from Elizabethtown on state road, brick house, good barn, silo, etc., 12 acres of good meadow.

No. 177—A 65-acre farm in Mt. Joy twp., buildings all new few years ago, all modern conveniences and \$15,000 can remain on 1st mortgage.

No. 189—70 acres along state highway near Elizabethtown, 20 acres pasture with running water, frame house, very modern barn, silo, tobacco shed, new hog pen, will sell with or without stock.

No. 181—92 acres, best of limestone land in East Donegal, meadow, spring water creek, good house with all conveniences, 2 tobacco sheds, abundance of fruit, one of the best farms I have listed.

No. 179—107 acres of limestone in East Donegal, new barn, brick house, meadow with spring water, 2 tobacco sheds, price very reasonable.

No. 175—A 95 acre farm 2 miles from Elizabethtown on the state road, frame barn, brick house, silo, meadow. \$135 an acre.

DWELLING HOUSES

No. 83—A frame house and business stand on E. Main st., Mt. Joy, a business center. All improvements.

No. 84—A frame house adjoining No. 83; fine shape, all improvements. Prefer to sell both.

No. 92—A 2 1/2 story frame house with slate roof on West Main street, Mount Joy. Only \$2,000.

No. 117—Lot 40x200 in Master-sonville with frame house, stable, butcher shop, etc. Must be sold quick.

No. 147—Acre of ground with 10-room brick house, good repair, steam heat, at railroad. Near Marietta.

No. 149—A beautiful 7-room and 2 1/2 brick bungalow in Marietta boro. Very modern, beautiful location and nice right.

No. 164—A large frame dwelling, barn, tobacco shed, etc. in Mt. Joy Boro. Just the thing for a retired farmer.

No. 168—Fine corner lot in residential section of Mt. Joy, 13-room brick house with all conveniences, gas, steam heat, electric light, bath, etc. A very good buy.

No. 186—An 8-room frame house, garage, steam heat, electric light, on West Main street, Mount Joy.

No. 190—A 2 1/2 story frame house with bath, steam heat, electric light, large frame stable, etc on Marietta street, Mount Joy. Price \$3,100.



J. E. Schroll, Mt. Joy

RELIGIOUS NEWS IN OUR CHURCHES

NEWS PERTAINING TO ALL THE CHURCHES IN MOUNT JOY BORO AND THE ENTIRE SURROUNDING COMMUNITY

Florin U. B. Church
Rev. M. H. Miller, Pastor
Sunday school at 9:30 a. m.
Christian Endeavor 7:00 P. M.
Sermon 7:30 P. M.

Eby's Church
Rev. M. H. Miller, Pastor
Services and Communion on Sunday morning at 9:45.

T. U. Evangelical Church
Rev. J. L. Ferguson, Pastor
Prayer meeting Wednesday at 7:30.
Bible School Sunday morning 9:30
Preaching Sunday morning 10:30.
K. L. C. E. Sunday evening 6:45.
Preaching Sunday evening 7:15
Come and Worship with us

St. Mark's United Brethren Church
H. S. Kiefer, Pastor
Sunday School at 9:00 A. M.
Morning worship and sermon at 10:15 A. M.
Preaching at 7:30 P. M.
A cordial welcome awaits you at all these services.

Methodist Episcopal Church.
Rev. Michael Farry Davis, Pastor.
9:15 Sunday School.
10:30 Divine Worship. Address by Mrs. Seymour Eaton, Corresponding and Field Secretary of the Woman's Home Missionary Society of the Philadelphia Conference.
7:30 Divine worship. Sermon by the Pastor, "Jesus, the Truth."

FORMER RESIDENT NOW IN DENVER

(Continued from page 1)

much rain, consequently everything has to grow under irrigation.

If it is not cool enough in this city and you want to get nearer the clouds, why all you have to do is to go down Seventeenth street to the Union depot and get on a train for the mountains and you can reach an altitude of over 14,000 feet above sea level and there you can make snow balls with the "summer's snow" and wear it overcoat in the "good old summer time." What do you think of that for a change in climate after riding in the cars for 30 or 40 miles from this city.

The Rocky mountains run thru the centre of the State from north to south and this city is only about six miles from the "foot-hills" and from the top of the Continental Divide as the main range is called here. Further south, it is called the Sangre de Cristo range, so you see one does not have to go far to get to the "Top O' the World" 4r from 10,000 to over 14,000 feet above sea level.

The other Sunday, I was on a one-day trip up Clear Creek canon to a small mining town called Silver Plume. I went over the Colorado Southern narrow gauge R. R. and I can say the scenery is something wonderful up through that canon.

We left the union depot in the morning in a train of open observation cars, toward the pine-covered gorge of the mountains, where nature seemingly has revealed in the delight of her own picturesqueness. It is sixteen miles to Golden, across a level stretch of country, which suggests some cozy valley in the far east comfortable farm houses, fields of waving grain, shady groves and running streams of water. Soon the "hog-backs" or "foot hills" are reached, in the midst of which is the town of Golden.

The altitude of Golden is over 5,000 ft. It was formerly the capital city of Colorado in the early days of this State. A plunge from here is made into the entrance of Clear Creek Canon, and for nearly 40 miles you follow this picturesque "suspensive trail."

There is nothing like Clear Creek Canon in America. It is no exaggeration to say that, for wild rugged scenery, nature in her most majestic mood failed to provide its equal; it cannot be described; words seem funny and inadequate. On this trip up the canon, you follow Clear Creek, a restless mountain stream rushing madly down a wild chasm; overhead a narrow line of blue sky; the grim walls of the canon close enough to touch at times as you fit by; the fantastic shapes carved upon the mountain, bold profiles and fairy castles; the tranquil summerland into which you occasionally dash when the canon winds into a few brief acres, green, shady, inviting; a passing glimpse of a dazzling snow-covered peak, far away in the upper ether—these, and more, one may see on this wonderful mountain excursion to the "Top o' the World" I might say.

Always climbing, climbing, the narrow gauge train wends its way over the serpentine trail, bringing in view, from time to time, special points of interest, such as the lion's head, a perfect formation seemingly chiseled by a sculptor; down among the rocks; the resting figure of a rhinoceros; the old roadmaster, who, even before one took the stage up Clear Creek, stood guard over the canon; the dark, towering form of Mt. Darter, hanging rock, a massive smoke-begrimed ledge, projecting entirely over the winding track; the much-talked-of Mother Grady which because of its "I-told-you-so" expression, is certainly properly named; Inspiration Point and the Lone Pine tree—these and many more are the delightful surprises in store.

Idaho Springs is the first town of importance reached on this excursion and no health resort in the world possesses finer climate. The Springs is

rapidly gaining much well-deserved prominence as a Spa, and will soon be known throughout the country because of its baths and wonderful mineral waters. They have a large new hotel there, that was recently completed, to take care of tourists and those that come for their health.

Georgetown nestles in a basin of the mountains with a narrow exit down the canon and an equally narrow inlet from above, green lake, one of the loveliest bodies of water in the Rockies, being within short distance. Near Green Lake is Highland Park, a favorite camping ground. When you reach Georgetown, one is of the opinion that the trip is certainly at an end, as the depot is at the base of the mountain, which necessitates the backing of the train out of the station before ascending the Georgetown Loop, that wonderful piece of engineering skill now world-known.

Passing over West-Clear Creek, with just a glimpse of the high bridge that spans Devil's Gate, you pass under a great viaduct, and rise and rise until you have left Georgetown hundreds of feet below and to the north, and with a sudden turn, the road is again seen, with the train now rushing toward the city and over the great high-bridge, completing the "Loop", and still climbing; down below the track just passed; away on the further side of the mountain; again crossing to the west-side, suddenly turning to the east, until the "Big Hill", about one hundred feet high—too sharp a curve for a bridge—has given another circle to the track; then, with a turn to the west, around the slope of Leavenworth Mountain, still another view of Georgetown with five tracks in view, each seeming to have no relation to its neighbor, until another valley in the mountain discloses the mining town of Silver Plume, named in honor of that great statesman, James G. Blaine, known as "The Plumed Knight".

The elevation of Silver Plume is nearly 10,000 feet above the sea, or nearly two miles higher than Mount Joy. Near here is Gray's Peak, towering 14,144 feet above sea level, or higher than Pike's Peak, near Colorado Springs and seventy miles south of Denver.

We arrived in Silver Plume about one o'clock, had an hour for dinner and then left for Denver and arrived here about 6 P. M. It took almost the whole morning to get to Silver Plume, as it is all up grade, but coming down to Denver we made better time, as the train did not have to do any pulling. I was on this same trip several years ago and at that time we had two hours at Silver Plume, so a party of us walked down along the mountain trail to Georgetown and there met the train. By trail the distance is only one and a half miles, but the way the railroad winds around through the gulch before reaching Silver Plume the distance must be at least five miles by rail, and as Silver Plume is over a thousand feet higher than Georgetown the railroad can only make the ascent by winding around in the gulch and crossing its own tracks by a high bridge and in that way gain the elevation of a thousand feet or more. This railroad hauls a great deal of ore to the smelters at Denver where gold, silver and other metals are extracted. This district is all mining and that is what the people depend on for a living. The altitude is too high to carry on farming as farm products will not grow here. I saw some small patches planted with garden truck near Georgetown, but the crops didn't look promising.

Not far from this city is Ester Park which can be reached in a few hours. It is located at the foot of grim, scarred Long's Peak. Here the Continental Divide, the main range of the Rockies, stretches out like a huge crooked arm. Within its circle nestles a natural amphitheatre of a hundred thousand acres. This is Ester Park, carpeted with thousands of acres of meadow land and walled in by fifteen snow-capped mountain peaks which rise sheer from three sides. This park is in the chain of Denver Mountain Parks and can be reached from this city by automobile or by rail. I was there last summer for a few days and I can say the trip was worth all it cost.

Not far from Golden, which is sixteen miles from this city, is Lookout Mountain and on the top of which is Buffalo Bill's grave. Last summer, on a Sunday, a friend and myself climbed to the summit. It was about three-quarters of a mile to the top and believe me, it was some climb, but what we saw was worth while. I see lots of fruit here on the fruit stands from the Grand Valley on the western slope of the mountain and it sure does look fine. All small fruit and garden truck is sold by the pound even potatoes, imagine yourself going into a grocery and asking for a pound of potatoes.

Melons and cantaloups from Rocky Ford are plenty. They even sell watermelons by the pound here. Last summer, I saw them quoted at three cents a pound and at the present time, they sell for half that. The inside of the Rocky Ford melons is a dark red and very sweet and the rind is thin and the cantaloups grown there, are something fine.

Well, I guess I'll bring this letter to a close and will write you soon again. Your friend,

S. A. Ricker

Spend Your Money

with your home merchants. They help pay the taxes, keep up the schools, build roads, and make this a community worth while. You will find the advertising of the best ones in this paper.

Advertise in the Mt. Joy Bulletin.



Dependable Foods

If there is one thing that stands out more than another as a distinctive feature of the American Stores organization, it is the dependability of our merchandise. At no season of the year more than now is the wisdom of shopping in an American Store to your advantage. Whether Butter, Eggs—whatever the perishable commodity—our rapid turnover, clean kept Stores and exacting care in selecting our merchandise insures for you the utmost in satisfaction. It came not by chance that our Stores are known as the Stores where "Quality counts and your money goes the farthest."

Big 10c Sale

A timely opportunity to demonstrate the purchasing power of your dollar on this list of seasonable needs. We mean what we say when we say—"Quality considered, your money goes farther in an American Store."

FINE TABLE SALT 3 Five cent bags for 10c

- Tender Lima Beans can
- Quality String Beans can
- Choice Succotash can
- Franco-American Spaghetti can
- Schimmel's Salad Dressing bot
- Heinz Kidney Beans can
- Stohrer's Chow Chow 6 oz bot
- Asco Bread Crumbs pkg
- Asco Cracker Meal pkg
- Gorton's Clam Chowder can
- Asco Pearl Tapioca pkg
- Asco Table Mustard jar
- Asco Pork and Beans can

10c

each

Reg. 12c can Best PINK SALMON cut to 10c

- Campbell's Soups can
- Lemon or Vanilla Extract bot
- Asco Ginger Ale bot
- Asco Root Beer bot
- Shaker Salt pkg
- Pure Fruit Mixtures doz
- Best Candles 3/4 lb
- Insectine can
- 2-in-1 Shoe Polish can
- Mason's Shoe Dressing bot
- Babbitt's Eye can
- Chloride of Lime big can
- Peroxide of Hydrogen bot
- Sticky Fly Paper 6 doub. sheets for

10c

each

ASCO SPICES 3 Five cent cans for 10c

- Rich Creamy Cheese 1b 25c
- Gold Seal Flour 12 lb bag 55c
- Asco Pure Grape Juice pt bot 20c

The kind you like. Always dependable. A nourishing beverage.

"Taste the Difference?"

Asco Coffee 1b 29c
Its rich, aroma and unusually delicious flavor will win your enthusiastic indorsement.

- ASCO Corn Flakes pkg 6c
- VICTOR Bread big loaf 6c

- Asco Teas 1 lb pkg 12c
- 1/2 lb pkg 23c; 1/4 lb pkg 45c

Asco Blend Teas are grown in the finest tea gardens of the world. A blend for every taste—Orange Pekoe, India Ceylon, Old Country Style, Black, Mixed.

- Mason's Quart Jars doz 87c
- Jar Rubbers (double lip) doz 7c
- Mason's Pint Jars doz 73c

Cake & Cracker Special

- N. Syph Sandwiches lb 30c
- B. Graham Crackers lb 16c
- C. Premium Soda Crackers pkg 5c
- Borden's Caramels 1/2 lb 12c
- Assorted Chocolates lb box 49c
- Asco Cream Mints lb 25c

MOUNT JOY, PENNA.

LET US CLEAN YOUR WHEAT

We are again prepared to clean your wheat. Our thorough method guarantees good clean wheat.

First, we put your wheat through a grader which takes out all the dirt and small grains.

Then it is run through a cockle machine thus removing all the cockle.

When put through this process, the result is clean wheat-guaranteed.

Bring your wheat in or consult us and see what we have to offer you.

G. MOYER, Mount Joy, Pa.

Last year we Cleaned over 3,000 bushels by this method

Get The Mount Joy "Bulletin" For All The Latest News