

condition of the  
st Co., Florin, Pa.

January 3rd, 1922

ASSETS	
From Banks and Bankers	\$ 17,184.63
Money loaned on notes	97,820.60
United States and State Bonds	23,077.50
Banking House and Lot	23,282.84
Other real estate owned	4,500.00
Furniture and fixtures	4,040.41
Miscellaneous assets	915.83
Cash on hand	9,846.46
	<b>\$180,668.27</b>
LIABILITIES	
Capital stock paid in	\$125,000.00
Net earnings to date	2,564.44
Deposits	53,103.83
	<b>\$180,668.27</b>

The above statement shows the standing of this bank after being in business less than eight months. We pay 4 per cent interest on Time Deposits and Savings Accounts. Bring us your business, we appreciate it and will take good care of it. Safe Deposit Boxes for rent in our modern, heavy steel protected vault. Your business solicited.

### Florin Trust Company

FLORIN, PENNA.

E. JAY NISSLY, Pres. N. F. ARNTZ, Treas.  
B. J. MYERS, Esq., Solicitor

**DIRECTORS**  
JACOB Y. KLINE AMOS W. MUMMAU  
PARIS G. SHELLY S. NISSLEY GINGRICH  
ALBERT G. WALTERS DANIEL M. WOLGEMUTH  
E. JAY NISSLY NORMAN F. ARNTZ  
EPHRAIM F. HEINER SAMUEL E. GARBER  
EZRA H. ENGLE HARRY LEEDOW  
JOHN L. GARBER AARON R. GIBBLE  
ARTHUR D. GARBER ANDREW S. BARD  
JOHN W. ESHLEMAN

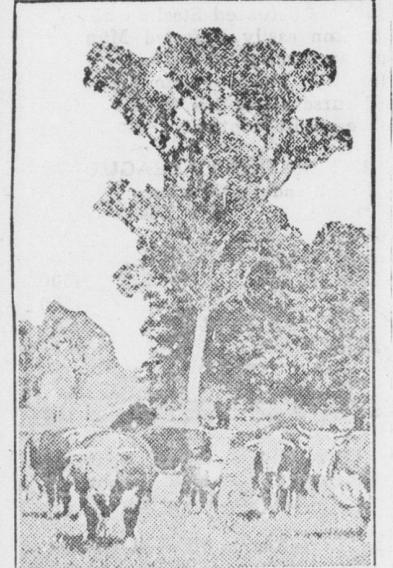
## MAKE MONEY IN PRODUCING BEEF

Herd of Good Cows and Purebred Sire of Prime Importance in Making Start.

### SELECT BEST HEIFER CALVES

No Method Adapted to All Farms and Conditions as Much Depends on Pasture Available and Nearness of Market. (Prepared by the United States Department of Agriculture.) We are a nation of meat eaters. The average American eats more than 140 pounds of this concentrated food each year. The importance of meat, particularly beef, is nowhere more emphatically brought out than at the great central stockyards, some of which cover nearly a square mile of ground. To keep the supply of animals moving through these yards, necessary to feed the millions of people, requires the raising of cattle, hogs, and sheep on hundreds of thousands of farms and ranches.

Improve Each Generation. In profitable beef production a herd of good cows and a good purebred bull are of great importance. Each



A High-Class Beef Breeding Herd.

generation of cattle raised should be better than the preceding one. This can be accomplished by selecting the best heifer calves each year to take the place of barren, shy-breeding, and old cows, and buying a better bull each two or three years. All other calves produced may be sold either as weanlings at six or eight months old, as stockers or feeders at one or two years, finished as baby beef at sixteen to twenty months, or as fat steers at an older age. The system employed depends largely upon the pasture and feed available, transportation costs, and the market price of milk and cattle.

The systems of handling beef-breeding herds which are most extensively practiced are "beef," "baby beef," and "dual-purpose." In the first two systems calves run with their dams until weaned, the cows not being milked. They differ in that cows intended for producing calves for baby beef generally receive better care because their calves are to be fattened shortly after weaning, which makes it necessary to give them a good start on milk. The straight beef system is primarily adapted to the range country of the West and South, which is too rough, dry, or sandy for cultivation. Where the climate permits, pasture is depended on the year round. Some cottonseed cake may be used during unusually bad weather or in times of feed shortage. Where snow covers the range a part of the year, hay is put up for winter feeding. Little grain is fed, except where grain sorghums can be grown. From southern ranges the cattle are usually sold as stockers at every age from weaning time to maturity. Recently many fat calves have been going to the slaughterhouses. From the North and West a large part of the cattle go to market grass-fat as three-year-olds.

Baby-beef production is a highly specialized business and is adapted to regions where there is a plentiful supply of fattening feeds together with good pasture for the summer maintenance of the breeding herd and nursing calves. The corn belt is the best place for this system, but it is practiced to some extent in other places.

When to Finish Baby Beef. If spring calves are to be finished as baby beefs, they should be taught to eat grain before they are weaned. They should go into the dry lot at the end of the pasture season and be ready for market by June or July. If possible, they should have good pasture for a couple of weeks after weaning. Fall-born calves should be kept on grain when they are turned on pasture in the spring. The quantity of grain should be gradually increased throughout the summer and fall so that they will be finished for market in December or January. When the pasture fails, hay and silage should be supplied.

Stocker calves require some meal or grain during their first winter to keep them thrifty and growing. They can utilize to advantage much more roughage, such as stalk fields, meadows, silage, and straw than baby beefs. As yearlings and two-year-olds they may be wintered on roughage alone, some clover or alfalfa hay being given if available.

Who Wants This Chance? I have a 114-acre farm near Sunnyside, 10 acres of meadow, sand land, 2 frame houses, big barn, tobacco shed and cellar. Price \$118.00 per acre. Act quick if you can use it. Call, phone or write Jno. E. Schroll, Reator, Mt. Joy, Pa.

It Will Pay You. The large circulation of the Bulletin makes it the best advertising medium in this section of Lancaster county. Give it a trial and be convinced.

## MONTHS OF SUFFERING

How a Baltimore Girl Recovered Her Health

Baltimore, Maryland.—"For several months I suffered with severe backache and general weakness. I could not sleep comfortably at night. I remained in my bed for some time. I found your book at some one day and after reading it began at once to take Lydia E. Pinkham's Vegetable Compound. I have had very good results and one of my girl friends are taking it now. You may use this letter to help other girls, as the letters in your book helped me." — ROSE WADNER, 3013 Roseland Place, Baltimore, Md.

That is the thought often expressed in letters recommending Lydia E. Pinkham's Vegetable Compound. These women know what they have suffered, they describe their symptoms and state how they were finally made well. Just plain statements, but they want other women to be helped.

Lydia E. Pinkham's Vegetable Compound is a medicine made from medicinal roots and herbs, and without drugs to relieve the sickness women so often have, which is indicated by backache, weak feelings, nervousness, and no ambition to get anything done or to go anywhere. It has helped many women. Why not try it?

### BELL CO. ASKS PATRONS TO BUY ITS STOCK

F. E. Cowan, the local manager of the Bell Telephone Company, of Pennsylvania, is sending out personal letters to telephone subscribers in his district urging their purchase of the shares of the American Telephone and Telegraph Company. This move is in line with the best thought of the times. It is becoming more and more evident every day to thoughtful people that it is very desirable that the users of public utilities' services should be interested as investors in the companies that render the service. A widespread ownership of this sort in the communities served leads to a sympathetic understanding on the part of the users of such service of the problems and difficulties with which the utilities companies are confronted from time to time, resulting in more cordial relations between the purveyors of the service and their patrons.

Another advantage that grows out of wide distribution of stock holding is that the financing of the growth of the properties, so important to the communities, is made easier by more persons contributing to the necessary increases in capital from time to time.

Probably the strongest argument of all, however, lies in the great desirability of the profit from conducting the public utilities' service in the community, remaining in that community for the benefit of its own citizens instead of being taken away from the community for the benefit of stockholders located in other parts of the country.

Read the ad of the Bell Telephone Company on another page of this issue.

### AVOID DISAGREEABLE SMELLS

Unless scrupulous care is taken Unpleasant Odors Are Likely to Hurt Products.

In winter smells are apt to find their way to milk and butter quite as readily as in summer. Now these products must be kept in the house, and some artificial heat must be used to keep them from freezing. This close confinement is very apt to bring an unpleasant smell or taste to milk and butter unless the most scrupulous care is taken. Milk ought never to be kept anywhere near the kitchen. If it is, some bad smells will surely be imparted to the milk and cream.

### CHARCOAL GOOD PREVENTIVE

Has Great Purifying Effect in Absorbing Noxious Gases—Aids Digestive Disorders.

The value of charcoal can scarcely be over-emphasized, and it should be fed to fowls of all ages as a preventive of bowel disorders and disease. It is best to keep it before the fowls at all times, as there is no danger of their eating too much. Charcoal has a great purifying effect in absorbing noxious gases, and will correct many digestive disorders.

### GOOD DAIRYMAN IS DEFINED

Among Other Things He Should Meet and Know Other Men Who Can Handle Cows.

To be a good dairyman you must meet and know other dairymen who know how to handle cows. Read the agricultural papers, and the paper devoted to your breed. Be familiar with the weak and strong points of each animal in the herd and strive to prevent a recurrence of the weak points in the offspring by skillful mating.

### A Good Truck Farm.

I have a 4 1/2-acre truck farm close to markets, best limestone land, 9-room brick house with bath, slate roof; frame barn with slate roof, tobacco shed, ice house, chicken house and hog pen, fruit wonderful garden. Property is located on a pike. Will sell for less than it would cost to build a house like the one on the premises. Act quick if you want it. J. E. Schroll, Reator, Mt. Joy, Pa.

Marriage Licenses Jacob G. Lehman and Lillie E. Breneman, both of Rapho township. Subscribe for the Mt. Joy Bulletin Advertise in the Mt. Joy Bulletin.



## You Can't Afford to Miss Any of These Bargains

Check every item in this advertisement and then think it over. If you are not now an AMERICAN STORES CUSTOMER you will be amazed at the big savings. Prove to yourself it pays to deal at an "Asco" Store, where quality counts and your dollars go the farthest.

MOUNT JOY, PENNA.

Regular 7c Quality Blue Rose RICE lb 5c  
Whole grain. Here's a bargain don't miss it. You should buy a liberal supply at this extremely low price. SPECIAL FOR THIS WEEK ONLY.

REG. 21c N. B. C. 18c GOLD SEAL OATS 8c TENDER PEAS 12 1/2c  
B. G. CRISP Pound Package The best white oats grown. Fine flavor. Big value.

Special Combination for This Week Only  
Buckwheat-Pancake Flour-Golden Syrup 3 for 25c  
Sold separately or assorted any way you wish. This is another opportunity to save more money.

Regular 31c N. B. C. 29c QUALITY COUNTS  
Marshmallow Creams Delicous is the word. Cornstarch . . . . .pkg. .7c  
Cocoa . . . . .1/2 lb can 15c  
Noodles . . . . .pkg. .5c  
Evaporated Milk . . . . .can 10c  
Peanut Butter . . . . .lb 15c

"ASCO" PORK AND BEANS 25c MINCED CORNED BEEF 8c  
Three Cans for Pound Can  
Selected beans, cooked with pork and packed in a spicy tomato sauce dressing. Cooked with potatoes. Just heat and serve. Mighty nice served with poached eggs on toast. Get your share of this bargain.

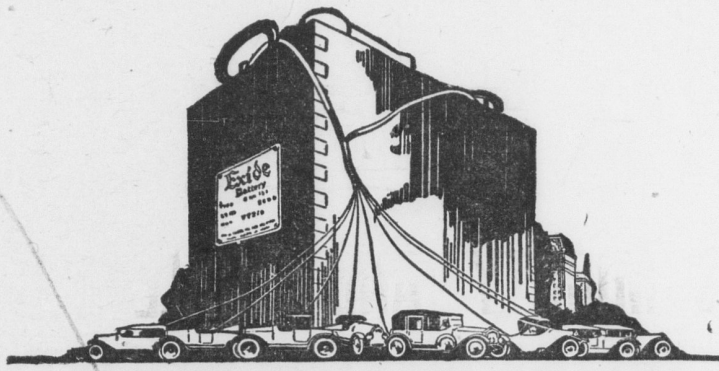
Makes the Best Cup You Ever Drink  
"ASCO" COFFEE lb 25c  
BECAUSE of its delightful aroma and rich, rare flavor "ASCO" BLEND is the CHOICE of thousands and thousands of the most discriminating coffee drinkers. Think of it—millions of pounds sold yearly. There is only one answer—QUALITY. A TRIAL POUND WILL MAKE YOU AN "ASCO" REGULAR.

QUALITY FRUITS VICTOR BREAD, BIG LOAF, 6c  
Oregon Plums . . . . .big can 25c  
Hawaiian Pineapple . . . . .med. can 22c  
Sliced Peaches . . . . .tall can 16c  
California Peaches . . . . .big can 23c, 29c  
Fancy Evaporated Peaches . . . . .lb 19c  
Fresh from our own ovens. The biggest bread value sold today. There's health in every crumb.

REGULAR 20c CAN COLBURN'S MUSTARD 17c  
Special price for this week only. Fancy Norway 7 & 15c MACKEREL each  
Five quality blends, and every one a winner—Plain Black, Mixed, Old Country Style, Orange Pee, India Ceylon. The finest Norway mackerel to be had.

## Today—Try a Pound of the Delicious Louella Butter Known as the Finest Butter in America

RICH CREAMY CHEES' pound 23c  
Cool and snappy—just the kind you like. QUALITY VEGETABLES  
Sweet Sugar Corn . . . . .can 10c  
"Asco" Maine Corn . . . . .can 15c  
"Asco" Sifted Peas . . . . .can 19c  
"Asco" Asparagus . . . . .can 20c  
Garden Spinach . . . . .big can 20c



## Reduction in Prices

A substantial reduction in the price of EXIDE BATTERIES for automobile starting and lighting is announced.

In making this announcement, we wish to state emphatically that none of the well-known qualities which have always characterized Exide Batteries will be sacrificed to make this reduction possible.

The same material and the same high-grade workmanship which you have always associated with Exide Batteries will continue to feature their construction.

Let us install in your car the Exide that is best suited to its requirements. Let us explain its lasting power and carefree service.

# Exide BATTERIES

## E. B. ROHRER

Bell and Ind. Telephones Mount Joy, Penna.

## FARMER'S Grocery Department

- Special bargain while they last—1000 lbs WHITE MARROW BEANS 2 lbs for . . . . .11c
- GINGER SNAPS pe lb . . . . . 12c  
KARO SYRUP per can . . . . . 10c  
EVAPORATED MILK per can . . . . .10c  
NICE MEATY PRUNES per lb . . . . .10c  
SHREADED WHEAT per pkg . . . . .12 1/2c  
POAST TOASTIES 3 pkgs. for . . . . .25c  
KELLOGG'S CORN FLAKES 3 pkgs . . . . . 25c  
SOAP CHIPS 2 lbs. for . . . . .25c  
LARGE CAN OF FINE PEACHES 4 cans. \$1.00  
CALIFORNIA EVAP. PEACHES lb . . . . . 18c  
CALIFORNIA LIMA BEANS lb . . . . . 10c  
ELIZABETHTOWN CREAMERY BUTTER lb .47c  
SWIFT'S PRIDE SOAP 6 pieces for . . . . .25c

F. A. Farmer

East Main Street, MOUNT JOY, PA.

## GOOD FURNITURE

Is the only kind I sell—Furniture that is Furniture

Rockers, Mirrors, Hall Racks, Picture Frames, Ladies' Desks, Extension and Other Tables, Davenports, China Cabinets, Kitchen Cabinets.

In Fact Anything in the Furniture Line

UNDERTAKING AND EMBALMING

H. C. BRUNNER MOUNT JOY, PA.