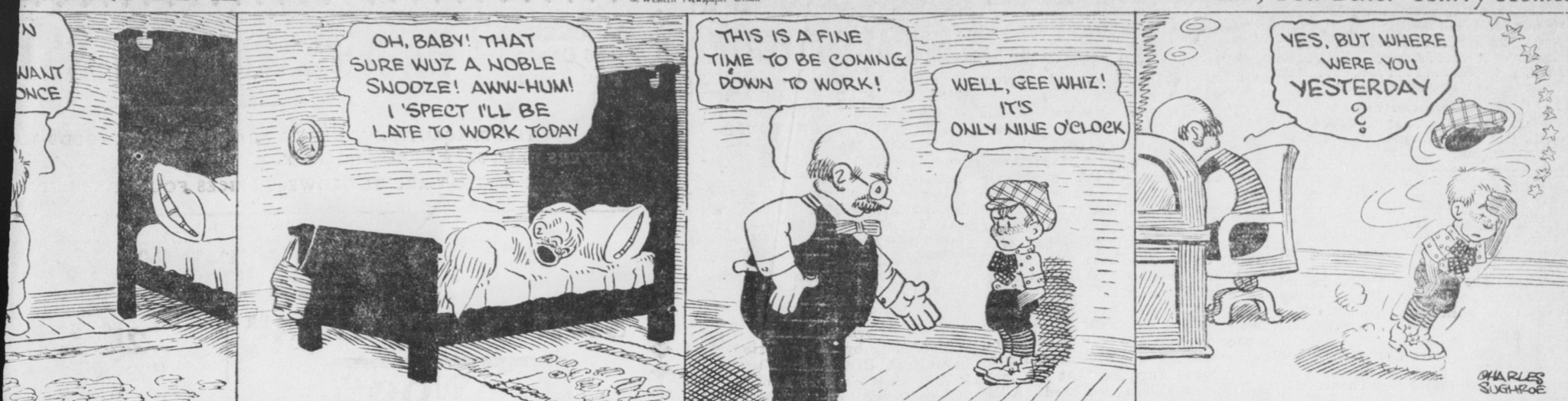


WINTER'S DEVIL

By Charles Sughroe
© Western Newspaper Union

Maw, You Better Hurry Home!



THE PRODUCE AND LIVE STOCK MARKET

CORRECT INFORMATION FURNISHED WEEKLY BY THE PENNA. BUREAU OF MARKETS FOR THE BULLETIN

Herewith is a corrected weekly report of the Lancaster markets relative to produce and live stock:

Lancaster Retail Produce Market
All the markets were well stocked with choice offerings and with a good attendance of buyers an active trading was done. Nearby commodities are increasing in supply and find ready sale. Offerings of apples were moderate and sold higher. All other fruits and vegetables show practically no change in price.

Prices to Consumer
Asparagus: Good supply, mostly home grown 10a15c bunch.
Beets: Home grown, good quality and condition, fair supply 5c bunch, new stock 10c bunch.
Beans: New green fair supply 20a-25c 1/4 peck. Yellow Wax 25c 1/4 peck.
Cabbage: Home grown, liberal supply, quality and condition good. Old stock 5a10c head. New stock, Flat-pointed type 10a20c head.
Cauliflower: Calif. supply good, fair quality 15a30c head.
Carrots: Good supply and condition 10c box; new 10c bunch.
Celery: Fla. fair supply, good quality 10a20c stalk.
Cucumbers: Southern, fair supply 5a10a15c each.
Lettuce: Home grown, long leaf, good supply and condition 5a10a15c head. Endive 5a10c head. Head lettuce 10a20c. Calif. Iceberg 15a30c.

Onions: Yellow Bermuda, condition variable 5c box; 10c 1/4 peck; 1/2 basket 50c. Scallions 5c bunch. New stock, Texas whites and yellow 6c lb.
Parsnips: Fair supply, good quality 8c qt. box; 15c 1/4 peck.
Parsley: Home grown, good quality and condition 2a5c bunch.
Peas: Good quality 3a5c each.
Peas: New, Fla., fair supply 20c qt. box.
Poke: 5c bunch.
Potatoes: Irish Cobbler, supply good, quality and condition good \$1 10c 1/4 peck 50c bushel, No. 2 40c bushel. New stock 15a25c 1/4 peck.
Pumpkins: Crook necks 6a15c ea.
Radishes: Home grown, good supply and condition 10c box; 5a10c bunch.
Rhubarb: Fair supply 5a10c bunch.
Spinach: Good supply and condition 25a30c 1/2 peck.
Sweet Potatoes: Good supply and condition 30a40c 1/2 peck.
Tomatoes: Fla., fair supply, good quality 20a25c box.
Turnips: Supply fair 20c 1/4 peck.

Fruits
Apples: Home grown, liberal supply, quality and condition good. Winesaps fancy 40a50c 1/2 peck, \$2.00 bushel. York Imperials 30a40c 1/2 peck, \$1.75 bushel. Baldwins 30a-40c 1/2 peck, \$2.00 bushel. Other varieties 30c 1/2 peck.
Bananas: Supply good, quality and condition good 25a40c doz.
Grape Fruit: Fla., good supply 10a15c each.
Lemons: Good supply, fair quality and condition 25a30c doz.
Oranges: Fla., supply good, quality and condition good 25a50c doz., Cal., 25a50c doz.
Pineapples: Porto Rico, good quality, fair supply 20a35c each.
Strawberries: Fla., choice, fair supply 20c pint; 40c qt.
Butter: Country 50a55c lb. Creamery 55a60c lb.
Eggs: Nearby 28a30c doz., mostly 30c. Storage 27c doz.
Poultry: Dressed chickens \$1.50a-\$2.25 each; Pheas \$1.25a\$1.50 each; Squabs 40a50c each.

Lancaster Grain and Feed Market
Prices Paid to Farmers
Wheat milling \$1.30 bushel, Wheat Chicken \$1.20 bushel, Corn 73c bushel, Rye, 90c bushel, hay (baled) Timothy \$15a\$17 ton, Mixed \$13a-\$15 ton.
Selling Price of Feeds
Bran \$31a\$32 ton, Shorts \$30a-\$31 ton, Middlings \$36a\$37 ton, Linseed Meal \$43-\$44 ton, Cottonseed Meal 36% \$43a\$44 ton, Cottonseed Meal 43% \$46a\$47 ton, Dairy Feed 15% Protein \$31a\$32 ton, Dairy Feed 16 1/2% Protein \$33a\$34 ton, Dairy Feed 20% Protein \$39a-\$40 ton, Dairy Feed 24% Protein \$43a\$44 ton, Dairy Feed 25% Protein \$45a\$47 ton.

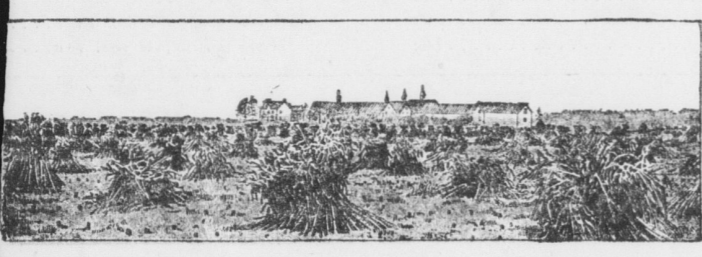
Two Good Farms
I have two exceptionally good tobacco farms in East Donegal that I can sell right. They contain 81 and 89 acres. The largest can be bought for only \$150 per acre. Three-fourths of the money can remain on mortgage. Both these farms are close to markets and are money makers. J. E. Schroll, Mt. Joy.

Rural Bargains

IN

Real Estate

In the past few days I have listed some "bargains" in rural real estate, and when I say bargains I mean it.



Here You Are

100-acre farm, 50 acres tillable and 20 acres pasture, on state high-lying Elizabethtown bor., good house, newly remodeled and modern barn for 45 head of stock, water in every stall, concrete entries, new silo containing nearly \$1,000 worth of feed, new hog sty, shedding for tobacco, wagon shed, large poultry house, slate roofs on nearly all buildings, good water.

THINK OF THIS
In addition to the farm here's what goes with it. Four Head of Horses, from 4 to 8 yrs old. 12 Head of Cows, some registered, 5 Chester White Sows, some with pigs, 1 Bear, 200 Chickens, about 40 Ducks. A large and complete line of farm implements, including 4 wagons, reaper, tobacco planter, harrows, plows, in fact everything. 9,000 tobacco leaf, half of 7 acres of tobacco, all hay, straw, fodder, half of corn, all wheat in ground, etc. Place will bear closest inspection. If interested get busy as this proposition can't last long.

WATCH THIS LIST WEEKLY IF YOU ARE INTERESTED IN REAL ESTATE. I CAN SUPPLY YOUR WANTS

BUSINESS STANDS
No. 63—The entire concrete block manufacturing plant of J. Y. Kline at Florin, together with all stock, machinery, buildings, contracts, etc. Price very low.
No. 160—A very good business proposition in Mount Joy including several houses on Main street. Price will astonish you.

DWELLING HOUSES
No. 81—A 3-story brick mansion in Maytown, excellent location, has all improvements—a neat home. Has large store room and would be fine for business and dwelling combined.
No. 83—A frame house and business stand on E. Main st., Mt. Joy, in business center. All improvements.
No. 84—A frame house adjoining No. 83; fine shape, all improvements. Prefer to sell both.
No. 92—A 2 1/2-story frame house on West Main St., Mt. Joy. Price \$2,000.
No. 117—Lot 40x200 in Master-wood with frame house, stable, shop, etc. Must be sold.

LARGE FARMS
No. 42—An 85-acre tract of farm timber and pasture land in West Donegal township, tract adjoins Masonic Homes ground on two sides. Price very low.
No. 94—A 149 acre farm, iron stone soil, on Sceravel pike, bank barn, 8-room house, shedding for 20 acres tobacco. \$90 per acre.
No. 95—A 65 acre farm near Conewago Station, all farm land, running water, bank barn, brick house, etc. for \$5,000. Immediate possession.
No. 102—An 85 acre farm in West Donegal, finest farm I ever offered, good buildings, on piked road, 4 acres timber ready to cut. No better farm in the county.
No. 128—A 31-acre tract of gravel land at Union Square, large house, lot of shedding for cattle, scales, etc., good well, also running water. Cheap.

FACTORY SITES
No. 10—A tract fronting 107 ft. on the P. R. E. siding in Mount Joy has many advantages and centrally located. One of the best in the town. I also have a number of properties that owners do not care to have advertised. If you don't find what you want in this list, call and see me. I have it.
Also many Lebanon Co. farms from 40 to 200 acres at \$4,000 to \$22,000.00.
CALL, PHONE OR WRITE
Jno. E. Schroll
Mt. Joy, Pa.

Why Not Use The Best ?

Martin's Sanitary Dairy
West Donegal St. MOUNT JOY, PA.

Krall's Meat Market
I always have on hand anything in the line of
SMOKED MEATS, HAM, BOLOGNA DRIED BEEF, LARD, ETC.
Also Fresh Beef, Veal, Pork, Mutton
H. H. KRALL
West Main St. MOUNT JOY, PA.

Shaving Hair Cutting
Jos. B. Hershey
TONSORIAL PARLOR
Agent for the Manhattan Laundry Goods called for Monday.
East Main Street, Mount Joy

THE Wingert & Haas Hat Store
The largest line of Spring Hats Caps and Gloves
144 N. Queen St. Lancaster, Pa.
JOHN A. HAAS, Propr.

J. D. Easton
USED & ANTIQUE FURNITURE BOUGHT AND SOLD
If you have anything you want to sell, phone or drop me a card. If you do not care to make sale, I will buy your entire equipment. I buy for cash.
INSURANCE
S. HESS HERSHEY
212 South Market Street
Bell Phone 75R2 Mt. Joy, Pa.

Don. W. Gorrecht
37 WEST MAIN STREET
Jeweler
Watchmaker--Engraver

WHY PAY \$5 to \$6
To have the carbon cleaned and valves ground in of your Ford.
P. S. Brubaker
will do it for \$2.50

PAINTING AUTOS FROM \$25 UP RETOPPING FROM \$15 UP REPAIRING 50c PER HOUR
P. S. BRUBAKER
MOUNT JOY, PA.

Weds at 15, Rich Girl Wins Annulment



Mrs. Lena Simon Collins, (left) who aided by the testimony of her sister, obtained an annulment of her marriage in the N. Y. Supreme Court to Arthur B. Collins on the ground that she was only 15 years old at the time of the wedding, July 9, 1918. The girls are daughters of August Simon, a wealthy realty man of Oil City, Pa.

JUDICIOUS CULTIVATION OF CORN PROMOTES GROWTH AND YIELD
From the time of germination to maturity corn should be given every opportunity to make a steady, sound growth. If the development of the plants is checked from any cause it may reduce the yield no matter how favorable the latter treatment. The most successful corn growers realize the importance of thorough, early cultivation in order to prevent any check in the growth of the plants because of weeds or crusted soil. As a consequence of heavy rainfall, the stalks may increase rapidly in height and at the same time, for lack of cultivation or of soil fertility, or for other reason, they may be slender, too tender or of poor color. Thrifty corn plants are thick, strong, and of dark green color.

The Pennsy paid Lancaster City \$4,354 for a fire engine it demolished recently.



Better Meals and On Time
YOU don't have to cook the same round of dishes over and over to have meals on time. The Florence Oil Cook Stove will lift you out of your cooking rut. Because—the Florence needs little attention, is easy to regulate, and gives such dependable results. You are sure the meal will be ready on time—no matter what you cook. Burns kerosene.
Come into our store and learn more about the Florence.

FLORENCE OIL COOK STOVES
BROWN BROTHERS
Mount Joy, Pa.

ARE YOU GUILTY?
A FARMER carrying an express package from a big mail-order house was accused by a local dealer.
"Why didn't you buy that bill of goods from me? I could have saved you the express, and besides you would have been patronizing a home store, which helps pay the taxes and builds up this locality."
The farmer looked at the merchant a moment and then said:
"If you don't patronize your home paper and advertise, I read it and didn't know that you had the stuff I have here."
MORAL—ADVERTISE