

# AMERICAN STORES CO.

JUST AS THE PIPE LINE REVOLUTIONIZED THE OIL industry carrying the products of the great oil wells immense distances, thus cutting down overhead by eliminating the necessity of tank cars and locomotives, so every American Store forms a link in the chain that connects you directly with the Producer.

**OUR VERY BEST FLOUR, 12-lb. bag . . . . . 85c**  
Your choice of any brand in stock.

**OUR VERY BEST TEAS, lb. . . . . 45c**  
12c 1/4 lb. pkg.—23c 1/2 lb. pkg.  
The very finest quality to be had. **FOUR BLEND S—ONE QUALITY**—Plain Black, Mixed, Old Country Style of India and Ceylon.

**OUR VERY BEST COFFEE, lb. . . . . 42c**  
Why not buy and drink the BEST to be had. **THE BIGGEST VALUE SOLD TODAY.** One SIP and you will say it's the "Best cup you ever drank."

**SNOWDRIFT, 1-lb. can . . . . . 32c**  
Pure vegetable shortening. Try a can today. Splendid for FRYING, COOKING and making all kinds of PASTRY.

**ECONOMY POINTERS**  
Table Salt, pkg., 4- . . . . 4c  
"Asco" Table Syrup, can, 13c  
Best Barley, lb., . . . . . 6c  
Pure Jelly, glass, . . . . . 10c  
White Distilled Vinegar, Bottle, 12c  
Hershey's Cocoa, can, 9c, 7c  
Uneda Biscuit, pkg., . . . . . 12c  
N. B. C. Butter Thins, pkg, 15c  
Quaker Corn Flakes, pkg., 9c  
"Asco" Macaroni, pkg., . . . . . 10c  
Heinz Baked Beans, can, 12c, 17c  
Choice Broken Rice, lb., . . . . 10c

**"ASCO" ROLLED OATS, pkg. . . . . 10c**  
Straight white oats, the best grown. Packed in sanitary packages. Prepared so that very little cooking is required.

**CHOICE MACKEREL, each . . . . . 23c**  
FINE, BIG, WHITE FAT FISH. May we suggest a well cooked mackerel for your breakfast tomorrow?

**CHUM LIGHT PINK SALMON, tall can . . . . . 19c**  
Very fine quality. An economical dish. Splendid for Salads, Croquettes, etc.

"Asco" Baking Powder, can, 5c, 9c  
Best White Beans, lb., . . . . 9c  
Fine Sugar Corn, can, 14c, 18c  
California Lima Beans, lb., 15c  
Choice String Beans, can, 12 1/2c  
Best Dried Green Peas, lb., 10c

**HIGH GRADE LAUNDRY SOAP, big cake . . . . . 5c**  
Good for all general household purposes. Buy a dozen cakes at this price.

**CHOICE QUALITY PEAS, can . . . . . 14c**  
Exceptionally fine quality. At this low price we would suggest buy a dozen or a case for next winter.

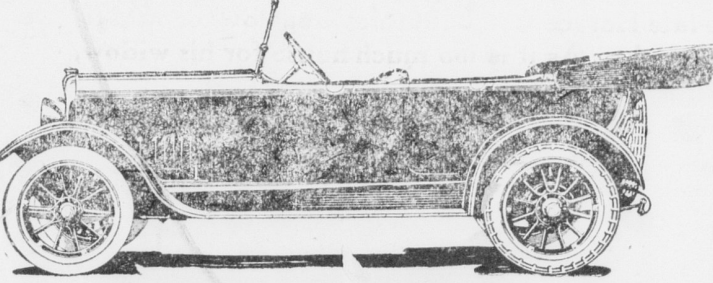
**BEST SLOW CORN MEAL, lb. . . . . 5 1/2c**  
Very best to be had—just the kind for cornmeal muffins.

**HIGH GRADE PORK & BEANS, big can . . . . . 12 1/2c**  
8 Cans, \$1.00  
Quality A-1 Cooked ready to serve and packed in a delicious tomato sauce dressing. Buy them by the quantity.

**MAKE OYSTERS TASTE BETTER**  
Oysterettes, pkg., . . . . . 7c  
Best Trenton Crackers, lb. 18c  
Ritter's Catsup, bottle, . . . . 12c  
Sour Pickles, big bottle, . . . . 14c  
India Relish, bottle, . . . . . 12c  
Fresh Cracker Dust, lb., . . . . 3c

**SAVES TIME, MONEY AND LABOR**  
Pat-a-Cake Flour, pkg., . . . . 22c  
Zatek Cake Icng, pkg., . . . . 19c  
Try them both—satisfaction guaranteed.  
Washing Soda, lb., . . . . . 3c  
Tomato Puree, can, . . . . . 8c

## Velie "Six" & Velie Trucks



The Final Choice of Motoring Men



"BELL FOUR"  
Made in York, Pa.

## APPERSON "8"

A. ZAEFEL & SON  
Distributors for Lancaster County  
Schlotzhauser Community Garage,  
414 GREEN STREET LANCASTER, PA.



**DO YOU SURELY NEED**  
Have a Healthy Color indicates Iron in the Blood. Pale or colorless face, a condition helped by CARTER'S IRON PILLS.

## WILSON INVADERS HOUSE OF FOES

CARRIES HIS BATTLE FOR LEAGUE OF NATIONS INTO HOME OF HIS ENEMIES.

**GIVES COST OF GREAT WAR**  
Informs Them of Lives and Treasure Poured Out to Save Civilization.

(By Mt. Clemens News Bureau)

Aboard President Wilson's Special train—Carrying his war against those who oppose the adoption by the United States of the peace treaty and the covenant of the League of Nations into their households, President Wilson last week invaded California.

And there, where the question on which league opponents have hammered the hardest, that of Shan Tung—his of most interest, the president found the same enthusiasm among the people for peace and for insurance against future wars. The people want the long controversy ended. They war this country to be able to again turn its undivided attention to social, economic and industrial development.

Their leaders may not feel this way, but judging from the expressions which met the president on every side. The leaders have overstepped the limits of the peoples patience in their stubborn determination to force a change in the great document.

**Must Take This League.**

"We must take this League of Nations," said the president, "for there is no way in which another can be obtained without compelling reconsideration by the powers. And it would set very ill upon my stomach to take it back to Germany for consideration."

"All over the world people are looking to us with confidence our rivals along with the weaker nations. I pray God that the gentlemen who are delaying this thing may presently see it in a different light."

Germany, the president declared, is taking new courage from our delay in ratifying the treaty and her newspapers and public men were again becoming arrogantly outspoken.

Deeply impressed were the figures of the cost of the late war, in lives and dollars. It was the first time that the official statistics have been made public and the tremendous totals shocked the president's audience.

**Shows Cost of World War.**  
"The war," said President Wilson, cost Great Britain and her Dominions \$38,000,000,000; France \$25,000,000,000; the United States \$22,000,000,000; Russia \$18,000,000,000; Italy \$13,000,000,000 and a total, including the expenditures of Japan, Belgium and other small countries, of \$123,000,000,000.

"It cost the Central Powers as follows: Germany \$39,000,000,000; Austria-Hungary, \$21,000,000,000; Turkey and Bulgaria \$3,000,000,000.

"The United States," the president said, "spent one million dollars an hour night and day for two years in its struggle to save civilization. All this, however, fades into insignificance when the deaths by battle are considered," declared the president. Russia gave 1,700,000 men; Germany 1,600,000; France 1,380,000; Great Britain 900,000; Italy 364,000; the United States 50,300. In all, almost 7,500,000 men perished in the great struggle, or 1,500,000 more men than died in all of the wars of the previous 100 years.

**Should Remember Recent Horrors.**  
"These are terrible facts, and we ought never to forget them. We went into this war to do a thing that was fundamental for the world and what I have come out on this journey for is to determine whether the country has forgotten or not. I have found out. The league has not forgotten and it will never permit any who stands in the way of the fulfillment of our great pledges, ever to forget the sorrowful day he made the attempt."

Arbitration and discussion, the president pointed out, must replace force of arms in the settlement of world controversies. Constantly he dwells upon the fact that all the nations in the League agree to do one of two things, first to submit their differences to arbitration, in which case they agree to abide by the decision rendered, or, if unwilling to arbitrate, to have their case discussed by the Council of the League, in which case six months is granted for discussion. Three months must elapse following the result of this last step in arbitration before the nation concerned can declare war.

**Holds Out Hope for Ireland.**  
The president took advantage of questions propounded by the San Francisco Labor Council to give the inference that he believes Ireland can bring her case before the League of Nations for settlement when the League is actually in existence.

Shan Tung, he declared, will be returned to China. Japan, he said, had given her solemn pledge to that effect. And with the League of Nations in force, said the president, we can, if occasion arises, stand forth and say, "This shall be done."

**Now Get Busy**  
On account of advanced years of the owner, who wants to be relieved of responsibility, I have five dwellings and a lot adjoining on North Barbara street, Mt. Joy, known as Sherk's Row, for sale. The price is right as I can show you a ten per cent. investment. Who wants it? Greater portion of money can remain in J. E. Schroll, Mt. Joy, Pa.

**Here's a Good Buy**  
The lot with two properties on E. Main street, of the estate of the late B. S. Dillinger. One house has all conveniences.  
Now don't delay but see me at once Jno. E. Schroll, Mt. Joy, Pa.

## EVERYTHING IN COMPLETE READINESS FOR LANCS. GREATEST FAIR

The stage is set, the vast audience is waiting and in a few days the curtain will rise on what promises to be the greatest fair given to Lancaster. The grounds have been given their final grooming, and as this is printed exhibits are being placed.

In the matter of amusements the fair officials have outdone themselves this year. Polack Bros., 20 Carnival shows will there complete and will occupy the midway—a quarter of a mile of headlines—something for everybody, nothing to offend. Seven of the country's greatest acts have been secured as free attractions in front of the grandstand. Not the least among them will be Lottie Meyer's Diving Girls, the greatest water act in America.

Larger exhibits, faster racing, better facilities for exhibitors and visitors is the rule. Among the most important exhibits is a \$200,000 herd of short-horn cattle—winner of all prizes at the Chicago Show.

A man fully acquainted with preparations already made and who attends practically all the fairs in the East said the other day, "Among agricultural fairs, it's a giant."

Forty-five cents plus five cents war tax will be the price of admission to the greatest fair in the history of Lancaster.

## CANNON AND CROPS CONSUME THE SAME MATERIALS

War-time Conditions Threaten Fertilizer Supply.

Every cannon crash and every bursting bomb on the battlefields of Europe uses up important fertilizer materials. A single skirmish may consume more potential plant food than would be required to feed the fields of an entire township, and the quantities burned up during a real bombardment are tremendous. Last year more than 600,000 tons of nitrate went to make explosives, in the United States alone. Millions of tons of sulphuric acid were likewise consumed.

Fertilizers and warfare bear a most intimate and most sensitive relationship. War decreases the supply of fertilizing materials and at the same time increases the importance of their use. Food production takes on a patriotic aspect. The farmer's tools of production become of importance second only to the needs of the army itself. Yet when Mars is the arbiter, the preference on materials must go to the soldier rather than to the farmer.

This accounts for the shortage of materials from which fertilizers are made. But now a new danger threatens the spring fertilizer supply. The labor supply has failed. The needs of the munition plants and the shipyard have been so great as to seriously curtail the fertilizer factories. Many plants have lost 30 to 40 per cent of their labor, and there is no prospect of improvement by next spring.

In normal times spring fertilizers are turned out by working the factories at high speed during the latter winter and early spring months. Only half as many laborers are employed in November and December as in February and March.

With the present difficulty of getting laborers, it can be seen how remote is the chance of speeding up to double production next spring. There is only one way to get out the fertilizer shortage needed for next year's crops, and that is to start in now and run every factory as best it may every day from now until spring.

But manufacturing every day must mean shipping every day. Fertilizer factories do not have and cannot get storage space for this tremendous bulk of goods. Finished goods must be loaded directly on the cars and shipped to the consumer.

Here is where the farmer must help. He must place his order immediately and accept immediate shipment. In no other way can the problem be solved.

## CAN AMERICA PRODUCE HER OWN POTASH?

New light is thrown on this interesting question by facts and figures contained in a recent publication of the bureau of soils of the United States department of agriculture. Bulletin No. 572 gives a careful analysis of the probable potash supply to be had from the cement industry when apparatus for its recovery has been universally installed.

On the basis of an average production of 90,000,000 barrels of cement, the total potash escaping at present amounts to about 87,000 tons annually. It has been demonstrated commercially that 90 per cent of this potash is recoverable, and experiments show that 95 per cent of this amount is available in form or may readily be made available. On this basis we would have a production of approximately 75,000 tons of available potash each year.

Since only about 50 per cent of the potash in the raw material is ordinarily volatilized in the process of making cement, as handled at present, there is a prospect of still further quantities to be made available from this source.

The present high prices of potash are encouraging installation of collecting apparatus and when once installed the cost of potash recovery is small.

**Now Get Busy**  
On account of advanced years of the owner, who wants to be relieved of responsibility, I have five dwellings and a lot adjoining on North Barbara street, Mt. Joy, known as Sherk's Row, for sale. The price is right as I can show you a ten per cent. investment. Who wants it? Greater portion of money can remain in J. E. Schroll, Mt. Joy, Pa.

**Here's a Good Buy**  
The lot with two properties on E. Main street, of the estate of the late B. S. Dillinger. One house has all conveniences.  
Now don't delay but see me at once Jno. E. Schroll, Mt. Joy, Pa.

## Farmers' Inn Restaurant

MOUNT JOY, PA. A. H. STUMPF, Proprietor

I SERVE ANYTHING TO EAT IN SEASON

DEVILED CRABS EVERY SATURDAY

SOUPS, SANDWICHES, TRIPE, ETC., ETC.,

OPEN EVERY DAY

Soft Drinks of All Kinds

TRY WIZ THE FIZZ 7-16-ft

Sale Starts at 1:25 New York State and Erie Co. COWS AND BULLS

Bought Direct from the Farmers by the Undersigned AT PUBLIC SALE

ON FRIDAY, SEPT. 26th, 1919

The undersigned will sell at public sale at their stock yards opposite the Farmers' Inn, A. H. Stumpf, Proprietor, Mount Joy, Penna., the following live stock to wit:

## 80 HEAD OF FRESH COWS

SPRINGERS AND BULLS

A Lot of Stock Bulls

Also Stock Steers and Cattle for Beeves

About 60 cows, heifers and stock bulls. Don't miss this sale if you want good stock. Sale will positively start at 1:25 sharp.

CONDITION.—Note at 60 days with approved security and bank discount added.

J. B. KELLER & RO. RO. are always in the market for Fat, Bologna and Fresh Cows, Springers, Shoats and Fat Hogs.

## MR. FARMER

I am always in the market for

## VEAL CALVES

And will pay from 16 to 18 cents. If you have any drop me a card and I will call by truck for same.

Monday, Thursday and Friday are my receiving days.

## C. F. GREIDER

Fresh Cows, Springers, Fat and Bologna Cows bought at all times.

R. D. No. 2 COLUMBIA, PA.

## Don. W. Gorrecht Jeweler

37 WEST MAIN STREET

Wrist Watches in gold filled cases \$10.00

Octogon Shaped Gases \$12.00

## W. M. HOLLOWBUSH

ATTORNEY-AT-LAW  
Notary Public Bell Phone 43-84  
West Main St., Mount Joy, Pa.  
Days at Lancaster, Monday and Friday at No. 56 N. Duke Street, Second Floor, with W. C. Rehm.

Just What She Needed  
"I used a bottle of Chamberlain's Tablets some time ago and they proved to be just what I needed," writes Mrs. Volta Bankson, Chillicothe, Mo. "They not only relieved me of indigestion but toned up my liver and rid me of backache and dizziness that I had been subject to for some time. They did me a world of good and I will always speak a good word for them."

## PUBLIC SALE

Near Sporting Hill SATURDAY, OCTOBER 11, 1919

Will be sold at public sale on the premises of the undersigned at Dillinger's Mill, 1/2 mile west of Sporting Hill, in Rapho township, the following described personal property to wit:

**TWO SORREL HORSES**  
One Champion 2-ton wagon with new rims and tires, one 2,500 lbs. capacity mill wagon with top, one 1,200 lbs. capacity mill wagon with top, one 1,200 lbs. capacity spring wagon, a 1 and 2-horse wagon with shafts and pole, set 14-ft. hay flats, set manure planks, good hand dump hay rake, 4 1/2-ft. Wood mower, grain cradle, bob, sleigh with bees, good Oliver plow, 3 castiron feed troughs, spring harrow, shovel harrow, spike harrow, 2-horse scorer, 2-horse corn sheller with shaker sieve, 2 sets front gears, 2 sets truck harness, set heavy spring wagon harness, set buggy harness, flynets, collars, bridles, lot of forks, rakes, shovels 1-barrel copper kettle, one small copper kettle, lot of stoneware, fruit jars, lot of home-made soap, lot of chestnut posts, large lot of leather belting, 3 to 7-in. in width and various lengths, rubber belting, different sizes; bag trucks, warehouse trucks, large lot of grain bags, (150 good as new); elevator belts with buckets, 2 dust collectors, lot of paper bags, 2 platform scales, 600 lbs. capacity; 3 grain scoops, lot of shafting, screw jacks, wagon jacks, log and other chains, lot of carpenter tools and a large lot of articles too numerous to mention.

No Public Dinner Served  
Sale to commence at 12 M., when terms will be made known by

H. H. Snavely, Auct. W. A. Ensminger, Clerk.

## DESIRABLE FARM

OF 102 ACRES AT PUBLIC SALE

THURSDAY, SEPTEMBER 25, 1919

The undersigned will offer at public sale, on the premises, in Rapho township, Lancaster County, Penna., the following described Real Estate to wit:

**A TRACT OF GRAVEL LAND**  
Containing 102 Acres & 35 Perches Situate along the road leading from Mastsomville to Mount Joy, known as the Samuel Garber farm, one quarter mile west of Hossler's Meeting House and 3 miles northeast from Mount Joy Borough, adjoining lands of Rudolph Forry, Isaac Eshleman, Wm. Christ, Aaron Metzler and others. The improvements thereon erected consist of a LARGE 2-STORY FRAME DWELLING HOUSE with Frame Summer House and Furnace House Attached.

**LARGE FRAME BANK BARN,** Large Tobacco Shed Attached with large cellar and stripping room underneath. Corn barn and tobacco shed, large pig sty and poultry house and other outbuildings, running water at barn, never failing well with pump therein at the house. An orchard with choice apples, peach and other fruit trees. About 3 acres are excellent meadow and 6 acres of timber land of which 4 acres are with locust timber ready to cut. The residue is excellent farming land in a high state of cultivation. Persons wishing to view the property before the sale will be shown same by calling on the undersigned. Sale to commence at 2 o'clock p. m., of said day, terms and conditions made known by

MRS. ABRAHAM BRADLEY, A. K. Waser, Auct. Paul Keller, Clerk.

## MR. FARMER

I am always in the market for

## TRUSTEE'S SALE

VALUABLE REAL ESTATE

ON THURSDAY, SEPT. 25, 1919

The undersigned will sell at public sale on the premises in Rapho township, on the road leading from Mt. Joy to the Iron Bridge, 1 1/2 miles south of Mount Joy, the following described real estate to wit:

**A FARM OF 126 1/2 ACRES**  
of limestone land, situated in Rapho township, adjoining lands of Rev. Eli Engle, Reuben Hosterer, William H. Strickler and the Christian Nursery Estate. The improvements thereon erected are a 2 1/2 Story Stone Double Dwelling House with Summer House, attached, Large Bank Barn, Tobacco Shed, Pig Sty and all other necessary outbuildings. The land is in a high state of cultivation and is pleasantly located, being convenient to churches, schools and mechanics of all kinds. There is a very good orchard on the premises as well as an abundance of all kinds of fruit. Any person wishing to view the premises prior to day of sale will please call on the tenant.

Sale to commence at two o'clock p. m., when terms will be made known by

LANCASTER TRUST CO., Trustee of Martin E. Garber C. S. Frank, Auctioneer. W. M. Hollowbush, Attorney

**THE CLOCK YOU WANT TO BUY AT THE PRICE YOU WANT TO PAY. THE CLOCK STORE,**  
W. W. Apple & Son  
131 North Queen St. LANCASTER, PA.

**Do You Want to Save Some Money?**  
Re-insulating a battery is about the most expensiverepairthereis.  
And there's only one kind of battery in general use that isn't practically certain to be re-insulated—or junked—within the next year or two.  
That one exception is the Willard Battery with Threaded Rubber Insulation.  
Come in and we'll tell you why.

**CHAS. NEISS, Mgr.**  
West Main Street MOUNT JOY, PENNA.

**FIRE INSURANCE**  
TORNADO AND WINDSTORM INSURANCE

ALL LINES OF AUTOMOBILE INSURANCE, FIRE THEFT, ACCIDENT, ETC.

LIABILITY AND CASUALTY INSURANCE  
Employers and Public Liability Elevator, Steam Boiler, Plate Glass Burglar, Automobile

WORKMEN'S COMPENSATION  
ALL KINDS OF SURETY BONDS  
OLD, STRONG AND RELIABLE COMPANYS

Burglar, Liability and Casualty Insurance.  
This is an opportune time to consider auto insurance.  
Will submit lowest possible rates on any of the above lines on request. I solicit your patronage. 100% service.

**S. HESS HERSHEY**  
340 W. Donegal St. MT. JOY, PA.  
Bell Phone 63-R2

**WANTED**  
GIRLS WANTED

Apply at Bachman Chocolate Factory Florin, Pa.

FOR SALE — FRANTZ PREMIER AND SWEEPER-VAC ELECTRIC CLEANERS  
ALSO MOTORS  
A full line of Welbach Gas Supplies — Mantels, Burners, Globes, Etc.

**CHAS. S. FRANK**  
AUCTIONEER  
MOUNT JOY, PA.  
Prompt attention given to the Calling of Real Estate and Personal Property Sales. Terms Moderate.