

## Proof that Some Women Avoid Operations

Mrs. Etta Dorion, of Ogdensburg, Wis., says: "I suffered from female troubles which caused piercing pains like a knife through my back and side. I finally lost all my strength so I had to go to bed. The doctor advised an operation but I would not listen to it. I thought of what I had read about Lydia E. Pinkham's Vegetable Compound and tried it. The first bottle brought great relief and six bottles have entirely cured me. All women who have female trouble of any kind should try Lydia E. Pinkham's Vegetable Compound."

### How Mrs. Boyd Avoided an Operation.

Canton, Ohio.—"I suffered from a female trouble which caused me much suffering, and two doctors decided that I would have to go through an operation before I could get well. "My mother, who had been helped by Lydia E. Pinkham's Vegetable Compound, advised me to try it before submitting to an operation. It relieved me from my troubles so I can do my house work without any difficulty. I advise any woman who is afflicted with female troubles to give Lydia E. Pinkham's Vegetable Compound a trial and it will do as much for them."—Mrs. MARIE BOYD, 1421 5th St., N. E., Canton, Ohio.



Every Sick Woman Should Try

## LYDIA E. PINKHAM'S VEGETABLE COMPOUND

Before Submitting To An Operation

LYDIA E. PINKHAM MEDICINE CO. LYNN, MASS.

### RELIGIOUS NEWS IN OUR CHURCHES

NEWS PERTAINING TO ALL THE CHURCHES IN MOUNT JOY BORO AND THE ENTIRE SURROUNDING COMMUNITY

St. Mark's United Brethren Church  
Rev. C. A. Snavely, Pastor  
Sunday School 9:00 A. M.  
Worship and Sermon 10:15 A. M.  
Y. P. S. C. E. 6:45 P. M.  
Prayer-meeting Wednesday 7:30 P. M.

Florin U. B. Church  
Rev. M. H. Miller, Pastor  
Sunday School 9:30.  
Communion Service 10:30.

Trinity Lutheran Church  
Rev. Geo. A. Kercher, Pastor  
Bible School 9:30 A. M.  
Morning Service 10:45 A. M.  
Evening Service 7 P. M.  
The Women's Missionary Society meets Tuesday evening, Sept. 9th in the S. S. room.  
Choir rehearsal Friday 8 P. M.

For a Quick Buy  
I have a fine small home in Bamfordville, along the Lancaster and Harrisburg pike, 7 room frame house, concrete porches and walks, frame stable, hog pen, excellent well of water, 1-3-acre of land. Beautiful place live. Will take \$1,500 for a quick sale. J. E. Schroll, Mt. Joy.

Subscribe for the Mt. Joy Bulletin.

### PUBLIC SALE

#### VALUABLE LANCASTER COUNTY FARM & FISH HATCHERY

The undersigned will sell at public sale a farm containing 92 acres, 47 perches, situated in the VILLAGE of NEW PROVIDENCE, along the State highway, near trolley and railroad, having a large two-story brick dwelling house with bath, hot air heat and vault, a two-story frame tenant house, bank barn, two tobacco sheds and other buildings. On this farm is a licensed commercial fish hatchery, consisting of a series of thirty-three fish ponds in good condition.

At same time and place there will be sold a wood lot in Providence township, containing 8 acres, 144 perches.

Sale on farm in village of New Providence at 2:30 p. m., on FRIDAY, SEPTEMBER 5th, (five), 1918.

ANGIE W. PEOPLES, Executrix of Hiram Peoples, H. Edgar Sherts, Atty. sep. 3-1t

Look at our advertising columns and see the many successful business men they represent or rather speak for. Why not YOU?

## BETTER THAN WE CAN TELL IT

WHEN WE SAY THIS POWER AND LIGHT OUTFIT DOES ANY OTHER FROM THE STANDPOINT OF PERFORMANCE AND SERVICE, WE ARE ONLY GIVING YOU THE JUDGMENT OF THOSE WHO KNOW BEST—THOSE WHO OWN IT. THEY HAVE USED IT AND KNOW, SO THEY TELL IT BETTER THAN WE CAN. IT PUT THEIR FARMS ON A HIGHER PLANE—GAVE THEM EVERY CITY CONVENIENCE—SAVED EXPENSE—GAVE DEPENDABLE SERVICE NIGHT AND DAY.

The engine, generator and control panel are mounted on one base (the engine connected directly to the generator making up the set. 16-cell battery for service when engine is not being run, makes up the outfit complete).

The ENGINE is air-cooled, throttle governor, burns kerosene and develops 3 1/2 horse power. Splash-feed oiling system. Kerosene supply tank in base—fuel pumped by a vacuum-feed. Special air-cooling method for engine and generator.

The GENERATOR is supported by two bearings and designed to give tapering charge.

STARTING LEVER on control panel. Device for stopping engine automatically when battery is fully charged.

The SET can be used as an engine only.

## Western Electric POWER and LIGHT

DUAL-CONTROL method of battery charging. Battery charging, an extremely delicate and difficult procedure, is made simple by the dual-control method which is a feature of this plant. The engine and generator are designed to give the battery a tapering charge—the engine automatically stopping when charging is completed.

This TAPERING CHARGE allows just the right amount of current to flow into the battery at all times. It is the best way of charging and prolongs the life of the battery. In addition to the regular charging it is well to give the battery from time to time what is known as a soaking charge. This means extra long life to the battery. The battery switch provides for this periodic soaking charge. By the dual-control method the battery is charged as it should be.

EXTRA POWER. This is more than an electric power and light system. The set can be used as an engine only. A 6-in. pulley on the main shaft of the engine may be belted to line shafting and other machinery and run by the engine independent of the rest of the plant.

SPLASH-FEED OILING—the perfect oiling system—best system for plant operation—saves lubrication cost.

BURNS KEROSENE—vacuum-pump system—most economical; most satisfactory from every standpoint.

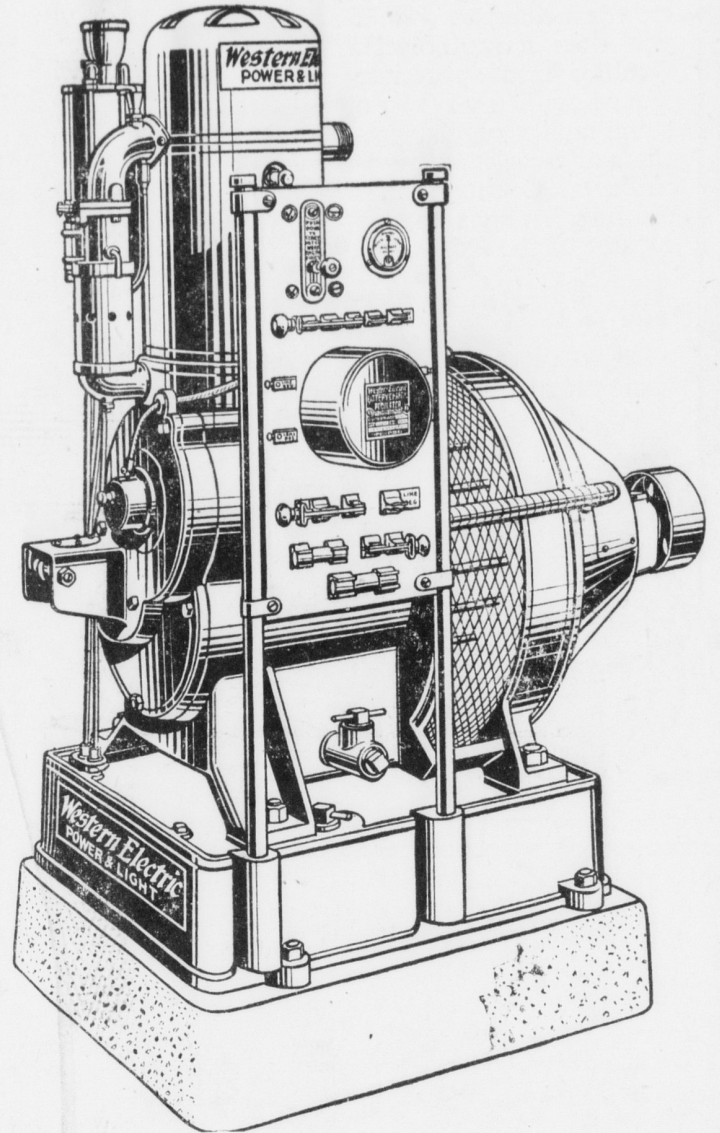
CLEAN—no oil drippings; no fumes.

Type	Watt Hour Capacity 8-hour Basis	Price
15-DC-90	2700	\$550.00
15-DC-180	5400	645.00

Always figure the size of any battery in terms of Watt Hours as discharged on 8-hour basis. This is the standard for determining battery capacity.

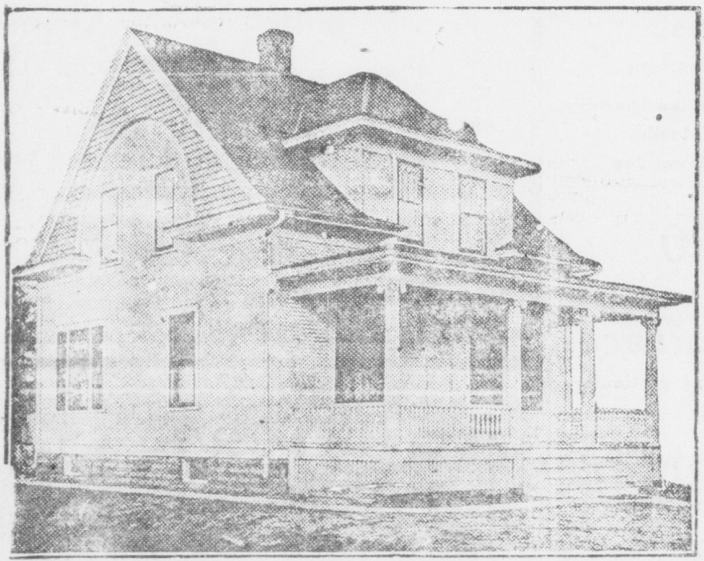
FOR FURTHER INFORMATION ASK

H. S. NEWCOMER, Mount Joy, Pa.



## A Rare Bargain

Here's one of the best properties I have offered for sale for some time, especially when condition and price are considered. Four years ago the late Horace Cox built this Bungalow for himself at Florin, and built it right. As it is too much house for his widow, she will dispose of it.



There are five rooms and bath on first floor, and three rooms and attic on second floor. Hot water heating plant, electric lights from cellar to attic, even in closets, two large cellars, one concreted, large porch, all Yale hardware used thruout building & positively in the best of condition. Not a more convenient home in this section. Beautiful lawn, large garden, chicken house, etc.

Trolley stops in front of house, one square to P. R. R. depot, 5 cent fare to Mount Joy.

Price on this beautiful home is far below what a similar home would cost today. Call, Phone or Write

JNO. E. SCHROLL

Both Telephones Mount Joy, Penna.

# REAL ESTATE

### BUILDING LOTS

No. 2—Four Lots, each 50x200 ft., on North Barbara St., Mount Joy.

No. 6—Two Lots, each 40x197 ft., on Frank St., Mount Joy.

No. 28—Seventeen choice lots fronting on the pike east of Florin. Some front on Old Line of P. R. R.

No. 29—Four lots on Fairview St., Mount Joy. Tract contains 1 1/2 acres.

No. 32—Two Lots in Florin, each 90x200. They front on Main St.

No. 35—One Lot 50x65 ft., on West Donegal St., Mount Joy.

No. 36—Two Lots each 45x212 ft., on Poplar St., Mount Joy.

No. 45—Four Lots in Florin, 40x200 ft. They front on Church St.

No. 66—Building lot 45x213 ft. on East side Poplar St. Mount Joy.

No. 77—Very desirable building lot fronting on the south side of Marietta street. Will sell any number of feet you want at \$6 per foot.

No. 57—A 5-acre tract in the bore of Mount Joy, fine large lot and would be a money-maker for trucking or speculating on building lots. The Dr. Ziegler tract.

No. 127—Lot 40x200 ft. in Florin, East Donegal Twp., fronts on Main street with good frame factory building 30x97 with steam heat and electric lights. Will be sold separate or will sell an 80 ft. front on pike with this factory, double house, stable, etc. All for only \$3,000.

No. 129—A tract of 1.3 of an acre at Bamford, or Harrisburg pike, 7 room house, concrete walks, frame stable, good well. Price, \$1,500.

No. 122—Lot 25x180 on Fairview St., Mt. Joy, 7 room house, stable, chicken house, etc., all in good shape. \$1,700.

Nos. 126 and 127—Two good frame houses of the Grey Iron Casting Co., on East Donegal St., Mt. Joy. Price is right.

No. 129—A fine, modern, newly built brick mansion, up-to-date with all conveniences on West Donegal St., Mt. Joy.

No. 81—A 3-story brick mansion in Maytown, excellent location, has all improvements—a neat home. Has large store room and would be fine for business and dwelling combined.

No. 83—A frame house and business stand on E. Main st., Mt. Joy, in business center. All improvements.

No. 84—A frame house adjoining No. 83; fine shape, all improvements. Will sell one or both.

No. 91—A 2-story frame house on West Main St., Mt. Joy. Lot is 205 ft. deep. Price, \$1,400.

No. 92—A 2 1/2-story frame house on West Main St., Mt. Joy, adjoining No. 91. Price, \$1,700.

No. 106—A fine 8-room frame house with bath, on West Main St., Mt. Joy, excellent shape, good stable, chicken house, etc.

No. 110—The Emanuel Sumpman property fronting 150 ft. on E. Donegal St., Mt. Joy, 12 room house, all conveniences, excellent condition. A real bargain.

No. 116—A 5-family stone house on North Barbara St., Mount Joy known as Shirk's Row, a very good buy. A real investment.

No. 117—Lot 40x200 in Master-sonville with frame house, stable, butcher shop, etc. Must be sold before April 1st.

No. 118—Lot 50 ft. front on E. Main St., Mt. Joy, has two houses that together rent for \$18 per month. Price \$2,500.

No. 121—A tract of 1.3 of an acre at Bamford, or Harrisburg pike, 7 room house, concrete walks, frame stable, good well. Price, \$1,500.

No. 122—Lot 25x180 on Fairview St., Mt. Joy, 7 room house, stable, chicken house, etc., all in good shape. \$1,700.

Nos. 126 and 127—Two good frame houses of the Grey Iron Casting Co., on East Donegal St., Mt. Joy. Price is right.

No. 129—A fine, modern, newly built brick mansion, up-to-date with all conveniences on West Donegal St., Mt. Joy.

No. 130—Lot 25x210 ft on David St., Mount Joy, with 2 1/2 story frame house, slate roof, concrete walks and pavement.

No. 132—A fine modern frame house, 8 rooms and bath, heat, gas in every room, large stable, residential section; Marietta St., Mt. Joy

No. 134—Beautiful bungalow in Florin, hot water heat, electric light, bath, 8 rooms, house new, trolley at door. Possession any time. Price right.

No. 30—Store property and dwelling with steam heat, bath, etc. Also brick warehouse at Lancaster Junction. Price very low.

No. 63—The entire concrete block manufacturing plant of J. Y. Kline at Florin, together with all stock, machinery, buildings, contracts, etc. Price very low.

No. 15—Fine 12-acre truck farm close to Columbia, good house and barn, excellent land; produced \$1,100 to all the trucking. Price, \$5,200.

No. 70—A 5-acre truck farm at Donegal Springs, none better, excellent buildings, an abundance of fruit, good water, etc. Price, \$3,500.

No. 82—A 1-acre tract 2 miles north of Mt. Joy, with frame house, stable, etc., \$900.

No. 97—A tract of good soil at Milton Grove, frame stable, good house, etc. For quick sale only \$700.

No. 107—An 8 1/2 acre tract of land in East Donegal, near Reich's church frame house, tobacco shed, barn, etc. \$4,000.00.

No. 124—A 6-acre tract of gravel land with barn, 7-room frame house, good well of water, only 2 miles from Mt. Joy for only \$900.00

No. 42—An 85-acre tract of farm timber and pasture land in West Donegal township, tract adjoins Ma-

No. 130—Lot 25x210 ft on David St., Mount Joy, with 2 1/2 story frame house, slate roof, concrete walks and pavement.

No. 132—A fine modern frame house, 8 rooms and bath, heat, gas in every room, large stable, residential section; Marietta St., Mt. Joy

No. 134—Beautiful bungalow in Florin, hot water heat, electric light, bath, 8 rooms, house new, trolley at door. Possession any time. Price right.

No. 30—Store property and dwelling with steam heat, bath, etc. Also brick warehouse at Lancaster Junction. Price very low.

No. 63—The entire concrete block manufacturing plant of J. Y. Kline at Florin, together with all stock, machinery, buildings, contracts, etc. Price very low.

No. 15—Fine 12-acre truck farm close to Columbia, good house and barn, excellent land; produced \$1,100 to all the trucking. Price, \$5,200.

No. 70—A 5-acre truck farm at Donegal Springs, none better, excellent buildings, an abundance of fruit, good water, etc. Price, \$3,500.

No. 82—A 1-acre tract 2 miles north of Mt. Joy, with frame house, stable, etc., \$900.

No. 97—A tract of good soil at Milton Grove, frame stable, good house, etc. For quick sale only \$700.

No. 107—An 8 1/2 acre tract of land in East Donegal, near Reich's church frame house, tobacco shed, barn, etc. \$4,000.00.

No. 124—A 6-acre tract of gravel land with barn, 7-room frame house, good well of water, only 2 miles from Mt. Joy for only \$900.00

No. 42—An 85-acre tract of farm timber and pasture land in West Donegal township, tract adjoins Ma-

sonic Homes ground on two sides. \$30 an acre for a quick sale.

No. 94—A 149 acre farm, iron stone soil, on Saravel pike, bank barn, 8-room house, shedding for 20 acres tobacco. \$90 per acre.

No. 95—A 65 acre farm near Conewago Station, all farm land, running water, bank barn, brick house, etc., for \$6,000. Immediate possession.

No. 102—An 86 acre farm in West Donegal, finest farm I ever offered, good buildings, on piked road, 4 acres timber ready to cut. No better farm in the county.

No. 128—A 31-acre tract of gravel land at Union Square, large house, lot of shedding for cattle, scales, etc., good well, also running water. Cheap.

No. 133—A 192 acre farm known as the Brookdale Stock farm, west of Lawm, 60 acres pasture, large barn, silo, 12-room brick house, bath and heat; a real farm at a right price.

No. 127—Lot 40x200 in Florin with a 1-story frame building 30x97 ft., electric lights, steam heat, basement, etc. Was formerly used as a shirt factory.

Two large frame buildings in Rheems, slate roofs, ample light. Formerly a canning factory. Will sell buildings and ground or sell buildings separate.

FACTORY SITES

No. 10—A tract fronting 107 ft. on the P. R. R. siding in Mount Joy has many advantages and centrally located. One of the best in the town.

I also have a number of properties that owners do not care to have advertised. If you don't find what you want in this list, call and see me. I have it.

Also 20 Lebanon Co. farms from 40 to 200 acres at \$4,000 to \$22,000.00.

CALL, PHONE OR WRITE

JNO. E. SCHROLL

BOTH TELEPHONES

MOUNT JOY, PENNA.

FRED