

# A Rare Bargain

Here's one of the best properties I have offered for sale for some time, especially when condition and price are considered. Four years ago the late Horace Cox built this Bungalow for himself at Florin, and built it right. As it is too much house for his widow, she will dispose of it.



There are five rooms and bath on first floor, and three rooms and attic on second floor. Hot water heating plant, electric lights from cellar to attic, even in closets, two large cellars, one concreted, large porch, all Yale hardware used thruout building & positively in the best of condition. Not a more convenient home in this section. Beautiful lawn, large garden, chicken house, etc.

Trolley stops in front of house, one square to P. R. R. depot, 5 cent fare to Mount Joy.

Price on this beautiful home is far below what a similar home would cost today. Call, Phone or Write

**JNO. E. SCHROLL**

Both Telephones Mount Joy, Penna.

# BETTER THAN WE CAN TELL IT

WHEN WE SAY THIS POWER AND LIGHT OUTFIT OUT-DOES ANY OTHER FROM THE STANDPOINT OF PERFORMANCE AND SERVICE, WE ARE ONLY GIVING YOU THE JUDGMENT OF THOSE WHO KNOW BEST—THOSE WHO OWN IT. THEY HAVE USED IT AND KNOW, SO THEY TELL IT BETTER THAN WE CAN. IT PUT THEIR FARMS ON A HIGHER PLANE—GAVE THEM EVERY CITY CONVENIENCE—SAVED EXPENSE—GAVE DEPENDABLE SERVICE NIGHT AND DAY.

The engine, generator and control panel are mounted on one base (the engine connected directly to the generator) making up the set. 16-cell battery for service when engine is not being run, makes up the outfit complete.

The ENGINE is air-cooled, throttle governor, burns kerosene and develops 3 1/4 horse power. Splash-feed oiling system. Kerosene supply tank in base—fuel pumped by a vacuum-feed. Special air-cooling method for engine and generator.

The GENERATOR is supported by two bearings and designed to give tapering charge.

STARTING LEVER on control panel. Device for stopping engine automatically when battery is fully charged.

The SET can be used as an engine only.

## Western Electric POWER and LIGHT

DUAL-CONTROL method of battery charging. Battery charging, an extremely delicate and difficult procedure, is made simple by the dual-control method which is a feature of this plant. The engine and generator are designed to give the battery a tapering charge—the engine automatically stopping when charging is completed.

This TAPERING CHARGE allows just the right amount of current to flow into the battery at all times. It is the best way of charging and prolongs the life of the battery. In addition to the regular charging it is well to give the battery from time to time what is known as a soaking charge. This means extra long life to the battery. The battery switch provides for this periodic soaking charge. By the dual-control method the battery is charged as it should be.

EXTRA POWER. This is more than an electric power and light system. The set can be used as an engine only. A 6-in. pulley on the main shaft of the engine may be belted to line shafting and other machinery and run by the engine independent of the rest of the plant.

SPLASH-FEED OILING—the perfect oiling system—best system for plant operation—saves lubrication cost.

BURNS KEROSENE—vacuum-pump system—most economical; most satisfactory from every standpoint.

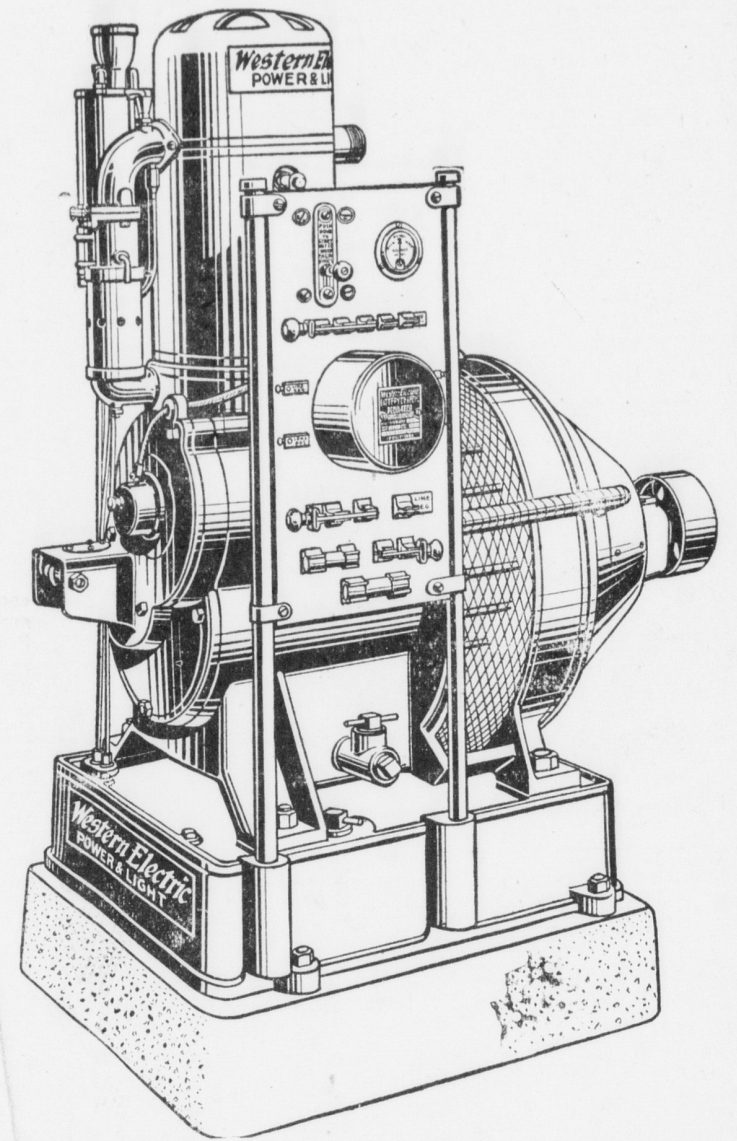
CLEAN—no oil drippings; no fumes.

Type	Watt Hour Capacity 8-hour Basis	Price
15-DC-90	2700	\$550.00
15-DC-180	5400	645.00

Always figure the size of any battery in terms of Watt Hours as discharged on 8-hour basis. This is the standard for determining battery capacity.

FOR FURTHER INFORMATION ASK

**H. S. NEWCOMER, Mount Joy, Pa.**



## NEW STORE OPENING SATURDAY, AUG. 30, 1919

I was exceedingly fortunate in securing Bowman's long established stand as the location for my new General Store.

The reputation which this stand has always had for fair dealing and honest values will be maintained.

On Saturday next, August 30th, we will be open for business.

My stock of groceries, dry goods, notions, etc. is complete, all new, and up to the minute.

I will endeavor at all times to give goods of the highest quality at the least possible price, and in order to do this will conduct the business on the cash and carry plan. On this basis I respectfully solicit a share of your trade

Everybody is invited to call and see my line of stock.

**F. A. Farmer**

Bowman's Old Stand MOUNT JOY, PENNA.

# REAL ESTATE

### BUILDING LOTS

- No. 2—Four Lots, each 50x200 ft., on North Barbara St., Mount Joy.
- No. 6—Two Lots, each 40x197 ft., on Frank St., Mount Joy.
- No. 28—Seventeen choice lots fronting on the pike east of Florin. Some front on Old Line of P. R. R.
- No. 29—Four lots on Fairview St., Mount Joy. Tract contains 1 1/2 acres.
- No. 32—Two Lots in Florin, each 90x200. They front on Main St.
- No. 35—One Lot 50x65 ft., on West Donegal St., Mount Joy.
- No. 36—Two Lots each 45x212 ft., on Poplar St., Mount Joy.
- No. 45—Four Lots in Florin, 40x200 ft. They front on Church St.
- No. 66—Building lot 45x215 ft. on East side Poplar St. Mount Joy.
- No. 77—Very desirable building lot fronting on the south side of Marietta street. Will sell any number of feet you want at \$6 per foot.
- No. 57—A 5-acre tract in the borough of Mount Joy, fine large lot and would be a money-maker for trucking or speculating on building lots. The Dr. Ziegler tract.
- No. 127—Lot 40x200 ft. in Florin, East Donegal Twp., fronts on Main street with good frame factory building 30x67 with steam heat and electric lights. Will be sold separate or will sell an 80 ft. front on pike with this factory, double house, stable, etc. All for only \$3,000.

### DWELLING HOUSES

- No. 4—The J. Harry Miller property on Columbia Avenue, Mt. Joy.
- No. 5—A 16-room apartment house for 3 families on East Main Street, Mount Joy.
- No. 8—A double house in Florin, the C. A. Wiley property.
- No. 50—A row of six newly built brick houses on Hazel St., Lancaster.
- No. 51—A large frame house in Florin, the S. S. Stacks property.
- No. 78—A fine 9-room house on West Main St., Mt. Joy in best of condition. Only \$2,000.
- No. 81—A 3-story brick mansion in Maytown, excellent location, has

all improvements—a real home. Has large store room and would be fine for business and dwelling combined.

- No. 83—A frame house and business stand on E. Main st., Mt. Joy, in business center. All improvements.
- No. 84—A frame house adjoining No. 83; fine shape, all improvements. Will sell one or both.
- No. 88—A 9-room frame house in Florin, at trolley, large stable, lot is 80x200. A fine home.
- No. 91—A 2-story frame house on West Main St., Mt. Joy. Lot is 205 ft. deep. Price, \$1,400.
- No. 92—A 2 1/2-story frame house on West Main St., Mt. Joy, adjoining No. 91. Price, \$1,700.
- No. 100—Lot in Salunga 48 1/2 x 100 ft., good 2 1/2 story frame house. Pleasant home. Price right.
- No. 106—A fine 8-room frame house with bath, on West Main St., Mt. Joy, excellent shape, good stable, chicken house, etc.
- No. 110—The Emanuel Sumpman property fronting 150 ft. on E. Donegal St., Mt. Joy, 12 room house, all conveniences, excellent condition. A real bargain.
- No. 116—A 5-family stone house on North Barbara St., Mount Joy known as Shirk's Row, a very good buy. A real investment.
- No. 117—Lot 40x200 in Master-sonville with frame house, stable, butcher shop, etc. Must be sold before April 1st.
- No. 118—Lot 50 ft. front on E. Main St., Mt. Joy, has two houses that together rent for \$18 per month. Price \$2,500.
- No. 121—A tract of 1-3 of an acre at Bamford, or Harrisburg pike, 7 room house, concrete walks, frame stable, good well. Price, \$1,500.
- No. 122—Lot 25x180 on Fairview St., Mt. Joy, 7 room house, stable, chicken house, etc., all in good shape. \$1,700.
- Nos. 126 and 127—Two good frame houses of the Grey Iron Casting Co., on East Donegal St., Mt. Joy. Price is right.

No. 129—A fine, modern, newly built brick mansion, up-to-date with all conveniences on West Donegal St., Mt. Joy.

No. 130—Lot 25x210 ft. on David St., Mount Joy, with 2 1/2 story frame house, slate roof, concrete walks and pavement.

No. 131—Lot 50x210 feet on David Street, Mount Joy, with 2 1/2 story frame 7-room house, hog pen, etc.; abundance of fruit.

No. 132—A fine modern frame house, 8 rooms and bath, heat, gas in every room, large stable, residential section; Marietta St., Mt. Joy

### BUSINESS STANDS

No. 63—The entire concrete block manufacturing plant of J. Y. Kline at Florin, together with all stock, machinery, buildings, contracts, etc. Price very low.

No. 99—A tobacco warehouse 40x50 ft., built for the business; has elevator, is only 8 miles from Lancaster. Also a frame house to go with it.

### TRUCK FARMS

- No. 15—Fine 12-acre truck farm close to Columbia, good house and barn, excellent land; produced \$1,100 to all the trucking. Price, \$5,200.
- No. 70—A 5-acre truck farm at Donegal Springs, none better, excellent buildings, an abundance of fruit, good water, etc. Price, \$3,500.
- No. 82—A 1-acre tract 2 miles north of Mt. Joy, with frame house, stable, etc., \$900.
- No. 97—A tract of good soil at Milton Grove, frame stable, good house, etc. For quick sale only \$700.
- No. 107—An 8 1/2 acre tract of land in East Donegal, near Reich's church, frame house, tobacco shed, barn, etc. \$4,000.00.
- No. 124—A 6-acre tract of gravel land with barn, 7-room frame house, good well of water, only 2 miles from Mt. Joy for only \$900.00

### LARGE FARMS

- No. 42—An 85-acre tract of farm timber and pasture land in West Donegal township, tract adjoins Masonic Homes ground on two sides \$30 an acre for a quick sale.
- No. 94—A 149 acre farm, iron stone soil, on Scriver pike, bank barn, 8-room house, shedding for 20 acres tobacco. \$90 per acre.
- No. 95—A 35 acre farm near Con-ewago Station, all farm land, running water, bank barn, brick house, etc., for \$6,000. Immediate possession.
- No. 102—An 86 acre farm in West Donegal, finest farm I ever offered, good buildings, on piked road, 4 acres timber ready to cut. No better farm in the county.
- No. 128—A 31-acre tract of gravel land at Union Square, large house, lot of shedding for cattle, scales, etc., good well, also running water. Cheap.
- No. 133—A 192 acre farm known as the Brookdale Stock farm, west of Lawn, 60 acres pasture, large barn, silo, 12-room brick house, bath and heat; a real farm at a right price.

### FACTORY BUILDINGS

- No. 127—Lot 40x200 in Florin with a 1-story frame building 30x67 ft., electric lights, steam heat, basement, etc. Was formerly used as a shirt factory.
- Two large frame buildings in Rheems, slate roofs, ample light. Formerly a canning factory. Will sell buildings and ground or sell buildings separate.

### FACTORY SITES

- No. 10—A tract fronting 107 ft. on the P. R. R. siding in Mount Joy has many advantages and centrally located. One of the best in the town. I also have a number of properties that owners do not care to have advertised. If you don't find what you want in this list, call and see me. I have it.

Also 20 Lebanon Co. farms from 40 to 200 acres at \$4,000 to \$22,000.00.

CALL, PHONE OR WRITE

**JNO. E. SCHROLL**

BOTH TELEPHONES

MOUNT JOY, PENNA.