

CLARENCE SCHOCK
MOUNT JOY, PA.

WE ASK PATRONAGE WE GIVE SERVICE

LUMBER-COAL

DR. KRUSEN SAYS

To prevent influenza get a nasal atomizer from your druggist and use Tincture of Iodine and salt in a spray for the nose and throat night and morning. If in need of a spray you can get the above preparation already prepared for immediate use.

E. W. Garber

The Rexall Store
Mount Joy, Pa.

THE WINGERT & HAAS HAT STORE

New Fall Hats
CAPS & GLOVES

We are the acknowledged headquarters for Fall Hats. We have all kinds at all prices.

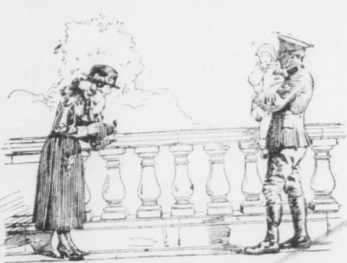
JOHN A. HAAS, Proprietor
144 North Queen Street LANCASTER, PENNA.

On a Cash Basis

Owing to the fact that two of my sons have been called to the service, and the scarcity of help, I will, beginning Monday, July 29, do business on a STRICTLY CASH BASIS ONLY.

F. B. GROFF

SADDLER MOUNT JOY, PA.



Kodak Pictures

Are Keeping the Home Story of the War in a Million Homes

W. B. BENDER

Kodaks and Kodak Supplies
122 East Main Street, MOUNT JOY, PA

Apply Now For
Hunters License
\$1.15

Henry G. Carpenter

Opposite Post Office MOUNT JOY, PA.

HUNDREDS USE IT FOR COLDS

Because Chandler's Cold Compound relieves cold or gripe misery in a few hours.

Chandler's Drug Store

West Main Street Mount Joy, Penna.

OUR DEPARTMENT OF AGRICULTURE

A WEEKLY LETTER PREPARED FOR THE BULLETIN BY THE STATE DEPARTMENT OF AGRICULTURE

What the Department of Agriculture is doing

How Farmers Have Planted Wheat
A representative of the Office of Farm Management, Department of Agriculture, recently returned from an inspection of the typical parts of the winter-wheat area in the States, reports that in Kansas, Oklahoma, and Colorado the soil generally was in excellent condition for the fall sowing, and farmers were doing their best to get in as much land as they could before the onset of the short-ages of labor, due to the draft, farmers were hurrying the sowing of wheat before their boys had to leave. In some of the dryer portions of Kansas, where there had been two successive failures of wheat, farmers were finding it hard to put in a full crop on account of lack of seed. In these places, however, the difficulty was being largely overcome by Government loans for buying seed. In the winter-wheat section of Oregon, Washington, and Idaho the summer had been exceptionally dry, and up to October 5 there had been insufficient rains in many places to make it safe to sow wheat. Some farmers, however, were taking a greater risk than usual by sowing the wheat, which ought to be in the ground at about this time.

"Every Patch a War-Savings Stamp"
To arouse interest in clothing conservation, an Oregon home demonstration agent held an exhibit of remodeled garments which had been loaned to her by the school of home economics of the agricultural college. Following this exhibit, the women called on her by phone for pointers and suggestions as to how their materials and problems to her office, having overcome their hesitancy to let their neighbors know they are patching up their old clothes. Records have been kept of the cost of remodeling the garments and war textiles conserved.

Entomologists Prepare for War Service
Because of the possible need of a large number of entomologists for service in the Army as entomological sanitarians, especially in connection with the "cootie" problem, a class in the entomology of disease, hygiene, and sanitation meets regularly in the Bureau of Entomology of the Department of Agriculture in Washington. The proceedings of this class have been mimeographed and sent throughout the country to entomologists who have enrolled. In this way knowledge of the control of disease-carrying insects has been greatly increased among entomologists, making them better equipped to render such service as the War Department may call for.

Raise Horses of Better Quality
Large numbers of undesirable, mediocre horses are being turned out to the market at present in all parts of the country in order to save feed, according to reports to the United States Department of Agriculture. As a consequence the market is glutted with commonplace animals of this description to the extent that the prices paid are unusually low. The department urges farmers to raise horses of better breeding and quality. The supply of desirable-quality heavy draft horses or animals suitable for artillery or cavalry purposes is below the demand, while the price of such animals are correspondingly high. In view of both the domestic and foreign demand during and after the war for quality horses, farmers should begin now to stock up their barns with horse flesh of the desirable type. Under existing conditions feeding stuffs for work animals are extremely high in price. On this account it is imperative that the farmer should winter only work stock of the useful, most efficient, and valuable type. One heavy draft horse will perform the work of practically two undersized, inferior plugs, which such an animal can be fed at about the price of one maintenance as for one of the plugs. When the farmer desires to sell a heavy horse of quality and breeding he can always locate a ready market, whereas inferior animals can only be disposed of only at a sacrifice.

How Dangerous Insects Are Watched
The extent to which the principal crops of this country are attacked by injurious insects is known almost from day to day for the entire United States by the Department of Agriculture's Bureau of Entomology through its "war emergency entomological intelligence service." Co-operative arrangements have been made with the entomologists of the State agricultural colleges and experiment stations, teachers of entomology in other colleges and universities, Forest Service field workers, county agents, extension service field employees, and all other available sources by which undue increase of any insect pest is immediately reported to the bureau. In this way knowledge of prospective outbreaks is centralized and then distributed to bring about prompt and efficacious treatment. The information thus brought together is issued monthly to the economic entomologists of the country.

Collecting Forest Range Plants
More than 35,000 plant specimens representing 4,800 species, have been collected on national forests and purchase areas by Forest Service officers in connection with the extensive studies made of the distribution, natural habits, and economic importance of the range flora. The data obtained have direct application to many phases of range management, such as intensive range utilization, especially with a view to minimum interference with the requirements of the important forage plants and the utilization of each type at the time and by the class of stock to which it is best adapted. Use of these data is also made in the detection, eradication, and fencing of poisonous plant areas, in natural range reseeding, and other range studies.

United States to Buy Beef for Quality
At a conference attended by Secretary Daniels of the Navy, Secretary Houston of the Department of Agriculture, Mr. Hoover of the Food Administration, and representatives of the Quartermaster General of the Army and of the Paymaster General of the Navy, a unanimous agreement was reached that all future purchases of beef for our Army, Navy, and Marine Corps and fighting forces of the allies shall be made on a basis of quality, irrespective of weight. The representatives of the other departments agreed that the Department of Agriculture should select the meats on the basis of quality through its in-

spectors at the purchasing markets. The arrangements effected will protect the fighting forces in the matter of quality of meats and at the same time bring about a better balanced condition in the live-stock industry. This course of action is in accordance with sound principles of production and conservation which have been advocated by the Department of Agriculture, the Food Administration, and the other departments, with a view to an assurance of an adequate supply of beef for the future.

Many Rodents Killed in Montana
Rodent-control work in Montana during the past season has saved \$2,760,000 worth of farm crops at a cost of \$82,800, according to the report of the Montana extension specialist in rodent control. The Bureau of Biological Survey, which cooperates with the State agencies, furnished trained leadership and contributed \$12,000 from its emergency appropriation toward the cost, and Montana farmers paid the remaining \$70,800. Work was carried on in 25 counties, and 276 tons of poisoned oats were prepared in accordance with the Bureau of Biological Survey formula. The numbers of ground squirrels and prairie-dogs were destroyed. The increasing demand for the work, according to the report of the State specialist, has secured it a prominent place on the programs of work of the county agents and has made easy the introduction of other lines of agricultural improvement work.

Sell Flowers and Vegetables for French Wounded
During the summer months several Virginia garden clubs have sold flowers, fruits, and other produce, and contributed their profits to the American Fund for the French Wounded. A hall in the local market building was hired in one town and the different members have alternated in selling from it. A small curb market was utilized in another place. In each nearly all the produce was donated, but sometimes half of the price has been returned to the donor and the rest kept for the fund. The home demonstration agent has had the planning and general oversight.

Exhibits Drawing Big Crowds
Reports from five circuits of State fairs and other large exhibitions at which the United States Government exhibits are being shown tell of large crowds and great interest in the displays, which are made up from material contributed by the Departments of War, Navy, Interior, Commerce, and Agriculture, the Food Administration, and the United States Public Information. The influenza epidemic in recent weeks has interfered with some itineraries, but, on the whole, the exhibits are thought to have performed effective war-time work by attracting and directing interest in governmental activities, civil as well as military. F. Lamson-Scribner, of the Department of Agriculture, is chairman of the joint committee on Government Exhibits, which includes representatives from all departments cooperating.

Investigates Seed Exports
The seed-reporting service of the Bureau of Markets frequently is called upon to advise the War Trade Board relative to the granting of licenses for the export of vegetable seeds. In order that this might be done intelligently and expeditiously, it seemed desirable at this time to ascertain the facts as to the kinds and total quantities of vegetable seeds for which export licenses are desired. These facts will be considered in connection with information as to the available supplies and probable consumption, and can be used as a basis for advising the War Trade Board relative to granting export licenses. With this end in view an inquiry has been made of the seed-reporting service as to the exports of vegetable seeds to Canada, our other allies, and neutral countries.

Complete figures have not yet been compiled from this inquiry, but it may be said that a large increase in exports over 1917 is contemplated this year by a number of concerns. This increase amounts in certain cases to five or six times the amount exported in 1917.

Colored Church Buys Canner
Successful canning work has been done in a colored community in Virginia the past summer through the foresight of its minister. Impressed by the home demonstration agent's talks on the value of canning the surplus products of the farm, this up-to-date leader of a colored church decided to invest in a large hot-water canner and 4,000 cans for a start. His plan as it was carried out was to commercialize work but to get the people of his church to save enough for themselves this winter. His daughter has had charge of it, and the members of the congregation have brought their fruit and vegetables to his house and canned there under supervision, saving money for themselves and canned goods for the soldiers.

Fireless Cookers That Are Safe
Recently a National Board of Fire Underwriters issued a caution against using wooden pails or tubs to make homemade fireless cookers. To eliminate the danger of fires from these valuable fuel savers, the Department of Agriculture advocates using ground-up asbestos in place of hay, paper, or wool for packing in them. Additional safety may be attained by making the cooker from a tin can.

South to Raise More Broom Corn
Replies to an inquiry in reference to broom-corn production recently sent out by the States Relations Service of the Department of Agriculture have been very encouraging. Florida, Mississippi, Tennessee, Louisiana, Alabama—in fact, the majority of the Southern States—give promise of this crop, which, at the present excessive high price of brooms, is quite remunerative. In November, at the conference of representatives from the various boys' and girls' clubs of the South in Washington, increased cultivation will be emphasized and encouraged. At this meeting also it is planned to have a boy broom maker from a near-by State demonstrate the simplicity of "home" broom making and give actual figures on the low cost of turning out the finished product.

PUBLIC SALE OF VALUABLE REAL ESTATE

In Mount Joy, Pa.

ON THURSDAY, OCTOBER 31, 1918
In pursuance of an order of the Orphans' Court of Lancaster County, will be sold by the undersigned Administratrix of the estate of Richard G. Heilig, deceased, all his undivided one-half title and interest in the following described real estate, to wit:

NO. 1—All that certain tract or piece of land situate on the north side of Columbia avenue, in the borough of Mount Joy, county of Lancaster, having thereon erected a 2 1/2 STORY FRAME DWELLING HOUSE, and other improvements, containing in front on Columbia avenue, 28 feet more or less and extending in depth to Oak alley where it fronts about 104 feet more or less. Bounded on the north by Oak alley, on the east by Walnut street, on the south by Columbia avenue, and on the west by property now or formerly of Geo. Brown's Sons.

NO. 2—All that certain tract or piece of land situate on the south side of East Main street, in the borough of Mount Joy, Lancaster county, Pa., having thereon erected

TWO AND ONE-HALF STORY FRAME DWELLING HOUSE, BAKERY, Stable, Wagon-shed, and other improvements. Containing in front on East Main street, 33 feet and extending in depth to the public street on the north by East Main street, on the east by property of Mrs. Anna McGin, on the south by a public street, and on the west by the Bethel Church.

Sale to be held at the Exchange Hotel, Mount Joy, Pa., on Thursday, October 31, 1918, when terms and conditions will be made known by the undersigned.

BARBARA P. HEILIG, Administratrix of Richard G. Heilig, Deceased.

B. F. Davis, Atty. Chas. S. Frank, Auct. 10-9-31

Here you are FARMERS

You all know land is scarce and comparatively few farms are being sold now. Prospective buyers should phone or write for a complete description of any of these:

- 1 acre..... \$ 900.00
- 1 acre..... 1,600.00
- 3 acres..... 600.00
- 5 acres..... 3,500.00
- 10 acres..... 6,000.00
- 12 acres..... 5,200.00
- 14 acres..... 1,800.00
- 41 acres..... 13,000.00
- 52 acres..... 16,000.00
- 55 acres..... 16,000.00
- 65 acres..... 6,000.00
- 86 acres..... 25,800.00
- 126 acres..... 11,000.00
- 149 acres..... 13,000.00
- 207 acres..... 14,500.00

Also 20 Lebanon Co. farms from 40 to 200 acres at \$4,000 to \$22,000.00.

CALL, PHONE OR WRITE

Jno. E. Schroll
Mt. Joy, Pa.

City Shoe
Repairing Company
OLD SHOES MADE TO LOOK LIKE NEW ONES

50 and 52 South Queen Street
LANCASTER, PENNA.

PLUMBING

Tinning and Spouting
THAT'S MY BUSINESS

Also all kinds of repair work of every description. Work must be right

A SHARE OF YOUR BUSINESS SOLICITED

Charles Ricksecker
East Main St. MOUNT JOY

W. M. HOLLOWBUSH
ATTORNEY-AT-LAW

Notary Public Bell Phone 43-R4
West Main St. Mount Joy, Pa.
Days at Lancaster, Monday and Friday at No. 56 N. Duke Street, Second Floor, with W. C. Rehm.

WANTED TEN MEN

Apply to
Mt. Joy Magnesia Co.
sep.25-3mo.

Cash for Old False Teeth

Don't matter if broken. We pay up to \$15.00, according to value. Also cash for Old Gold, Jewelry, Silver, dental crowns or bridgework. We send cash by return mail and will hold goods 10 days for sender's approval of our price. Send by Parcel Post or write first for particulars.

DOMESTIC SUPPLY CO.
Department 32. Binghamton, N. Y.

FALSE TEETH We pay up to \$35 for old broken sets. Send Parcel Post or write for particulars. Domestic Supply Co., Dept. 32, Binghamton, N. Y.

Get Clothes That Save For You

There are other ways of saving than by not spending money; sometimes the greatest saving of all is when you do spend money.

That's what happens when you buy Hart, Schaffner & Marx clothes. You get so much real value, in service, in all wool fabrics, in good looking style; you get clothes that last so long that there's real economy in buying them.

That's why we have these clothes to sell; that's why we say—if you need clothes this Fall, the real way to save money is to spend it for Hart, Schaffner & Marx clothes.

Groff & Wolf Co.,
26 30 North Queen
Lancaster's Fastest Growing Store

Ford

J. B. BUSSER
Sales Agent For

Ford Cars

Two good second-hand Ford touring cars can be seen at the Garage.

Rapho and Penn Townships
Garage and Salesroom
Manheim, Pa.

Old Shoes Made New

Don't discard that pair of old shoes until you first see whether they can't be repaired at a nominal cost. Bring them here and you'll be surprised how reasonable I can make them look like new. That isn't the only surprise you'll get either. My charges are very reasonable. OPEN EVENINGS.

H. Laskewitz
East Main Street MOUNT JOY, PENNA.

Auto Repair Shop & Garage

510-12 N. Cherry St., Lancaster Pa.

Two Good FORD CARS For Sale
One Touring and a Truck
Also Extra Good Speed Roadster

WE REBUILD TRACTORS FOR FARM USE OUT OF YOUR OLD AUTOMOBILE AND CHARGE YOU ONLY FOR THE WORK.
WHEN WE FURNISH THE MACHINE FOR THE TRACTOR THE PRICE RANGES FROM \$200 to \$500.
Bell phone 2227-J. Ind. Phone 72-Y

Furniture

I will continue the furniture business on the second floor of the Engle Building, with a complete up-to-date line of all kinds of furniture. Prices are very reasonable. When in need of furniture call and see me.

Repairing and Painting a Specialty
Special Attention Given to REMODLING ANTIQUE FURNITURE

D. H. ENGLE,