



Manufactured by The House of Quality COLUMBIA, PA.

HOTEL MCGINNIS East Main St. Mount Joy, Penna. Restaurant and Lunch Bar OYSTERS IN ANY STYLE CLAMS IN ANY STYLE DEVIL CRABS TURTLE SOUPS

ROBERT H. HOKE PROFESSIONAL UNDERTAKER AND EMBALMER

'Great New CASE 40' Price \$1190.00

Our agents are making big money... Cash Profit of \$1904.00

YOUR NEXT Williams-The Barber

THE FAMOUS CHINATEAGUE OYSTERS 35 CENTS PER QUART

FOR HAND-MADE HARNESS R.D. RAFFENBERGER SALUNGA, PA.

Advertising a Sale!

YOU don't leave your rig in the middle of the road...

Put an ad in this paper, then, regardless of the weather...

If he is a prospective buyer you'll have him at your side...

Don't think of having a special sale without using advertising space in this paper.

One Extra Buyer at a sale often pays the entire expense of the ad. Get That Buyer

SPRING SUITS

SOUTHERN SEASON BRINGS OUT UNUSUALLY LARGE DISPLAY.

Accepted Lines of Conventionally Severe Tailored Coat Show Little Change From Those of Last Winter.

The Southern season always brings out a certain number of spring tailored suits...

As is generally the case in the spring the Norfolk suit, although often having little in common with the Norfolk except its belt...

Then there is the suit coat semi-fitted and rippling around the bottom. This varies in length from hip to finger tip length...

A fanciful tailored costume of black satin revealed a pearl gray waistcoat embroidered in silver.

The spring frocks multiply daily. A lovely model recently noted was of navy blue serge and navy blue and green checked material.

Great vogue is predicted for braided trimming. An interesting model noted is of navy cloth and black satin.

For more dressy frocks there is predicted a return of the vogue for taffeta. This silk is also much in demand for trimmings and combined with georgette crepe and voile.

Frocks of satin are much in vogue. Black satin intended for dress wear was embellished with designs of Indian cashmere in medallion form with metallic embroidery on bodice front and cuffs.

YOUR NEXT Williams-The Barber

THE FAMOUS CHINATEAGUE OYSTERS 35 CENTS PER QUART

FOR HAND-MADE HARNESS R.D. RAFFENBERGER SALUNGA, PA.

GO TO R.D. RAFFENBERGER SALUNGA, PA.



Here is a spring walking suit, plaited in the front, and cut on military lines copied from the service uniforms of Uncle Sam's soldiers.

The hot sun shining through the glass always rots the bottom of the curtain before the upper half is near worn out.

Put an ad in this paper, then, regardless of the weather, the fellow you want to reach reads your announcements while seated at his bedside.

If he is a prospective buyer you'll have him at your side. One extra buyer often pays the entire expense of the ad, and it's a poor ad that won't pull that buyer.

Don't think of having a special sale without using advertising space in this paper.

One Extra Buyer at a sale often pays the entire expense of the ad. Get That Buyer

NOVEL SPRING HAT



A spring hat of novel design embroidered with darning cotton. The crown is a spool form made of cotton net and val lace.

COIFFURE TO SUIT FEATURES Individuality in Hairdressing Is Becoming More Pronounced—Modified Casque New Style.

Individuality in hairdressing grows more pronounced. Some really artistic coiffures, enough on present lines to look odd, are curiously in character with the faces they frame.

There is no headress newer than the modified casque, rising a bit higher on the top of the head as it is drawn toward the back.

PAPAL HAT IS NEW DESIGN Brim Is Cut Into Two High Points in Front and Back—Tendency Shown Toward Exposing the Hair.

The papal hat, called the mitre, has been launched in Paris. It fits the head snugly and the brim is cut into two high points of even height, back and front.

Gold and oxidized lace is arranged in butterflies and bows on evening hats. The wearing of a picture hat with a low gown at a public place in the evening has returned to fashion.

Stiff wings are taken up by the milliners for high turbans.

New Umbrellas. The latest umbrella shows a tiny watch in the strap handle. The conservative umbrella is disappearing.

A Curtain Hint. The hot sun shining through the glass always rots the bottom of the curtain before the upper half is near worn out.

Silk Net in Orchid Colors. Silk net in orchid colors is again introduced for evening gowns. It does not appeal to the world as anything original, but women are eagerly accepting gowns of it when they present a combination of six or seven colors of tulle arranged in panels or superimposed in layers.

FRUIT LAXATIVE FOR SICK CHILD

'California Syrup of Figs' can't harm tender stomach, liver and bowels.

Every mother realizes, after giving her children 'California Syrup of Figs' that this is their ideal laxative, because they love its pleasant taste and it thoroughly cleanses the tender little stomach, liver and bowels without griping.

When cross, irritable, feverish, or breath is bad, stomach sour, look at the tongue, mother! If coated, give a teaspoonful of this harmless 'fruit laxative,' and in a few hours all the foul, constipated waste, sour bile and undigested food passes out of the bowels, and you have a well, playful child again.

Canada has 728 waterworks systems, costing \$123,000,000.

CLEAR YOUR COMPLEXION While You Sleep With Cuticura Soap and Ointment—Trial Free.

On retiring, gently smear the face with Cuticura Ointment, wash off in five minutes with Cuticura Soap and hot water, and continue bathing a few minutes with the Soap.

To Drive Out Malaria And Build Up The System Take The Old Standard GROVE'S TASTELESS CHILL TONIC.

TIME TO PAY FOREIGN DEBTS Coins of Most of European Countries Are Worth Much Less Now Than Before the War.

In peace days a Russian ruble is worth a trifle more than 51 cents of American money. Now it is worth less than 28 cents.

Before the war an Italian lira was worth a shade under 20 cents of American money, and now it is worth less than 14 cents.

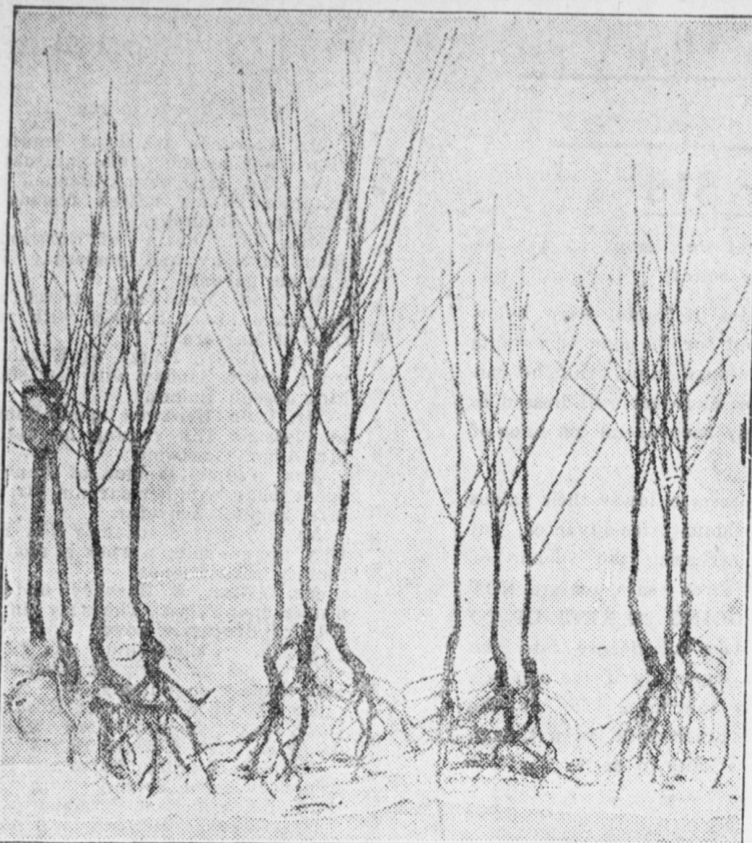
Strong Proof. She—They must be engaged. That's her fourth dance with him this evening. He—That's no sign. She—Isn't it? You don't know how she dances.

Have You Ever Suspected that the cause of various annoying ills might lie in the daily cup of tea or coffee? A sure and easy way out of coffee and tea troubles is to shift to Instant Postum.

There's no caffeine nor anything harmful in this delightful, pure food-drink—just the nourishing goodness of wheat.

Postum has put thousands of former tea and coffee drinkers on the Road to wellville. 'There's a Reason'

FACTORS INCIDENT TO PLANTING CHERRIES



FOUR DIFFERENT GRADES OF NURSERY STOCK.

Cherry trees do not thrive well as a rule where the summers are particularly long and hot. For this reason more than any other they are grown but little in the South, and to the limited extent they are planted in that part of the country the best success is attained at the higher altitudes.

In their endurance of low temperatures the widely grown sour cherry varieties approach the apple varieties which are grown commonly in the northern commercial apple-producing districts.

The leading varieties of sweet cherries are less hardy than the best-known sour sorts. Their endurance of cold corresponds more nearly to that of the peach. It may be doubted whether sweet cherries as a group endure long, hot summers any better than the sour sorts, possibly not so well.

Locations for Cherry Growing. In selecting a location for cherry growing—that is, the general region or community in which the enterprise is to be developed—fruit growers should realize that as the fruit is very perishable, quick transportation to market is essential, and also refrigerator service if the fruit is to be shipped long distances; and, further, a relatively large crew is required to handle the fruit properly.

Sites for Orchards. The 'site' is the exact piece of land occupied by the trees. The same general factors which require consideration in selecting a site for an apple or peach orchard need to be taken into account in choosing sites for cherries.

Cherry trees thrive on a wide range of soil types, provided the soils are well drained. There is, perhaps, no fruit tree more sensitive to the ill-effects of a poorly drained soil than the cherry.

Handling Nursery Trees. The trees should be unpacked immediately after delivery and every possible precaution taken to prevent the roots from becoming dry.

Preparing the Land. The ideal preparation of the soil for cherry trees consists of deep plowing and thorough pulverizing with a harrow or cultivator.

Straw is Good Fertilizer Rich in Potash, Nitrogen and Phosphorus—Supplies Needed Organic Matter to Soil.

Straw stacks are too valuable to be burned. According to figures supplied by the chemistry department of the Nebraska College of Agriculture, the fertilizing value of wheat straw is \$2.50 and of oat straw \$3.10 per ton.

Corn in Dry Regions. In dry regions corn cultivation is more essential and requires more good judgment than in most other sections. The primary object of cultivation is to prevent loss of moisture.

Keeping Bees Inside. Bees wintered inside should be kept at a temperature of about 45 degrees.

Peculiar Superstition.

If fake teeth could talk, they would tell strange tales. A farmer's wife attributed her good luck with a certain kind of delicious cookie for which she was famous to the fact that the mold with which she always cut out the cookies was a set of false teeth willed to her by an aunt who, in her time, had been able to cook to heat the band.

'Meticulous.' The use of the word 'meticulous' in the sense of 'particular' may be understood by the following definitions, which we quote in answer to a request for the citation of authorities: Century Dictionary, 'timid; over-careful; New Standard, 'over-cautious; Oxford Concise, 'over-scrupulous about minute details.' The word is from the Latin 'meticulosus,' 'full of fear,' the derivation being from 'metus,' 'fear.'

That's Why. 'Myers is a changed man since he bought that place in the country. When he lived in the city he used to be too lazy to hang up the pictures when he moved from one apartment to another, but now he's always pottering about his house and grounds, making some improvement or other.' 'Maybe he's trying to fix the place up so he can sell it again.'

The Home Remedy for coughs, colds, hoarseness; pleasant to take and sure to help when needed.

Hale's Honey Of Morehouse and Tar A tonic, expectorant and laxative. Contains no opium nor anything injurious. Sold by all druggists.

TAPS Relieves and Remedies CONSTIPATION Take a tip—take a TAP

Logical Result. 'What a pretty girl she is!' 'Yes, and lots of men are trying to get the chance to ring her.'

GIRLS! GIRLS! TRY IT, BEAUTIFY YOUR HAIR

Your hair becomes light, wavy, fluffy, abundant and appears as soft, lustrous and beautiful as a young girl's after a 'Dandarine hair cleanse.'

Both salt and fresh water fish are caught in Lake Maracaibo in Venezuela.

Dr. Pierce's Favorite Prescription makes weak women strong, sick women well, and alcohol. Sold in tablets or liquid—Adv.

The man who publishes the fact that he takes himself seriously is inviting the derisive ha-ha!

Pure blood is essential to Good Health. Garfield Tea dispels impurities, cleanses the system and eradicates disease. Adv.

Turkey has put bakeries under government rule.

Rest Those Worn Nerves 'Every Picture Tells a Story'

Don't give up. When you feel all unstrung; when family cares seem too hard to bear, and backache, dizzy, aches, queer pains and irregular action of the kidneys and bladder may mysteriously come from weak kidneys and it may be that you only need Doan's Kidney Pills to make you well.

DOAN'S KIDNEY PILLS 50c at all Stores Foster-Milburn Co. Props. Buffalo, N.Y.