

2000 Yards

OF Unbleached Muslin 5c Per Yard

H. E. Hauer Mount Joy, Pa.



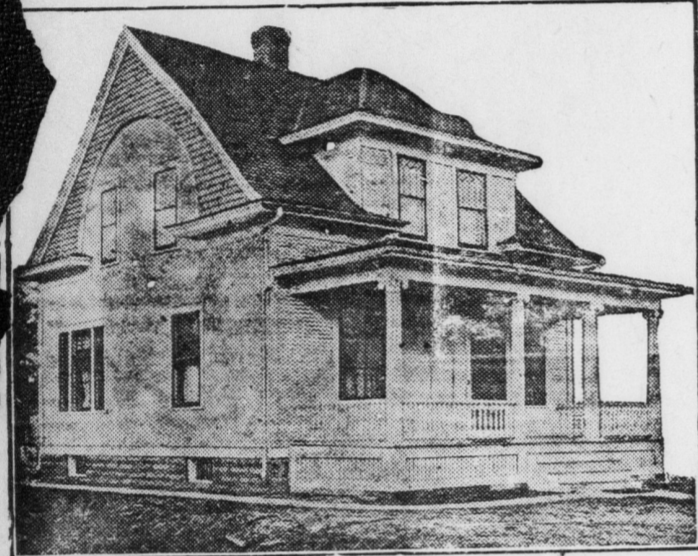
That's Our Business THE BULLETIN Mount Joy, Pa.

REAL ESTATE

Bought--Sold--Exchanged

The undersigned has opened a Real Estate Brokers' office and is prepared to handle all kinds of real estate. Thoroughly advertising your property gets you the highest price for it every time. If you want to buy or sell, see me.

All real estate is listed and advertised absolutely FREE. If you have anything in this line, call me on either side; I'll do the rest.



NO. 1 Situated along the Scraper Pike, Route 1 from Elizabethtown, a good farm of 52 acres, forty-five acres are land, balance woodland; 2 1/2 story brick house with winter kitchen and a 1 1/2 story frame summer house; good bank barn, horse sty, wood shed, etc. Excellent orchard, an abundance of fruit, good fences. Price \$4,800.00

NO. 2 Situated in East Donegal township, 3 miles west of Mount Joy, near Kraybill's Church, a limestone farm of 104 acres, large stone and brick house, spacious bank barn, big straw shed, tobacco shed 36x60 all under cellar; 10 acres of this farm is meadow land thru which flows a spring water stream; land in good state of cultivation, buildings and fences good; location excellent, an abundance of fruit and fine water. About half the money can remain at only 4 1/2 per cent. Price per acre \$170.00

NO. 3 Four fine Building Lots BUILDING on North Barbara Street, MOUNT JOY, 50x200 feet, one a corner lot, excellent location, fine residential surroundings, fronting on a good street, light, gas and water privileges; natural drainage, away from buildings; no more desirable location in the town on which to build. The price is very reasonable.

NO. 4 A beautiful 2 1/2 story frame house in Mount Joy, corner lot 58x168 feet, house was completely remodeled 3 years ago and is in fine condition, large front porch and balcony, 9 rooms, bath, gas, etc., papered throughout, frame stable with room for 2 horses, wagon shed, lot of fruit, sewer, good drainage, very desirable location, trolleys stop at door. Price reasonable for a home like this.

NO. 5 A 16-room frame apartment house, tin roof, HOUSE papered throughout, water, gas, etc., on a corner lot 50x180 feet, near Union National Bank, Main St., Mount Joy, property in good repair, painted one year ago, very beautiful lawn, fruit, good big dry cellar. This is a capital investment as it is now occupied by three families. Will bear close investigation. Immediate possession. Price will astonish you.

NO. 6 I have two fine building LOTS, each 40x197 feet, fronting on the north side of Detwiler Avenue, a 40 ft. street and extending to a 14-ft. alley

in the rear, drainage toward rear, a fine location for building and a good paying investment for farming at low price they are offered.

NO. 7 A fine 2 1/2 story frame double house on a corner lot 60x200 feet. Each side has 7 rooms and an out-kitchen, house was painted only a year ago and in best of repair, slate roof, nice lawn on each side, big gardens, barn just rebuilt entire width of lot, hog pen, chicken houses, smoke house, etc.; dry cellar, pavements and fences in good shape. One side rents for \$8 and other for \$9. Here's an exceptional opportunity for some one wanting a home. Located in the industrial section of Mt. Joy. Price is right.

NO. 8 A lot 40x200 on Main street, Florin, East Donegal Twp., corner lot, public house double house, with summer house, 6 rooms on one side, 5 on the other, now occupied by two families and rents for \$12, two cisterns, one at each end of lot, house in good repair, paint good, dry cellar, pleasant location in business section, frame stable, hog pen, an abundance of fruit, very convenient to new chocolate factory now in course of erection, a good paying investment for some one.

NO. 9 A lot of ground 90x155 A GREAT ft. fronting on Market BARGAIN street, Mount Joy, corner lot with alley on side and rear, has a 2 1/2 story frame double house, 9 rooms on each side with hot and cold water, bath, ranges, gas, etc., dry cellar, property in good repair, each side rents for \$11, large frame stable 26x30 on rear of lot which rents for \$20, suitable for 3 horses and wagons or would make a fine garage, an abundance of fruit, all concrete walks and pavement, property located in the finest residential section in the town. Will sell lot on south side 40x155 separate if desired. I can easily prove a 10 per cent investment at the price I offer. Come look it over.

NO. 10 I have a tract of land FACTORY fronting on the P. R. R. siding in Mt. Joy 107 feet, 147 feet deep at one side and 120 feet deep at other, 145 feet front on alley in rear, located in almost the center of the town, gas, water, and electric privileges very close, land has good drainage, would make a capital location for any kind of an industry. Will sell for any purpose but would much prefer an industry, price will astonish you for this tract. The owner does not need the money and if sold for industrial purposes, entire amount may remain at a low rate of interest.

SALE REGISTER

Thursday, Sept. 2—On the premises in Rapho township, 1/2 mile west of Salunga, a farm of 102 acres with brick house, bank barn and out-buildings by Henry Shenck's Heirs. Minnich, auct. See advertisement.

Saturday, Sept. 4—At his sale and exchange stables, Mount Joy, a carload of Ohio horses and colts consisting of chums, general purpose and good road horses by Mr. Ed. Ream, Frank, auct.

Saturday, Sept. 4—On the premises of Miss Emma Haines on Columbia Avenue, Mount Joy, a large lot of household goods by Mr. John Givens, Vogle, auct.

Saturday, Sept. 11—At 2:30 p. m., three building lots on Poplar street, Mount Joy by Mr. Amos B. Root, Tr.

Saturday, Sept. 11—At 6 P. M. on the premises in Maytown, East Donegal township, a lot of ground with 2 1/2 story frame house, frame stable and outbuildings by William Derr Vogle, auct.

Wednesday, Sept. 15—On the premises in West Hempfield township, along the Lancaster and Marietta turnpike, 1/2 mile east of Marietta, a limestone farm of 43 acres with new brick house, frame barn, tobacco shed, etc. by Henry C. Myers and John A. Conrad, Vogle, auct.

Thursday, Sept. 16—On the premises on the road leading from Florin to Columbia, 1/2 mile south of the former, a farm of 42 acres and 22 perches with improvements. Part No. 2—A tract of 3 acres; Part No. 3—A farm of 97 acres and 45 perches one mile south of Mt. Joy, with improvements, by Elam S. Myers and John S. Myers, administrators of the estate of Christian H. Myers, deceased. Minnich, auct. See advertisement.

Saturday, Sept. 18—On the premises along the Mt. Joy and Marietta pike, 1 1/2 perches of land with frame house, frame stable and outbuildings by the widow and heirs of Christian H. Myers, deceased. Minnich, auct. See advertisement.

Saturday, Sept. 18—On the premises in Florin, at 3 o'clock a lot of ground with 2 1/2 story brick house, and outbuildings, hog pen, etc. Also a lot of ground with 1 1/2 story frame house and outbuildings by D. M. Wolgemuth, jr. Vogle, auct.

Saturday, Sept. 18—On the premises on the road leading from Mt. Joy to Milton Grove, one mile east of the latter place, a tract of land containing 13 acres and 149 1/2 perches with double house, summer house, and outbuilding. Also a 13 acre tract of woodland and a large lot of personal property such as a horse, carriage, sleigh, harness, etc. lot of household goods by Joseph G. Shearer, Frank, auct.

Saturday, Sept. 25—At 3 P. M., on the premises in Florin, East Donegal township, a lot of ground with frame house and outbuildings by Mrs. Aquilla Bailey, Vogle, auct.

Saturday, Oct. 2—On the premises, on the Mt. Joy and Marietta turnpike, 1/2 mile south of Mt. Joy, near the Union School house, a small tract of land with new frame house, new frame stable and outbuildings. Also at the same time and place, wagons, carpenter's tools and a large lot of household goods by Estate of Christian S. Flory, deceased. Frank, auct.

MOUNT JOY MARKETS

These Prices Prevail in This Place on Market Today

Herewith is appended a list of prices that prevailed as supplied by market master Mr. Albert Strickler, at the Mt. Joy Market House this morning.

- Butter, per lb. .32c
Eggs, per doz. .25c
Cup Cheese, 2 cups for .50
Ball Cheese, 3 balls for .10c
Onions, per bunch .50
Cabbage, per head .3 to 6c
New Potatoes, per half pk. 10 to 15c
Apples, per half pk. .30c
Head Lettuce .2 for 60c
Potato Chips, per bag .50
Horse radish, per glass .50
Dressed Chickens each .45c to 65c
Strain, per lb. .24c
Rib Roast, per lb. .24c
Boiling Meat, per lb. .14 to 18c
Ham, per lb. .25c
Frankfurts, per lb. .13c
Beef Liver, per lb. .18c
Calf Liver, per lb. .28c
Pies, each .5 and 16c
Cakes, per doz. .18c
Sweet Corn, per doz. .15c

H. E. Hauer Pays: Lard, per lb. .12c
Potatoes, per bu. .50c
Butter, per lb. .33c
Eggs, per doz. .22c

Brandt & Stehman Pay: Wheat, per bu. \$1.05
Corn, per bu. .88c
Oats, per bu. .45c

Brandt & Stehman Sell: Bran, per hundred \$1.40
Shipstuf, per hundred .150
Mixed feed, per hundred .155
Middlings, per hundred .155
Gluten, per hundred .175
Cotton Seed Meal, 41 per cent. .235
Linseed Meal, per hundred .235
Beet Pulp, per hundred .185
Largo feed, per hundred .165
Mingo feed, per hundred .170
Onion Seed, per hundred .170
Calf Meal, per hundred .250
Timothy Hay, per hundred .190
Straw, per hundred .60c

We Furnish Them We have arranged with one of the largest manufacturers in the United States to supply any thing in the line of lead, slate, copying pencils, with or without erasers, also many designs in pen holders, with anything printed thereon you wish, at prices that will astonish you. They are a crackerjack advertising novelty and we will be pleased to show samples and quote prices to any one interested.

CLARENCE SCHOCK MOUNT JOY, PA. WE ASK PATRONAGE WE GIVE SERVICE LUMBER-COAL

Eventually W. S. WELFLEY FLORIN, PENNA. If you want to buy or sell Real Estate, see Schroll.

OVER LABOR DAY AT Atlantic City CAPE MAY, WILDWOOD Ocean City, Angelsea, Sea Isle City, Avalon, Stone Harbor 16-Day Excursion Saturday, Sept. 4, From Mount Joy EXCURSION TICKETS Good on all regular trains to seashore destination on date of excursion \$4.55 ROUND TRIP Via Delaware River Bridge \$4.30 ROUND TRIP Via Market Street Wharf Stop-over allowed at Philadelphia. Pennsylvania R. R.

AUGUST SALE Greatest Values in Furniture, Carpets and Rugs ever given will be found in this sale; gathered from the best makers in the country. Furniture of absolute dependability in Quality and Workmanship, in Style, Finish and Durability; Our Guarantee for that. You must see the stock to appreciate its beauty and variety. Our furniture buyer spent several weeks at the Grand Rapids and Chicago markets, where he bought the choicest things in the market designed for the Fall season. Much of this is now displayed on our floors. Every piece is minutely inspected before it goes on our floors, and is guaranteed to the limit for honest materials, best workmanship and all-around dependability. Comparison is your insurance. Get prices elsewhere, then come here and compare them with our prices. Our Inexpensive Location Saves Our Customers 110,000 Annually. Particular attention is directed to the Brass Beds. If you are looking for real value in Brass Beds, our store has the most astonishing line ever shown at any August Sale. Westernberger, Maley & Myers LANCASTER, PENNA. 125-131 East King Street

J.C.C. Corsets Prices \$1 to \$6 At the dance or a-driving, for morning wear about the home, for any and every occasion - here you will find the J. C. C. Corset designed specially for your figure. H. E. Hauer Mount Joy, Penna.

Flynets Flynets CORD TEAM NETS, YELLOW & BLACK, \$1 TO \$1.50 LEATHER TEAM NETS, BLACK & TAN, \$2.50 TO \$5 LEATHER CARRIAGE NETS, \$2.50 TO \$3 LEATHER BUGGY NETS, \$2.25 TO \$3.75 84x90 DERBY COOLING BLANKETS, \$1.75 TO \$4 LAP DUSTERS, \$1 TO \$4.50 F. B. GROFF Harness and Horse Clothing, MOUNT JOY, PENNA.

Furniture I will continue the furniture business on the second floor of the Engle Building, with a complete and up-to-date line of all kinds of furniture. Prices are very reasonable. When in need of furniture call and see me. Repairing and Painting a Specialty Special Attention Given to REMODELING ANTIQUE FURNITURE D. H. ENGLE, West Main St., MOUNT JOY, PA.

A Dozen or so Bottles of CHIQUES ROCK ASSORTED SODA WATERS Will Put the Snap and Sparkle Into Your Labor Day Fun If Your Dealer Will Not Supply You Telephone 179 or drop a card to insure the prompt delivery of your order. Price 75c a Case OF 24 BOTTLES FLANAGAN'S The House of Quality 5th & Locust Sts. Columbia, Pa.

CALL FOR THE Conestoga Glue Works' Automobile Truck To Have Your Dead Animals Removed Promptly Highest Cash Prices Paid Lorenz Lamparter PROPRIETOR Bell Phone No. 830 Lancaster, Pa. Ind. Phone No. 647 Advertise In The Bulletin

Jno. E. Schroll Real Estate Broker Mount Joy, Pa.