

### Atlantic City, Cape May Wildwood, Ocean City

Anglesea **SATURDAY** Avalon  
Sea Isle City **16-DAYS TRIPS** Stone Harbor

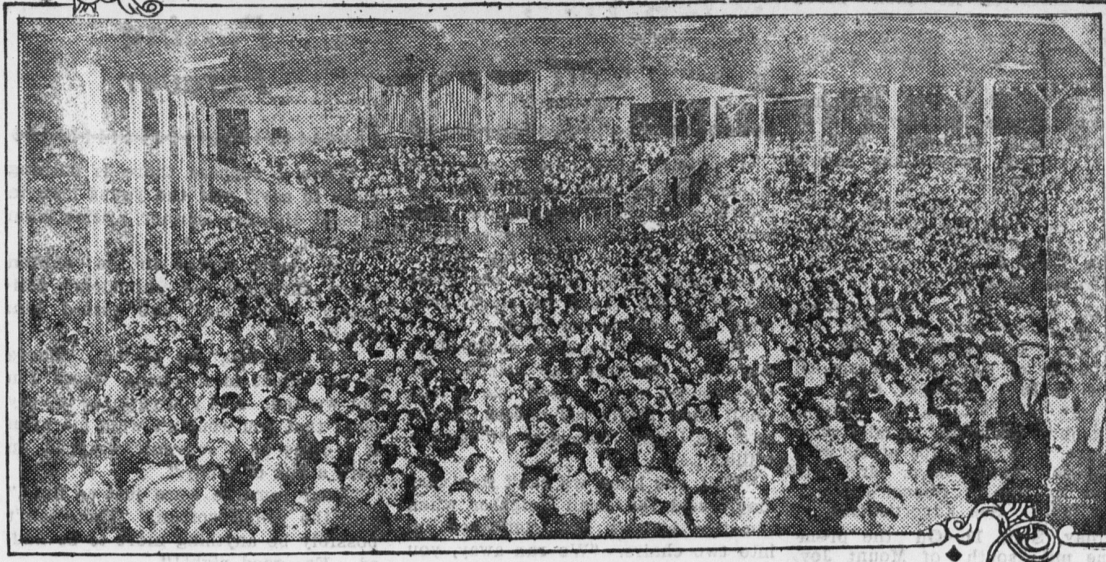
July 31, August 14 and 28, and September 4  
EXCURSION TICKETS  
GOOD ON ALL REGULAR TRAINS TO SEASHORE DESTINATION ON DATE OF EXCURSION.  
\$4.55 ROUND TRIP \$4.30 ROUND TRIP  
VIA DELAWARE RIVER BRIDGE VIA MARKET ST. WHARF  
From Mt. Joy  
STOP-OVER ALLOWED AT PHILADELPHIA

### ATLANTIC CITY

SUNDAY ONE-DAY EXCURSIONS  
August 1, 15 and 29  
ROUND \$2.75 TRIP  
BY SPECIAL THROUGH TRAIN  
Leaving Mt. Joy, 6:51 A. M.  
Returning, leaves Atlantic City (So. Carolina Ave. Sta., 7:05 p. m.)  
Tickets Good Only on Special Train

OCEAN GROVE EXCURSION, AUGUST 28  
For full information consult handbills or nearest Ticket Agent.  
**Pennsylvania Railroad**

### Mammoth Auditorium at Chautauqua, N. Y.



Six presidents of the United States have spoken on this platform. The leaders in American life and thought have here found their most responsive audiences. This auditorium seats 5,300 people comfortably and will accommodate 7,500. Its open air sides afford perfect ventilation and comfort during the hottest days.

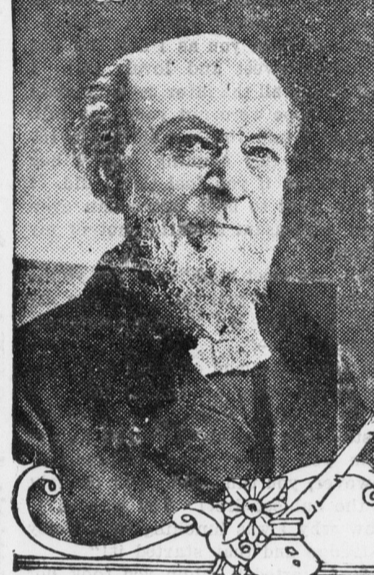
### Chautauqua Institution—World Famous For Forty Years

Popular Resort Combines Fishing and Philosophy, Recreation and Religion, Outdoor Sports and Inspiration.

#### ALL ROUND PROGRAM FOR 20,000 "FRIENDLY FOLKS."

and yearly donations from generous friends. Its summer schools and reading courses are also furnished at actual low cost figures.  
Twenty thousand "friendly folks" make an average population at Chautauqua. They come from all the states of the Union. They come from China and Japan, from South America and from Europe, where Chautauqua, N. Y., has the reputation of an "American Mecca."  
Chautauqua Life is "Different." One can be as quiet at Chautauqua as one chooses or as busy all day long. The long program of lectures by really great men, the diversity of the musical program and the platform entertainments by world celebrated artists will

ful consciousness of life and its purposes which would give direction to each individual.  
Nowhere in the world can so many great minds be met with in the same short space of time as at Chautauqua during the huge sixty-day program, which occupies the summer season through July and August. Without exception the greatest statesmen, the best known authors, the wisest educators, the foremost politicians, the most famous travelers and the most active propagandists have all found a place there and a friendly welcome to Chautauqua's platform.  
The great amphitheater, which seats 5,300 people comfortably and can accommodate 7,500, has been the scene of many an important address dealing with the greatest issues of the day. Six presidents of the United States have graced this platform and praised the institution as the great world's forum that it is.  
The acoustics of this huge outdoor amphitheater are well known to speakers of every nationality. The open sides give perfect ventilation and comfort during even the hottest days of the year. Five years ago a magnificent Massey organ, the gift of the manufacturer and worth at least \$30,000, was installed.  
To have been a member of this Chautauqua audience is to have enjoyed a tremendous privilege. To have been a speaker on this greatest of the world's public forums is a distinction which thousands covet and but a comparative few enjoy.  
Expensive "Talent."  
More money is spent on "talent" for Chautauqua's eight week program than would be suspected by the 50,000 people who get its full benefits for the small gate fee of \$8 per season. The budget runs into the tens of thousands. But the very best is thereby obtained—statesmen fresh from their duties at Washington, the various state capitals, authorities on social and professional lines from the big universities, musicians just off tour, preachers whose names are household words and entertainers of the highest grade.  
Very often there are forty events or more scheduled daily. And at least 120 lectures and 200 popular concerts are given during the period, so that every type of mind and individual taste may find something of information, education or inspiration to carry home for the coming year.  
Chautauqua life brings speakers and audience close together with its air of comfort and informality.



BISHOP JOHN H. VINCENT.

The venerable founder of big summer assembly at Chautauqua, N. Y., whose foresight, humanity and energy developed an idea which has molded the national life.

satisfy the desires of every type of mind. The daily offering of outdoor sports, such as golf and tennis and canoeing, bathing and boating of all kinds, track events, trampolining and riding and driving, give free play for those inclined to the athletic. The work of the summer schools occupies 2,400 adult students and runs the gamut from basketry to music through 300 separate courses under the best available teachers. Those with the religious bent will find many worth while conferences and lecture courses.

#### America's Greatest Forum.

Chautauquians—and there are millions of them—live a purpose in life. The ideal, which John H. Vincent, the founder, so sturdily cultivated in his people, was the balanced life, a strong body with a strong mind and a spiritual life.  
Edith Wynne Matthison, will give a series of recitals from his written plays, "The Servant in the House," "The Terrible Meek," etc.  
Special addresses will also be given by Thomas Mott Osborne, warden of Sing Sing penitentiary, noted for his advanced prison methods; Hamilton Wright Mabie, literary editor of Outlook Magazine; Harold J. Howland, associate editor of Independent Magazine; Rabbi Stephen S. Wise of New York; Amos P. Wilder, Dr. Katharine B. Davis, New York's commissioner of correction, and Superintendent William M. Davidson of the Pittsburgh public schools.  
The Chautauqua Players, under the lead of M. Benedict Papot, "the leading amateur actor in America," will present a series of well known plays, one each week. Music will be represented by the Chautauqua chorus of 500, under Mr. Hallam, and by the famous Russian Symphony Orchestra, with William Wade Hinshaw of the Metropolitan Opera Company and Ernest Hutcheson, noted pianist, as soloists.  
The Religious Features.  
The religious features of the program will be in the hands of Deana Shaller Mathews, president of the Federal Council of Churches and head of the Chicago Theological School at the University of Chicago. He has just returned from a special mission to Japan in the interests of international peace. Such figures as Dr. Frank W. Gunsulius, president of Armour Institute; Bishop Charles D. Williams, Protestant Episcopal bishop of Michigan; Bishop John H. Vincent, chancellor of Chau-

tauga; Bishop Francis J. McConnell of Denver and Dr. Samuel B. McCormick, University of Pittsburgh, will also be on the program for a series of talks.  
Special weeks this summer will be devoted to particularly live topics. Justice and the courts will be an open question for some 500 lawyers to wrangle over, under the leadership of Justice William L. Ransom of New York City's city court. George W. Alger will be featured with his series of lectures, based on matter recently published in the World's Work Magazine. And Dr. Katharine Bement Davis, New York city commissioner of correction, will speak on "Prison Reform."  
Temperance week will bring a live discussion of the national prohibition campaign. Ex-Governor Malcolm R. Patterson of Tennessee will talk "Why I Changed Front on the Liquor Question," and Hon. J. Denny O'Neil of Pittsburgh will speak on "Prohibition From the Business Man's Point of View." Many other prohibition and temperance speakers will attend, and William Jennings Bryan has indicated his desire to be present.

#### Week of the Great War.

A week devoted to a study of the "War of Eleven Nations in Europe" will find several speakers of authority who are just back from the front. Dr. Lincoln Wirt, special representative for the World Peace Foundation and the Boston Herald, will return to make his first public report at Chautauqua. Norman Angell, whose books showing the logical fallacy of war upset modern ideas as to its necessity, will expand his widely quoted views. Dr. Herbert Adams Gibbons, special writer for the New York Herald and author of two recent books dealing with "Changes in Europe," will conduct summer classes and lecture on the subject. Director Arthur Bestor will describe Europe's war lords from his recent intimate studies of their personalities, and Sanford Griffith, who has just returned from Belgium, where he served as "special field investigator," will describe the horrors of war and life at the front as he saw it.  
Community affairs will be discussed in every possible connection during a week in which sessions will be led by Mr. E. J. Ward, Wisconsin's state adviser on civic development, and the like. Social centers in the city and public school centers in the country will be particularly featured. Internationalism and Christianity will be the final week, and the theme will be "What is the Duty of Christianity as a Power in the Present Military Crisis?"  
Dr. Frank Gunsulius, Dr. Charles E. Jefferson, Bishop James W. Bashford, Dr. Lemuel C. Barnes, Hon. Amos P. Wilder and Hon. John Lind, who was President Wilson's personal representative in Mexico, will be among the speakers.

#### WORLD'S GREATEST PUBLIC FORUM—CHAUTAUQUA, N. Y.

Sixty Day Assembly Will Have Big Speakers and Mammoth Program.  
The leaders in American life and thought have always found the Chautauqua platform hospitably open to them, and there have been very few of the nation's great statesmen, authors, educators, travelers and propagandists who have not appeared before Chautauqua assembly at some time during the last forty years.  
This coming season a noted and varied array of such talent is offered:  
Mary Austin, world famous as a young Jewish author and champion of the immigrant, will lecture. E. J. Ward, Wisconsin's state adviser on civic development, will direct a week's work on "Community Service." Henry Turner Bailey, America's greatest exponent of art in every day life, just returned from his task of awarding prizes at the Panama-Pacific Exposition, will spend the summer at Chautauqua.  
Mrs. Percy V. Pennebaker, president of the General Federation of Women's Clubs, will give general addresses and also conduct special exercises for her constituency. Charles Rann Kennedy and his wife, the well

known actress, Edith Wynne Matthison, will give a series of recitals from his written plays, "The Servant in the House," "The Terrible Meek," etc.  
Special addresses will also be given by Thomas Mott Osborne, warden of Sing Sing penitentiary, noted for his advanced prison methods; Hamilton Wright Mabie, literary editor of Outlook Magazine; Harold J. Howland, associate editor of Independent Magazine; Rabbi Stephen S. Wise of New York; Amos P. Wilder, Dr. Katharine B. Davis, New York's commissioner of correction, and Superintendent William M. Davidson of the Pittsburgh public schools.  
The Chautauqua Players, under the lead of M. Benedict Papot, "the leading amateur actor in America," will present a series of well known plays, one each week. Music will be represented by the Chautauqua chorus of 500, under Mr. Hallam, and by the famous Russian Symphony Orchestra, with William Wade Hinshaw of the Metropolitan Opera Company and Ernest Hutcheson, noted pianist, as soloists.  
The Religious Features.  
The religious features of the program will be in the hands of Deana Shaller Mathews, president of the Federal Council of Churches and head of the Chicago Theological School at the University of Chicago. He has just returned from a special mission to Japan in the interests of international peace. Such figures as Dr. Frank W. Gunsulius, president of Armour Institute; Bishop Charles D. Williams, Protestant Episcopal bishop of Michigan; Bishop John H. Vincent, chancellor of Chau-

tauga; Bishop Francis J. McConnell of Denver and Dr. Samuel B. McCormick, University of Pittsburgh, will also be on the program for a series of talks.  
Special weeks this summer will be devoted to particularly live topics. Justice and the courts will be an open question for some 500 lawyers to wrangle over, under the leadership of Justice William L. Ransom of New York City's city court. George W. Alger will be featured with his series of lectures, based on matter recently published in the World's Work Magazine. And Dr. Katharine Bement Davis, New York city commissioner of correction, will speak on "Prison Reform."  
Temperance week will bring a live discussion of the national prohibition campaign. Ex-Governor Malcolm R. Patterson of Tennessee will talk "Why I Changed Front on the Liquor Question," and Hon. J. Denny O'Neil of Pittsburgh will speak on "Prohibition From the Business Man's Point of View." Many other prohibition and temperance speakers will attend, and William Jennings Bryan has indicated his desire to be present.

known actress, Edith Wynne Matthison, will give a series of recitals from his written plays, "The Servant in the House," "The Terrible Meek," etc.  
Special addresses will also be given by Thomas Mott Osborne, warden of Sing Sing penitentiary, noted for his advanced prison methods; Hamilton Wright Mabie, literary editor of Outlook Magazine; Harold J. Howland, associate editor of Independent Magazine; Rabbi Stephen S. Wise of New York; Amos P. Wilder, Dr. Katharine B. Davis, New York's commissioner of correction, and Superintendent William M. Davidson of the Pittsburgh public schools.  
The Chautauqua Players, under the lead of M. Benedict Papot, "the leading amateur actor in America," will present a series of well known plays, one each week. Music will be represented by the Chautauqua chorus of 500, under Mr. Hallam, and by the famous Russian Symphony Orchestra, with William Wade Hinshaw of the Metropolitan Opera Company and Ernest Hutcheson, noted pianist, as soloists.  
The Religious Features.  
The religious features of the program will be in the hands of Deana Shaller Mathews, president of the Federal Council of Churches and head of the Chicago Theological School at the University of Chicago. He has just returned from a special mission to Japan in the interests of international peace. Such figures as Dr. Frank W. Gunsulius, president of Armour Institute; Bishop Charles D. Williams, Protestant Episcopal bishop of Michigan; Bishop John H. Vincent, chancellor of Chau-

tauga; Bishop Francis J. McConnell of Denver and Dr. Samuel B. McCormick, University of Pittsburgh, will also be on the program for a series of talks.  
Special weeks this summer will be devoted to particularly live topics. Justice and the courts will be an open question for some 500 lawyers to wrangle over, under the leadership of Justice William L. Ransom of New York City's city court. George W. Alger will be featured with his series of lectures, based on matter recently published in the World's Work Magazine. And Dr. Katharine Bement Davis, New York city commissioner of correction, will speak on "Prison Reform."  
Temperance week will bring a live discussion of the national prohibition campaign. Ex-Governor Malcolm R. Patterson of Tennessee will talk "Why I Changed Front on the Liquor Question," and Hon. J. Denny O'Neil of Pittsburgh will speak on "Prohibition From the Business Man's Point of View." Many other prohibition and temperance speakers will attend, and William Jennings Bryan has indicated his desire to be present.

known actress, Edith Wynne Matthison, will give a series of recitals from his written plays, "The Servant in the House," "The Terrible Meek," etc.  
Special addresses will also be given by Thomas Mott Osborne, warden of Sing Sing penitentiary, noted for his advanced prison methods; Hamilton Wright Mabie, literary editor of Outlook Magazine; Harold J. Howland, associate editor of Independent Magazine; Rabbi Stephen S. Wise of New York; Amos P. Wilder, Dr. Katharine B. Davis, New York's commissioner of correction, and Superintendent William M. Davidson of the Pittsburgh public schools.  
The Chautauqua Players, under the lead of M. Benedict Papot, "the leading amateur actor in America," will present a series of well known plays, one each week. Music will be represented by the Chautauqua chorus of 500, under Mr. Hallam, and by the famous Russian Symphony Orchestra, with William Wade Hinshaw of the Metropolitan Opera Company and Ernest Hutcheson, noted pianist, as soloists.  
The Religious Features.  
The religious features of the program will be in the hands of Deana Shaller Mathews, president of the Federal Council of Churches and head of the Chicago Theological School at the University of Chicago. He has just returned from a special mission to Japan in the interests of international peace. Such figures as Dr. Frank W. Gunsulius, president of Armour Institute; Bishop Charles D. Williams, Protestant Episcopal bishop of Michigan; Bishop John H. Vincent, chancellor of Chau-



### Shrewd Housewives Will Hurry to Secure Their Wants From This August Blanket Sale

Commencing Saturday, Aug. 21 For One Week Only

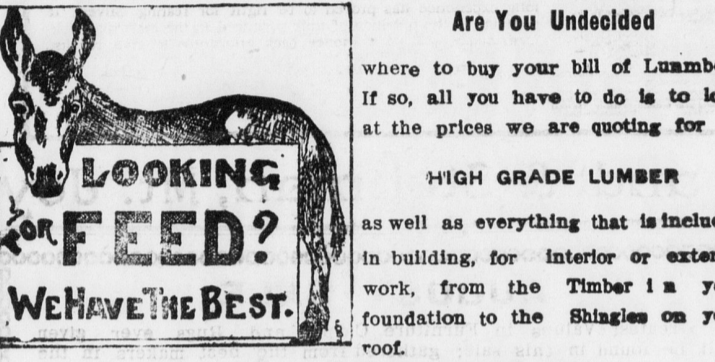
Many women have asked us if they could save any money by purchasing their winter blankets early. Our new blankets had not then arrived, but now they are here, and a finer lot of blankets would be hard to find. For this one week, we have marked special prices on several lots of blankets. These reductions will mean great savings to those women who anticipate their winter needs during this sale.  
Hotel and Boarding House Keepers would do well to select from these offerings.  
\$1.00 Cotton blankets, 85c pr. In double bed size, tan color only. Bound with neat mohair binding.  
\$1.25 Cotton Bed Blankets, 95c pr. Full size. Bound with a neat mohair binding.  
\$1.50 Cotton Blankets at \$1.25 pr. Large enough for any bed. In grey, tan or white.  
\$2.50 Fancy Plaid Blankets, \$1.89 pr. Large size. In grey and white, blue and white, pink and white and tan and white plaids.  
At \$2.00 we offer blankets that we consider the greatest value ever offered. They are full size and weigh 4 1/2 lbs. In either grey or white, with colored borders. Mohair binding, same color as the borders.  
At \$2.50—Blankets of part wool, in grey and white, with colored borders. Double bed size.  
At \$3.00—Blankets of half wool, weighing 5 1/2 lbs. Full size in grey only.  
At \$3.50—White Wool Blankets, that are almost all-wool, and worth at least a dollar more. Have blue and pink borders, bound with pretty mohair binding.  
At \$5 and \$10 we are showing the finest display of the better grade Blankets, in part wool and all wool, that we have ever shown. They are here in white, greys and fancy plaids.

MONEY-SAVING PRICES ON BED SPREADS  
At \$1.00 we offer the finest Bed Spread that we have ever offered at this price. You must see it to appreciate this fact.  
\$2.50 Satin Marseilles Bed Spreads at \$1.98 each. Handsome patterns and of a most desirable weight. A splendid spread at this little price.  
\$4.50 Satin Marseilles Bed Spreads at \$3.00. Don't fail to see these spreads at this reduced price.  
Colored Bed Spreads, in navy, brown, light blue and pink—\$1.00, \$1.50 and \$2.00.  
10c Bleached Shaker Flannel at 8c yr. 32 inches wide and extra heavy at this price.  
Bleached Shaker Flannel, 5c yd. 27 inches wide. Quantity limited.  
Ready-Made Sheets, Pillow Cases and Bolster Cases  
Bleached Sheets at 29c, 55c, 59c, 62c, 75c and 80c  
Bleached Pillow Cases at 10c, 12 1/2c, 15c, 17c and 20c  
Bleached Bolster Pillows at 22c, 30c and 35c. Hemstitched at 43c, 48c and 50c  
Bleached Hemstitched Pillow Cases at 17c, 22c and 25c  
Bleached Sheet, full width at 23c, 25c, 28c and 33c  
Pillow case Muslin at 11c, 13c, 15c and 18c yd.

### NEW YORK STORE LANCASTER, PA.

If You are troubled with heartburn, gases and a distressed feeling after eating take a **Rexall Dyspepsia Tablet** before and after each meal and you will obtain prompt relief. Sold only by us, 25c  
E. W. Garber.  
Our Ads Bring Results—Try It.  
Our Ads Bring Results—Try It.  
Our Ads Bring Results—Try It.  
Our Ads Bring Results—Try It.

Subscribe for the Mt. Joy Bulletin.



Are You Undecided where to buy your bill of Lumber? If so, all you have to do is to look at the prices we are quoting for HIGH GRADE LUMBER as well as everything that is included in building, for interior or exterior work, from the Timber in a your foundation to the Shingles on your roof.  
**E. S. MOORE**  
Dealer in  
**Coal, Lumber, Grain.**  
FEED, HAY, STRAW, SLATE, SALT, CEMENT AND FERTILIZER  
A large stock of Feed constantly on hand. Highest cash price paid for grain.  
Estimates of Lumber and Mill Work a Specialty  
**FLORIN, PENNA.**

### To Our Subscribers

THERE have been many changes made in RURAL DELIVERY ROUTES, effective July 1. We would kindly ask our patrons to send in their new address, and also the old address. We will be unable to know what individual changes have been made owing to the complicated rearrangements of various routes over entire Northern Lancaster County

When You Put up Jelly simply pour a coating of melted Parowax (pure, refined paraffine) over the contents of each glass. This does away with old-fashioned tying and covering with tin lids. Four big cakes of Parowax, 10 cents, everywhere.  
The Atlantic Refining Company

**Parowax**

**Automobile Men Listen**  
We have opened a first-class Garage and Repair Shop in the M. B. Hiestand Building on Marietta Street, Mount Joy, where we are prepared to do  
All Kinds of Repair Work  
Rebuilding, Repainting, Remodeling  
Etc. All work must be satisfactory and you will find our charges very reasonable.  
WE CARRY A COMPLETE LINE OF FORD PARTS.  
AGENTS FOR THE WELL KNOWN FIRESTONE TIRES  
We will be pleased to have you give us a trial.  
**SNYDER & METZLER**  
MARIETTA ST., MOUNT JOY, PA.

**Rexall Dyspepsia Tablets**  
Believe Your Indigestion  
W. GARBER

**CHICHESTER'S PILLS**  
THE DIAMOND BRAND  
Ladies! Ask your Druggist for Chichester's Diamond Brand Pills in Red and Gold metallic boxes, sealed with Blue Ribbon. Take no other. Buy of your Druggist. Ask for CHICHESTER'S DIAMOND BRAND PILLS, for 25 cents more as listed below. Always Reliable. SOLD BY DRUGGISTS EVERYWHERE.  
Read the Bulletin

Wasn't From Missouri that was fully covered by insurance. The widow thinks the editor wrote the obituary that way because the lamented partner of her joys and sorrows owed him five years subscription.

Believe in Good Roads, Too The annual report of Hon. A. S. Kreider, president of the Mt. Gretna Campmeeting Association, was presented at a meeting of the Association on Monday. The report shows that over \$10,000 was handled by the Association in the past year and that \$1,000 was expended to better

roadways and water courses.

Picnic a Big Success The combined Sunday schools of Maytown held a picnic at Chickies Park last Wednesday. It was the largest outing held this season and amusements were provided for everybody. Automobiles, hay ladder wagons and other conveyances were used to bring the people from Maytown to Marietta, where special cars were taken for the park.

Not all women who are proud of their figures are good calculators.

Not all women who are proud of their figures are good calculators.

Not all women who are proud of their figures are good calculators.

Not all women who are proud of their figures are good calculators.

Not all women who are proud of their figures are good calculators.

Not all women who are proud of their figures are good calculators.

Not all women who are proud of their figures are good calculators.

Not all women who are proud of their figures are good calculators.

Not all women who are proud of their figures are good calculators.

**Firestone Announcement**

This is to announce that **H. S. NEWCOMER** MOUNT JOY, PENNA. will supply motor car owners of this community with **Firestone Automobile and Motorcycle Tires, Tubes and Accessories**

An ever growing demand for Firestones in this locality and every locality where quality is appreciated has made it necessary to establish headquarters here.

Last year the Firestone Factory—already the largest exclusive tire plant in the world—was still further enlarged. Output increased 78% to meet the demand. And the factory and the demand are still growing.

Firestone Net Prices to Car Owners			
	Case	Case	Red
	Road & Travel	Non-skid	Table
30x3 1/2	\$ 9.40	\$10.55	\$2.20
30x3 1/4	11.90	13.55	2.60
32x3 1/2	13.75	15.40	2.70
34x3 1/2	19.95	22.30	2.90
34x3 1/4	27.30	30.55	4.80
36x3 1/2	2.70	32.15	3.00
37x3 1/2	35.55	39.80	5.95
38x3 1/2	46.00	51.50	6.75

Call at Firestone Headquarters Above for Biggest Tire Value

**Firestone Tire & Rubber Co.**  
"America's Largest Exclusive Tire and Rim Makers"  
Akron, Ohio—Branches and Dealers Everywhere