

H. Miller

WATCHES
Clocks, Jewellery
and Spectacles

Repairing in all its Branches.
Also electrical goods of all
kinds.

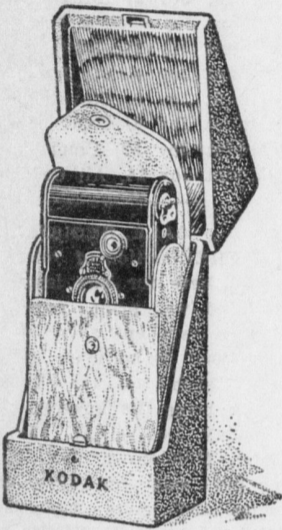
Electric light globes sold & Ex-
changed for Edison Electric
Company.

Report all Electric light trou-
ble to me which will have
prompt attention.

East Main street
MOUNT JOY, PENNA

IF IT ISN'T AN EASTMAN IT
ISN'T A KODAK
quality and richness that appeal
to the most fastidious

For Christmas and All The Happy
Days to Come



THE KODAK GIFT CASE

Containing Vest Pocket Kodak
with Kodak Anastigmat Lens. Hand
carrying case of imported satin fin-
ish leather in a shade of soft brown
that is in perfect harmony with the
deep blue of the silk lined container.

PRICE \$13.00

Other Kodaks from \$6.00 to
\$74.00 Brownie Cameras, \$1 to
\$12.00

Sold by

W. B. BENDER
BARBER

East Main St., Mount Joy, Pa.

WE HAVE EVERYTHING FOR THE
AMATEUR PHOTOGRAPHER

CONESTOGA TRACTION CO.

LANCASTER, ROHRERTOWN, MT.
JOY AND ELIZABETHTOWN

Division

Schedule in effect January 1, 1914.
Westward—Leave Lancaster, 4:00, 5:15,
6:15, 7:15, 8:15, 9:15, 10:15, 11:15 a. m.;
12:15, 1:15, 2:15, 3:15, 4:15, 5:15, 6:15, 7:15,
8:15, 9:15, 10:15 p. m.
Eastward—Leave Elizabethtown, 5:45,
6:45, 7:45, 8:45, 9:45, 10:45, 11:45 a. m.;
12:45, 1:45, 2:45, 3:45, 4:45, 5:45, 6:45, 7:45, 8:
45, 9:30, 11:15 p. m.; 12:30 a. m.
Additional car daily except Sunday
leaves Mount Joy at 6:15 a. m., arriving
at Lancaster at 7:15 a. m.
Saturdays cars every half hour leaving
Lancaster from 6:15 a. m. to 7:15 p. m.;
leaving Mount Joy from 7:15 a. m. to
8:15 p. m.
On Saturdays a car will leave Lancas-
ter at 9:15 and 10:15 p. m.; leave Eliza-
bethtown at 10:45 and 11:45 p. m.
Sundays, cars every half hour from
May 1 to Nov. 1, leaving Lancaster
from 7:15 a. m. to 7:15 p. m.; leave Mt.
Joy from 8:45 a. m. to 8:15 p. m.
Sundays, cars every half hour from
Nov. 1 to May 1, leaving Lancaster
from 7:15 p. m. to 7:15 p. m.; leaving
Mount Joy from 8:15 p. m. to 8:15 p. m.
Sundays, first car leaves Lancaster at
6:15 a. m.; leaves Elizabethtown 7:30 a.
m.
(c) Daily except Saturday.

Advertisement for Pure Spring Water Ice, J. N. Stauffer & Bro., Mount Joy, Penna.

Advertisement for H. J. Williams Tonsorial Parlors, Mount Joy.

Advertisement for W. M. Hollowbush, Notary Public, Mount Joy.

D. B. KIEFFER & CO'S.

12th Annual Closing Out
Sale for 1914
HORSES MULES & COLTS

On Friday, December 4th, 1914

At 9:30 A. M. at the Farmers' Hotel, M. Snyder, Proprietor.

At Middletown, Pa.

We will sell the following Live Stock—100 head of best ship-
ped Western Horses and Colts, shipped direct by W. M. Grove,
who advises us that he has taken the greatest care in selecting
this bunch of horses and colts, and has bought only (the best
that grow.) The kind that have the size, shape, bone, muscle
and conformation to themselves, and will mature write and make
heavy drafters, all purpose horses, farm chunks, carriage horses
and drivers. These colts range in age from 1 to 5 years and
weigh from 1,000 to 1,400 pounds each.

100 to 150 head of acclimated commission horses and mules,
consisting of the good, big finished draft horses, general business
horses, farm chunks, single line leaders, all purpose horses, car-
riage horses, livery horses, fancy drivers and speedsters.

Also a lot of high dollar horses The 57 variety kind of all
classes. These horses range in age from 5 to 12 years and have
them weighing up to 1,600 pounds each. 50 head of good, big
mules, consisting of mated teams, single mules, single line leaders,
work slaves and unbroken mules. These mules range in age from
2 to 12 years. By run of commission horses and mules. One well
drilled outfit, complete.

Sale to commence at 9:30 A. M. on Friday, December 4, 1914,
when conditions of sale will be made known by

D. B. Kieffer & Co.

One Cent Per Gallon
Farmers, Stock Dealers and Poultry Fanciers

Do not delay to thoroughly disinfect your stables, hog pens and
poultry house ere it is to late. It is a panacea for all the ills
peculiar to the horse, cattle, hogs and poultry. When properly di-
luted with water it costs a trifle over one cent per gallon. Do not
delay to protect your stock, and some dollars by spending a trifle.
Ask for information and prices on

ZENO DIP, KRESO DIP
and
STRASBURG SANITARY FLUID

Chandler's Drug Store

SUNDAY HOURS 8 TO 9 AND 5 TO 7.
West Main St. Mount Joy, Pa.

Special Sale of Perfumes

THERE WILL BE A SPECIAL SALE OF PERFUMES COM-
MENCING SATURDAY, NOV. 28, AND WILL CONTINUE UNTIL
SATURDAY, DEC. 5. ALL 50c. PERFUME WILL POSITIVELY
BE SOLD AT 30c. AN OUNCE. THIS IS YOUR OPPORTUNITY
TO GET THE BEST PERFUMES ON THE MARKET AT A VERY
REASONABLE PRICE.

E. W. GARBER
THE REXALL STORE
EAST MAIN ST. MOUNT JOY, PA.

Chase Blankets Chase Blankets
ALL-WOOL HORSE BLANKETS CARRIAGE ROBES, AUTO
ROBES, STABLE BLANKETS at prices to suit the purchaser,
The name CHASE on a blanket is the same as the name
STERLING on silver.
GOODS CHEERFULLY SHOWN

FRANK B. GROFF, Mount Joy

DRINK
CHIQUES ROCK
SODA WATER

EUDONA—The New Sachet Pow-
der—will give your linen, writing pa-
per, etc., a delightful fragrance. A
wholesome spicy perfume that can-
not fail to please because everything
that enters into its composition is
pleasant. A generous packet will
be mailed on receipt of 10c (coin
preferred). H. R. Vedder, Audobon,
N. J., dec.1-3ma.

NEW T'OWN TROLLEY LINE
Will Connect the Chocolate Town
with Elizabethtown Ere Long

Ahead of expectations is the pro-
gress of the new trolley line be-
tween Hershey and Elizabethtown in
Lancaster County. Already the work
has reached Deodate which is more
than one-half the distance between
the two points. The construction on
the new road is in keeping with the
quality of the other Hershey transit
lines. Probably the best trolley road
in Pennsylvania is the Hershey line
between Hershey and Lebanon. The
new line will be its equal if not its
superior. The grading is through;
the rails are heavy and the whole
proposition is on a high scale, so
that the road will invite smoothness
and speed. At Elizabethtown, which
is a prosperous borough—the tracks
of the Hershey line will run directly
to the tracks of the trolley line to
Lancaster. From Hershey to Eliza-
bethtown is ten miles and from Eliza-
bethtown to Lancaster is nineteen
miles. It is expected that a schedule
of ninety minutes and perhaps less
will be maintained between Hershey
and Lancaster.

At present the usual route from
Hershey to Lancaster is to Harris-
burg 13 miles and then by rail to
Lancaster 36 miles, or 49 miles in
all. The new route will cut down
the total 20 miles. The time may
be made shorter because railroad
may be used by the passenger from
Elizabethtown to Lancaster. But the
effort will be to develop the trolley
traffic. The line runs through a
well-settled and prosperous country
and the people are deeply interest-
ed in the coming of the new facilities.

Two pay-as-you-enter cars have
been ordered from the J. D. Brill
Company of Philadelphia and other
rolling stock will be added. The
cars are of the latest type, with
Westinghouse equipment and all the
merits for speed and easy riding.
It is a very busy winter for Gen-
eral Manager J. R. Kreider and for
Civil Engineer H. N. Herr. Mr. Herr
has moved his engineering corps
from the rooms in the Hershey
Men's Club to the new and spacious
quarters in the Hershey Administra-
tion Building where they have not
only handsome accommodations, but
much better light—Hershey Press.

SCHOOL DIRECTORS' CONVEN-
TION
Will be Held at the Millersville State
Normal School Tomorrow

The Lancaster County Directors'
association will hold its 28th annual
convention on Thursday, December
3, in the chapel of the Millersville
State Normal School. The opening
session will begin at 9:30 o'clock
and there will be an afternoon ses-
sion. An interesting program has
been arranged.

Among the special questions for
discussion will be the following:
What can be done to give the
rural child advantages equal to those
enjoyed by the child in the larger
towns.
What can be done to improve the
sanitary conditions of the rural
school.

Do directors give enough attention
to the play grounds?
Do the schools of to-day meet the
needs of the people as well as did
the schools of 25 or 50 years ago?

Do the directors do enough to
make the school grounds attractive?
What constitutes good taste in
school room decoration. What col-
ors should be used?

For the best light what kind of
shades should be used at the win-
dows?
Should school buildings be thrown
open for debates, singing schools and
similar gatherings.

Are our quarantine laws wise?
To what extent should directors
be influenced by public sentiment?
Are directors to any extent re-
sponsible for the public sentiment
found in a district?
Teacher's boarding place.

Should agents be permitted to sol-
icet subscriptions at the school
house?
The water supply for drinking
purposes.

Child Meets With a Mishap
William Schroll, aged six years, a
son of Wilson Schroll, formerly of
this place, now living at Columbia,
was injured by a fall one day last
week. The boy is a cripple, his left
leg being almost helpless from an
attack of infantile paralysis. He
uses crutches to get around. In
front of the Happy Hour Theatre,
on Locust street, he slipped and fell.
His right shoulder struck a step,
breaking the collarbone. Dr. S. S.
Mann took the little fellow home in
his automobile and reduced the
fracture.

Whose Were They?
Last Wednesday Constable Steiger-
wald of Lancaster, found an aban-
doned and driverless team on the
New Holland pike, east of that city.
Upon investigating he found it
contain five bags containing thirty
chickens and six ducks, supposed to
have been stolen in the vicinity of
Mount Joy. The constable tele-
phoned to this office but thus far we
have not heard of any one around
here that is minus poultry answer-
ing the above description.

Farmers Column
VERY VALUABLE INFORMATION
FOR THE FARMERS

WATT and SHAND
Corner Square and E. King Sts.
Lancaster, Penna.

A Magnificent
Christmas Gift

RELIANCE
Sewing Machine

Not too early to choose it. Could you give anything more
useful to your wife, mother or sister? It's the best in the world,
at half the price of others supposed to be nearly as good. Guar-
anteed ten years. Set of the famous Greist nickel steel attach-
ments free with each machine. All the latest improvements. \$2.00
down puts one in your home immediately. \$1 a week pays for it.

Visit the Sewing Machine Section and have one of our ex-
perts show you its merits.

- Challenge Machine, \$15.50
- Reliance Machine, \$19.50
- Reliance Machine, \$21.50
- Reliance Rotary, \$29.50
- Reliance Rotary, \$32.50
- Security, \$32.50
- EXTRA SPECIAL — HHOUSEHOLD MACHINES, \$12.50
- AGENTS' PRICE, \$25.00

While they last, we are going to dispose of them at \$12.50.
All over this country they are sold at \$25.00. Easy-running ma-
chine, which we guarantee to be O. K. or your money back.

Winter Millinery



Just received an exceptionally fine and stylish line of PLUS
AND VELVET HATS for ladies and children. Also all the NEW-
EST STYLES IN FEATHERS AND VELVET FLOWERS at LOW-
est Prices.

FLORA DRABENSTADT
East Main Street Mount Joy, Pa.

Why Pay High Prices

FOR FURNITURE, CARPETS, RUGS AND DRAPERIES WHEN
THIS STORE OFFERS YOU THE CHEAPEST TYPES AND
STYLES AT A SAVING THAT IS WORTH WHILE YOUR
CONSIDERATION

See this wonderful assortment of beautiful new goods and se-
cure your share of the savings of an inexpensive location.
This huge store is brimful of selections, both practical and
artistic, for the complete furnishing of every room in the home.
Comparison and selection are very much simplified by the fact
that we offer you the largest assemblage of up-to-date Furniture,
Carpets, Rugs and Draperies in the city.

As we make home furnishing our sole business, we are natural-
ly in a position to give you the best services at the lowest prices
obtainable.

Westenberger, Maey & Myer
125-131 East King St. LANCASTER

AUTOMOBILE SUPPLIES

Automobile Casings which averaged 6,700 miles
When in TROUBLE, A STEADY VULCANIZING
your service.

General OVERHAULING times rapidly ap-
spective of name or make, I will make a back s
efficiency.

Barr's Repair Shop &
NEW HAVEN ON MAIN MO
CALL IDENT PHO