

S. H. Miller

WATCHES
Cloeks, Jewellery
and Spectacles

Repairing in all its Branches.
Also electrical goods of all
kinds.

Electric light globes sold & Ex-
changed for Edison Electric
Company.

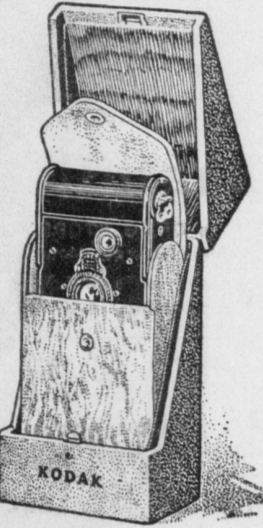
Report all Electric light trou-
ble to me which will have
prompt attention.

East Main street
MOUNT JOY, PENNA

IF IT ISN'T AN EASTMAN IT
ISN'T A KODAK

A quality and richest that appeal to
the most fastidious

For Christmas and All The Happy
Days to Come



THE KODAK GIFT CASE

Containing Vest Pocket Kodak,
with Kodak Anastigmat Lens. Hand
carrying case of imported satin
finish leather in a shade of soft brown
that is in perfect harmony with the
deep blue of the silk lined container.

PRICE \$13.00

Other Kodaks from \$6.00 to
\$74.00 Brownie Cameras, \$1
to \$12.00

Sold by

**W. B. BENDER
BARBER**

East Main St., Mount Joy, Pa.

WE HAVE EVERYTHING FOR THE
AMATEUR PHOTOGRAPHER

CONESTOGA TRACTION CO.

LANCASTER, ROHRERSTOWN, MT.
JOY AND ELIZABETHTOWN
DIVISION

Schedule in effect January 1, 1914.

Westward—Leave Lancaster, 4:00,
5:15, 6:15, 7:15, 8:15, 9:15, 10:15,
11:15 a. m.; 12:15, 1:15, 2:15, 3:15,
4:15, 5:15, 6:15, 7:15, 8:15, 9:45,
11:15 p. m.

Eastward—Leave Elizabethtown, 5:
45, 6:45, 7:45, 8:45, 9:45, 10:45, 11:45
& m.; 12:45, 1:45, 2:45, 3:45, 4:45,
5:45, 6:45, 7:45, 8:45, 9:30, 11:15 p.
m., 12:30 a. m.

Additional car daily except Sunday
leaves Mt. Joy at 6:15 a. m., arriving
at Lancaster at 7:15 a. m.

Saturdays, cars every half hour
leaving Lancaster from 8:15 a. m. to
7:15 p. m.; leaving Mt. Joy from 7:15
a. m. to 8:15 p. m.

On Saturdays a car will leave Lan-
caster at 9:15 and 10:15 p. m.; leave
Elizabethtown at 10:45 and 11:45 p.
m.

Sundays, cars every half hour from
May 1 to Nov. 1, leaving Lancaster
from 7:15 a. m. to 7:15 p. m.; leave
Mt. Joy from 8:45 a. m. to 8:15 p. m.

Sundays, cars every half hour from
Nov. 1 to May 1, leaving Lancaster
from 2:15 p. m. to 7:15 p. m.; leav-
ing Mt. Joy from 3:15 p. m. to 8:15
p. m.

Sundays, first car leaves Lancaster
at 6:15 a. m.; leaves Elizabethtown
7:30 a. m.

(*) Daily except Saturday.

We are Always Prepared to serve

**Pure
Spring
Water
ICE**

IN ANY QUANTITY at Very
Moderate Charges.

Don't fail to see us before plac-
ing your order this year.

J. N. Stauffer & Bro.
Mount Joy, Penna.

For a Good Clean Shave
Or a Classy Hair Cut

Stop at

H. J. WILLIAMS
TONSorial PARLOR

**A Very Special
"Pick-up" Of
Balmacaans**

ON SATURDAY you should make an effort to
see the special purchase of Men's high-grade
Balmacaans which our buyer picked up while in New
York City last week.

When we first advertised these on Wednesday there
were almost a hundred in the lot—since that time a
number have been sold, but there is still a handsome
selection left which will pay you well in an actual
money-saving if you come quickly.

These Balmacaans, in the newest Scotch mixtures
and latest styles, were made up to sell at \$12, \$15, \$18
and \$22, but when we took off the entire surplus lot left
on the manufacturer's hands we got them at a price
that enables us to sell them at \$10, \$12, \$15 and \$18
instead of the above figures.

We don't want you to take our word alone for this
—WE WANT YOU TO SEE THEM FOR YOURSELF.
If you don't altogether trust your own judgment of
values, bring your wife, mother or sister along — and
we'll be glad to stand by their verdict.

WATCH FOR THE GREATER GROFF & WOLF STORE.

Groff & Wolf Co.

26-28 North Queen Street
LANCASTER, PENNA
LANCASTER'S FASTEST GROWING STORE

**This International Harvester
Engine Fills Your Needs**

Of all the satisfactory machines that are built for the use of
farmers and contractors, the I. H. C. tank-cooled engine is certainly
one of the best. Steady as a clock, ready and willing to do its
work whenever there is work to do, it is getting a reputation for
dependability which might be envied by any man.

This engine has the long cylinder and piston, the large bear-
ings and heavy crank shaft, the heavy fly wheels and split hubs,
the well designed base, and all the accessories that make up the
engine it is possible to build. Its performance is in every way
equal to its looks. This is the engine to buy, because of its very
low cost per year of service.

The I. H. C. dealer has a demonstrating engine on his floor
which you should see. Until you see it and see it at work, you
cannot know as much as you should about all engines.

International Harvester Co. of America
INCORPORATED
HARRISBURG, PENNA

**The Only Feed
Grinder That Grinds Wet Grain
Without Clogging**

You needn't have trouble when you come to
grind wet feed. We have a line of Feed Grinders
that will handle it at the same speed as dry.

**LETZ SELF-SHARPENING
SILENT BUHR FEED MILLS**

Give Letz Mills a trial and you will never use any other
kind. They are the fastest-working,
easiest-running Feed Grinders made, and
cost you least for gasoline. Grind Oat
Hulls, Alfalfa, Hay, Corn with Cobs and
Husk, Wheat Screenings and all Small
Grains fine at a single grinding. Buhrs
sharpen themselves. One set grinds 1000
to 3000 bushels. We can furnish you the
right size Letz for your engine's horse-
power. See us about it at once.

H. S. Newcomer
Eastern Distributor
MOUNT JOY, - PENNSYLVANIA

Masonic Home News
By Peter Radford, Lecturer National
Farmers' Union

The bonfires were again kindled
at the Masonic Homes for the vigil
of Halloween, this year being its
second celebration.

Grand Lodge Hall is splendidly
adapted for the holding of social
functions, and on this occasion was
appropriately decorated with gar-
lands of beautifully tinted autumn
leaves, carved pumpkin lanterns, and
other devices appropriate to the
occasion.

Logs burned in fireplaces, to typi-
fy the bonfires kindled in every
household in ancient times, as sac-
red fires, at certain seasons, while
the red globes on all electric
lights shed a subdued light over
all, and added much to the inspira-
tion of the joyous occasion.

The celebration was made espe-
cially notable and interesting, by
reason of the presence of the Right
Worshipful Grand Master, Bro. J.
H. Williams of Philadelphia, whose
exalted position and great promi-
nence in Freemasonry, eminence as
lawyer and citizen, as well as his
devoted labors in the successful de-
velopment and management of the
Masonic Homes, shed luster and ad-
ded dignity to the occasion. The
fact that Mrs. Williams, wife of the
Grand Master, accompanied him, gave
added pleasure to all, especially
to the guests of the Homes.

Additional honor was conferred
upon the occasion by the presence
of Bros. P. M. Andrew H. Hershey
and P. M. Henry C. Schock, mem-
bers of the Committee on Masonic
Homes, who were accompanied by
their families.

In addition to the pleasure it gave
us to have these noted friends with
us, was the satisfaction of approval
their presence gave to the efforts of
celebration.

Many prominent citizens of Eliza-
bethtown, Mt. Joy and Lancaster,
together with the dancing Club of
Elizabethtown, all of whom were
masked, graced the occasion with
their presence, and with the guests
of the Homes, made a gathering
which taxed the accommodations of
Grand Lodge Hall.

The masqueraders were many in
numbers, represented all nations, all
colors and all stations of life, and
with their characters, gorgeous, gro-
tesque and ridiculous costumes, pre-
sented at once a scene of splendor,
interest and mirth which delighted
the beholder.

The celebration was opened with
a program presented on a stage. Ar-
ranged in classic semi-circular form
was a "Kitchenette Band," composed
of guests and employees of the
Homes, who, with blackened faces
and dressed as negro minstrels,
played on kitchen utensils, accom-
panying the music of a victrola.
They were led by an eminent con-
ductor, Prof. Souze, a black faced
artist wearing many medals and
whose baton beat many kinds of
time. The harmony of the band
was somewhat metallic and the fun
created proved a feature of the en-
tertainment.

Recitations, songs and addresses
were numerous.

The ending of the program was
followed by the ball and ended with
a collation which was participated
in by all present.

Mt. Moriah Lodge, No. 155 of Phil-
adelphia, accompanied by their fam-
ilies and friends to the number of
102, visited the Homes on Tuesday,
Nov. 5. They arrived at 10 A. M.,
were taken over the Estate in au-
tomobiles, and shown all points of
interest. They partook of a full
course chicken dinner and inspected
Grand Lodge Hall. They thoroughly
enjoyed their visit, all hands being
enthusiastic in the appreciation of
their treatment and all they beheld,
and returned to their Homes, filled
with a desire to advance the future
interests of the Masonic Homes.

Mt. Moriah Lodge No. 155, has a
guest in these Homes, whom they
left in a happy frame of mind in
memory of their visit. To W. M.
Bro. Galusha P. Jones, S. W. Bro.
John L. Young, J. W. Bro. George
T. Smith and Bro. Charles Pfaffum,
Otto Kraus and John W. Frazier be-
long special credit for the pleasur-
able success of this excursion.

The regular religious services on
Sunday, were conducted by Rev.
Bro. Frank G. Bossert, pastor of the
Presbyterian Church of Mt. Joy, as-
sisted by the choir of his church.

In addition to preaching an able
and impressive sermon, the Rev.
Bro. Bossert sang a solo, "Open the
Gates," in a very enjoyable manner,
while the choir rendered with fine
effect, the anthem "Oh, Love That
Will not let Me Go."

The assembly room in which the
services were held was decorated
with a number of fine chrysanthem-
ums, which had been brought to
the Homes by Messrs. Albert M.
Herr and F. L. Kohr of Lancaster,
as the gift of the Lancaster County
Floral Club which held its exhibi-
tion in Lancaster last week. The
blooms are exceedingly fine speci-
mens of varied colors.

The guests of the Homes appreci-
ate very highly the congenial kind-

FARM FACTS

Help to organize rural life and
make the country a better place in
which to live.

The problem that confronts the
farmer next in importance to dis-
tribution is diversification.

Agriculture has gone through two
thousand years of evolution and is
still in an experimental stage.

Over production is the stumbling
block, and systematic marketing the
stepping stone of agriculture.

It is the duty of every farmer to
see that his wife is supplied with
every equipment to lighten her la-
bors.

To eliminate waste and inefficiency
in marketing, the farmer should keep
in close touch with market condi-
tions.

The problem of marketing is the
biggest business proposition of any
age or nation and one that will re-
quire the combined efforts of all the
agencies of civilization to solve.

Co-operating Farming

In this age of co-operation, in
which manufacturing and commercial
interests have attained wonderful
development and success by merging
their resources, it is not to be won-
dered at that co-operation has slow-
ly but inevitably vended its way in-
to rural life. The old method of
individualism is gradually giving
way to the co-operative spirit and
the result is a greatly reduced cost
of living and lessened expense of
farming.

Pennsylvania farmers are leading
the co-operative movement and it
is gradually being extended into ev-
ery feature of community life.

Rural Telephones

The telephone is one of the
most profitable business agencies
that the farmer can employ. It af-
fords him facilities for keeping in
constant communication with the
markets, provides a sitting room
for the community where the fami-
lies can assemble and discuss the
events of the day without the in-
convenience of travel or loss of
time, and in sickness and emergen-
cies, it renders a divine service.

Pennsylvania farmers should en-
courage the building of telephone
lines. Local co-operative companies
can be formed and country lines
built at small expense.

The American horse is one of the
first to answer the bugle call of
the European war. Representatives
of many foreign governments are
in this country purchasing horses
for the various armies of the war-
ring nations and practically every
state in the Union is contributing
cavalry material to the belligerent
factions.

The American horse is a utility
animal and excels that of any other
country on the face of the earth. He
has plowed our fields, fought our
battles and is the most faithful of
animal kind. His reputation has
extended to other countries and he
is now going to perform the serv-
ices for foreign countries which he
has so faithfully fulfilled at home.

Meat Shortage

Addressing an audience composed
of stockraisers from practically ev-
ery state in the Union, at the Na-
tional Dairy Show convention in
Chicago recently, Secretary Hous-
ton of the U. S. Department of Agr-
culture declared the short meat
supply to be one of the most serious
problems confronting American
agriculture. Mr. Houston approved
the plan of cattle raising on large
ranches and declared that no effort
would be spared by the Federal
Government in further increasing
production from this source but in-
sisted that the proper solution of
this problem depended on an in-
creased interest in livestock raising
by farmers and in a more system-
atic control and eradication of hog
cholera, cattle tick and tuberculosis.

Figures were quoted from Govern-
ment reports, showing that the pro-
duction of meat in the U. S. during
the past 14 years had fallen off
8,000,000,000 pounds and that the
population of the nation during this
time had increased 22,000,000.

Report on Penna. Crops

The Crop Reporting Board of
the U. S. Department of Agricul-
ture has just completed its esti-
mate of the acre yield of the prin-
cipal farm crops of Penna. for this
year. The estimates are based on
crop conditions during the early
part of October. The final figures
will be given out within a short
time, but it is reported that they
will not differ to any great extent
with the preliminary estimates. Ac-
cording to the figures the yield per
acre of the principal crops of this
State in 1914 will be as follows:
Corn, 49.4 bushels; buckwheat, 25.2
bushels; Irish potatoes, 122 bushels;
sweet potatoes, 137 bushels and to-
bacco, 1,600 pounds.

Child Seriously Scalded

Maud, the two-year-old daughter of
Morris Metzler, of Columbia, was
badly scalded by her mother, Thurs-
day and is now in the Colu-
mbia hospital. The little girl
was playing with a high chair

WATT and S
Corner Square and E.
Lancaster, Penna

**A Height-Of-The S
Clearaway Of
Fashionable Silk**

Our Own Regular Stocks of
Hard Weaves, Crepe Meteors
De Chines, Satin Meteors, C
D'eau Crepes, Etc. Colors On

Regular \$1.50, \$1.75, \$2 and
Qualities Institute Week 9
\$1.25, \$1.50 and \$1.75 a

Lancaster Women Looking f
Real Silk Bargain Will Find
Values In This Clearaway. Ask
See The Following Items--

\$1.75 All-Silk Crepe Meteors in a 40"
Inch Width and a Lot of Desirable
Shades..... **1.25**

\$1.50 and \$1.75 Crepe De Chines \$1.25
One of this season's most fashionable silks; 40 inches
and a good variety of new shades.

\$2.25 Crepe Meteors \$1.75
An extraordinarily fine grade, in a 44-inch width; good co-
lor of colors.

\$2.00 Satin Meteors \$1.50 a yd.
Satin is very fashionable for combination dresses and tri-
mings. Plenty of wanted shades, in a 40-inch width.

\$1.50 Cascade D'Eau Crepes at 98c a yd.
Black and a host of the best shades; 40 inches wide, and
marvelous value for the price.

Winter Millinery

Just received an exceptionally fine and stylish line of PLUSH
AND VELVET HATS for ladies and children. Also all the NEW-
EST STYLES IN FEATHERS AND VELVET FLOWERS at Low-
est Prices.

FLORA DRABENSTADT
East Main Street Mount Joy, Pa.

Curtains and Draperies

How gratifying are the feelings of a hostess when she knows
her curtains and draperies are pleasing when they show individual
treatment, harmony and taste.

Many helpful suggestions for decorating your home at small
cost are offered in our Interior Decorating Department. We urge
you to visit it and see our attractive displays of window hang-
ings. Among them are the

MOSS ROSE "AURORA" DRAPERIES
an unusually durable, mercerized fabric with the softness and
sheen of silk. The great variety of color and artistic designs—
mission, arts and crafts, period and floral—is a feature of these
Draperies.

Carpet Cleaning—Carpets called for, cleaned and returned at
short notice.

Westenberger, Maley & Myers
125-131 East King St. LANCASTER, PA.

AUTOMOBILE SUPPLIES

Automobile Casings which averaged 6,700 miles.

When in TROUBLE A SPECIAL VULCANIZING PLANT
your service.

General Office