

S. H. Miller

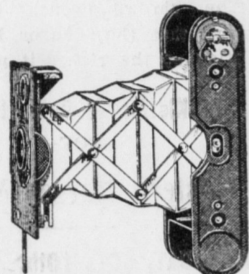
WATCHES
Clocks, Jewellery
and Spectacles

Repairing in all its Branches.
Also electrical goods of all
kinds.
Electric light globes sold & Ex-
changed for Edison Electric
Company.

Report all Electric light trou-
ble to me which will have
prompt attention.

East Main street
MOUNT JOY, PENNA.

THERE'S ALWAYS ROOM FOR A



Vest Pocket Kodak

The little camera that's built as accurately as a watch. One pull and it is opened, in focus—a slight pressure on the ball bearing shutter release, and the exposure is made—a push and it is closed and back in your vest pocket.

Has Kodak Anastigmat lens, giving remarkable definition, and Autotime Scale to insure correct exposure. Size of pictures, 1 1/2 x 2 1/2 inches. Capacity, eight exposures without reloading. Price, \$12.00, with single lens, \$6.00.

Sold by

W. B. BENDER BARBER

East Main St., Mount Joy, Pa.

WE HAVE EVERYTHING FOR THE AMATEUR PHOTOGRAPHER

CONESTOGA TRACTION CO.

LANCASTER, ROHRERSTOWN, MT. JOY AND ELIZABETHTOWN

DIVISION

Schedule in effect January 1, 1914.
Westward—Leave Lancaster, 4:00, 5:15, 6:15, 7:15, 8:15, 9:15, 10:15, 11:15 a. m.; 12:15, 1:15, 2:15, 3:15, 4:15, 5:15, 6:15, 7:15, 8:15, 9:45, 11:15 p. m.

Eastward—Leave Elizabethtown, 6:45, 7:45, 8:45, 9:45, 10:45, 11:45 a. m.; 12:45, 1:45, 2:45, 3:45, 4:45, 5:45, 6:45, 7:45, 8:45, 9:30, 11:15 p. m., 12:30 a. m.

Additional car daily except Sunday leaves Mt. Joy at 6:15 a. m., arriving at Lancaster at 7:15 a. m.

Saturdays cars every half hour leaving Lancaster from 6:15 a. m. to 7:15 p. m.; leaving Mt. Joy from 7:15 a. m. to 8:15 p. m.

On Saturdays a car will leave Lancaster at 9:15 and 10:15 p. m.; leave Elizabethtown at 10:45 and 11:45 p. m.

Sundays, cars every half hour from May 1 to Nov. 1, leaving Lancaster from 7:15 a. m. to 7:15 p. m.; leave Mt. Joy from 8:45 a. m. to 8:15 p. m.

Sundays, cars every half hour from Nov. 1 to May 1, leaving Lancaster from 2:15 p. m. to 7:15 p. m.; leaving Mt. Joy from 3:15 p. m. to 8:15 p. m.

Sundays, first car leaves Lancaster at 6:15 a. m.; leaves Elizabethtown 7:30 a. m.

(*Daily except Saturday.

Advertisement for Pure Spring Water ICE, J. N. Stauffer & Bro., Mount Joy, Penna.

Advertisement for H. J. Williams Tonsorial Parlors, Mount Joy.

Advertisement for D. Swift & Co. Patent Lawyers, Washington, D. C.



Take Notice!

The Undersigned Wish to Inform the Public that They are Prepared to do Practical Horse Shoeing At Jno. Bombach's Stand, Mt. Joy. Special attention given to all work. All diseases of the feet promptly attended. Your Work Solicited.

BOMBACH & SHANK

General Blacksmiths and Horse-Shoers MOUNT JOY, PENNA.

Wall Paper Time



Is at hand and so am I with the finest line of samples ever shown. I do all kinds of paper hanging at very reasonable prices. It will pay you to see my samples and get my prices before placing your order for papering this Spring.

Emanuel Myers

NEWTOWN, PA.

Prof. Fred W. Gestewitz

Author of several Songs and Marches. The German Musician, offers his services to the people in Lancaster Co., teaching on almost any String instruments, Piano, Organ and Pipe Organ at reasonable prices—tuning pianos and repairing organs and pipe organs a specialty.

Mount Joy, Pa.

HOTEL McGINNIS

The undersigned having remodeled the old Mooney Hotel, adding a number of sleeping rooms, bath, etc., is now prepared to entertain transient and regular guests.

RESTAURANT

TURTLE SOUP, Etc., Etc. Private Dining Room for Ladies

In connection with hotel where he will serve in season OYSTERS & CLAMS in any style.

J. W. McGinnis, PROPRIETOR

CHAS. H. ZELLER

REAL ESTATE AND INSURANCE

E. Main St. Mount Joy

W. M. HOLLOWBUSH

NOTARY PUBLIC Attorney-at-Law

48 West Main Street, Mount Joy, Pa. Days at Lancaster, Monday and Friday at No. 52 North Duke Street.

CHARLES S. FRANK

AUCTIONEER MOUNT JOY, PA.

Prompt Attention given to Sales of Real Estate and Personal Property. Terms Moderate Bell Telephone

SHAVING HAIR CUTTING

Joseph B. Hershey Tonsorial Parlor

Three Chairs, No Waiting Agent for the Middletown Steam Laundry. Goods called for Tuesday and delivered Friday.

East Main St. MOUNT JOY

Masonic Home News

Monuments may crumble from age and neglect; mausoleums may be effaced by the gnawing tooth of time, but buildings erected for the wear of centuries and dedicated to a cause ever advancing with civilization, preserve for the future, lasting memorials. Some such thought must have inspired the late Brother John Henry Daman of Washington Lodge, No. 59 of Philadelphia to devise the residue of his estate for the erection of a memorial building on the grounds of the Grand Lodge Homes. Built of everlasting granite, and cemented for the wear of ages; built in a noble cause, and under the care of a great Fraternity which has existed from time immemorial and grows with the rapidity of the progress of time, he could have chosen no more lasting memorial, nor set a better example to his surviving brethren.

On Tuesday, September 22, 1914, R. W. Grand Master, J. Henry Williams, Esq., assisted by his Grand Officers, in ceremonial form and with the beautiful ritual of the R. W. Grand Lodge of Pennsylvania, laid the corner stone of the John Henry Daman Memorial Building. The reading world has learned this fact through the Press, but it remains for the Committee on Masonic Homes and all within the walls of the Homes to realize its full significance.

With most commendable forethought and at considerable trouble, Superintendent, N. Franklin Heckler, and his assistants made careful and extensive preparations for the event, not overlooking the slightest detail in accommodation, decoration and provision to insure the convenience of the Grand Master and his Officers, and the comfort and pleasure of all who participated.

The decorations, in addition to the National Colors were made up exclusively from the gardens and farms of the Homes grounds, Grand Lodge Hall, within its walls, reminded one of a County Fair or a Harvest Home celebration. All the columns of the main corridor and portals of entrance to the parlors were decorated with gigantic corn stalks with their large ears of corn in sight, while at the base of each, an enormous pumpkin claimed wonder and admiration. Tables laden with choicest fruit and baskets overflowing with premium winning vegetables lined the walls of the corridors and spoke paeans of praise for the products of our farms.

The ceremonial was enhanced by the excellent music furnished by Lu La Band, the celebrated band of Lu La Temple nobles of the Mystic Shrine of Philadelphia, and by a large male chorus, composed of Philadelphia Lodge. At the conclusion of the ceremonies, the chorus rendered a short program in Grand Lodge Hall while the band gave an excellent concert on the lawn. The music was of high order and was greatly enjoyed by the multitude.

Immediately after the ceremonies of laying of the corner stone, the participants, headed by the Grand Master and the other Officers of the Grand Lodge, proceeded to the Grand dining hall and participated in a bounteous feast, prepared and served by our Assistant Superintendent, Mr. John A. Shell and our Chef, Mrs. L. E. Shaw, whose successful achievements gained the commendation of the Grand Master and all the host of participants.

The laying of this corner stone is of importance, as it is of the first of a group of buildings which, when erected will constitute the Masonic Home Village; and when it is recalled that there are now 110,000 Masons in Pennsylvania, and yearly increasing, if only one per cent of these and their families find their way to this shelter, a village will rise here rivaling Elizabethtown in population.

With pleasure we record the growth of the roll of honor and its extension into new territory. Dauphin County has now entered the list, and it is to the credit of Perseverance Lodge, No. 21 of Harrisburg, to be the County pioneer.

On Sunday, September 27, 1914, Brother W. M. Musser accompanied by Rev. J. D. Lyter, pastor of Derry Street United Brethren Church and Chaplain of Perseverance Lodge, No. 21, a quartette of singers, Brothers R. E. Steever, Jerome Hamilton, Nevin Seltzer and H. H. Fraim; and the members of the Lodge, their families and friends to the number of 300, came to the Homes and conducted the religious services.

The able and intensely interesting sermon of Rev. J. D. Lyter elicited the close attention of every one of a capacious audience and gained their sincere admiration and conviction. The beautiful singing of the quartette added much to the beauty and inspiration of the service which we gladly place among the very best Sunday services the Home has yet enjoyed.

Perseverance Lodge, No. 21 has placed itself firmly upon the roll of honor, a shining example for the other Lodges of Dauphin County which will no doubt be followed and they still further manifested their good will by extending an invitation to the male guests of the Homes to be their guests at a meeting of their Lodge to be held on October 26, 1914, for which they meet all ex-

WAS MISERABLE COULDN'T STAND

Testifies She Was Restored to Health by Lydia E. Pinkham's Vegetable Compound.

Lackawanna, N. Y.—“After my first child was born I felt very miserable and could not stand on my feet. My sister-in-law wished me to try Lydia E. Pinkham's Vegetable Compound and my nerves became firm, appetite good, step elastic, and I lost that weak, tired feeling. That was six years ago and I have had three fine healthy children since. For female troubles I always take Lydia E. Pinkham's Vegetable Compound and it works like a charm. I do all my own work.”—Mrs. A. F. KREAMER, 1574 Electric Avenue, Lackawanna, N. Y.



The success of Lydia E. Pinkham's Vegetable Compound, made from roots and herbs, is unparalleled. It may be used with perfect confidence by women who suffer from displacements, inflammation, ulceration, tumors, irregularities, periodic pains, backache, bearing-down feeling, flatulency, indigestion, dizziness, or nervous prostration. Lydia E. Pinkham's Vegetable Compound is the standard remedy for female ills. Women who suffer from those distressing ills peculiar to their sex should be convinced of the ability of Lydia E. Pinkham's Vegetable Compound to restore their health by the many genuine and truthful testimonials we are constantly publishing in the newspapers.

If you want special advice write to Lydia E. Pinkham Medicine Co. (confidential) Lynn, Mass. Your letter will be opened, read and answered by a woman and held in strict confidence.

Several months ago a widow with four small children was admitted to the Homes and a few days ago her little brood was increased to five. This, in addition to its pathetic character, marks the first child to be born in the Homes and was alluded to by Hon. Abraham H. Beiler in his oration at the Corner Stone Laying, in which he said we had 176 guests in the Homes the other day, which has now been increased by the arrival of a baby; so that it remained for a woman to break the rules of the Committee on the admission of new guests.

Brother J. Henry Hayes, a guest of the Homes and a former banker of Philadelphia, received the felicitations of his friends and fellow guests on Monday, September 28, 1914, on his 77th birthday anniversary.

In addition to many remembrances from friends, District Deputy Grand Master, Brother Charles F. Bower, a P. M. of Franklin Lodge, No. 134, which is also Brother Hayes Lodge, sent a special messenger from Philadelphia, with presents of cigars for the men and candy for the women, so that every guest in the Homes might unite with Brother Hayes in celebration of his natal day. In the evening, vocal and instrumental music was given by the guests of the Homes, in Brother Hayes honor.

The Homes gratefully acknowledge the gift of 200 Bibles and 200 Hymn books from Brother Past Master, John Wanamaker of Philadelphia.

We had the pleasure of extending a fraternal greeting to Brother James Snedden, a P. M. of Wyandotte Lodge, No. 3, of Kansas and the Superintendent of the Kansas Masonic Home, who expressed great pleasure at his visit to the greatest of Masonic Homes.

MAYTOWN WANTS TROLLEY LINE

Citizens Must and Will Try To Build One

The progressive village of Maytown, about two miles north of Marietta, will have a trolley line connecting it with Lancaster, if plans formulated at a citizen's meeting Thursday evening, are carried out. Friday a committee of leading citizens met the Conestoga Traction Company officials in an effort to have the local company build an operate the line. If Maytown is not successful in this, the committee will propose to build the line and then lease it to the C. T. company for operation.

Fifty of the most prominent citizens of the village turned out at the meeting and offered to assist in every way. A trolley line will be very beneficial for Maytown, giving easy access to Marietta, thence to Columbia and from there to Lancaster.

An organization was formed with Rev. J. D. Krout, at the head. The committee, which will meet the traction company officials consists of Rev. Mr. Krout, chairman, Dr. G. A. Harter, C. E. Hicks, M. R. Hoffman, Charles Zell and J. Keener.

There is more Catarrh in this section of the country than all other diseases put together, and until the last few years was supposed to be incurable. For a great many years doctors pronounced it a local disease and prescribed local remedies, and by constantly failing to cure with local treatment, pronounced it incurable. Science has proven Catarrh to be a constitutional disease, and therefore requires constitutional treatment. Hall's Catarrh Cure, manufactured by F. J. Cheney & Co., Toledo, Ohio, is the only Constitutional cure on the market. It is taken internally in doses of 10 drops to a tea-spoonful. It acts directly on the blood and mucous surfaces of the system. They offer one hundred dollars for any case it fails to cure. Send for circulars and testimonials. Address: F. J. CHENEY & CO., Toledo, O. Sold by Druggists, 75c. Take Hall's Family Pills for constipation.

HOW WOOD HOLDS NAILS

Some interesting Experiments and Deductions Concerning an Everyday, Commonplace Subject

What is it that holds a nail so firmly when it is driven into wood? asks the "Literary Digest." Does the shape of the nail or the sharpness of its point affect the holding force? These and other questions have been answered by experiments tried recently by a committee of the American Railway Engineering Association.

The tests had to do with railway-ties and track-spikes, but they evidently hold for ordinary nails in any kind of wood. The conclusions drawn by the committee are that nails deteriorate wood sooner than screws, that blunt points hasten decay, and that it is desirable to bore a hole previous to driving the nail. In tests of holding power the ordinary chisel-pointed spike made the poorest showing and the sharp-pointed ones the best. The resistance of screw-spikes was found to be two or three times that of the ordinary kinds. Says a writer in "Engineering News":

"The relative weight of the cut spikes as compared with the screw spike is 1 to 2, and their relative maximum holding power averages 1 to 2 1/2, respectively, thus indicating an advantage of 25 per cent. for the screw spike over that of the cut spike, equal weights of metal being considered. In the majority of cases the cut spikes driven in the 7-16 in. holes require the greatest force to remove them. The long-leaf pine exhibits about the same holding power with no hole and with 7-16 in. hole while the red oak, balsam and New Mexico pine display a somewhat higher power with no hole bored for the spike.

With the screw spikes there are but seven comparisons to make, since it was impossible to screw the spikes in 3-8 holes in the Ohio and Japanese oak. In these seven cases, however, the red oak and the red gum, which are the hardwoods, reveal a much greater holding power with the spikes screwed into the larger hole; while in the long-leaf pine, Douglas fir, balsam, and New Mexico pine, which are soft woods, the holding power of the spikes is somewhat higher with the smaller hole, altho the difference is not so marked as in the case of the hardwoods.

The fibres of the red gum, balsam, long-leaf pine, and red oak were not broken at all by the nail in the compression test, which indicates a very elastic fibre wood.

HAVE PNEUMATIC TUBE SYSTEM

Groff & Wolf Co. Installs the Great Time-Saving System for Saving Customer's Time

With the installation this week of a complete and improved pneumatic tube cash system all through their store, the big men's furnishings and clothing house of Groff & Wolf Co. have taken a forward step in modern merchandising. They now have the distinction of being one of the two stores in Lancaster operating under the pneumatic tube system. Old-time merchandising gave little consideration to the saving of the customer's time in "making change." To-day even the seconds of a minute are precious. From the moment the cylinder containing the cash is placed in the tube, forming an electric contact, the "start and stop" system, until it is returned takes an average of from twenty-two to twenty-five seconds from the station farthest from the office. The cylinder is sucked up by vacuum and blown back by air pressure, each way taking about eight seconds from the farthest station in the store.

The system is constructed on the basis of two units, on which there are nine stations located throughout the furnishings, hat and leather goods departments on the first floor and basement. It is not only practically noiseless as compared with the cable system formerly in use, but, save for the brass tubes located at inconspicuous places, is practically out of the customer's sight. Before the latter is hardly aware that his purchase-money is on its way to the office the "change" is returned to his hand, so quick is the dispatch of the system. The installation was made by the Independent Pneumatic Tube Company, of New York.

Cow Fell in Well

A cow belonging to Sol Rosenthal, a well known cattle dealer of Columbia, was instantly killed on Saturday morning when she fell into a well on the property of J. E. Baker Co.'s new quarries near Chiques. The cow was being driven near the place of the accident, when several dogs jumped at her legs, causing her to break into a dead run. The animal headed straight for the well, which was not covered and fell a distance of 85 feet, its depth. The well has not been in use for some time. The cow drowned.

Curious Cabbage Head

Ex-Burgess John Kugle, of Marietta raised in his garden, a curiosity in the shape of a head of cabbage, with sixteen smaller heads. It is of the Late Flat Dutch variety, and every head is perfectly formed and solid.

WA Corn

And you like thought... eclipse and County Fair when you do come to the Fair that Lancaster come to the most stup Merchandise it has ev home, we are open fro every evening and we new ones.

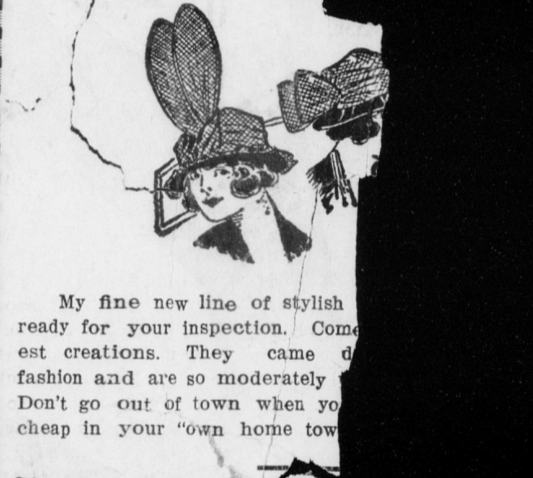
New Wool F

Splendid varieties matchable for babies' we... White Wool Flannels, weights and grades; 25c. Colored Wool Flannels and gray; an elegant valu... All-Wool Colored Flan wide; in navy, scarlet and... All-Wool Skirting Flan plaid; 27 inches wide an... All-Wool Colored Flan gray; used extensively fo weave; 50c. a yard. Fine Waisting Flannels striped effects in either w a yard.

Beautiful Embr

To the best of our kno shown in Lancaster. Eithe 50c. to \$1.00 a yard.

New Fall



FLORA DRABE

East Main Street, Mou

Fall Furniture D

Unequaled in S Beauty and Low I

Unlike the ordinary store, it is our sole Furniture, Carpets, Rugs and Draperies of artistic designs. Before furnishing this fall, amine this truly wonderful assortment. In size, variety or beauty. OUR INEXPENSIVE LOCATION and our ing enables us to offer exceptionally low price Here you will find complete Dining Room ing Room Suites, in Jacobean, Sheraton, Adan old reproductions in Mahogany, Walnut, Oak o Complete Dining Room Suites, \$49.00 up. Oak Dining Room Suites, \$110.00 complete. Daily demonstrations of the celebrated St anos. Come in and hear them, you'll be made

Westenberger, Male

125-131 East King St.

The Automobile Club

6,700 Miles P

Pennsylvania Oilproof

Penna. Tires are guaranteed for 4 for 3500 are mere ordinary. You ca

70 Test CASOL

Barr's Repair S

NEW HAVEN ON

We print all the ne